

B1 OFFICE UNIT TO LET

(SUBJECT TO CONTRACT)

Commercial Unit B, Ground and First Floors 26-28 Ramsgate Street, London, E2 2NA



£147,000 per annum

Size: 497sq m / 5340 sq ft (Approx)

Description: A ground and upper level office unit situated close to the heart of Dalston. The unit has good transport links by train at Dalston Kingsland and Dalston Central and bus services on Dalston Lane and Kingsland Road. Kingsland Shopping Centre is walking distance to the unit with access to a variety of retail outlets.

Lease: A new lease is available on terms to be agreed.

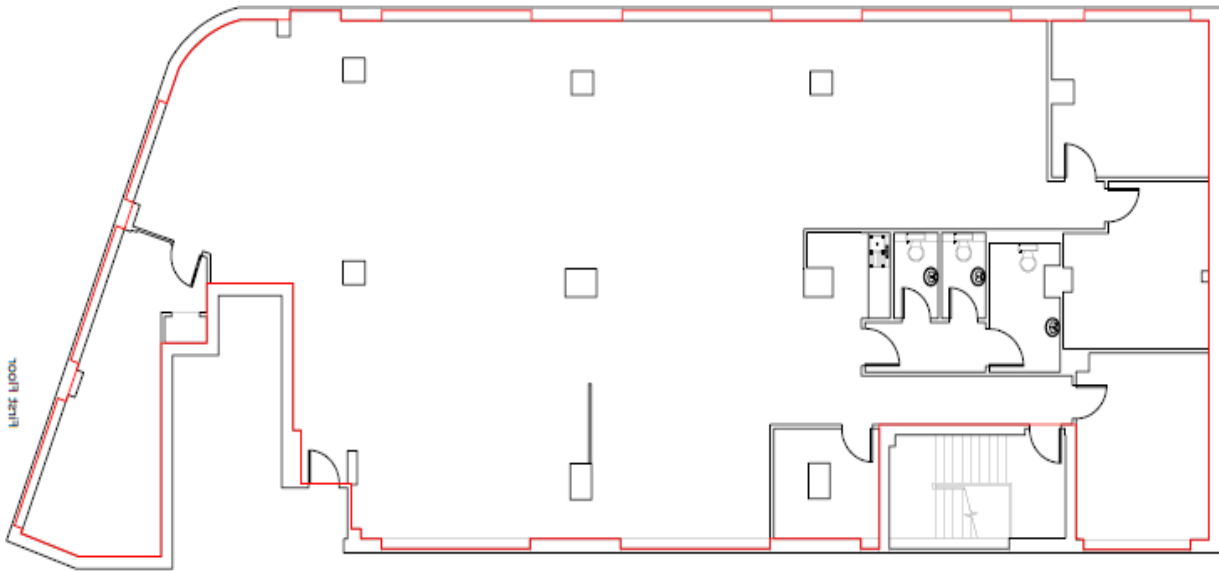
Legal Costs: Each party to bear their own legal costs.

Citystyle commercial is part of One Housing Group Ltd.

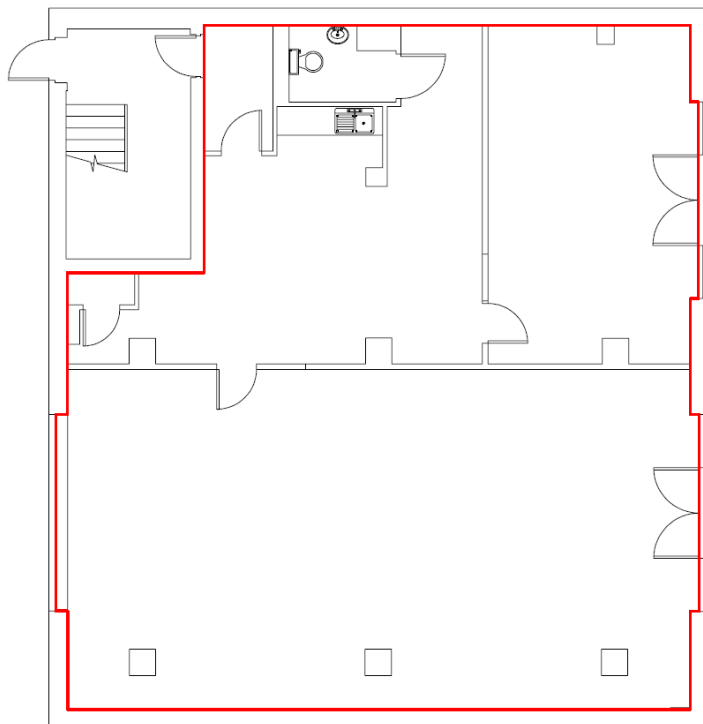
1. These particulars do not form any part of any offer or contract. 2. They are intended to give a fair description of the property but no responsibility is accepted for any errors they may contain. 3. Any interested party must inspect the property or otherwise to satisfy their correctness. 4. All floor areas are approximate.

LEASE PLAN

Ground Floor



First floor



EPC

Energy Performance Asset Rating

More energy efficient

A+

Net zero CO₂ emissions

A 0-25

B 26-50

C 51-75

◀ 68

This is how energy efficient the building is.

D 76-100

E 101-125

F 126-150

G Over 150

Less energy efficient

About us

Citystyle Commercial is the in-house team managing the One Housing Group commercial portfolio.

Our portfolio includes mixed-use units of various sizes and value such as doctor's surgeries, offices nurseries, art studios and retail units.

We have a reputable track record in areas such as tenant retention, efficient rent collection, minimisation of risk and innovative asset management strategies and solutions.

Viewings

For viewings or enquiries on Unit B Ground and first floor 26-28 Ramsgate Street, London, E2 2NA or any other queries please contact:

Isma Naheem

Commercial Property Assistant

E: inaheem@onehousing.co.uk

T: 020 8821 5319

M: 07920 088 379

Suttons Wharf South, 44 Palmers Road, London, E2 0TA

onehousing.co.uk

Citystyle commercial is part of One Housing Group Ltd.

1. These particulars do not form any part of any offer or contract. 2. They are intended to give a fair description of the property but no responsibility is accepted for any errors they may contain. 3. Any interested party must inspect the property or otherwise to satisfy their correctness. 4. All floor areas are approximate.