

NORTHWICH



BARONS QUAY

NORTHWICH . EAT . DRINK . SHOP

NOW OPEN - WALK THIS WAY

M&S

ASDA

ODEON

WILDWOOD
PIZZA PASTA GRILL

COSTA

ABOUT NORTHWICH

An attractive market town which sits right at the heart of the wealthy Cheshire catchment area.

The town is situated at the confluence of the River Weaver and is famed for its rich history with the salt industry.

Northwich is one of the only two North West towns to be featured in the **Sunday Times list of '101 Best Places to live in Britain'**.

The town centre serves the local Northwich community and also a large rural catchment with excellent schools and low crime rates.

Northwich is also well related to neighbouring towns including Winsford, Altrincham, Knutsford, Frodsham, Nantwich, Crewe and Macclesfield.



KEY FACTS

88,525
Core catchment
population

POPULATION
295,000
within a 25 minute drive



**HOUSEHOLD
SPEND
HIGHER**
than the national
average in most
retail categories



**AFFLUENT
CATCHMENT**
Affluent achievers
+14% ABOVE UK average
Comfortable communities
in line with UK average



**NEW
HOMES**
4,250
under construction
and with planning
permission/allocated

CLOTHING & FOOTWEAR SPEND
+3% ABOVE UK average
+6% ABOVE average



£70.8M
potential comparison
goods market for Northwich




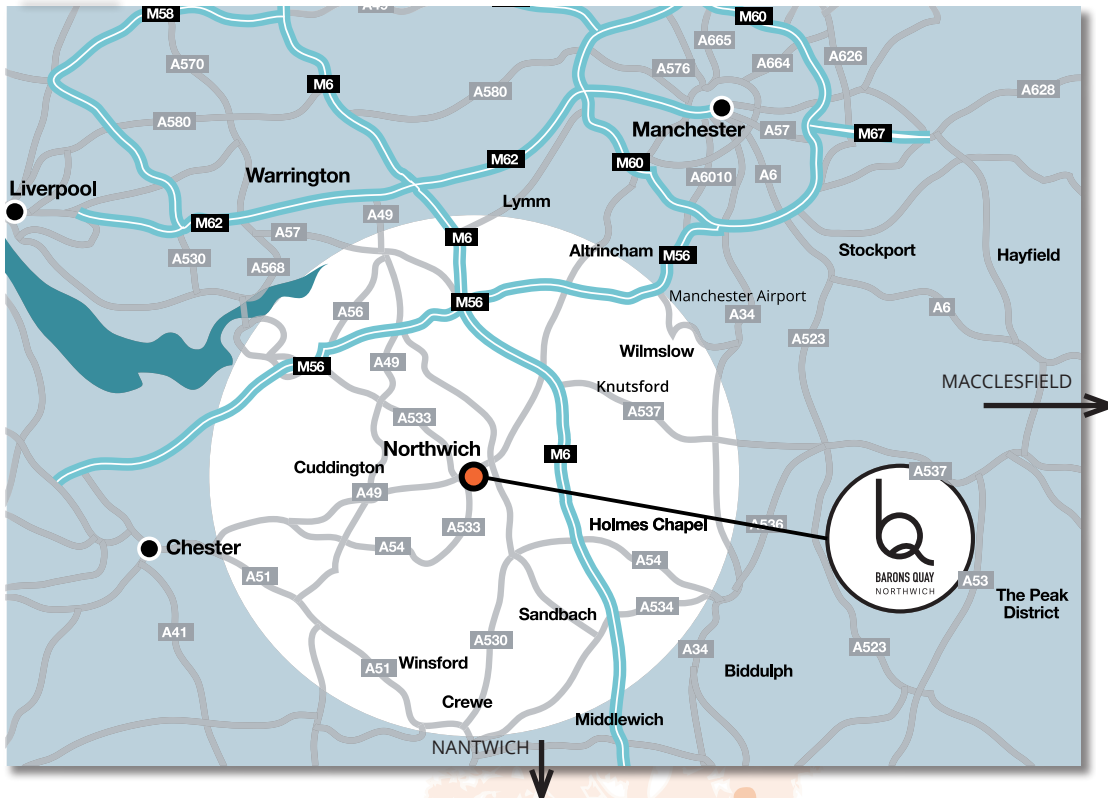
3.6%
low unemployment

**NORTHWICH
REGENERATION**
£141m invested to date
+£50m over the next 5 years

LOCATION, LOCATION, LOCATION

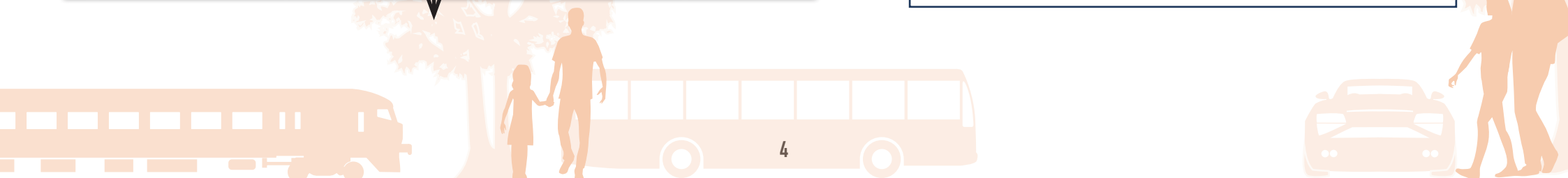
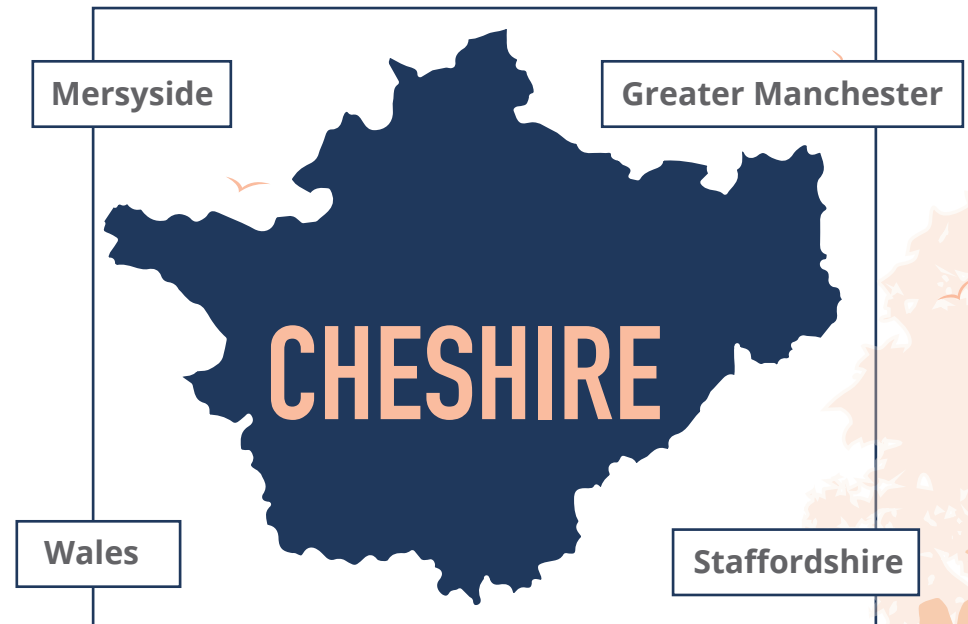
Located in the **North West of England...**

 Shoppers catchment area



Northwich is approximately;

- 23 miles to the South West of Manchester
- 18 miles East of Chester
- Easily accessible by road, bus and train



NORTHWICH

ASDA
M&S

BARONS QUAY

ODEON
FANATICAL ABOUT FILM

P

MATALAN

Sainsbury's

NORTHWICH LIBRARY

NORTHWICH LEISURE CENTRE

WEAVER SQUARE REGENERATION

HIGH STREET

RIVER WEAVER

Waitrose



SCHEME OFFER RETAIL

M&S
20,000 sq ft

ASDA
68,000 sq ft
20 RETAIL
Units

172,000 sq ft
Total Retail

929 FREE
Parking Spaces



BARONS QUAY
NORTHWICH . EAT . DRINK . SHOP

ASDA

MARKS & SPENCER

BARONS QUAY
NORTHWICH . EAT . DRINK . SHOP

SCHEME OFFER LEISURE



ODEON

5 Screen iSense cinema

COSTA

WILDWOOD

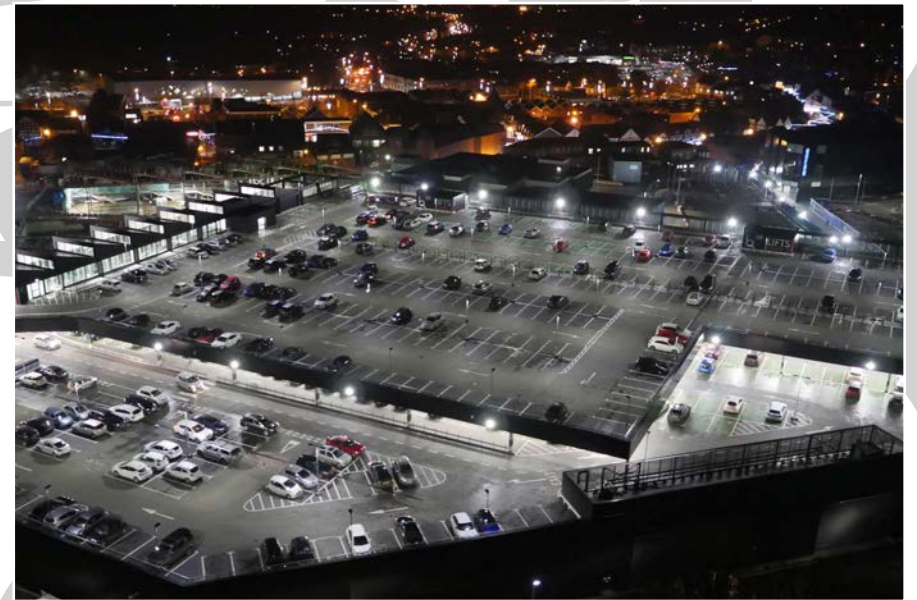
PIZZA PASTA GRILL

**RESTAURANTS
& LEISURE**

28,000 sq ft

**RIVERSIDE
LOCATION**







LEASING PLAN

NB: Not to scale. All areas are gross internal, based upon architect's plans. These particulars are believed to be correct but their accuracy is not guaranteed and they do not form part of any contract.



UNITS SCHEDULE

MARKS & SPENCER		
ASDA		
5-SCREEN ODEON		
UNIT	SQ M	SQ FT
1	288	3,100
2	364	3,918
3	317	3,412
3A	121	1,302
	First: 280	3,014
4	287	3,089
5	533	5,737
	Mezz: 18	193
	Terr: 356	3,831
WILDWOOD		
6		
7	221	2,379
8	305	3,283
9	355	3,821
10	304	3,272
11	139	1,500
12-13	740	6,165
14-16	788	8,487
17	809	8,712
MAJOR FASHION BRAND EXCHANGED		
18		
19	237	2,560
20	318	3,426
21	259	2,792
22	202	2,182
23	524	5,649
24	204	2,196
24A	101	1,087
25	161	1,743
26	163	1,755
27	247	2,665
28	758	8,164
	Mezz: 748	8,051

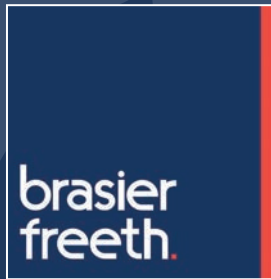
FEBRUARY 2018

CONTACTS



McMullen Wilson

David Hopps
david@mcmullenwilson.com
T. 0203 058 0552



Brasier Freeth

Damian Sumner
damian.sumner@brasierfreeth.com
T. 0797 408 5738



GCW

Nick Warr
nick.warr@gcw.co.uk
T. 0780 305 1205

Archie Morriss
archie.morriss@gcw.co.uk
T. 0783 763 0523

A development by:



Cheshire West
and Chester



BARONS QUAY
NORTHWICH . EAT . DRINK . SHOP

www.baronsquay.co.uk

Misrepresentation Act: Cheshire West and Cheshire Council give notice that:

1. The information in this brochure is given in good faith but it is of a general nature only and given without responsibility on our part or that part of our agent. Intending purchasers or tenants must satisfy themselves independently as to the accuracy of any matter on which they intend to rely.
2. All negotiations are subject to contract and none of this information forms part of a contract or constitutes an offer of contract.
3. No representation or warranty is given by or on behalf of Cheshire West and Cheshire Council, other than any representations contained within any formal contract agreed.