

FOR LEASE

FULLY IMPROVED EDUCATIONAL/OFFICE BUILDING

FORMER HEALD COLLEGE CAMPUS

1605 E MARCH LANE, STOCKTON, CALIFORNIA

LEASE RATE: CONTACT BROKER



CONTACT US

BRIAN PETERSON

Senior Vice President
Lic. 01718738
+1 209 476 2907
brian.peterson@cbre.com

STEVE WHITE

Vice President
Lic. 01781200
+1 209 476 2906
steve.white@cbre.com

3247 W. March Lane,
Suite 100
Stockton, CA 95219
T +1 209 473 7800

www.cbre.us/cacentralvalley

CBRE

FOR LEASE 1605 E MARCH LANE

STOCKTON, CALIFORNIA



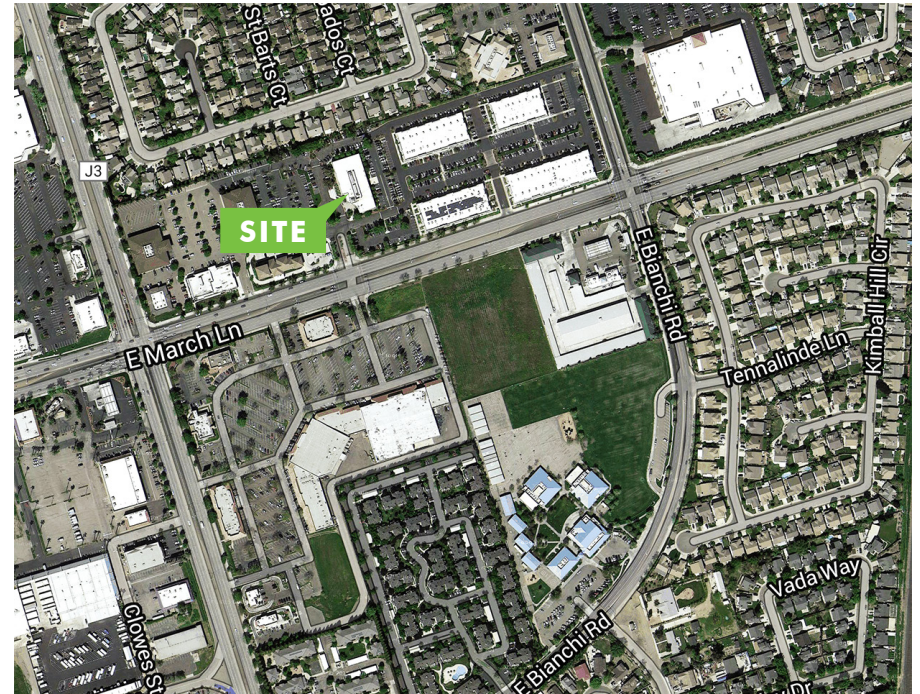
PROPERTY FEATURES

BUILDING SPECIFICATIONS

Total Building Size: ±34,283 RSF
 Total Availability: ±34,283 RSF
 Land Area: ±4.02 AC
 Parking Ratio: 9:1,000
 Zoning: Commercial Office (CO)

BUILDING SPECIFICATIONS

- + 2-story modern office/education complex
- + Ingress/egress at controlled intersection
- + Entry plaza areas
- + Security systems
- + Prominent building signage
- + Abundant 9/1,000 SF parking ratio with ability to accommodate even the most parking-intensive uses
- + Energy management system
- + Fixtures, furniture and office equipment can be included
- + Professionally managed

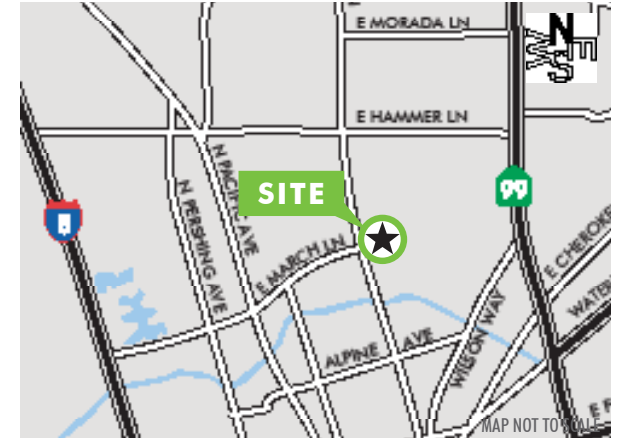
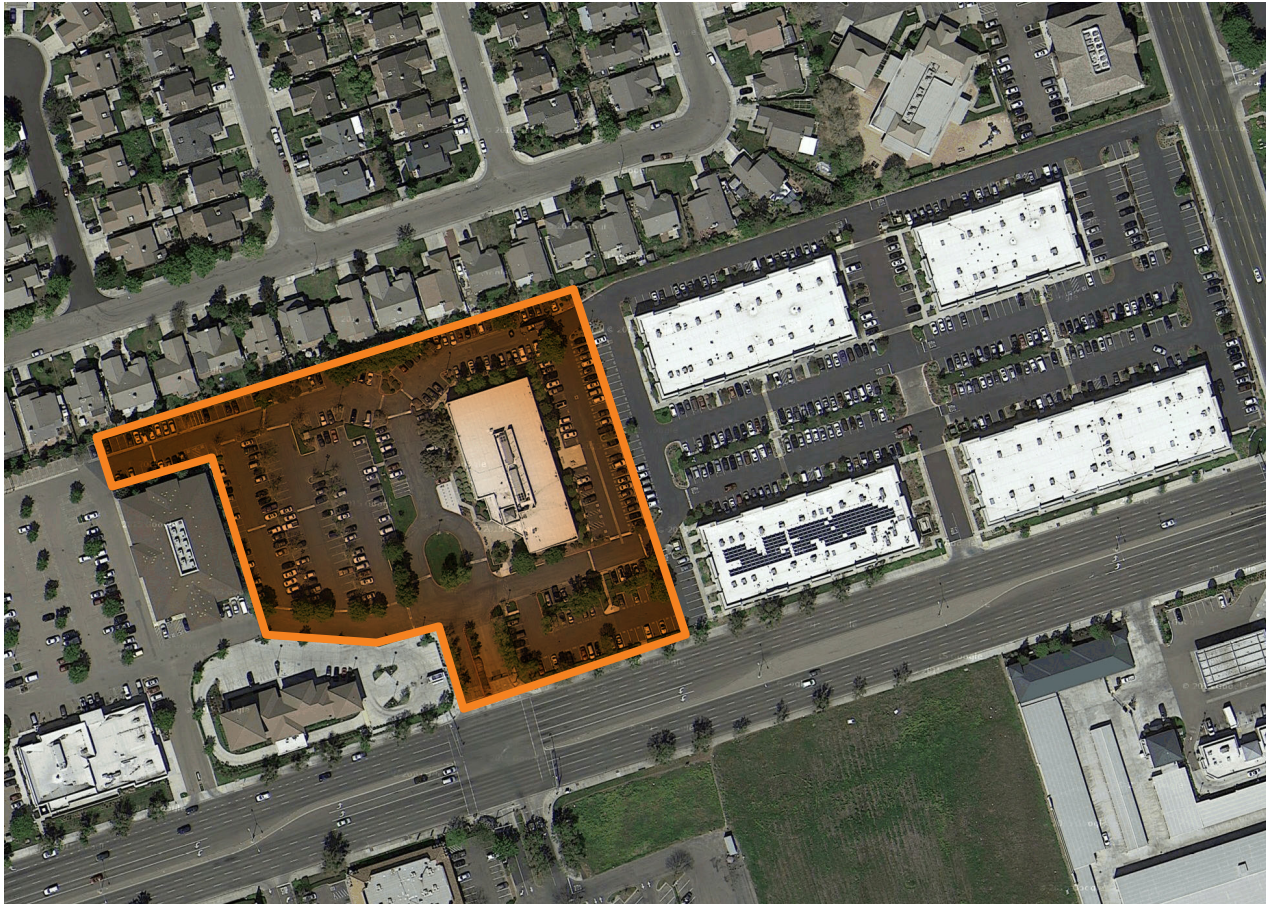


DEMOGRAPHICS (2018 est.)	1-mile radius	3-mile radius	5-mile radius
Estimated Population	28,397	157,706	306,364
Average Household Income	\$60,660	\$64,178	\$71,366

TRAFFIC COUNTS	1-mile radius
E March Ln & Weber Ranch Pkwy (2007)	25,900 ADT
West Ln & E March Ln (2009)	26,757 ADT

FOR LEASE
1605 E MARCH LANE

STOCKTON, CALIFORNIA



© 2019 CBRE, Inc. All rights reserved. This information has been obtained from sources believed reliable, but has not been verified for accuracy or completeness. You should conduct a careful, independent investigation of the property and verify all information. Any reliance on this information is solely at your own risk. CBRE and the CBRE logo are service marks of CBRE, Inc. All other marks displayed on this document are the property of their respective owners. Photos herein are the property of their respective owners. Use of these images without the express written consent of the owner is prohibited. 70706178-218857

www.cbre.us/cacentralvalley

CBRE

FOR LEASE

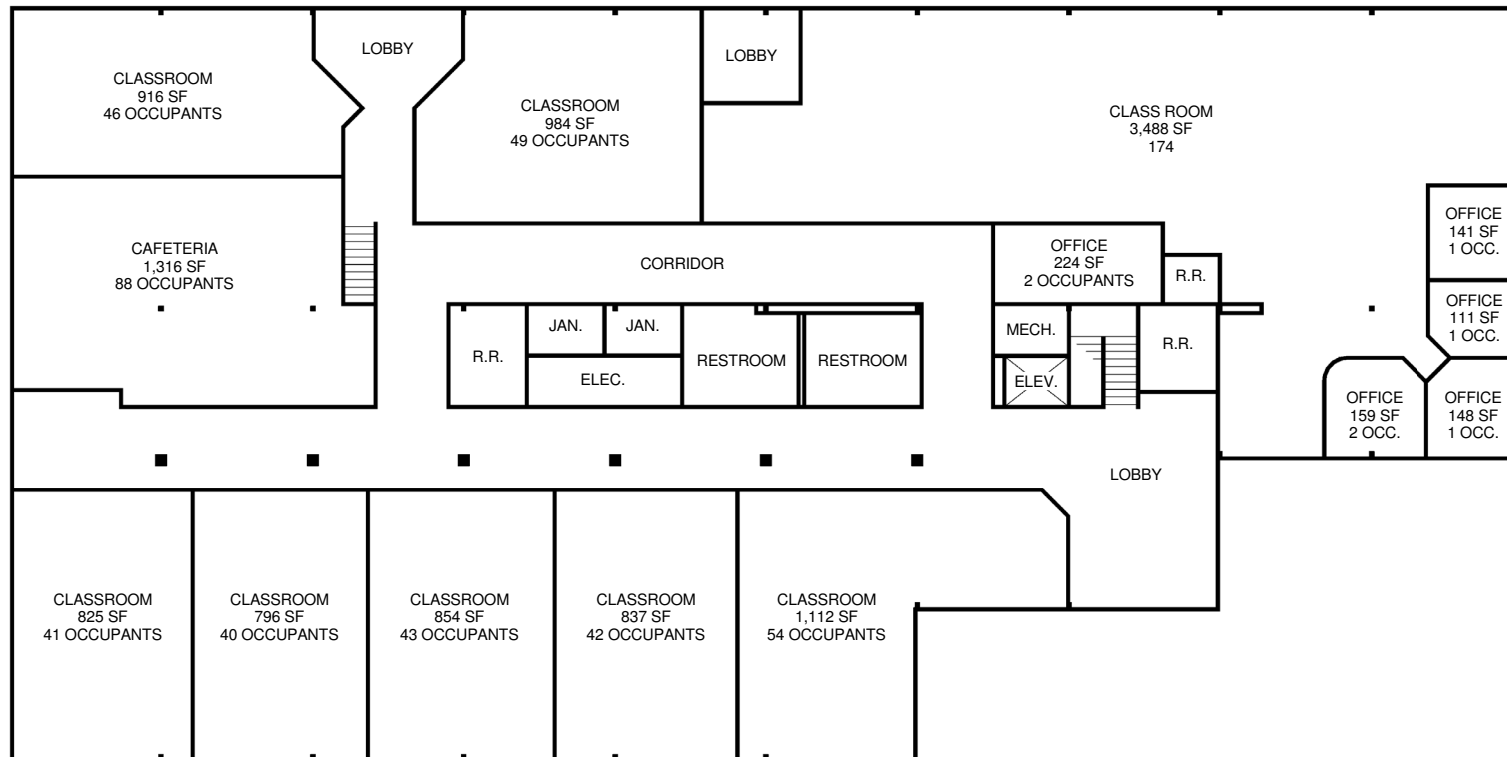
1605 E MARCH LANE

STOCKTON, CALIFORNIA



FLOOR PLAN

FIRST FLOOR - ±17,141 SF



MEASUREMENTS ARE APPROXIMATE.

www.cbre.us/cacentralvalley

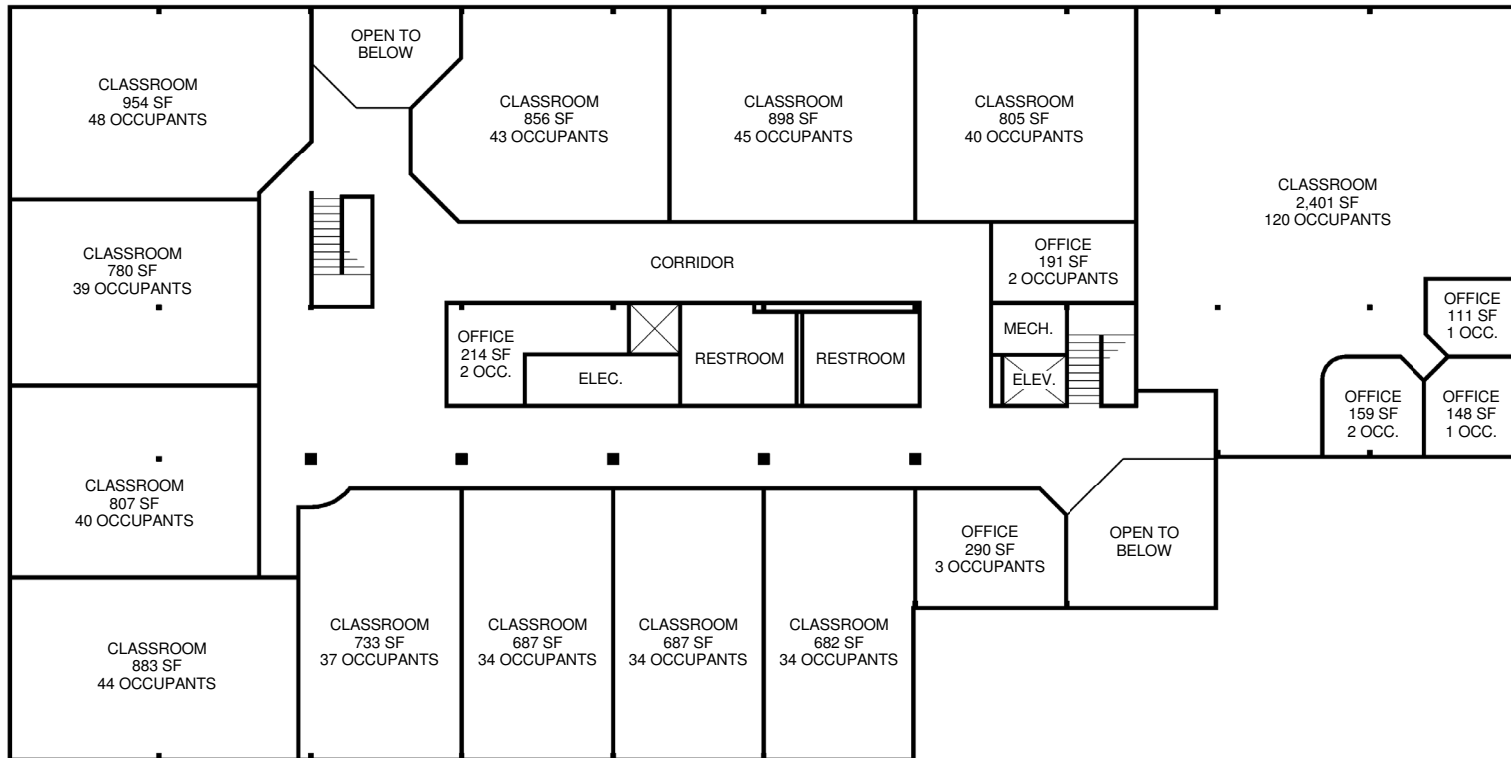
CBRE

FOR LEASE
1605 E MARCH LANE

STOCKTON, CALIFORNIA



FLOOR PLAN
SECOND FLOOR - ±17,141 SF



MEASUREMENTS ARE APPROXIMATE.

FOR LEASE 1605 E MARCH LANE

STOCKTON, CALIFORNIA



www.cbre.us/cacentalvalley

CBRE