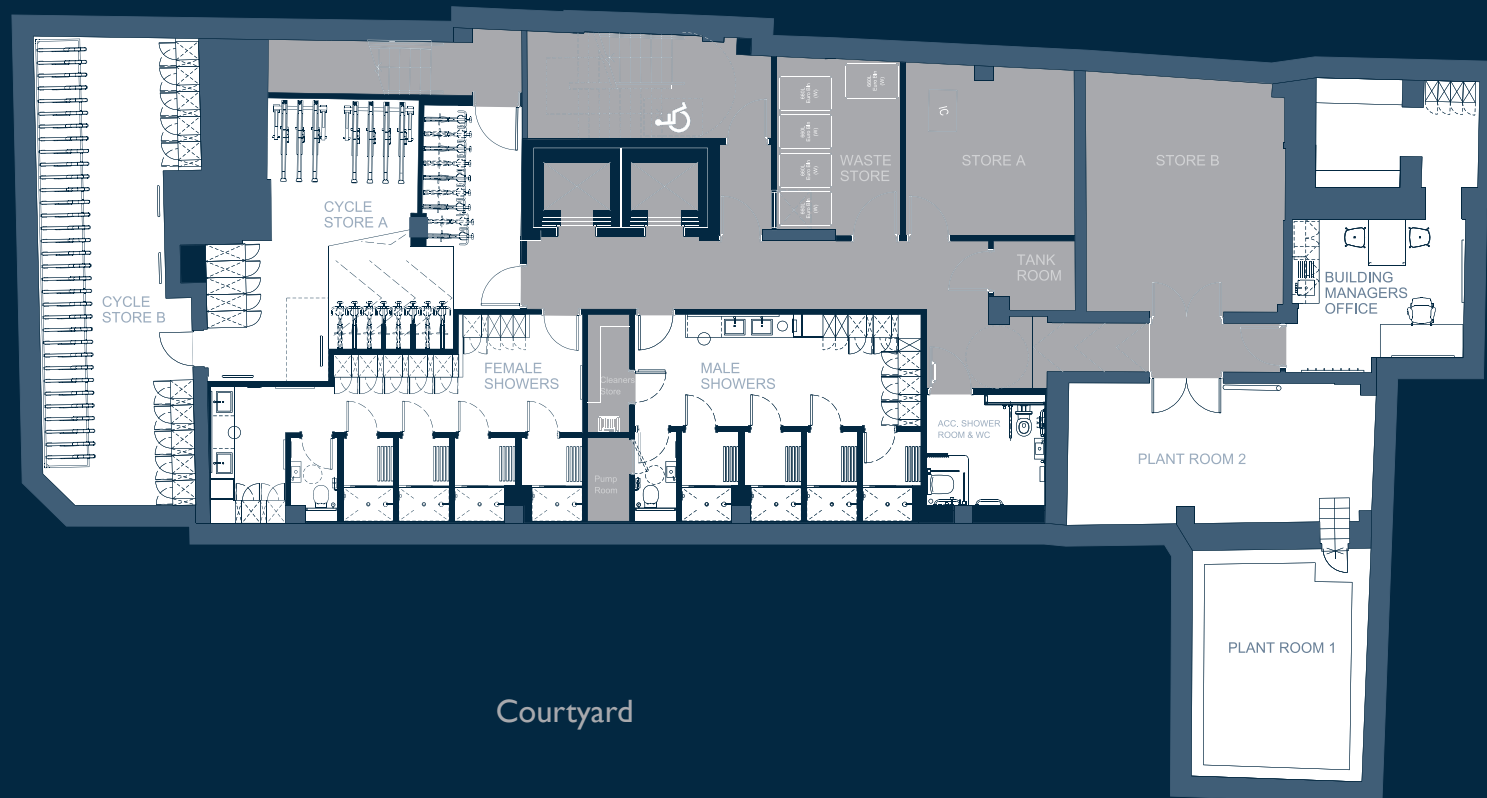


BASEMENT



15-18
AUSTIN FRIARS
LONDON EC2

Austin Friars



Courtyard

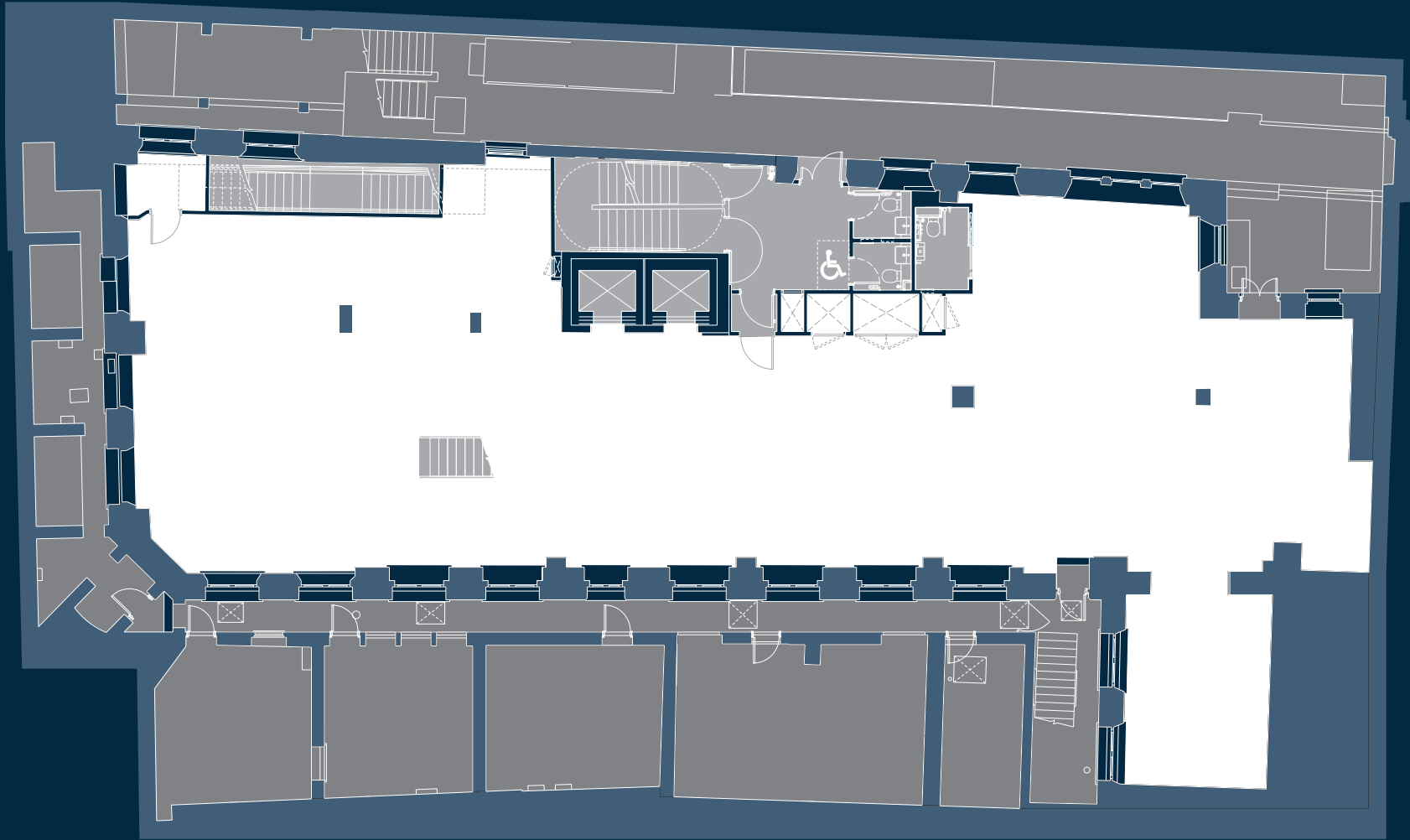


LOWER GROUND FLOOR

3,492 sqft / 324 sqm



15-18
AUSTIN FRIARS
LONDON EC2

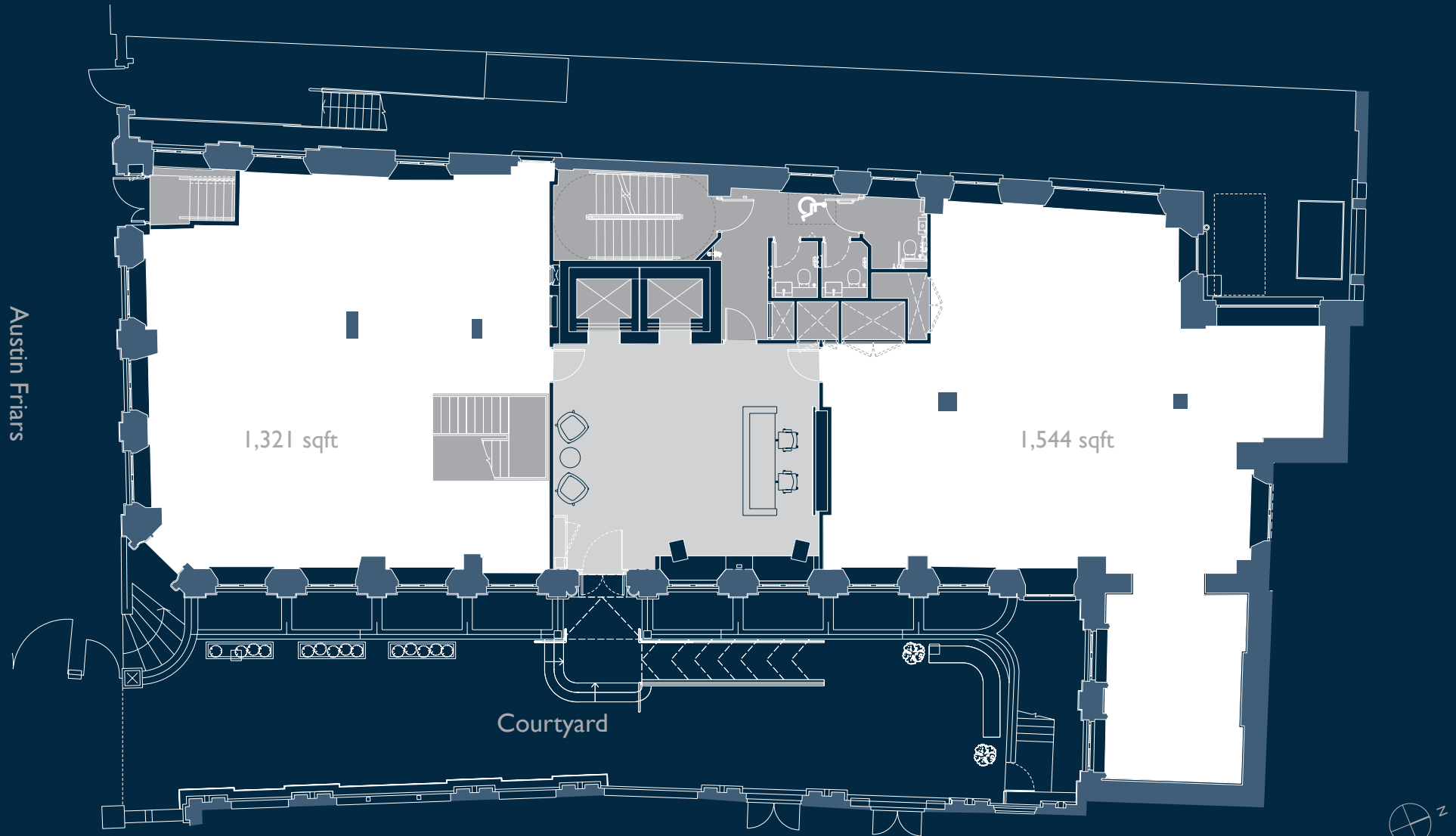


GROUND FLOOR

1,321 sqft / 123 sqm (Front) 1,544 sqft / 143 sqm (Rear)



15-18
AUSTIN FRIARS
LONDON EC2



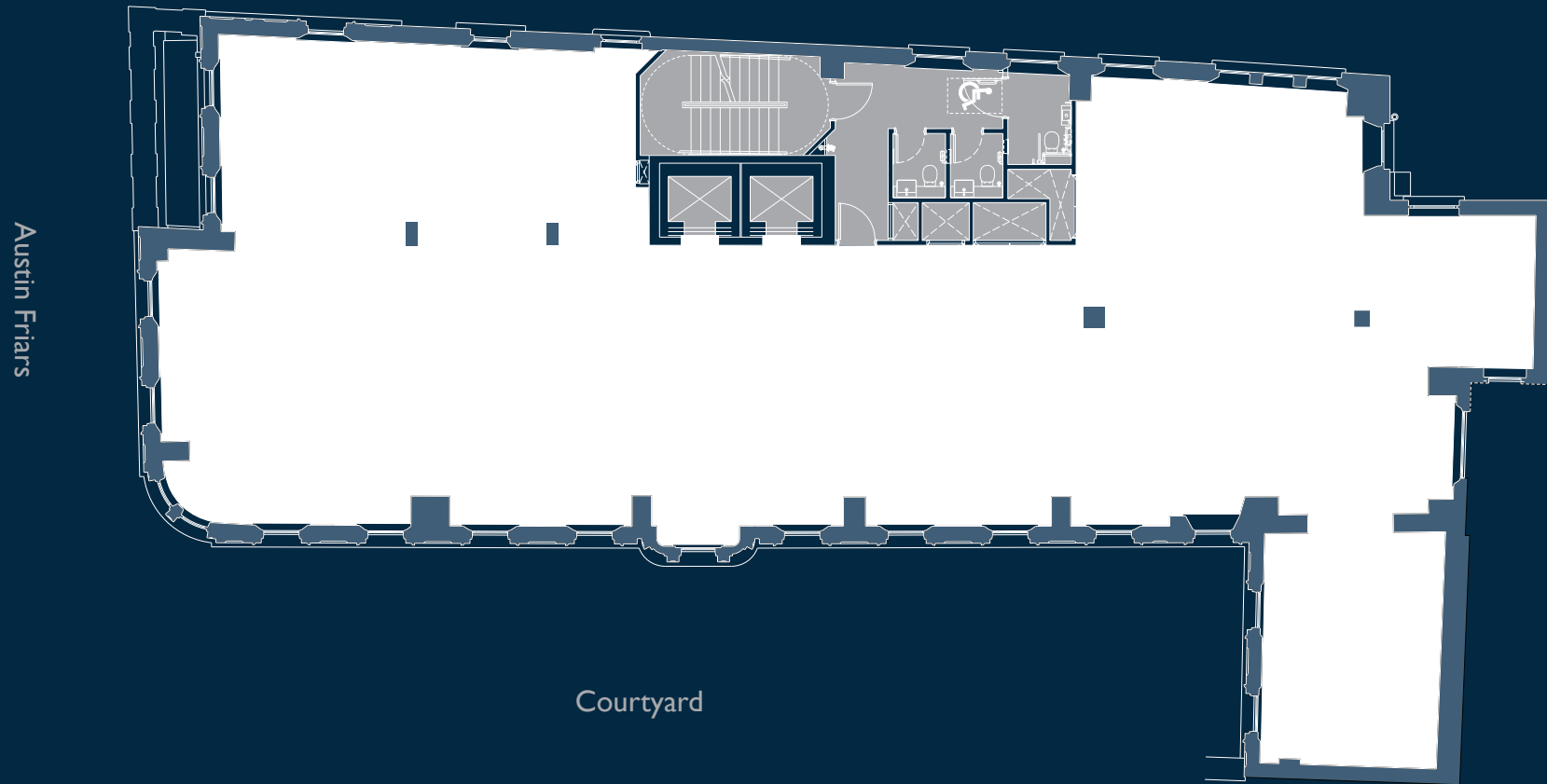
TYPICAL FLOOR

3,894 sqft / 362 sqm - 3,852 sqft / 358 sqm



15-18
AUSTIN FRIARS
LONDON EC2

FIRST FLOOR - THIRD FLOORS



FOURTH FLOOR
3,228 sqft / 300 sqm



15-18
AUSTIN FRIARS
LONDON EC2



FIFTH FLOOR
1,946 sqft / 181 sqm



15-18
AUSTIN FRIARS
LONDON EC2

UNDER OFFER

