

## Prime Retail Location With Walk-Up Window/Drive-Thru In Downtown Keego Harbor

- Prime 2,700 SF retail with walk-up window/ drive-thru option available
- Highly visible, stand-alone store front building with great signage visibility on Cass Lake Road
- Ideal location for: professional office (architectural firm, contractor/construction company, interior design firm), Domino's Pizza, 7-11, restaurants, hair salon, UPS Store, medical/dental office, physical therapy, nail salon, health & wellness spa, bank/credit union, & QSR/take-out food service.
- Building has 2 bathrooms, 2 HVAC units, 2 water heaters, & 2 electric panels
- Single tenant location or can be divided



### Details:

- Located in prime, Highly-desirable Oakland County, Michigan
- Within minutes from Cass Lake, Sylvan Lake, Orchard Lake & Elizabeth Lake
- Vacant lot available next door-built to suit
- Convenient storefront parking
- Fiber internet connection available
- Customizable space with natural light
- Nicely finished space with open layout
- Traffic Count: 17,222 Vehicles/day

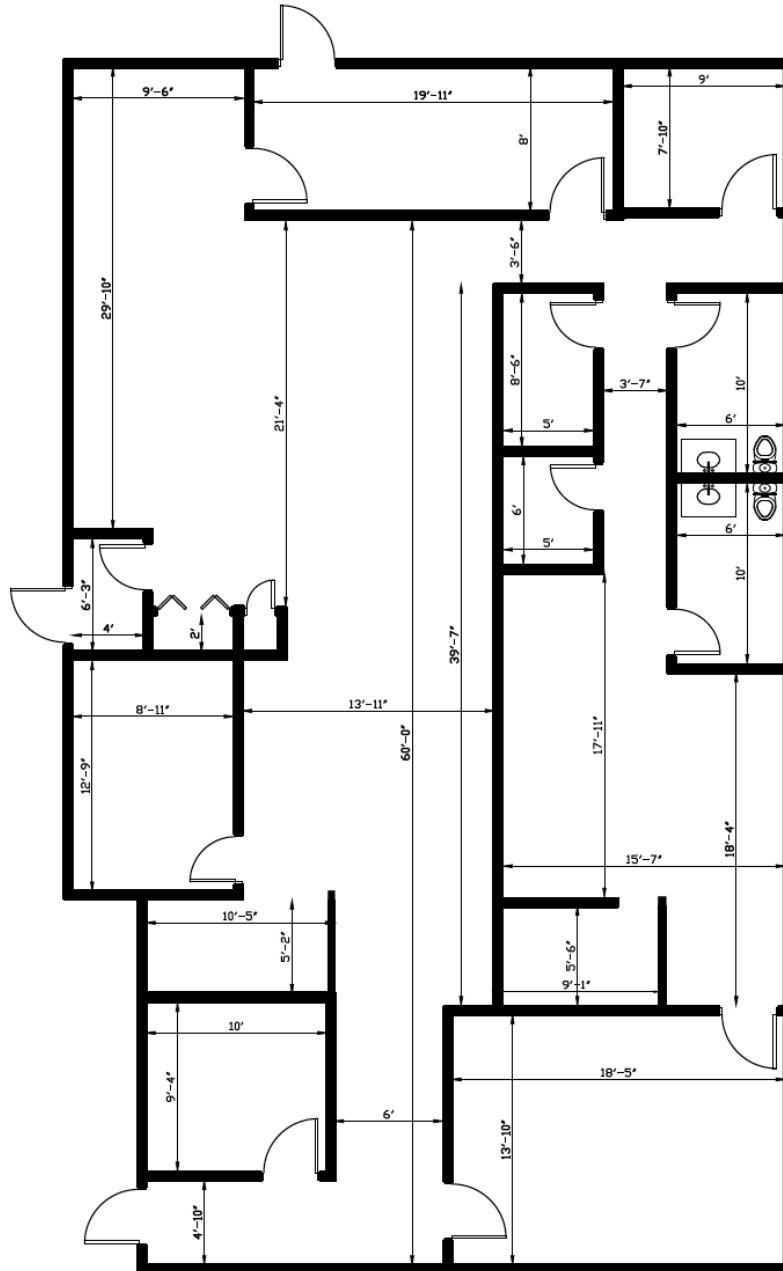


### Demographics:

- Population: 170,178 | Households: 66,796 | Employees: 68,109
- Average household income: \$103,544/ annually

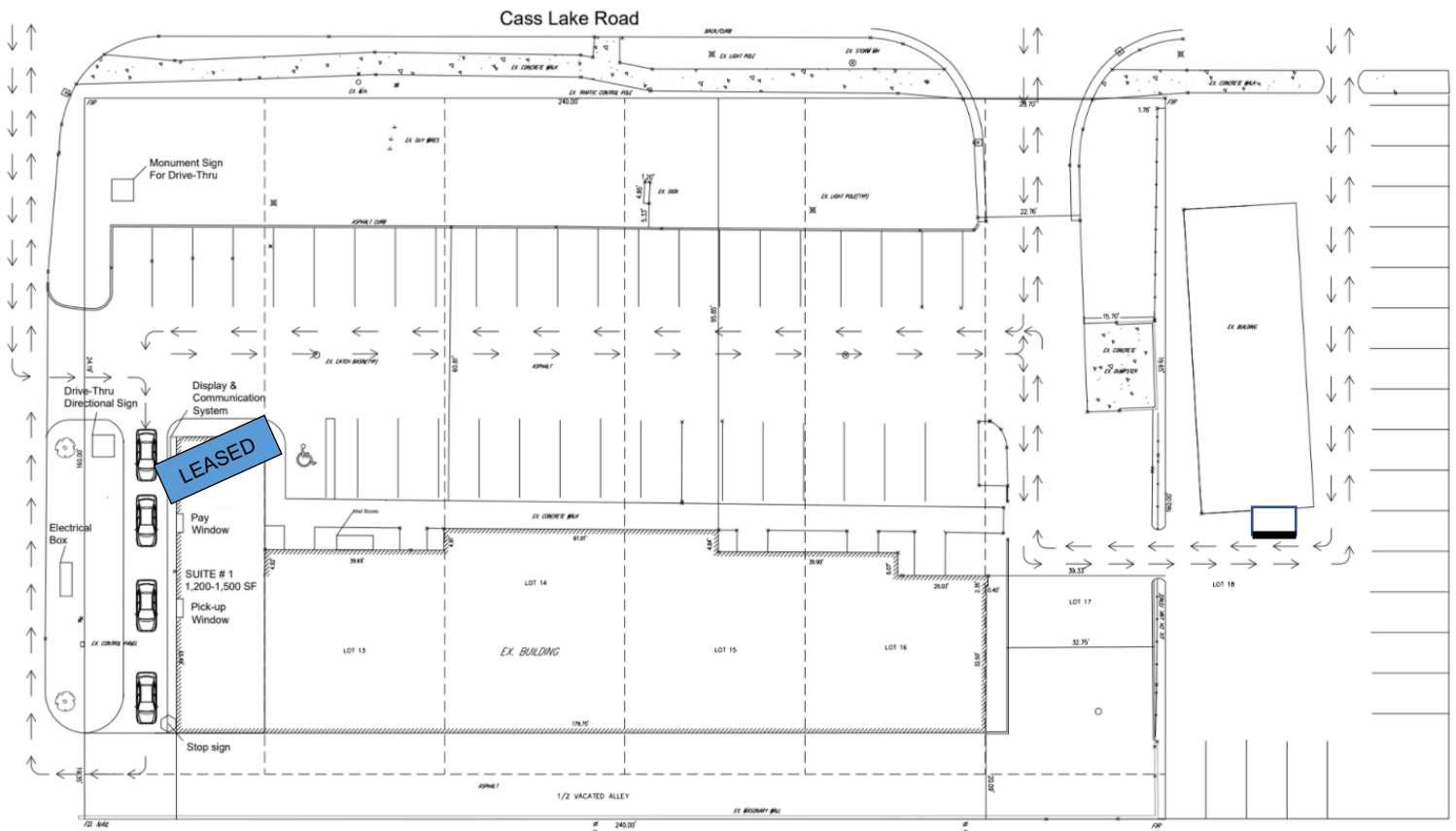


## FLOOR PLAN



2066 Cass Lake Road  
Keego Harbor, MI 48320

**DRIVE-THRU  
 SITE PLAN**





**AERIAL MAP**  
**Keego Harbor, MI**



Gibbs Planning Group is currently leading a six-month master planning process to explore the transformation of Cass Lake Road into a traditional walkable village.