

# 130 5TH AVE

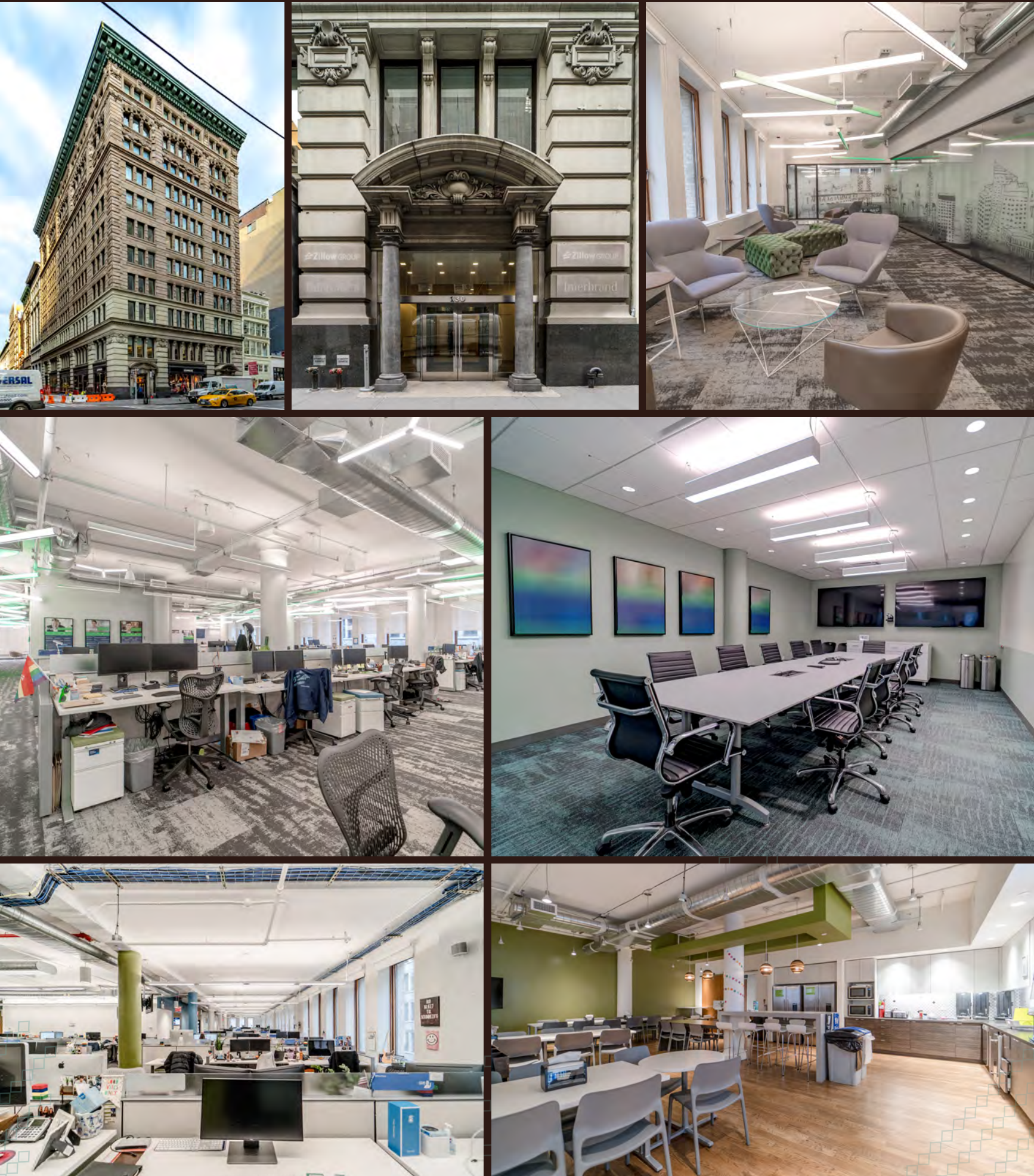
**ENTIRE 6TH, 7TH, 8TH, 9TH FLOORS**  
**13,300 RENTABLE SQUARE FEET ON EACH FLOOR**  
**53,200 RSF TOTAL**

POSSESSION: Arranged // TERM: Through October 2024 // RENT: Negotiable

PRIME UNION SQUARE LOCATION OPEN FLOOR

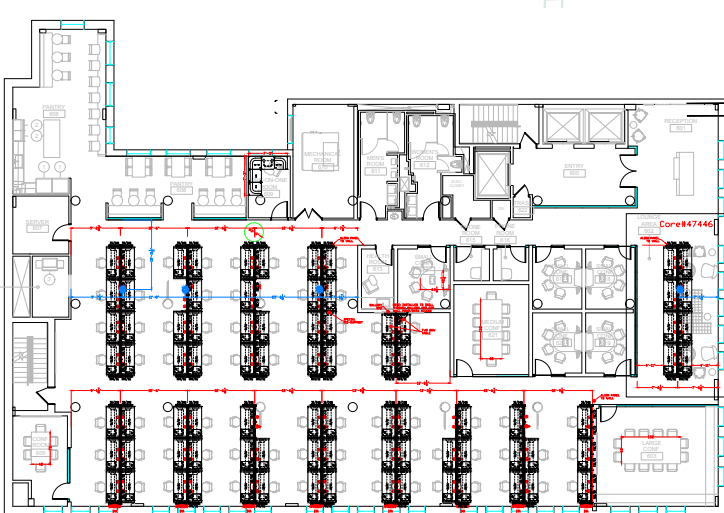
PLAN IDEAL FOR HIGH DENSITY TAMI USERS

FURNITURE AVAILABLE



## 6TH FLOOR: 13,300 RSF

Total Headcount: 76 (wired/configured to add 8)



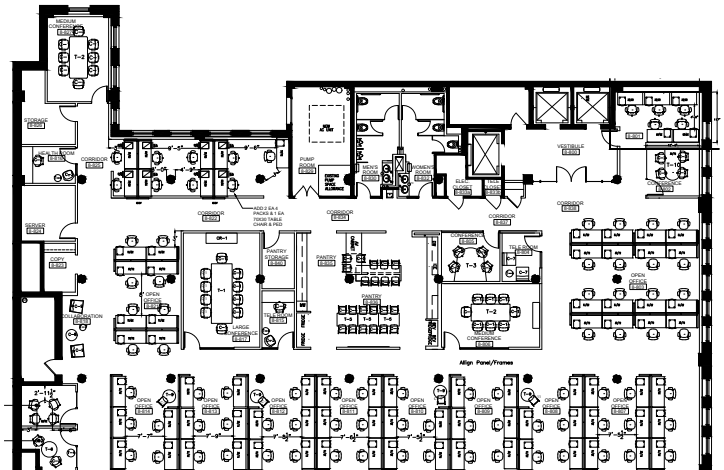
## 7TH FLOOR: 13,300 RSF

Total Headcount: 77 (wired/configured to add 4)



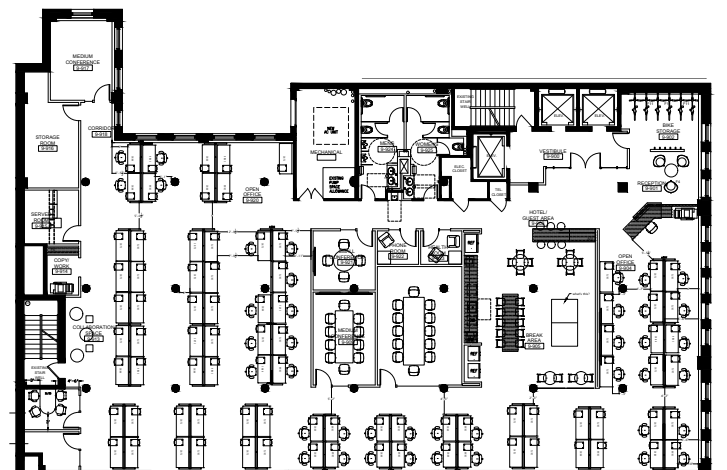
## 8TH FLOOR: 13,300 RSF

Total Headcount: 80 (wired/configured to add 5)



## 9TH FLOOR: 13,300 RSF

Total Headcount: 91



FOR MORE INFORMATION, PLEASE CONTACT:

**JUSTIN HALPERN**  
 Senior Director  
 212-841-7543  
 justin.halpern@cushwake.com

**EDWARD WARTELS**  
 Senior Director  
 212-841-7541  
 ed.wartels@cushwake.com

**JACK ORTLIEB**  
 Associate  
 212-841-7975  
 jack.ortlieb@cushwake.com



A full commission computed and earned in accordance with the rates and conditions of our agency agreement with our principal, when received from our principal, will be paid to the cooperating broker who consummates a lease which is unconditionally executed and delivered by and between lessor and lessee (a copy of the rates and conditions referred to above is available upon request).