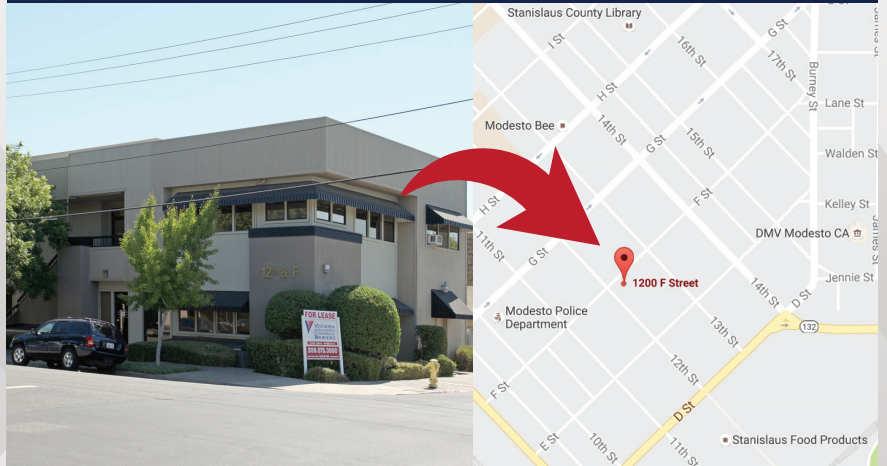


Office Property For Lease 1200 F Street, Modesto

PROPERTY DESCRIPTION

- Rental Rate: \$12 /SF/Year
- Lease Type: Modified Gross
- Building Size: 4,044 SF
- Min. Divisible: 989 SF
- Max. Contiguous: 2,346 SF
- Building Class: C
- Year Built: 1981
- Lot Size: 5,227 SF
- Parking Lot & Street Parking Available

3 OFFICE UNITS AVAILABLE IN THE HAN BUILDING



Property is located in downtown Modesto close to

- CA Highways 99, 132, and 108,
- Modesto Police Department,
- Stanislaus County Superior Court,
- Modesto DMV Office.

For more information, please give us a call

BRIAN VELTHOEN, CCIM

CalBRE #00680719

209.338.0370 | brianv@pmz.com

REBECCA ELLIS

CalBRE #01748227

209.338.0380 | rellis@pmz.com



PMZ COMMERCIAL
SINCE 1957 REAL ESTATE