



FOR LEASE

# 135 East 157th Street

GARDENA, CA 90248



## Rare small freezer/cooler warehouse space available

**JOHN ANTHONY, SIOR**

213.225.7218

[john.anthony@kidder.com](mailto:john.anthony@kidder.com)

LIC N° 01226464

**CHRISTOPHER STECK**

213.225.7231

[christopher.steck@kidder.com](mailto:christopher.steck@kidder.com)

LIC N° 01841338

**CHRISTOPHER GIORDANO**

213.225.7219

[christopher.giordano@kidder.com](mailto:christopher.giordano@kidder.com)

LIC N° 01928706

**Kidder  
Mathews**

This information supplied herein is from sources we deem reliable. It is provided without any representation, warranty, or guarantee, expressed or implied as to its accuracy. Prospective Buyer or Tenant should conduct an independent investigation and verification of all matters deemed to be material, including, but not limited to, statements of income and expenses. Consult your attorney, accountant, or other professional advisor.

[KIDDER.COM](http://KIDDER.COM)

**FOR LEASE**

**135 East 157th Street**

GARDENA, CA 90248

**3,965**

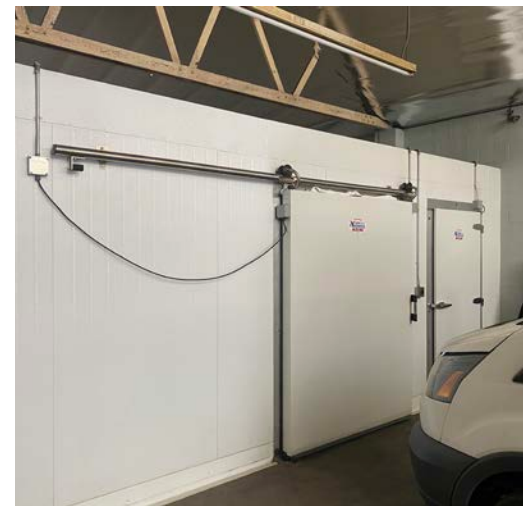
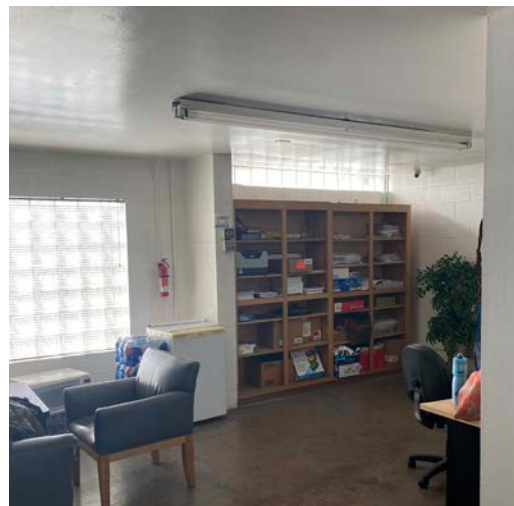
**SQUARE FEET**

**\$2.00/SF**

**NNN LEASE RATE**

**\$0.24/SF**

**NNN CHARGES**



**JOHN ANTHONY, SIOR**

213.225.7218

[john.anthony@kidder.com](mailto:john.anthony@kidder.com)

LIC N° 01226464

**CHRISTOPHER STECK**

213.225.7231

[christopher.steck@kidder.com](mailto:christopher.steck@kidder.com)

LIC N° 01841338

**CHRISTOPHER GIORDANO**

213.225.7219

[christopher.giordano@kidder.com](mailto:christopher.giordano@kidder.com)

LIC N° 01928706

**KIDDER.COM**

This information supplied herein is from sources we deem reliable. It is provided without any representation, warranty, or guarantee, expressed or implied as to its accuracy. Prospective Buyer or Tenant should conduct an independent investigation and verification of all matters deemed to be material, including, but not limited to, statements of income and expenses. Consult your attorney, accountant, or other professional advisor.

**km Kidder Mathews**

**FOR LEASE**

# 135 East 157th Street

GARDENA, CA 90248

## Property Highlights

**FREEZER/COOLER SPECS** 48' by 25' by 9'. 2x scroll compressors. Temperature min -5 degrees

**POWER** 400 amps, 240/140v, 3-phase

**CLEAR** 11' min

**SECURED & GATED** parking lot

**EASILY ACCESSIBLE** to 110, 91, and 405 freeways

**ROLL UP** door

**SMALL** office area

**JOHN ANTHONY, SIOR**

213.225.7218

[john.anthony@kiddier.com](mailto:john.anthony@kiddier.com)

LIC N° 01226464

**CHRISTOPHER STECK**

213.225.7231

[christopher.steck@kiddier.com](mailto:christopher.steck@kiddier.com)

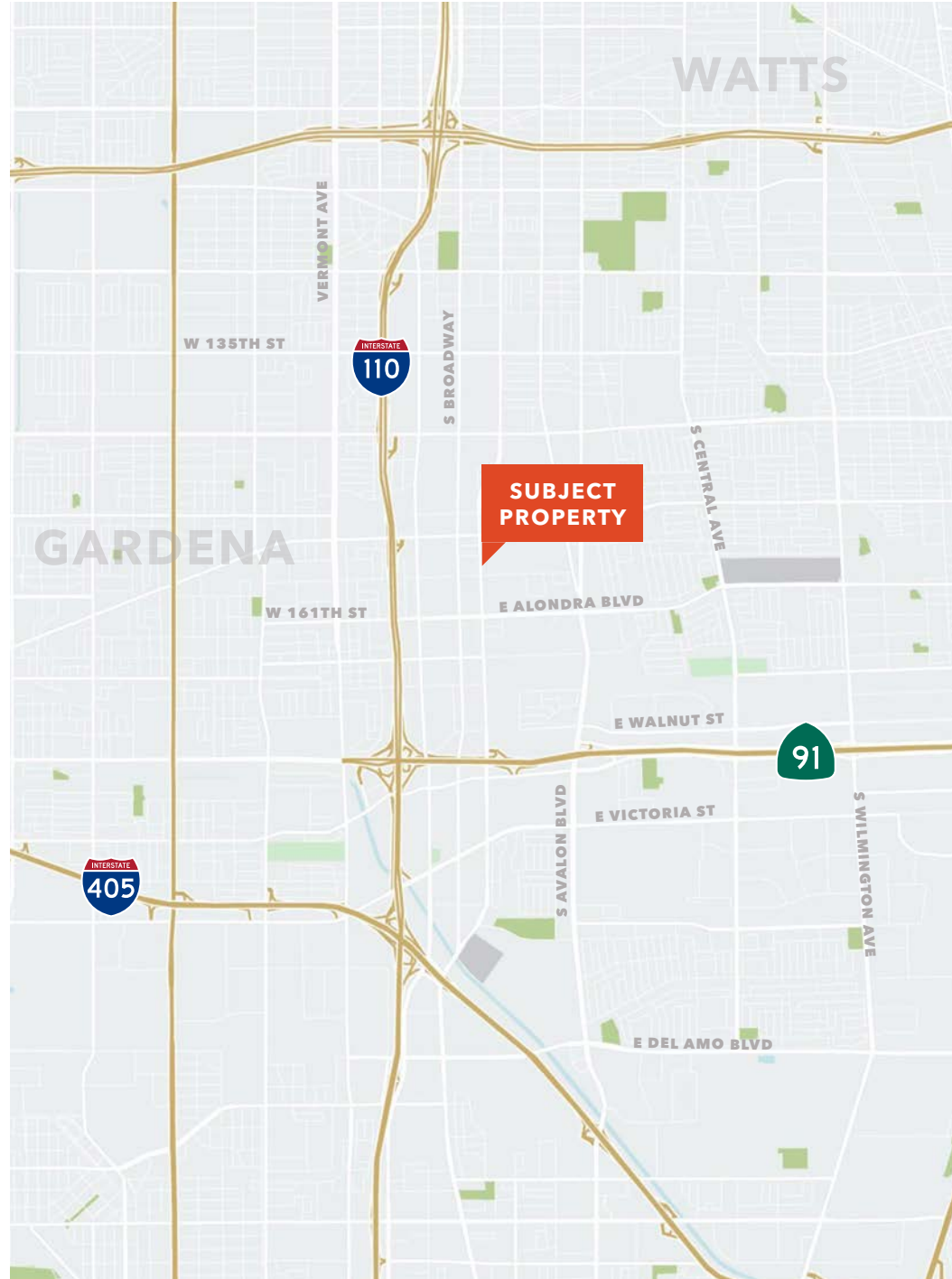
LIC N° 01841338

**CHRISTOPHER GIORDANO**

213.225.7219

[christopher.giordano@kiddier.com](mailto:christopher.giordano@kiddier.com)

LIC N° 01928706



[KIDDER.COM](http://KIDDER.COM)

**km** **Kidder Mathews**

This information supplied herein is from sources we deem reliable. It is provided without any representation, warranty, or guarantee, expressed or implied as to its accuracy. Prospective Buyer or Tenant should conduct an independent investigation and verification of all matters deemed to be material, including, but not limited to, statements of income and expenses. Consult your attorney, accountant, or other professional advisor.

**FOR LEASE**

# 135 East 157th Street

GARDENA, CA 90248



[KIDDER.COM](https://www.kidder.com)

This information supplied herein is from sources we deem reliable. It is provided without any representation, warranty, or guarantee, expressed or implied as to its accuracy. Prospective Buyer or Tenant should conduct an independent investigation and verification of all matters deemed to be material, including, but not limited to, statements of income and expenses. Consult your attorney, accountant, or other professional advisor.

**km** Kidder  
Mathews