

FOR LEASE Manufacturing Facility

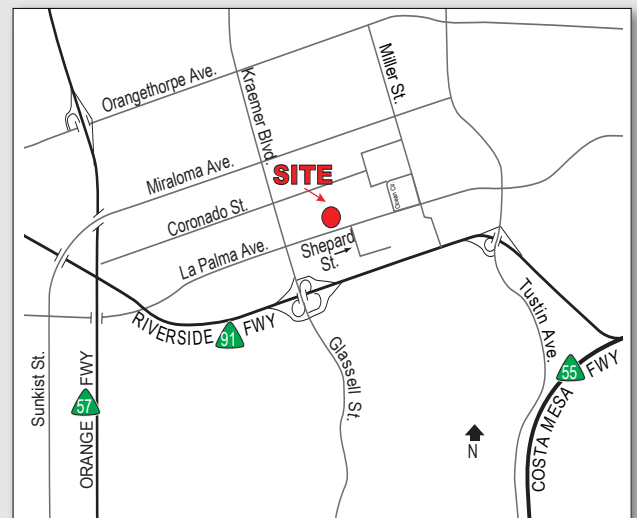
±76,824 Square Feet



3191 E. La Palma Avenue, Anaheim

Property Details

- ±23,600 Square Feet of Two-Story Office
- Excellent Manufacturing Facility
- La Palma Avenue Frontage
- Adjacent to New Panattoni Development
- Drive Around Building
- 3,000 Amps of 277/480 Volt Electrical Distributed Electrical
- 26' Clearance
- (4) Ground Level Loading Doors (Expandable)
- (1) Truck Well Loading Door
- Fenced Yard
- 2.6:1 Park
- Shop Restrooms
- 100% HVAC Building
- East Anaheim Corridor Location
- Immediate Freeway Access



Mitch Zehner

714.935.2307
mzehner@voitco.com
Lic.#00882464

Seth Davenport

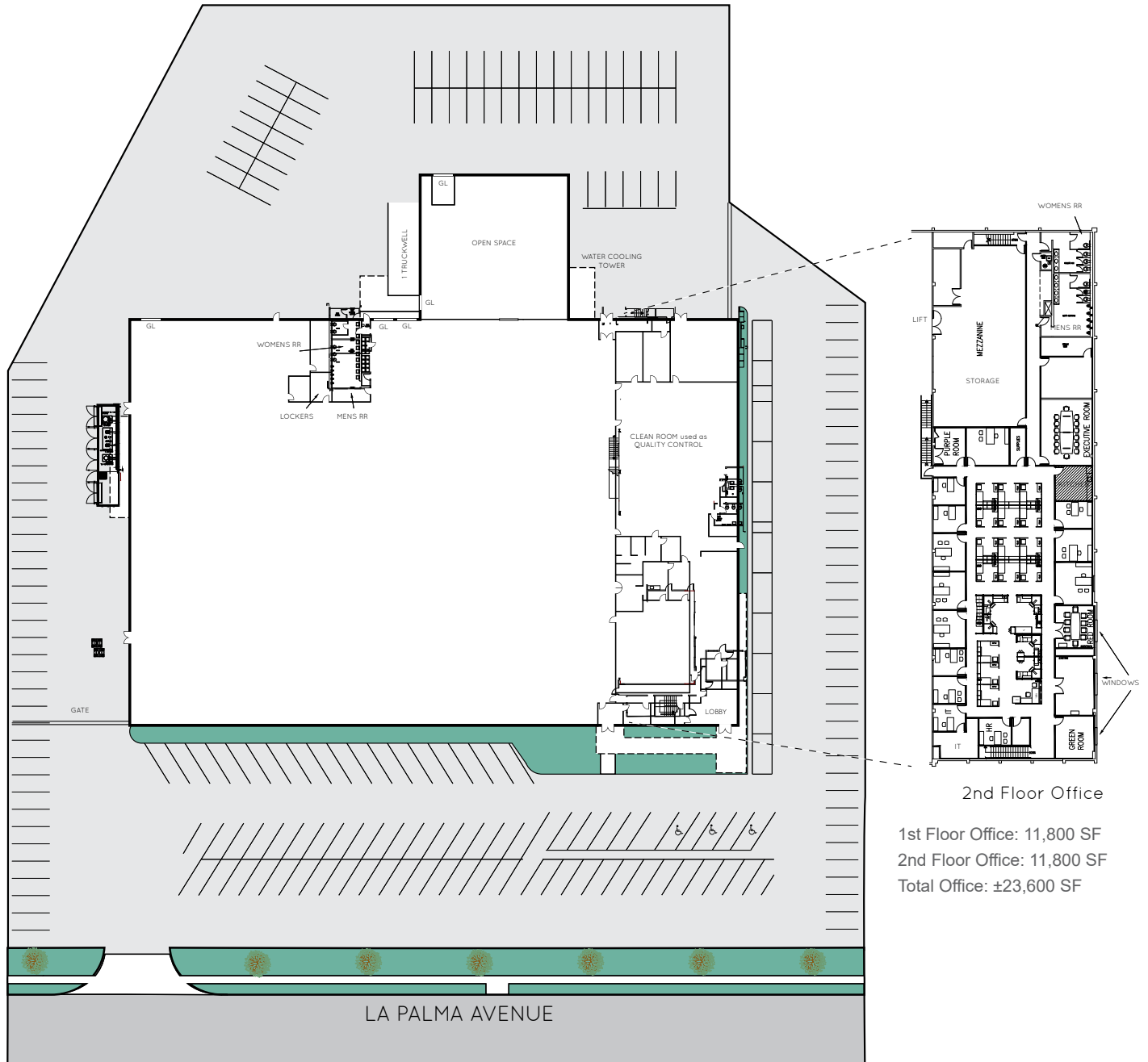
714.935.2376
sdavenport@voitco.com
Lic.#01413387

Voit
REAL ESTATE SERVICES

**THE ZEHNER
DAVENPORT**
INDUSTRIAL GROUP

FOR LEASE Manufacturing Facility

±76,824 Square Feet



2nd Floor Office

1st Floor Office: 11,800 SF
2nd Floor Office: 11,800 SF
Total Office: ±23,600 SF

*Site Plan Not to Scale

Mitch Zehner
714.935.2307
mzehner@voitco.com
Lic.#00882464

Seth Davenport
714.935.2376
sdavenport@voitco.com
Lic.#01413387

Voit
REAL ESTATE SERVICES

**THE ZEHNER
DAVENPORT**

2400 E. Katella Avenue, Suite 750, Anaheim, CA 92806 | 714.978.7880 Phone | 714.978.8329 Fax | Lic #01991785 | voitco.com | zehnerdavenport.com

Licensed as Real Estate Brokers by the CA Bur of Real Estate. The information contained herein has been obtained from sources we deem reliable. While we have no reason to doubt its accuracy, we do not guarantee it. ©2017 Voit Real Estate Services, Inc. All Rights Reserved. Real People. Real Solutions.® is a registered trademark of Voit Real Estate Services.