



121 VARICK STREET

Located On The Corner Of Dominick Street



PROMINENT **CORNER OFFICE** WITH
SOARING CEILINGS IN HUDSON SQUARE

 **SINVIN**
COMMERCIAL REAL ESTATE & ADVISORY

OFFICE DETAILS:

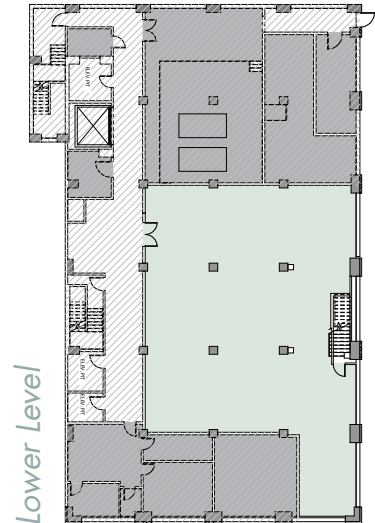
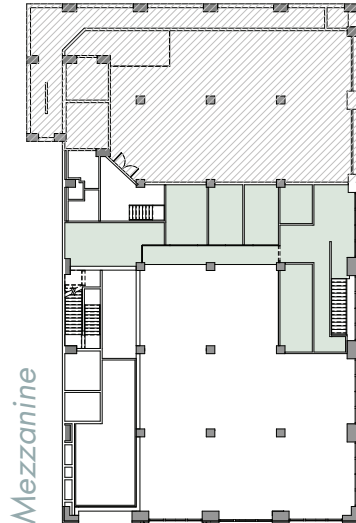
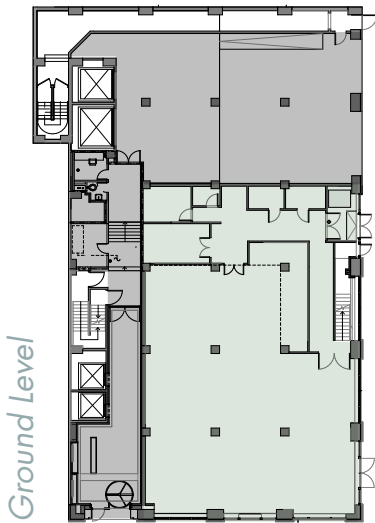
Ground Level: **6,248 RSF** | Mezzanine: **2,023 RSF** | Total Size: **8,271 RSF**

Also Available For Retail Use With 4,582 RSF Legal Selling Lower Level

Wraparound Frontage: **138' (54' on Varick, 84' on Dominick)** | Ceiling Height: **18'**

Term: **Negotiable** | Possession: **Immediate** | Asking Rent: **Please Inquire**

Logical Divisions Considered | Additional Ground Level Space Can Be Made Available



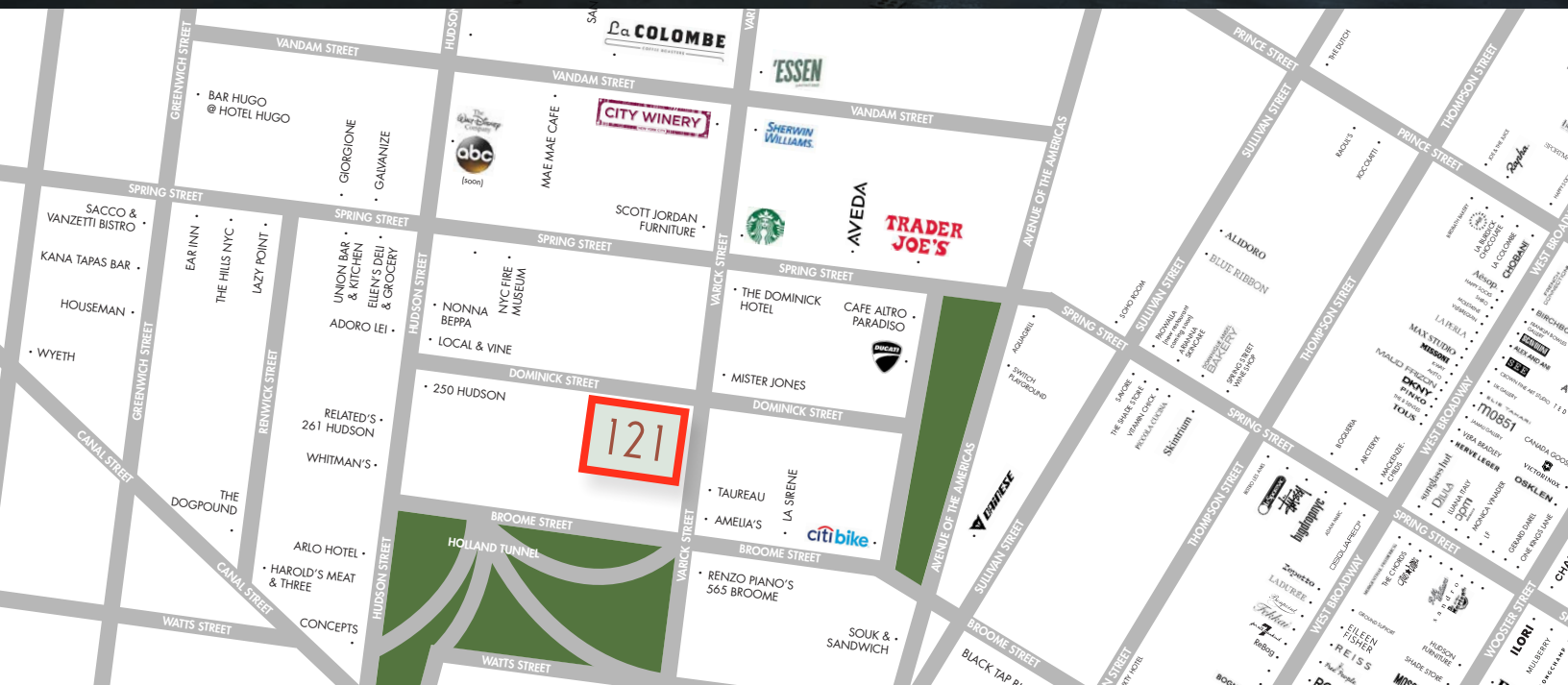


SPACE FEATURES:

- Situated at the epicenter of Soho, Tribeca, and Hudson Square (blocks from 1/A/C/E Subways)
- Located across the street from Renzo Piano's new 30-story luxury residential building, 565 Broome
- Two blocks from ABC's 1 million square foot headquarters (coming soon)
- Building's facade was recently cleaned and restored

NEIGHBORS INCLUDE:

- The Dominick Hotel
- Aveda Salon
- Cafe Altro Paradiso
- Dainese
- Trader Joe's
- Whitman's NYC
- La Colombe
- Vespa
- Starbucks
- Arlo Hotel
- WeWork
- Aquagrill
- Ducati
- Cadillac House
- Sherwin Williams
- ABC HQ (soon)





PLEASE CONTACT:

Michael Glanzberg

212.604.9004

michael@sinvin.com

Elliott Mishan

646.673.8786

elliott@sinvin.com

 **SINVIN**
COMMERCIAL REAL ESTATE & ADVISORY



Legal Selling Lower Level