

SAN ANTONIO, TX

THE
CREAMERY
BLDG



BRYAN SETHNEY
Managing Director
+1 210 305 4280
bryan.sethney@cushwake.com



 CUSHMAN &
WAKEFIELD

LOCATION



THE
CREAMERY
BLDG



PEARL

DOWNTOWN
SAN ANTONIO

RIVERWALK

MASTER - PLANNED

OFFICE &
MULTIFAMILY
ENVIRONMENT

CUSHMAN & WAKEFIELD

BRYAN SETHNEY | +1 210 305 4820 | bryan.sethney@cushwake.com



45,899 SF

OFFICE

(Divisible from 2,100- 45,899 RSF)

6,583 SF

RESTAURANTS/

AMENITIES IN OFFICE

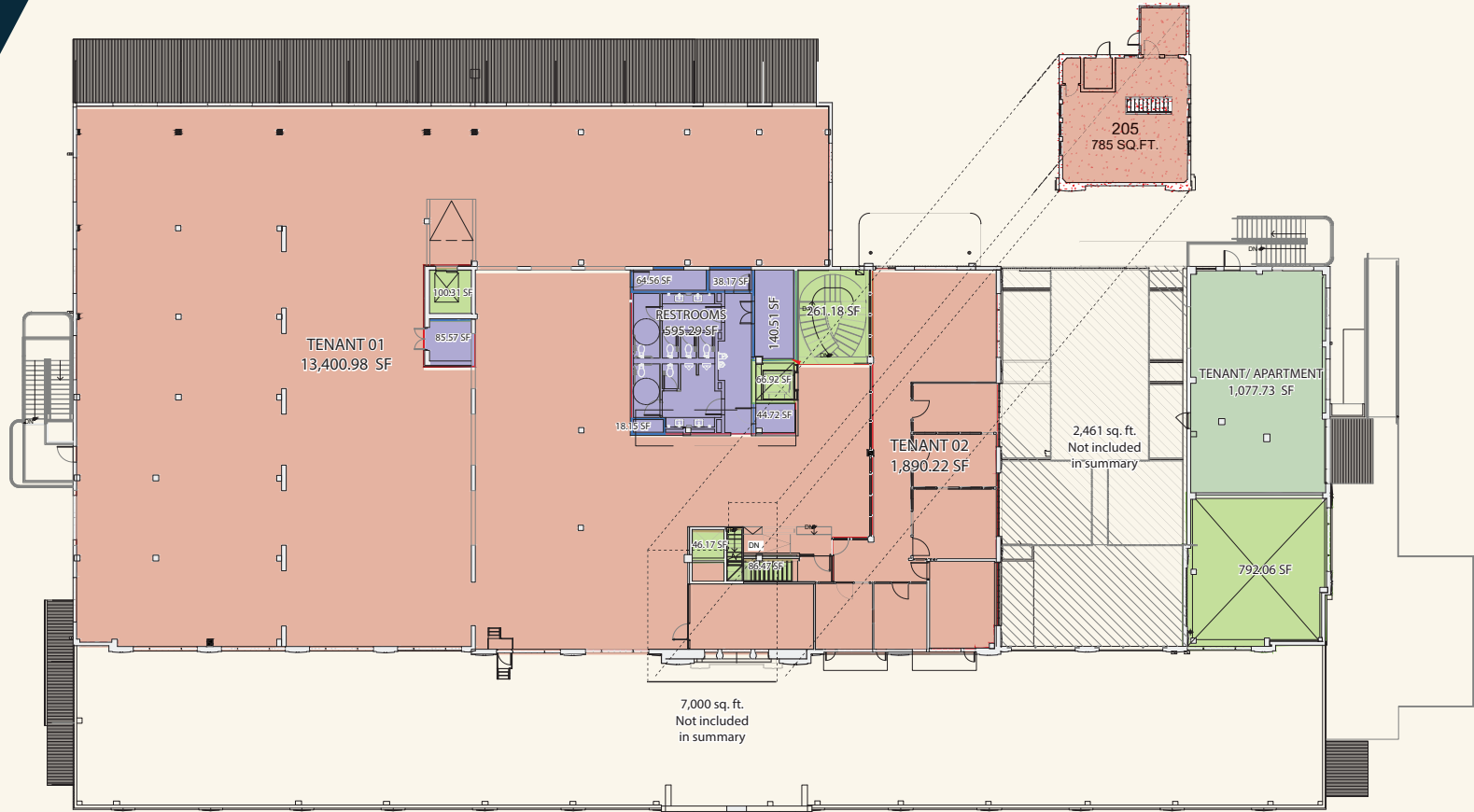






2ND FLOOR

18,380 RSF





THE
CREAMERY
BLDG

BRACKENRIDGE PARK
GOLF COURSE



JOSEPHINE
GRAYSON

RIVERWALK

BROADWAY

ST MA

STAY
Hotel Emma



FUN, FOOD & DRINKS

- | | |
|---------------------------|------------------------|
| Amphitheater at Pearl | La Gloria |
| Bakery Lorraine | High Street Wine Co. |
| The Bar at Bottling Dept. | Savor |
| Blue Box Bar | Southerleigh |
| Boiler House | Fine Food & Brewery |
| Botika | Supper |
| Bud's Southern Rotisserie | Tenko Ramen |
| Cured | Jazz, TX |
| Down on Grayson | Lick Honest Ice Creams |
| Fletcher's Hamburgers | Larder |
| Green | Local Coffee Founders |
| Josephine Street | Sam's Burger Joint |
| | Sternwirth |

FUN, FOOD & DRINKS

- | | |
|---------------------|---------------------|
| Guillermo's | Artisan Distillery |
| Paramour | Roadmap Brewing Co. |
| Social Spot | La Roca Cantina |
| Ventura San Antonio | Augie's BBQ |
| VFW Post 76 | Shiro Sushi |
| Brooklyn Square | Tre Trattoria |
| The Brooklynite | Pharm Table |
| Pete's Tako House | Oasis Mexican Cafe |

STAY

- | | |
|-----------------|--------------|
| Wyndham Garden | Hotel Havana |
| El Tropicano | Hotel Indigo |
| Riverwalk Hotel | San Antonio |
| Villa Maria | House |

JONES AVE

NORTH RIVER



THE
CREAMERY
BLDG



- | | |
|-----------------------------|-------------------------------------|
| 1. E Quincy Apartments | 8. Riverhouse Apartments |
| 2. The Cellars Apartments | 9. Riverwalk Apartment Development |
| 3. Brewery South (Proposed) | 10. 1221 Broadway |
| 4. The Can Plant Residences | 11. 350-Unit Development (Proposed) |
| 5. The Can Plant 2 | 12. Rivera Luxury Apartments |
| 6. The Mosaic | 13. Oxbow |
| 7. 1800 Broadway | 14. The Soto |