

# SAVE-A-LOT | SUBLEASE

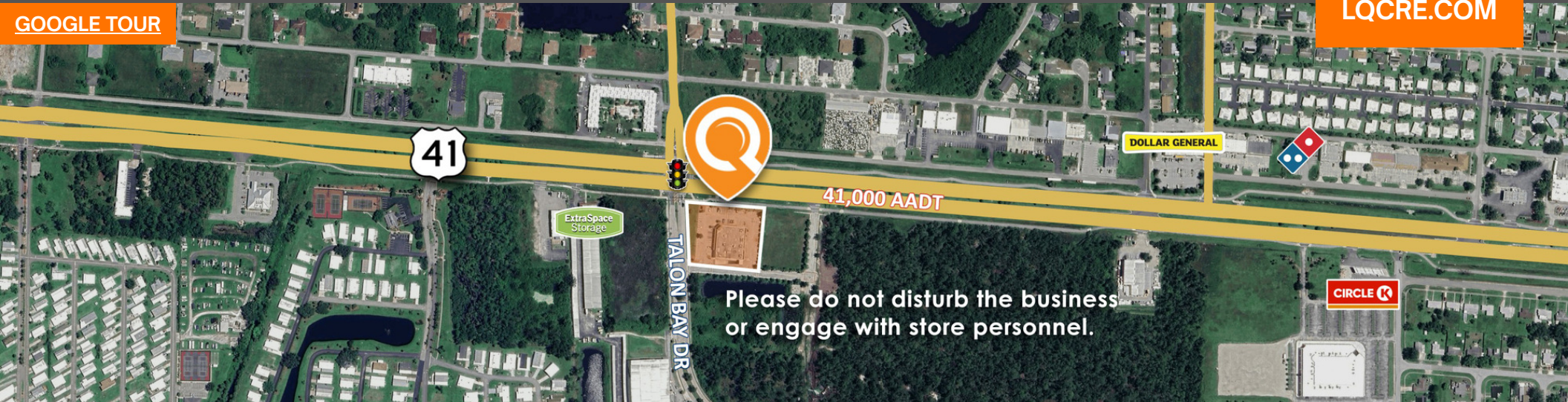
12600 Tamiami Trl S | North Port, FL 34287  
Freestanding Retail Building For Sublease



LQ Commercial  
REAL ESTATE SERVICES

LQCRE.COM

GOOGLE TOUR



CALL FOR  
RATES



14,740 SF  
BUILDING SIZE



1.87 ACRES  
SIZE



2009  
BUILT

- 14,740 SF Freestanding Retail Building for sublease in North Port, FL
- S Tamiami Trail (US-41) AADT: 41,000 CPD
- Signalized intersection at the hard corner of US-41 and Talon Bay Dr
- Tamiami Trail frontage with excellent visibility and access
- Across from the main entrance to Warm Mineral Springs
- Close proximity to the Master Planned Community of Wellen Park and Benderson's Coco Plum Shopping Center



5-MI POPULATION  
**60,719**



US-41 AADT  
**41,000 CPD**



5-MI AVG HH INCOME  
**\$107,537**



5-MI # EMPLOYEES  
**10,071**

[PROPERTIES.LQCRE.COM/SAVE-A-LOT-NORTH-PORT](https://PROPERTIES.LQCRE.COM/SAVE-A-LOT-NORTH-PORT)



5440 Mariner St #112  
Tampa, FL 33609  
LQCRE.COM

Michelle Matson

Senior Associate

D: 813.288.0020 x115

C: 781.929.6401

[mmatson@lqcre.com](mailto:mmatson@lqcre.com)

Information obtained from owner(s) or other sources deemed reliable. We have no reason to doubt its accuracy, but cannot guarantee it. All properties subject to change or withdrawal without notice.

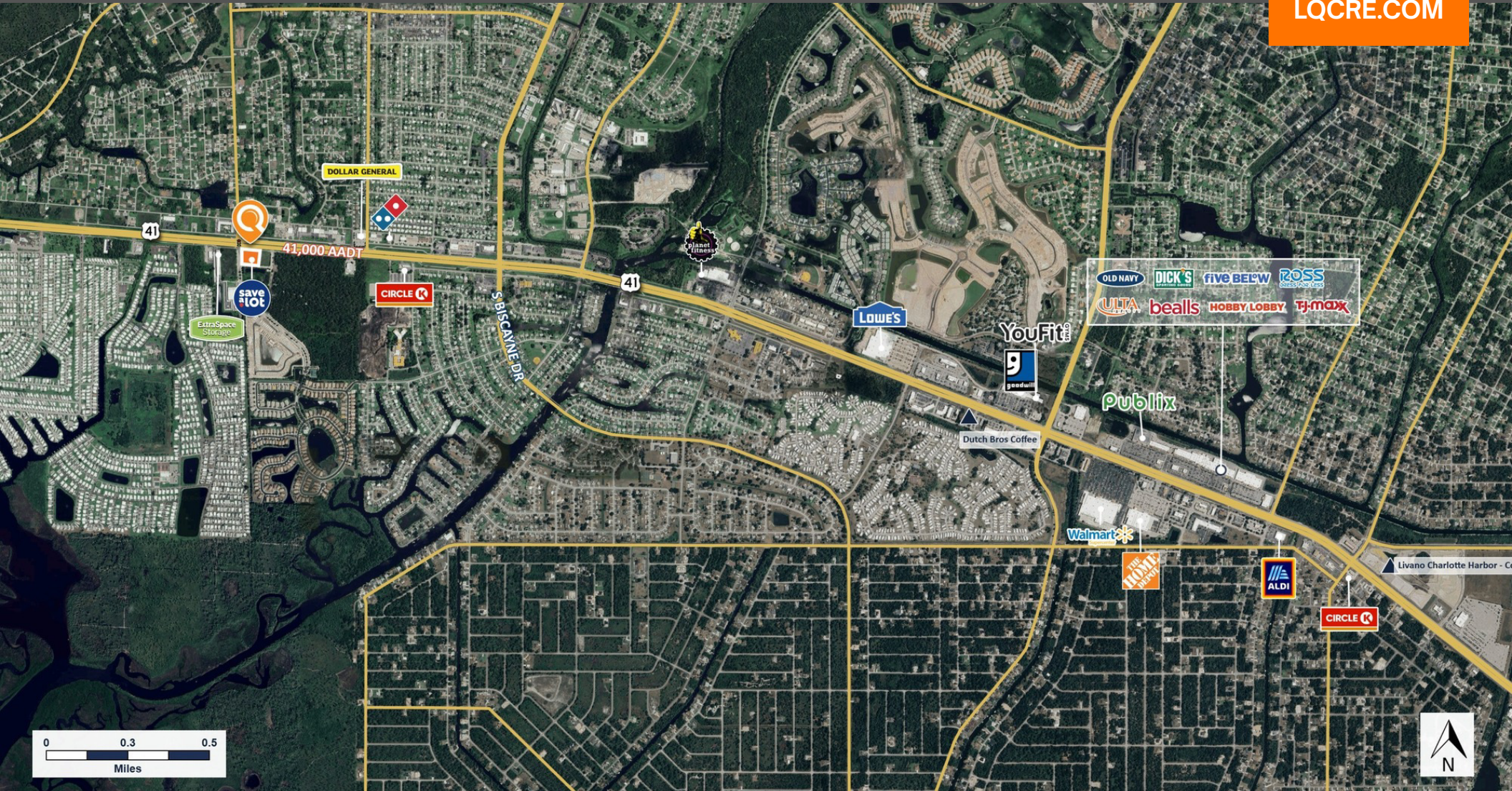
# SAVE-A-LOT | SUBLEASE

12600 Tamiami Trl S | North Port, FL 34287  
Freestanding Retail Building For Sublease



LQ Commercial  
REAL ESTATE SERVICES

LQCRE.COM



5440 Mariner St #112  
Tampa, FL 33609  
LQCRE.COM

Michelle Matson

Senior Associate

D: 813.288.0020 x115

C: 781.929.6401

mmatson@lqcre.com

Information obtained from owner(s) or other sources deemed reliable. We have no reason to doubt its accuracy, but cannot guarantee it. All properties subject to change or withdrawal without notice.