

the gatehouse

WESTWAY ■ RENFREW ■ GLASGOW ■ PA4 8DJ

CANMOOR

NEWLY REFURBISHED  
OFFICE SUITES



# Modern Open Plan Office Suites 100 sq ft - 4,000 sq ft **TO LET**

- Secure business environment
- Generous car parking
- On site café
- 24 hour access – on site management team
- Affordable office space
- Competitive lease terms
- Exceptional value for money

# GLASGOW

[www.westway-park.com](http://www.westway-park.com)

# the gatehouse

WESTWAY ■ RENFREW ■ GLASGOW ■ PA4 8DJ



## DESCRIPTION

The Gatehouse provides high quality office accommodation benefiting from a significant refurbishment. The suites offer a variety of accommodation to satisfy a wide range of business needs from one person rooms to requirements up to 4,000 sq ft.



Recently  
refurbished



Flexible floor  
areas available



On site cafe



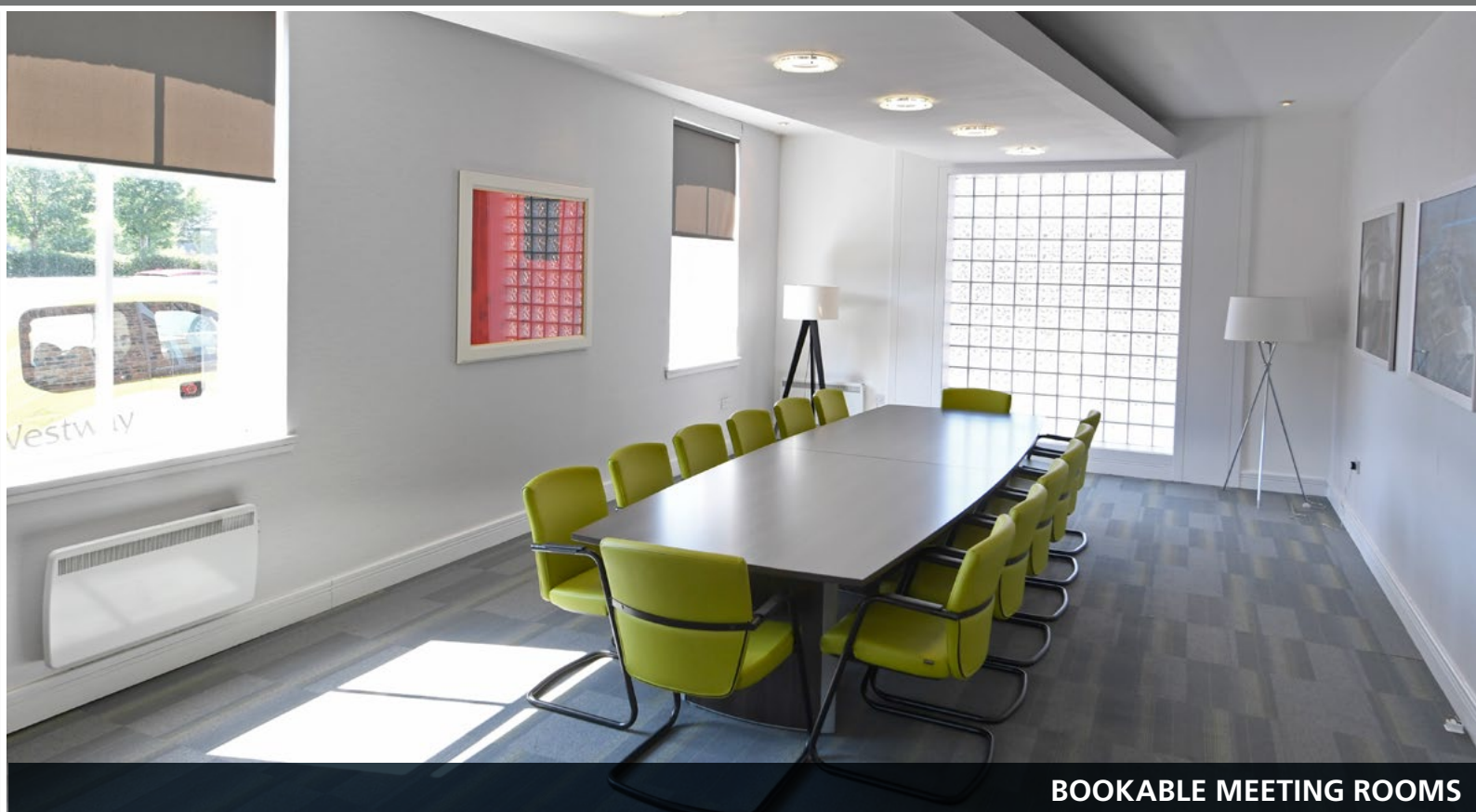
Double glazing



Meeting and conference  
rooms for hire

# GLASGOW





**BOOKABLE MEETING ROOMS**



**SECURE DOOR ENTRY**



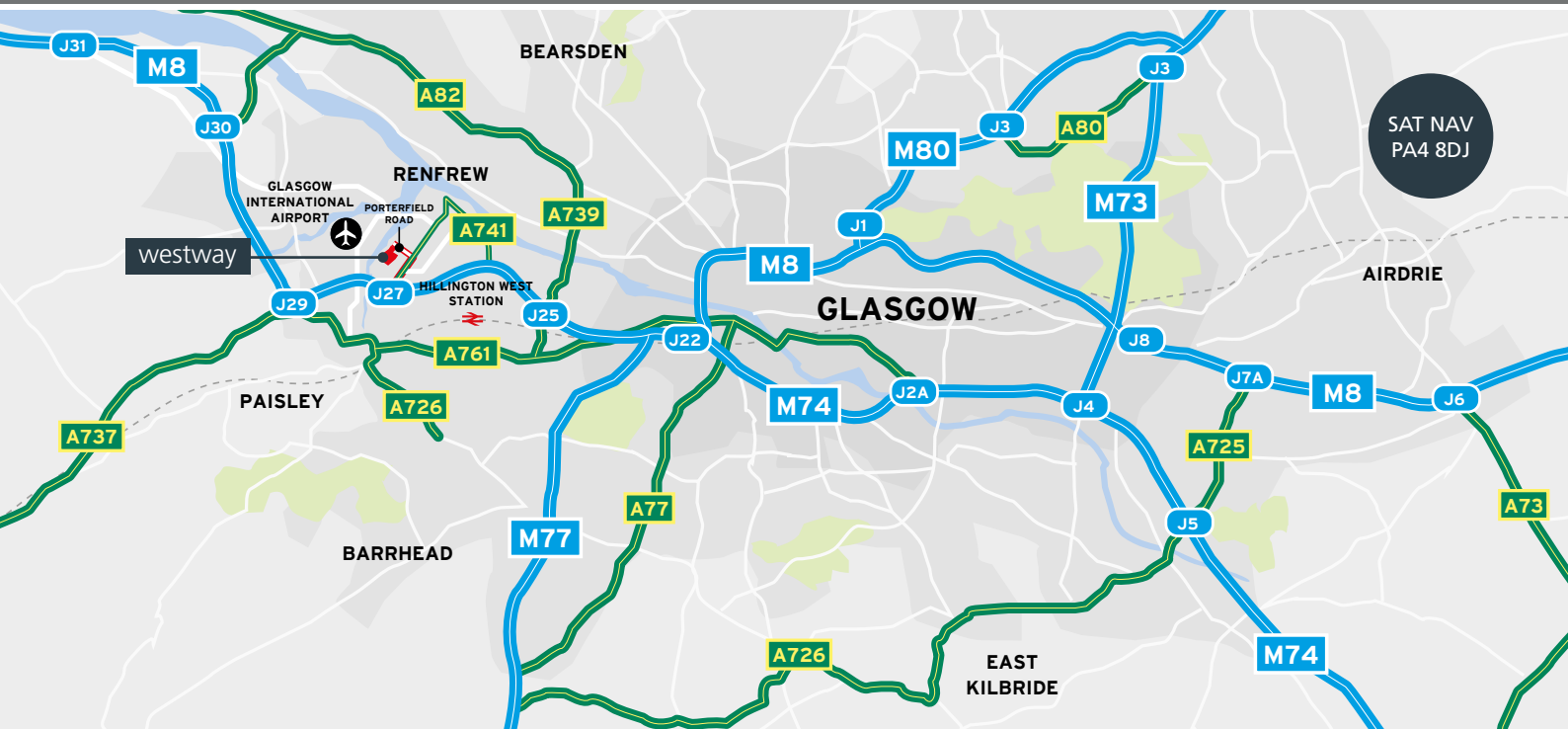
**24 HR SECURITY**

## ACCOMMODATION

The Gatehouse offers a wide range of office accommodation which will suit all kinds of business requirements. All of the business spaces at The Gatehouse are unique, ranging from small open plan offices to larger self-contained suites, all of which enjoy access to kitchen facilities. A viewing of the Gatehouse is recommended in order to fully appreciate the office accommodation on site.



**ON-SITE CAFE**



## LOCATION

Westway, in Renfrew, comprises a 130 acre self-contained site providing a mixture of office and industrial properties within a well maintained, fully secure estate.

Westway lies approximately 10 miles west of Glasgow City Centre and 2 miles east of Glasgow International Airport. Access to the site is gained via Junction 27 (a four way junction) of the M8 motorway. The main entrance is situated on Porterfield Road just off the A741 which is the main arterial route into Renfrew from the M8.

Major occupiers of the site include Doosan Babcock, AMG Group, Kintetsu World Express and Star Refrigeration.

## COMMUNICATIONS

|                                 |           |
|---------------------------------|-----------|
| J27 - M8                        | 1.2 miles |
| J26 - M8                        | 2.3 miles |
| Glasgow Airport                 | 2.3 miles |
| Paisley Town Centre,            | 3 miles   |
| Hillington West Station         | 3 miles   |
| Glasgow City Centre             | 7 miles   |
| Prestwick International Airport | 42 miles  |

## EPC

First Floor - EPC Rating C

## VAT

All figures quoted are exclusive of VAT

## VIEWING

Strictly through our joint agents



**Meg Beattie**  
0141 567 6631  
meg.beattie@eu.jll.com



**Alex Mackay**  
0141 566 6011  
alex.mackay@knightfrank.com