



# PRIVATE OFFICE

## FOR SUBLEASE

### 1,000 SQ FT

Monthly Rent: \$2,029.19

#### Features

- Ample parking
- Great Area
- Walk to great food
- Fiber ready
- Recently updated
- 900 sq ft outdoor deck
- Private Entrance
- Quiet & peaceful
- 2nd Floor
- Elevator Access
- Full Service\*

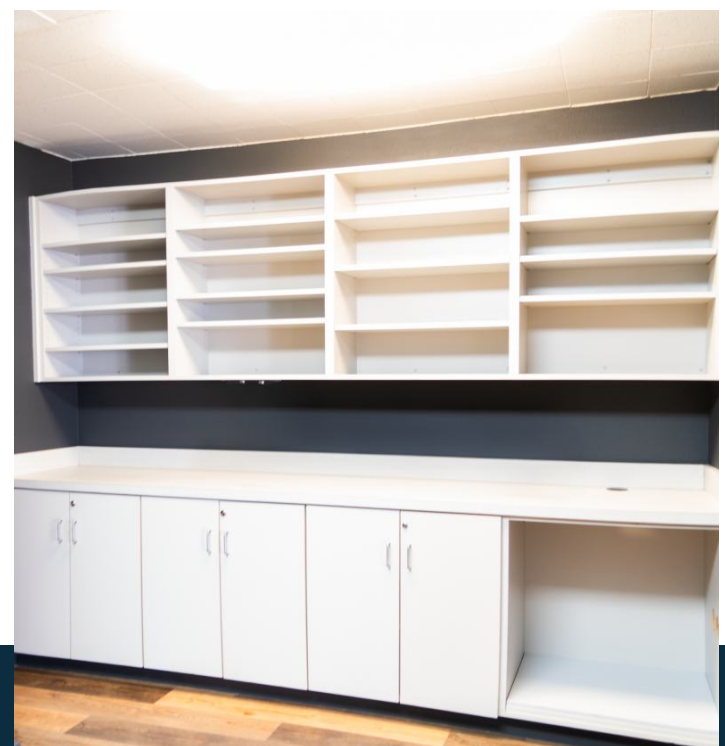


## 311 B AVE, SUITE N LAKE OSWEGO

**SCOTT WEIGEL,**  
BROKER  
scottw@crmgco.com  
(503) 802-2538

**JILL KEOPPEL,**  
PRINCIPAL BROKER  
jillk@crmgco.com  
(971) 353-2079





## About the Space

Quiet and comfortable, professional office space available for rent in Downtown Lake Oswego. Easy walk to great coffee shops, restaurants, banks, recreation and more!

Ideal for businesses with 2 to 5 employees. Setup for extremely fast internet and wi-fi and multiple computers.

The office is quiet, professional and private. The spacious 1,000 sq ft deck has been recently repaired and upgraded, ensuring a tidy and inviting outdoor area for breaks or exercise. Park adjacent to the parking lot.

Oswego Business Suites on the corner of 3rd and B Street is ideally located for downtown Lake Oswego businesses. Elevator served. Break room. Professionally managed and onsite parking.

\*Lease is full Service net of janitorial.

**SCOTT WEIGEL** | BROKER | [scottw@crmngo.com](mailto:scottw@crmngo.com) | (503) 802-2538

**JILL KEOPPEL** | PRINCIPAL BROKER | [jillk@crmngo.com](mailto:jillk@crmngo.com) | (971) 353-2079

9400 SW BARNES RD 400, PORTLAND, OR 97225 | [www.ipmcrmngo.com](http://www.ipmcrmngo.com)



The information in this package was gathered from sources deemed reliable, however C&R Management Group makes no representation or warranty of the accuracy of the information. Any buyer or tenant considering purchase or lease of this property should confirm any and all information relied upon in making the decision to purchase or lease prior to finalizing the transaction and bears the risk of all inaccuracies.