

Office Space for Lease

www.526mainstreet.com



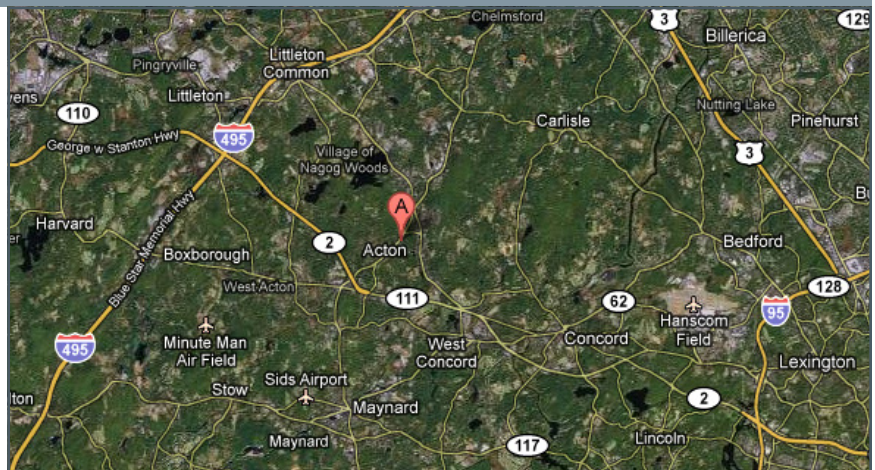
526 MAIN STREET, ACTON

SUMMARY

526 MAIN STREET is a spectacular three story 35,605 SF building that sits on 5.30 acres of meticulously maintained grounds. It is strategically located in Acton Center with convenient east and west-bound access on Route 27 and close proximity to both I-495 and Route 128 via Route 2. Fitchburg/Acton commuter rail is only six minutes away.

There are abundant local amenities including thriving retail centers, restaurants, banks and the Acton Central Post Office.

AERIAL



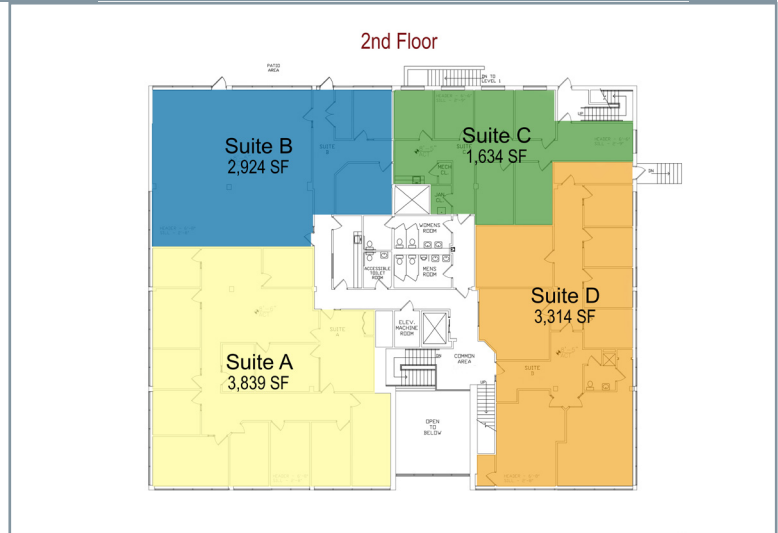
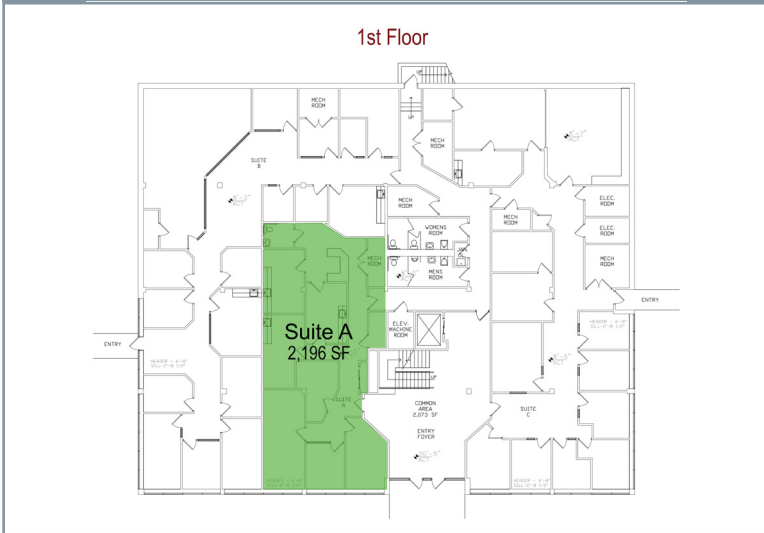
TO LEARN MORE CONTACT: O'BRIEN COMMERCIAL PROPERTIES, INC.
978-369-5500 | www.obriencommercial.com | sean@obriencommercial.com

526 MAIN STREET, ACTON

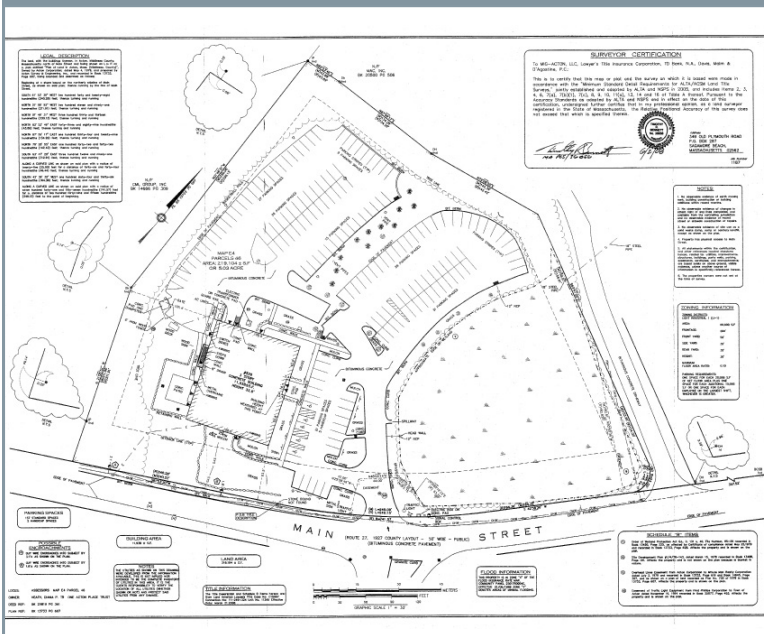
SPECIFICATIONS

Year Built:	1978	Type:	Office	Stories:	Three
Total SF:	36,000 SF	Land:	5.30 Acres	Elevator:	Yes
Total Available:	13,907 SF	Construction:	Steel Frame Ribbon Glass Line	Parking:	160 Spaces

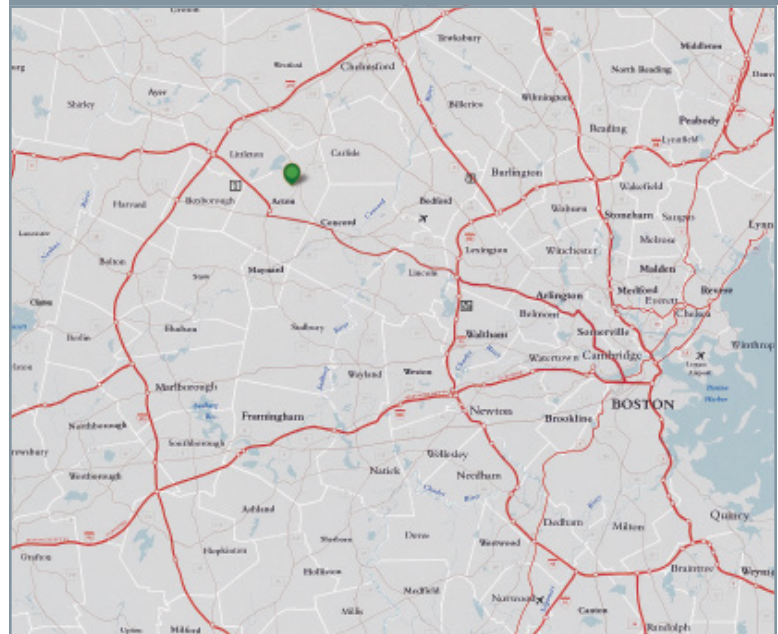
FLOOR PLANS



SITE PLAN



MAP



TO LEARN MORE CONTACT: O'BRIEN COMMERCIAL PROPERTIES, INC.
978-369-5500 | www.obriencommercial.com | sean@obriencommercial.com