

► 2-24 AC FOR RETAIL/OFFICE/ MULTIFAMILY DEVELOPMENT



FOR SALE // DEVELOPMENT LAND

SEC SR 32 & Hazel Dell Road // Noblesville IN 46062

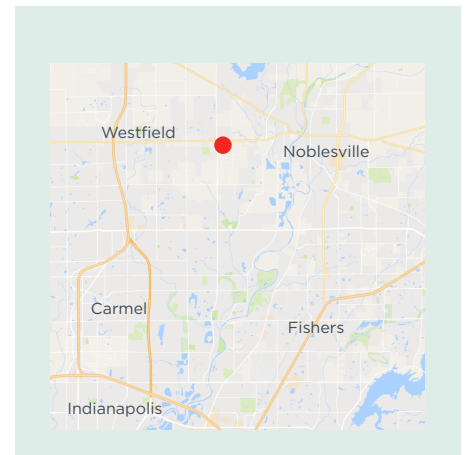


GREAT LOCATION // PATH OF PROGRESS

Parcel is located at the intersection of SR 32 and Hazel Dell Road, the crossroads for Noblesville, Westfield and Morse Reservoir.

PROPERTY DETAILS

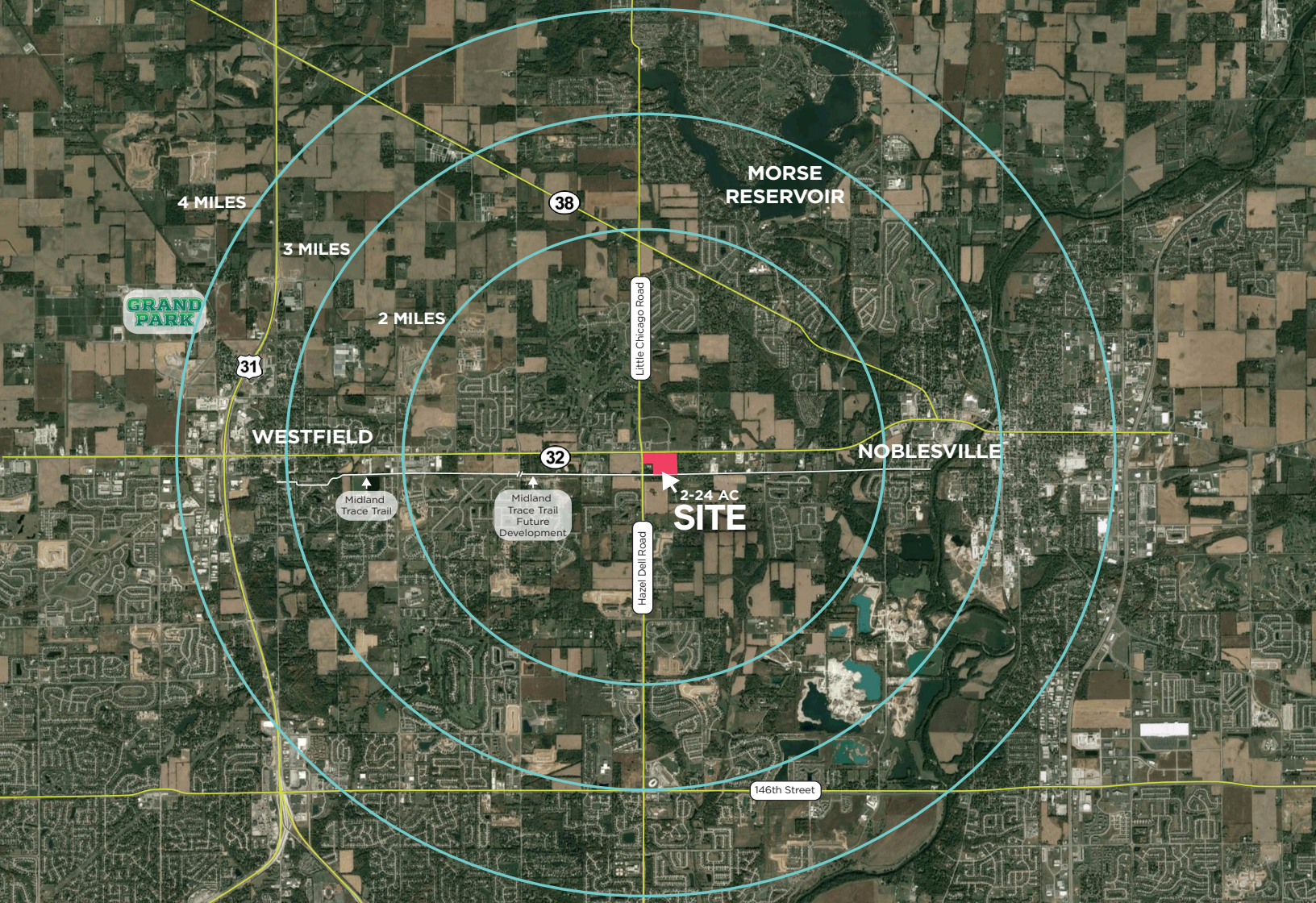
- + 2-24 acre development sites available
- + Zoning: mixed-use (retail, office, multifamily)
- + Sites from \$100,000-\$500,000 per acre



Ross Reller
Senior Vice President &
Dir. of Land Services
Direct 317.663.6552
Mobile 317.414.1101
ross.reller@rcre.com

Jeff Merritt
Principal
Direct 317.663.6537
Mobile 317.714.5423
jeff.merritt@rcre.com

RESOURCE Commercial Real Estate
9339 Priority Way West Drive
Suite 120
Indianapolis, IN 46240
www.RCRE.com



DEMOGRAPHICS*

Radius	2 Mile	3 Mile	4 Mile
Population	15,900	35,138	69,547
Households	5,850	13,093	25,824
Average HHI	\$99,419	\$101,052	\$108,800
Median Age	37.0	37.4	37.2

*SitesUSA 2016 Estimated

Ross Reller
 Senior Vice President &
 Dir. of Land Services
 Direct 317.663.6552
 Mobile 317.414.1101
ross.reller@rcre.com

Jeff Merritt
 Principal
 Direct 317.663.6537
 Mobile 317.714.5423
jeff.merritt@rcre.com

RESOURCE Commercial Real Estate
 9339 Priority Way West Drive
 Suite 120
 Indianapolis, IN 46240
www.RCRE.com

The information contained herein was obtained from sources we consider reliable. We cannot be responsible for errors, omissions, prior sale or lease, withdrawal from the market or change in price. Seller and broker make no representation as to the environmental condition of the property and recommend the lessee's/purchaser's independent investigation.