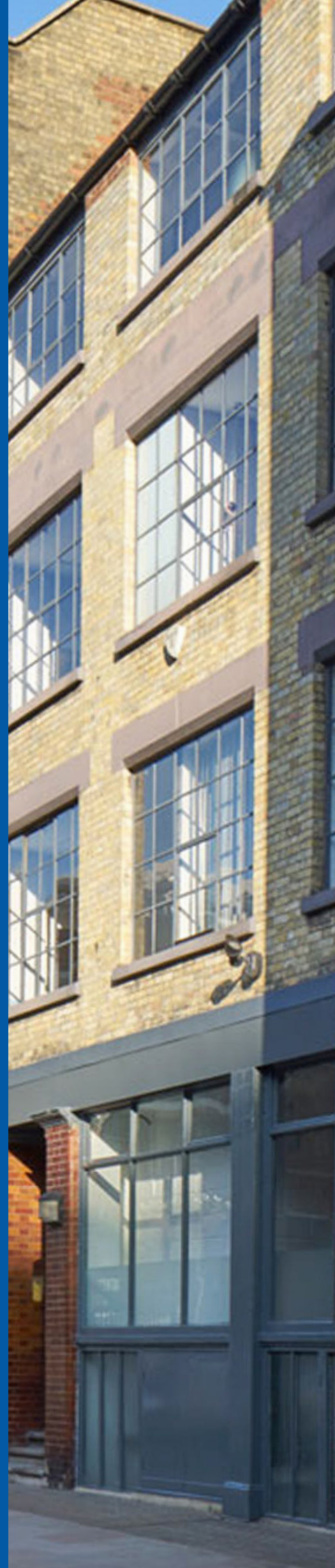


2ND FLOOR — 2,280 SQ FT
IMMEDIATELY AVAILABLE FULLY FITTED

THE EMERSON BUILDING

4-8 EMERSON ST — LONDON SE1 9DU

[▶ TAKE A VIRTUAL TOUR](#)



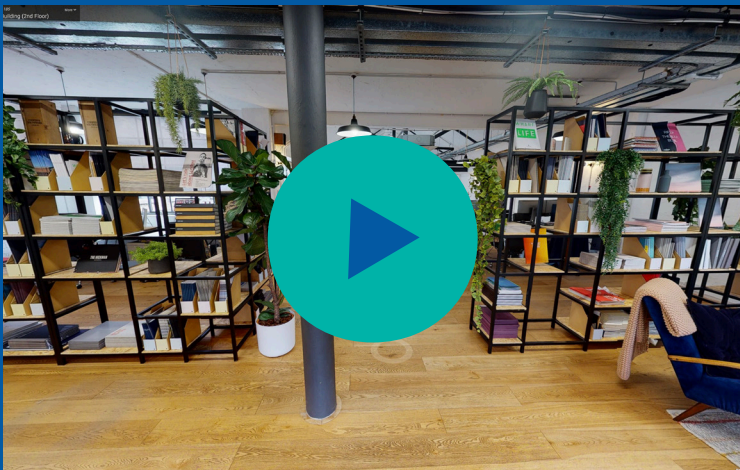
THE EMERSON BUILDING



A beautiful warehouse style building situated in the heart of Bankside, a riverside location just a short walk from London Bridge, London Blackfriars and Southwark stations.



EXPLORE THE 3D SPACE:



FITTED WORKSPACE



FULL SPECIFICATION

- Open plan, loft-style office space
- Fitted space (CONTENTS CAN BE REMOVED)
- Secure access 24/7
- Security system with entry phone
- 2x private meeting rooms
- 2x casual meeting spaces
- Wifi
- Kitchen
- 20 Bike racks
- Shower facilities
- Manned reception desk

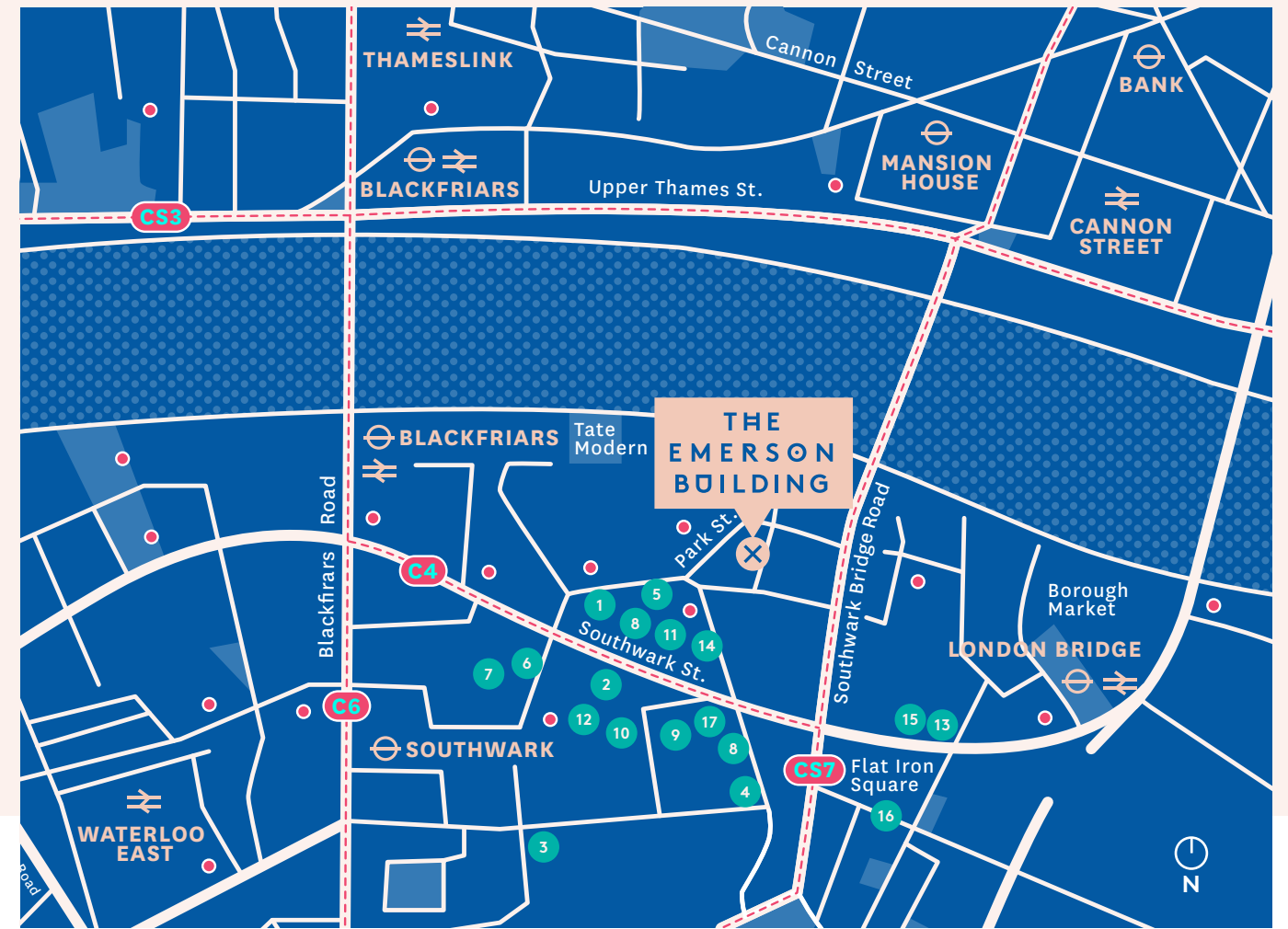




TRAVEL TIMES

🚶	⊖	BLACKFRIARS	🚶	7 MINUTES
🚶	⊖	LONDON BRIDGE	🚶	10 MINUTES
⊖	⊖	SOUTHWARK	🚶	10 MINUTES
🚶	⊖	CANNON STREET	🚶	11 MINUTES
⊖	⊖	MANSION HOUSE	🚶	11 MINUTES
🚶	⊖	WATERLOO	🚶	17 MINUTES

● SANTANDER BIKES - - - - - CYCLE HIGHWAY



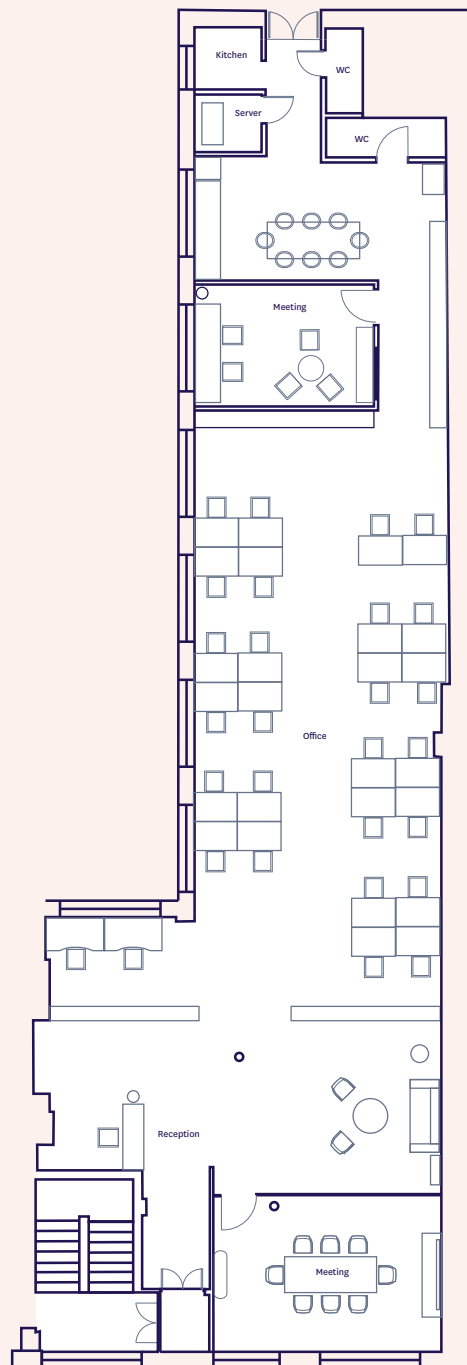
- | | | | | | |
|-----|-----|-----|-----|-----|-----|
| 1. | 2. | 3. | 4. | 5. | 6. |
| 7. | 8. | 9. | 10. | 11. | |
| 12. | 13. | 14. | 15. | 16. | 17. |

Floor Plan

2nd Floor 2,280 sq ft

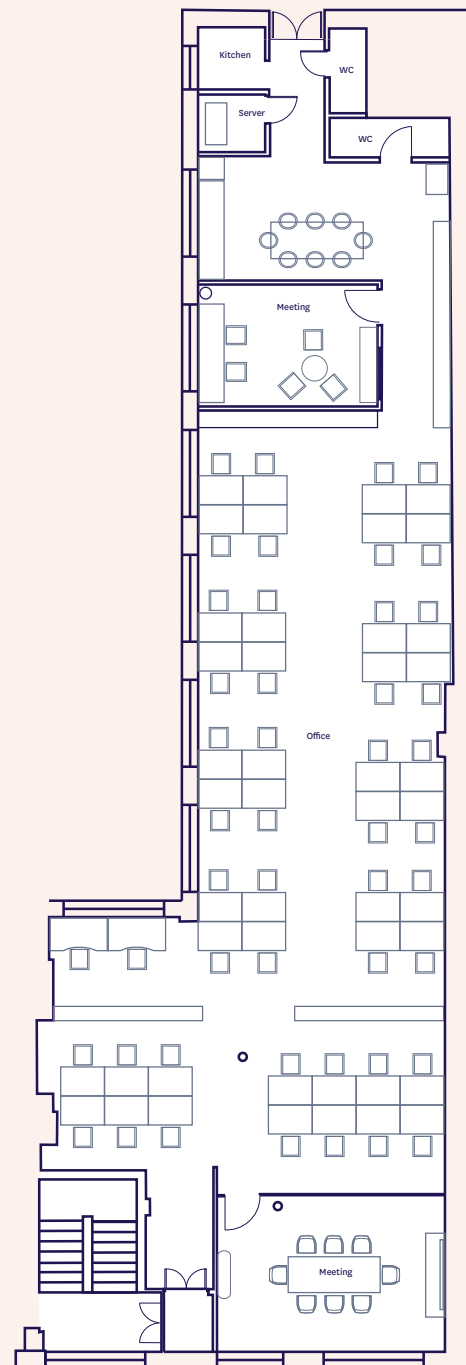
Existing space plan

28 Desks



Potential space plan

48 Desks



NOT TO SCALE. INDICATIVE ONLY



Terms

Available on 1 year license ending June 2021 - £POA.

Contact

Ben Fisher

bf@unionstreetpartners.co.uk

07810 676168

Simon Smith

ss@unionstreetpartners.co.uk

07736 880316



Subject to contract. Union Street Partners for themselves and the vendor of this property give notice that these particulars do not form, or form part of, any offer or contract. They are intended to give fair description of the property and whilst every effort has been made to ensure their accuracy this cannot be guaranteed. Any intending purchaser must therefore satisfy themselves by inspection or otherwise. Neither Union Street Partners, nor any of its employees, has any authority to make or give any further representations or warranty whatsoever in relation to this property. All prices and rents quoted are net of vat. June 2020. Designed by Studio 185. studio185.London

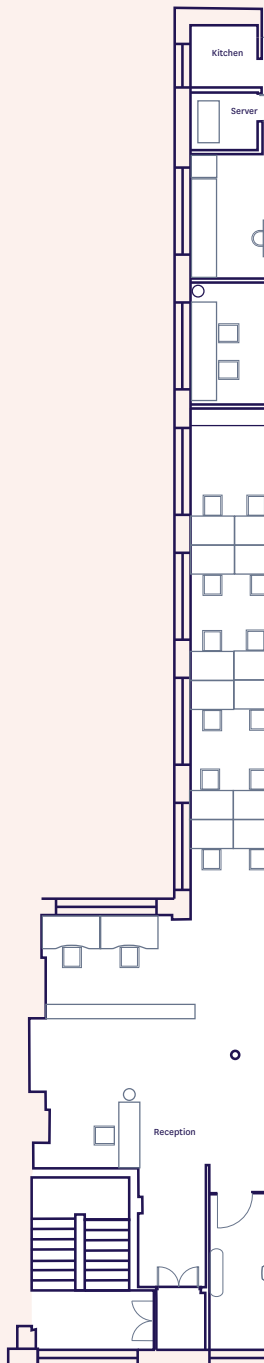


[TAKE A VIRTUAL TOUR](#)

Floor Plan

Existing space plan

28 Desks



THE EMERSON BUILDING

