



2656 E. 29th Avenue
Spokane, Washington 99223

Lease Rate:
\$16.50 PSF Modified Gross

Property Features

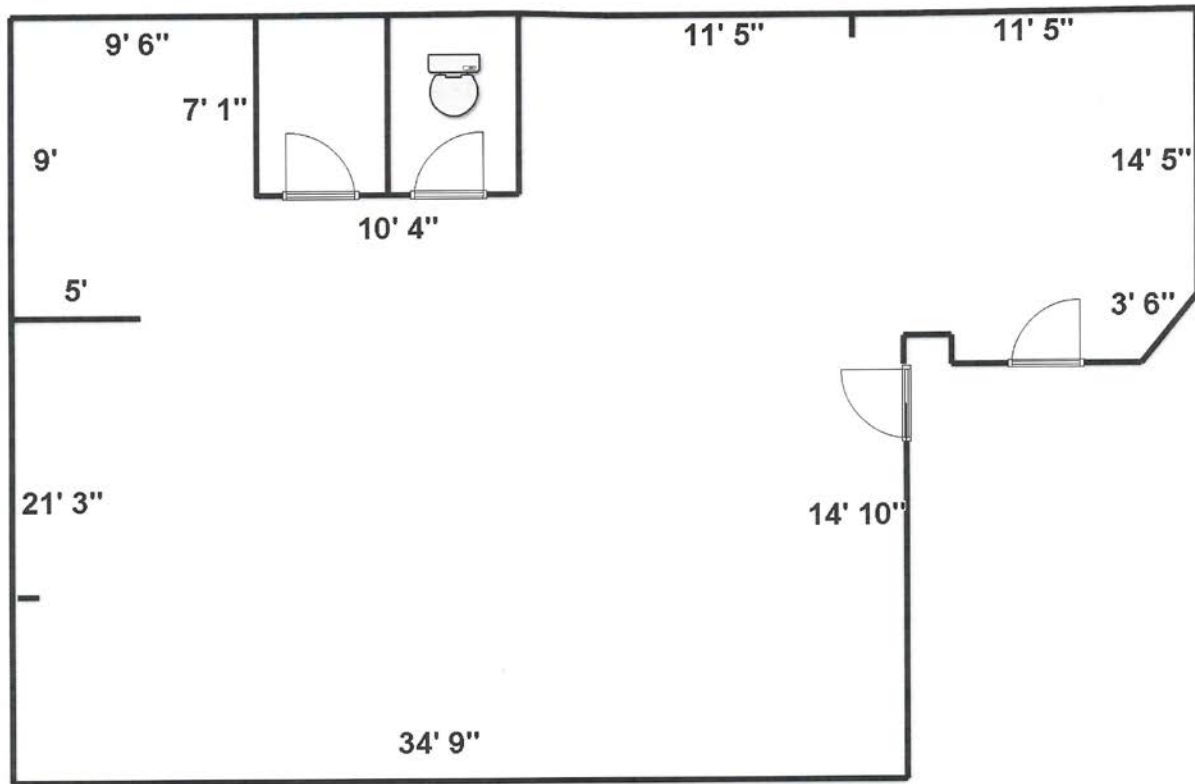
- Space Available: 1,474 SF
- Near Lincoln Heights Shopping Center
- Zoning: CC2-DC
- Excellent Signage, Access and Visibility
- Former Office of H & R Block
- Total Businesses:
 - Within 1 Mile: 506
 - Within 3 Miles: 4,456
 - Within 5 Miles: 19,379
- Year Built: 1976
- Parcel #: 35331.0505
- Owner is a Licensed Broker in Washington State
- Traffic Counts:
 - On 29th Ave: 19,700
 - On Regal St.: 11,200



For More Information, Contact:

James S. Black III, CCIM
+1 509 622 3551
jblack@naiblack.com

2656 E 29th



Not to scale

0ft 12ft 24ft

floor planner

2016 Demographics:

	1 Mile	3 Miles	5 Miles
Population:	13,446	77,746	161,225
Median HHI:	\$50,082	\$52,781	\$42,936
Average HHI:	\$69,385	\$76,939	\$63,655
2021 Projected Population:	13,818	80,050	166,030

For More Information, Contact:

James S. Black III, CCIM
 +1 509 622 3551
 jblack@naiblack.com