

# Hatherton Court

High Quality Self Contained Offices

Hatherton Street, Walsall WS4 2LA

**FOR SALE/TO LET**

1,900 to 7,100 Sq ft

Private Parking

Available Summer 2020



A Jessup Development



Hatherton Court office complex is situated on Hatherton Street just off Littleton Street East, Walsall.

In recent years this area has become a favoured location for development of prestigious commercial architect designed buildings.

These include the Head office of the Walsall Housing Group, the Head office of JHoots Pharmacy and the faculty buildings of Walsall College.

The Hatherton Court office development presents a unique opportunity to locate your company in a quality corporate environment.

Offering a choice of office size with your own front door.

The two office buildings have been designed by award winning architect S.P Faizey and will be available for occupation in the Summer of 2020.

STANDARD FEATURES

- The security gated landscaped site has allocated car parking and car charging points.
- Security features include Monitored CCTV.
- Built to the latest Building Regulations [efficiency etc]
- Photovoltaic panels to each unit
- BT fibre optic service [occupier to apply]
- Suspended ceilings LED lighting
- Carpeted throughout
- Gas heating radiators to each unit
- Low maintenance features

Hatherton Court



HATHERTON STREET

UNIT 1  
Ground Floor 97.92 sq m (1054 sq ft)  
First Floor 105.60 sq m (1136 sq ft)  
Total 203.52 sq m (2190 sq ft)

UNIT 2  
Ground Floor 118.36 sq m (1273 sq ft)  
First Floor 127.24 sq m (1370 sq ft)  
Total 245.60 sq m (2644 sq ft)

UNIT 3  
Ground Floor 100.20 sq m (1078 sq ft)  
First Floor 108.80 sq m (1171 sq ft)  
Total 209.00 sq m (2249 sq ft)

UNIT 4  
Ground Floor 107.90 sq m (1161 sq ft)  
First Floor 113.69 sq m (1223 sq ft)  
Total 221.59 sq m (2384 sq ft)

UNIT 5  
Ground Floor 97.42 sq m (1048 sq ft)  
First Floor 103.36 sq m (1112 sq ft)  
Total 200.78 sq m (2160 sq ft)

UNIT 6  
Ground Floor 85.13 sq m (916 sq ft)  
First Floor 90.93 sq m (978 sq ft)  
Total 176.06 sq m (1894 sq ft)

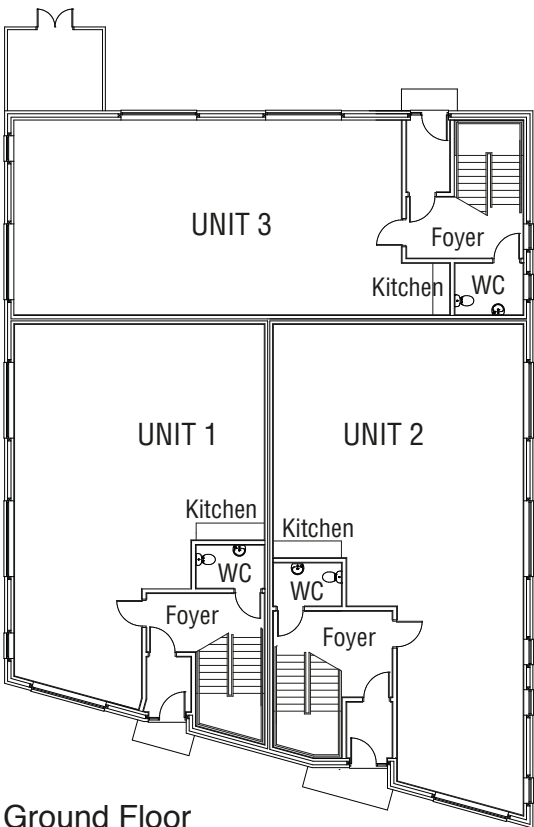
LITTLETON STREET EAST



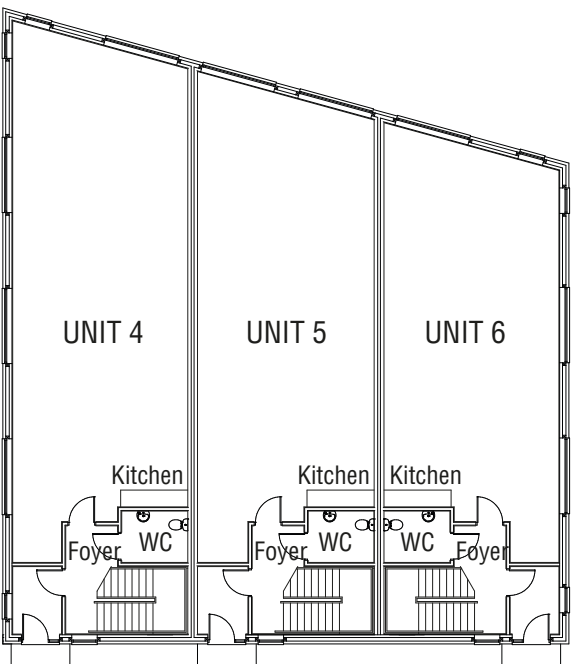
Front Elevation Units 1,2 & 3



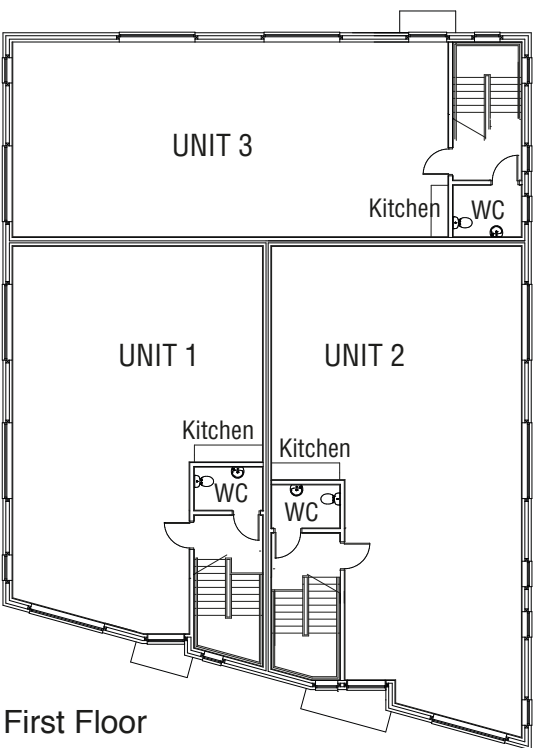
Front Elevation Units 4, 5 & 6



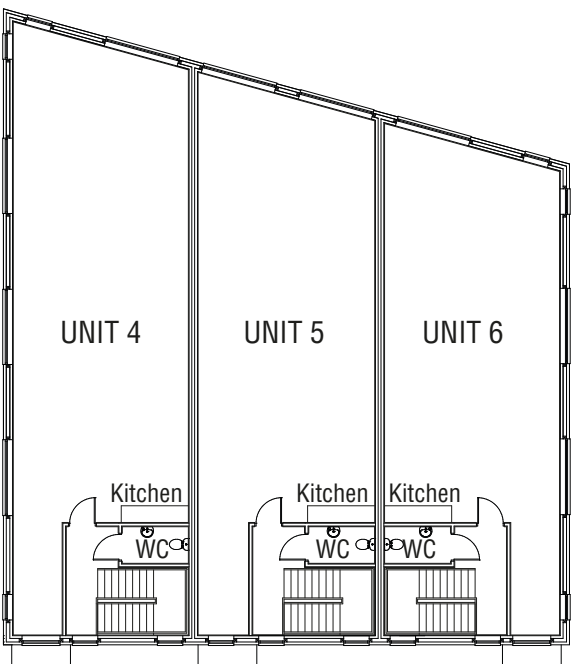
Ground Floor



Ground Floor



First Floor



First Floor

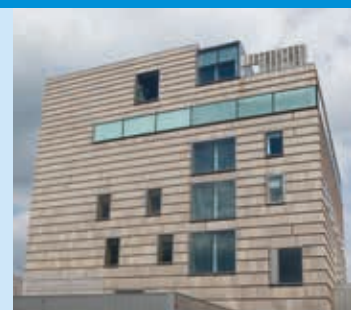




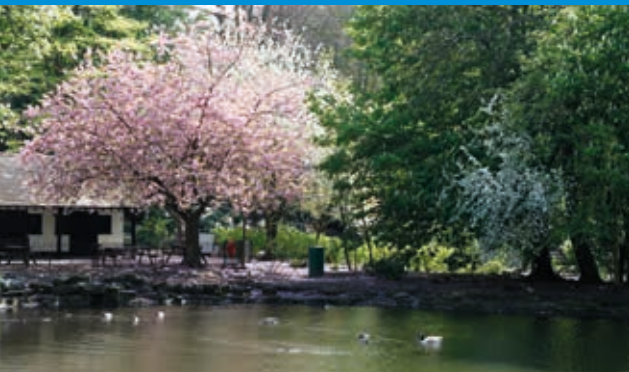
Hatherton Street from Littleton Street junction



Waterfront South canalside regeneration



The New Art Gallery Walsall



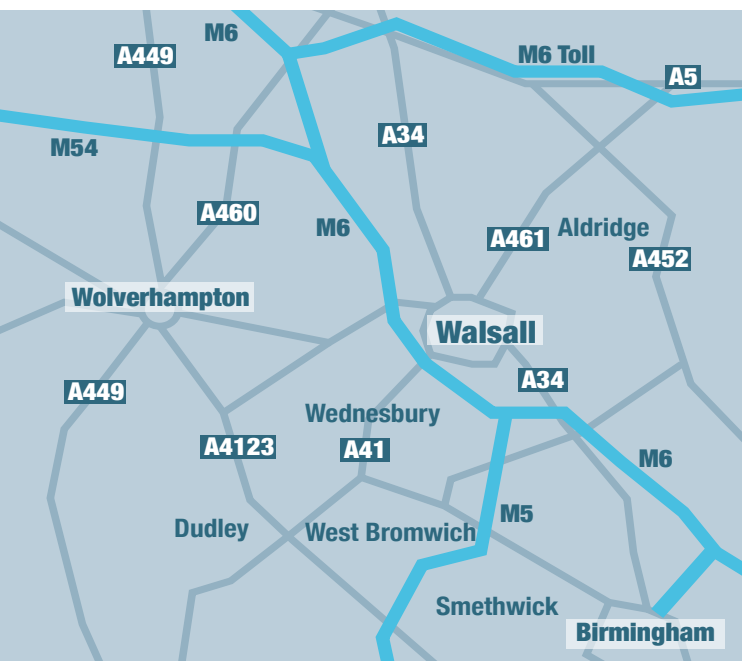
Walsall Arboretum



Walsall Arboretum



Walsall Canal



Hatherton Court, Hatherton Street, Walsall WS4 2LA



Jessup Build Develop, Jessup House, Station Court,  
Girton Road, Cannock, Staffordshire WS11 0EJ  
Tel: 01543 462468 [www.jessupbrothers.co.uk](http://www.jessupbrothers.co.uk)

For further information contact:



The particulars contained in this brochure are intended only as a guide and must not be relied upon as statements of fact. They are not intended to constitute the whole part of any contract. All details are given in good faith and believed to be correct. All liability in negligence or otherwise arising from the misuse of these particulars is hereby excluded.