

37-23

33<sup>RD</sup> STREET

BETWEEN 37<sup>TH</sup> AND 38<sup>TH</sup> AVENUES | LONG ISLAND CITY



37 29

**ksr**  
KASSIN SABBAGH REALTY  
212.417.9217

**RETAIL SPACE  
FOR LEASE**

James Foote  
631.697.9585  
JFoote@ksrny.com

An orange rectangular sign is posted in the window. It features the KSR logo and contact information for James Foote. The sign is partially obscured by a person's arm and hand reaching into the window from the right.

NO OPEN FLAMES  
SMOKING OR BURNING  
PERMITTED HEREIN

# 37-23 33<sup>RD</sup> STREET

BETWEEN 37<sup>TH</sup> AND 38<sup>TH</sup> AVENUES | LONG ISLAND CITY

## PROPERTY HIGHLIGHTS

- Most uses considered
- Space has two restrooms
- White box condition
- At the base of a 43 unit apartment building
- Dense residential area surrounded by colleges

## SIZE

1,300 SF Ground

## FRONTAGE

20'

## CEILING HEIGHT

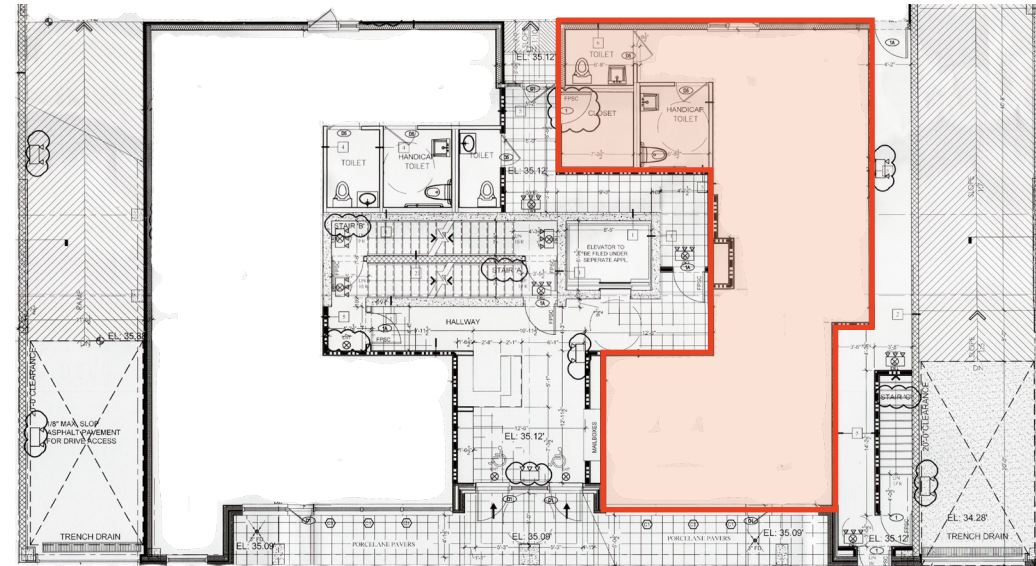
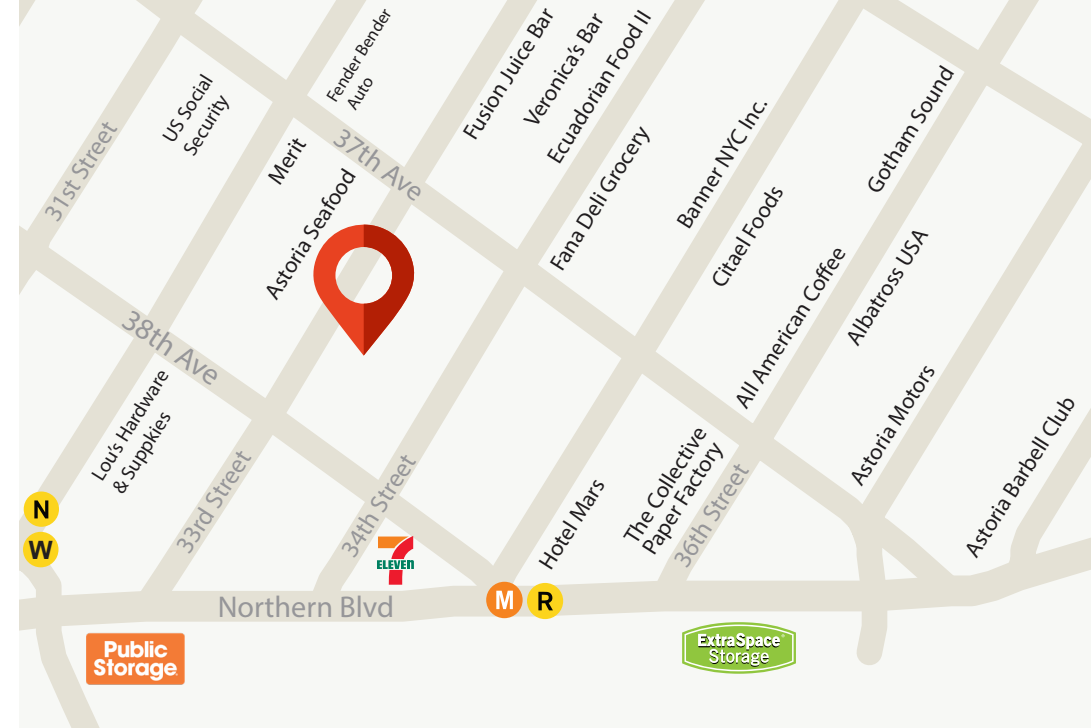
10'

## POSSESSION:

Immediate

## TRANSPORTATION

N W R M



CONTACT OUR BROKERS FOR MORE INFORMATION:

**JEFF GEOGHEGAN**  
Jeffg@ksrny.com

**212.945.8984**

**JAMES FOOTE**  
JFoote@ksrny.com

**631.697.9585**



All information supplied in this marketing presentation and/or flyer is from sources deemed reliable and is furnished subject to errors, omissions, modifications, removal of listings from sale/lease and to any listing condition. Any square footage, dimensions, floor plans and/or technical data set forth are approximations and are subject to further elaboration/confirmation.

# 37-23 33<sup>RD</sup> STREET

BETWEEN 37<sup>TH</sup> AND 38<sup>TH</sup> AVENUES | LONG ISLAND CITY



CONTACT OUR BROKERS FOR MORE INFORMATION:

**JEFF GEOGHEGAN**

Jeffg@ksrny.com

212.945.8984

**JAMES FOOTE**

JFoote@ksrny.com

631.697.9585

All information supplied in this marketing presentation and/or flyer is from sources deemed reliable and is furnished subject to errors, omissions, modifications, removal of listings from sale/lease and to any listing condition. Any square footage, dimensions, floor plans and/or technical data set forth are approximations and are subject to further elaboration/confirmation.

**ksr**  
KASSIN SABBAGH REALTY