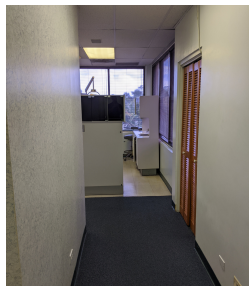




FOR LEASE - 688 SF  
**\$1.40/sf/mo**  
Base Rent

**Alexander C Yen**  
RS-81293  
808.392.6475  
alexandery@marcushawaii.com



## ABOUT

Suite 207 is a second floor corner-unit office space in Kaneohe, currently built out as a dentist's office, but available for other uses as well. This clean and well-maintained unit has a spacious reception area, an exam room with space for 3 patient stations, a break room/lab area, and a large hallway walk-in closet that can be a small private office. Large windows on two walls provide Suite 207 with plenty of natural light and great views. Building has a newly upgraded elevator as well as ample parking.



## FACTS & FEES:

- TMK: 1-4-5-17-7
- Zoning: B-2
- Size: 688 square feet
- Base Rent: \$1.40/sf/mo
- CAM: \$1.65/sf/mo (2021)
- Term: Negotiable