

FOR LEASE



22 NW 23RD PLACE

22 NW 23RD PLACE
PORTLAND, OREGON 97210

AVAILABLE

Suite 203
3,627 RSF

RATE

\$25.00 NNN (\$9.57 NNNs,
janitorial not included)

BUILDING HIGHLIGHTS

- Wood floors, exposed beams, high ceilings
- Multiple offices and conference rooms
- Mezzanine with private office, conference room
- Kitchenette
- Secured building parking

NICK EHLEN

503.546.4512
nehlen@melvinmark.com

PAUL ANDREWS

503.546.4542
pandrews@melvinmark.com

ABOUT 22 NW 23RD PLACE

22 NW 23RD PL. | PORTLAND, OR 97210



LOCATION

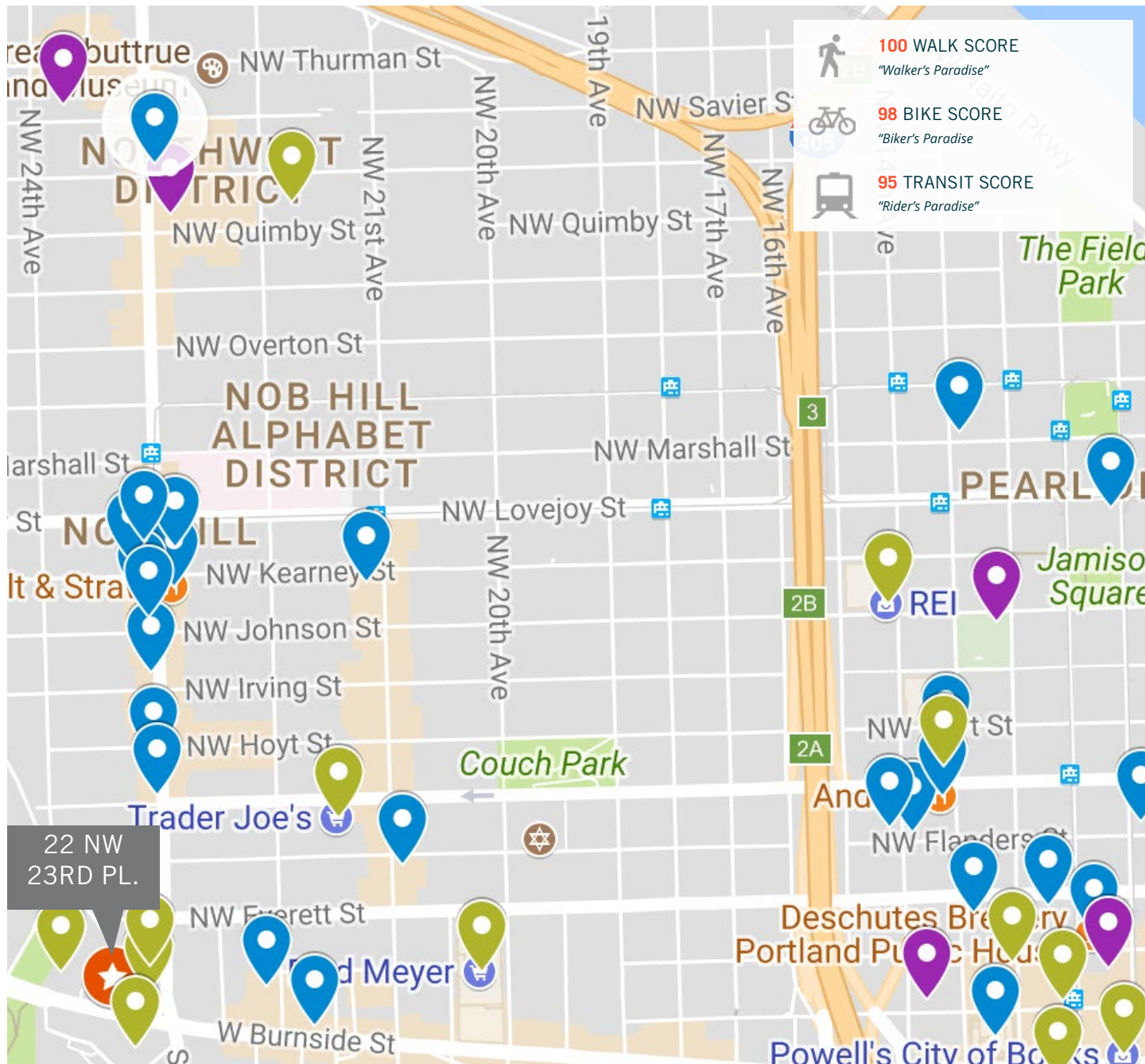
Conveniently located at NW 23rd and Burnside, the office is easily accessible via Route 26 and I-5/405 and the heart of downtown.

NEIGHBORHOOD

With countless shops, restaurants and retail service centers, the office space is surrounded by ample amenities at the head of the Nob Hill District. Merchants within the immediate vicinity include Zupan's, Elephants Delicatessen, Uptown Shopping Center and TWIST Portland.

ABOUT 22 NW 23RD PLACE

22 NW 23RD PL. | PORTLAND, OR 97210



SERVICES / ATTRACTIONS

- Amtrak
- US Post Office
- Pacific Northwest College of Art
- Portland Center Stage
- Pearl Medspa
- Regional Arts & Culture Council
- 24 Hour Fitness
- Multnomah Athletic Club
- Providence Park

RETAIL

- Levi's
- Urban Outfitters
- TWIST
- Uptown Shopping Center
- Fred Meyer
- Trader Joe's
- REI
- Powell's Books
- Anthropologie
- Patagonia
- Keen Garage
- New Season's

RESTAURANTS / COFFEE

- Zupan's Markets
- Elephants Delicatessen
- 23Hoyt
- Lovejoy Bakers
- Salt & Straw
- Ken's Artisan Bakery
- Papa Haydn
- Ringside Steakhouse
- Boxer Ramen
- Blue Star Donuts
- Little Big Burger
- The Fireside
- Pizzacato
- Oven and Shaker
- Whole Foods Market
- Deschutes Brewery Portland Public House
- Rogue Distillery and Public House
- 10 Barrel Brewing
- Blue Hour
- Sister's Coffee
- Barista
- Andina
- Irving St. Kitchen

22 NW 23RD PLACE

FLOOR PLAN

AVAILABLE

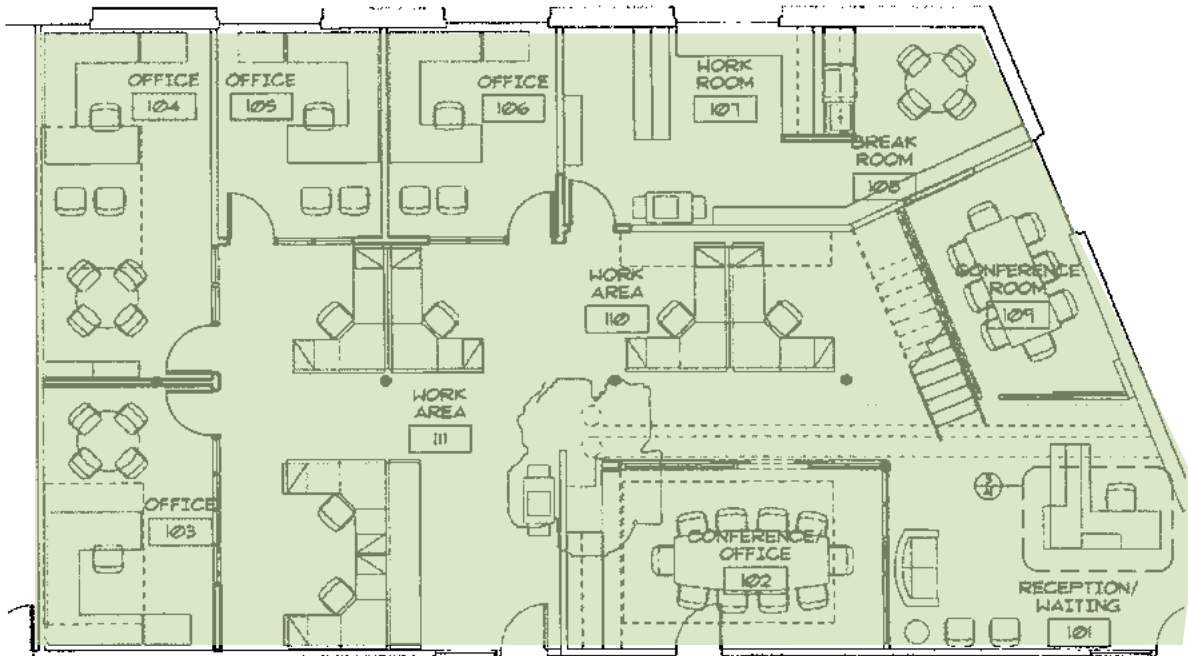
Suite 203: 3,627 RSF

September 1st, 2018

RATES

\$25.00 NNN

(\$9.57 NNNs, janitorial not included)



Suite 203 3,627 RSF

- Exposed beams, high ceilings, skylights
- Multiple offices and conference rooms

FOR LEASE 22 NW 23RD PLACE

22 NW 23RD PLACE

PORTLAND, OREGON 97210

NICK EHLEN

503.546.4512

nehlen@melvinmark.com

PAUL ANDREWS

503.546.4542

pmandrews@melvinmark.com