

Rent Roll for 1501 Firestone Blvd and 8520 Compton Ave

1501-1505 Firestone	\$1,544	Taco Stand
1507 Firestone	\$ 350	barber Shop
1509 Firestone	\$ 500	Residential
1511-1513 Firestone	\$1,200	Furniture store
8520 Compton	\$ 350	Single
8520 1/2 Compton	\$ 350	single
8520 3/4 Compton	\$ 950	Two Bedroom
8522 Compton	\$ 650	One Bedroom
8522 1/2 Compton	\$ 700	One Bedroom
8522 1/4 Compton	\$ 675	One Bedroom
8522 3/4 Compton	\$ 725	One Bedroom
8526 Compton	\$ 540	One Bedroom
8526 1/2 Compton	\$ 750	One Bedroom
8528 Compton	\$ 780	Two Bedroom

Total Monthly Gross Income \$10,064

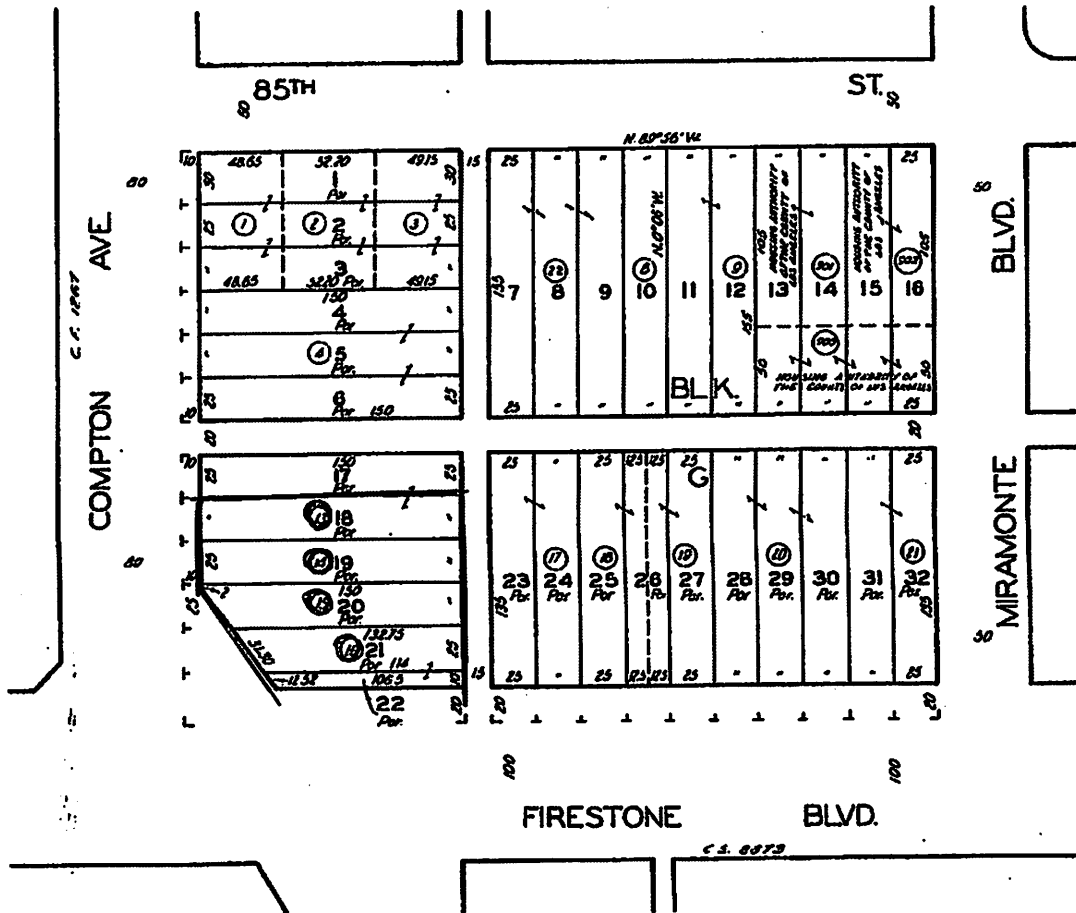
7-65 7-3-64
 7-13-65 76,012,250
 050202792

6028 | 34
 SCALE 1" = 60'



CODE
 1198

FOR PREV. ASSM'T. SEE: 42-22



NADEAU HOMESTEAD TRACT
 MB. 5-143

ASSESSOR'S MAP
 COUNTY OF LOS ANGELES, CALIF.