

FOR LEASE > OFFICE SPACE

# Alpine Office

345 SOUTH MAIN STREET ALPINE, UT 84004



## Property Information

- > Approximately 3,000 SF Available
- > Nice break room
- > Large conference room
- > Professional finishes
- > Perimeter offices
- > Interior open area
- > **Lease rate: \$13.25/SF NNN**

## Virtual Tour

Click or Scan

DEMOGRAPHICS	1 MILE	3 MILE	5 MILE
Population			
2020 Estimated	7,185	38,305	101,551
2025 Projected	7,734	41,701	111,246
Households			
2020 Estimated	1,794	9,208	25,122
2025 Projected	1,935	10,031	27,523
Income			
2020 Median HHI	\$119,171	\$125,162	\$111,337
2020 Average HHI	\$152,697	\$160,483	\$139,135
2020 Per Capita	\$38,300	\$38,666	\$34,379

*Information provided by ESRI Business Analyst*

**Spencer Croshaw**  
+1 801 702 4689  
spencer.croshaw@colliers.com

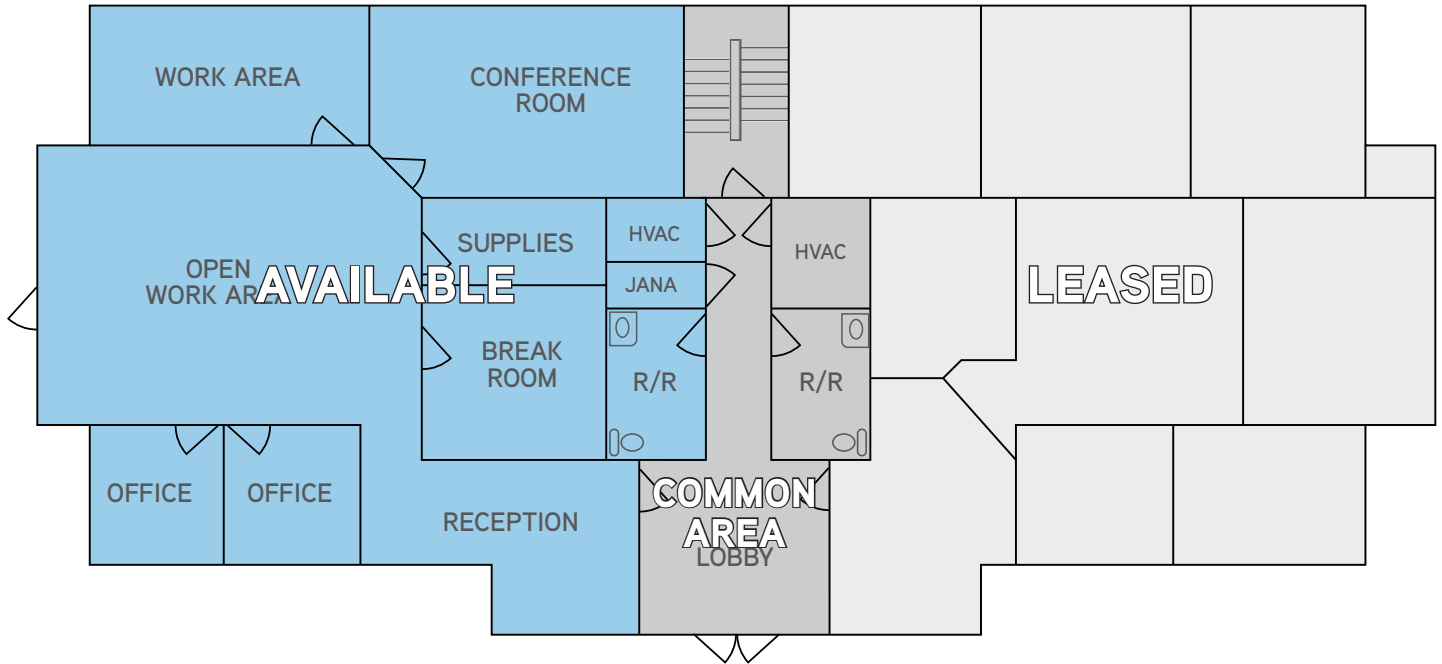
*Colliers International*  
2100 Pleasant Grove Blvd. | Suite 200  
Pleasant Grove, UT 84062  
P: +1 801 610 1300

FOR LEASE > OFFICE SPACE

# Alpine Office

345 SOUTH MAIN STREET ALPINE, UT 84004

## Floor Plan



This document has been prepared by Colliers International for advertising and general information only. Colliers International makes no guarantees, representations or warranties of any kind, expressed or implied, regarding the information including, but not limited to, warranties of content, accuracy and reliability. Any interested party should undertake their own inquiries as to the accuracy of the information. Colliers International excludes unequivocally all inferred or implied terms, conditions and warranties arising out of this document and excludes all liability for loss and damages arising there from. This publication is the copyrighted property of Colliers International and/or its licensor(s). ©2021. All rights reserved.

**Colliers International**  
2100 Pleasant Grove Blvd. | Suite 200  
Pleasant Grove, UT 84062  
P: +1 801 610 1300



Accelerating success.