



## 304 S Laura | Wichita, KS 67211

### Property Overview

- 1,080 SF freestanding office building
- Functional layout
- Ample parking and access
- Perfect opportunity for an office user looking for an affordable option
- Site Size: 7,955 SF
- Zoning: Limited Industrial
- Lease Rate: \$1,100/month modified gross



### Location Details

- Centrally located in the Douglas Design District
- Near Old Town and restaurants along Douglas

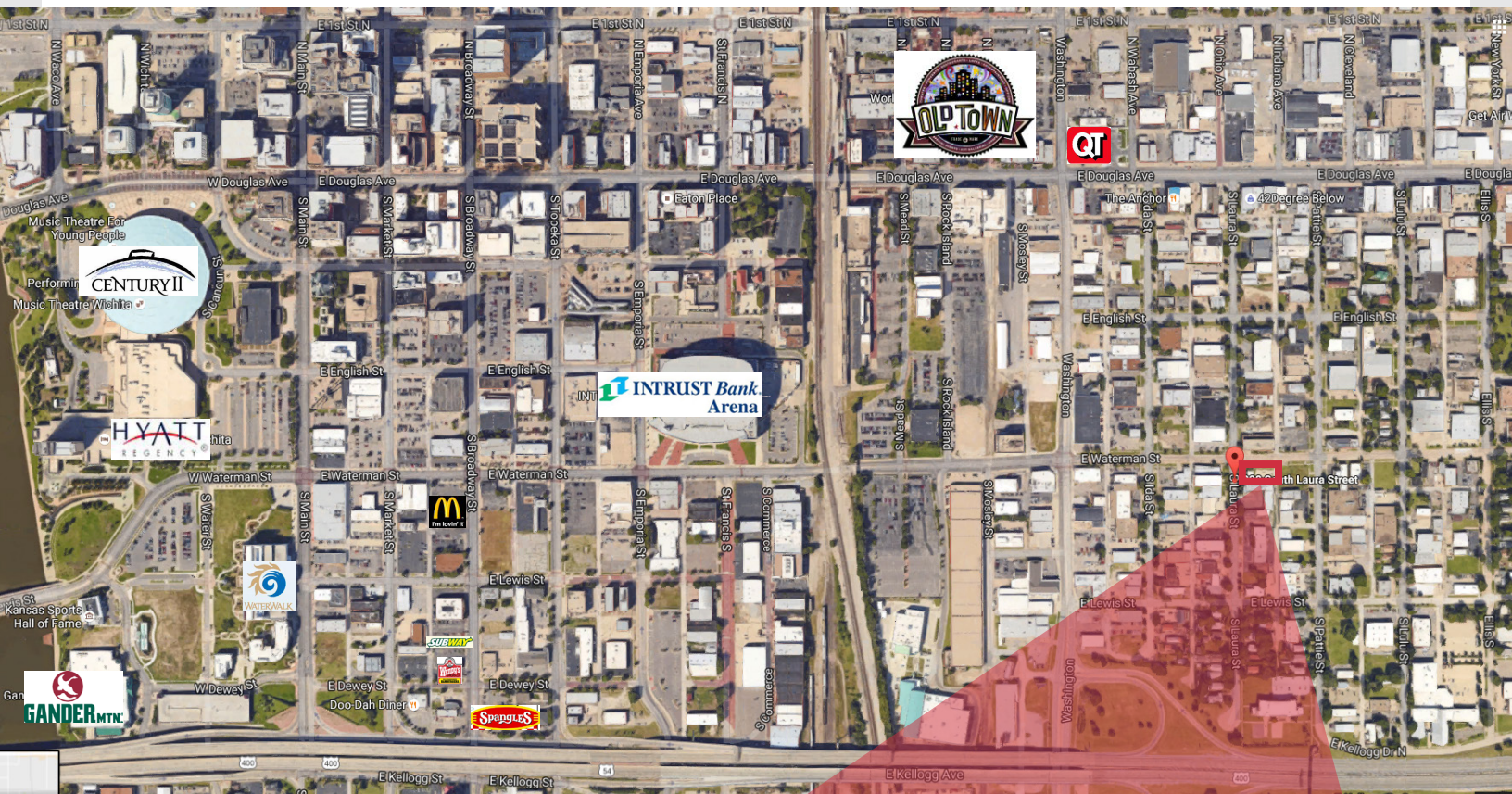
### For more information:

**Nathan Farha, CCIM**  
(316) 262-0000  
NFarha@NAImartens.com

**Jeff Englert**  
(316) 262-0000  
JEnglert@NAImartens.com

For Lease  
Freestanding  
Office Space  
Wichita, Kansas

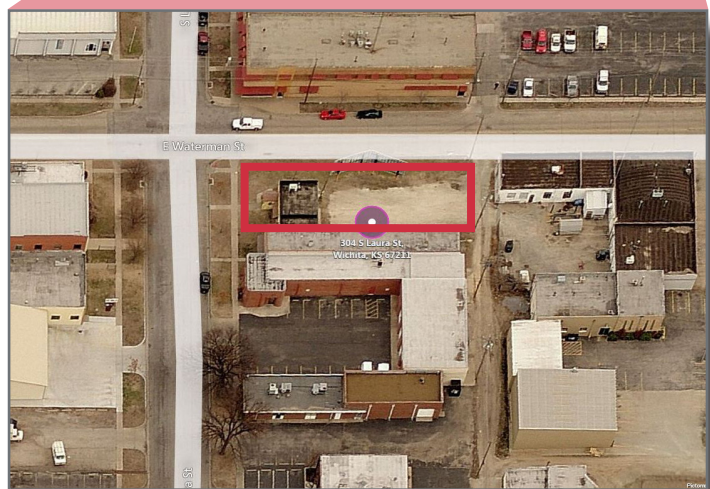
# NAI Martens



For more information:

**Nathan Farha**  
(316) 262-0000  
NFarha@NAImartens.com

**Jeff Englert**  
(316) 262-0000  
JEnglert@NAImartens.com



NAI Martens  
435 South Broadway  
Wichita, KS 67202  
316.262.0000

The information contained herein was obtained from sources believed reliable; however, NAI Martens makes no guarantees, warranties or representations as to the completeness or accuracy thereof. The presentation of this property is submitted subject to errors, omissions, change of price or conditions prior to sale, or withdrawal without notice.