

① SECOND FLOOR PLAN - SINGLE TENANT OPTION  
1/16" = 1'-0"

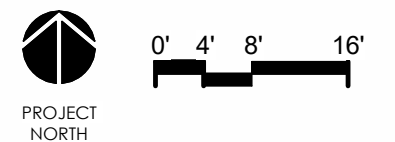
**SCHEDULE - SINGLE TENANT**

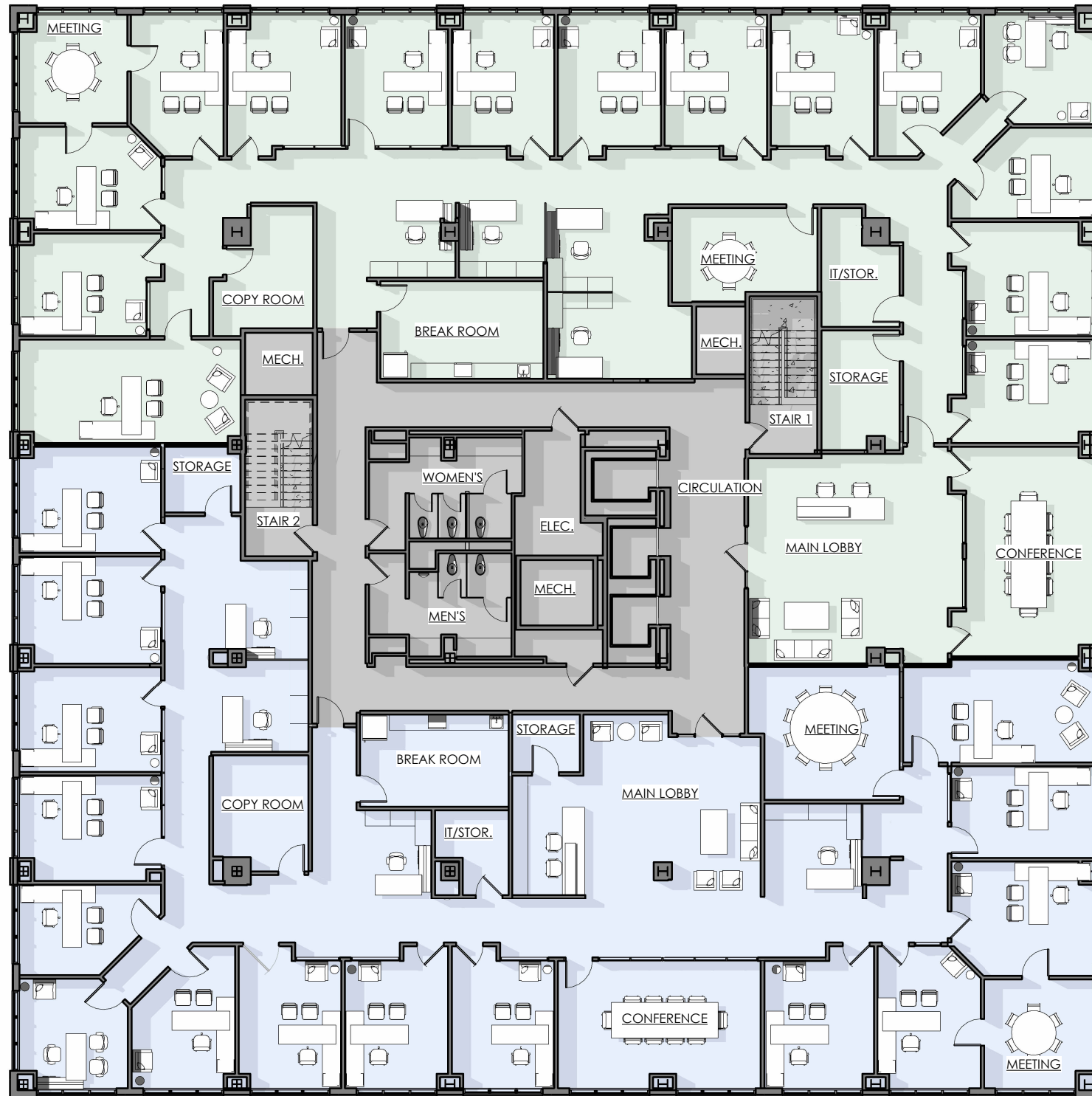
**SINGLE TENANT**

PROGRAM	NUMBER
• LOBBY/WAITING	1
• ENCLOSED OFFICES	30
• CONFERENCE	2
• OPEN/ CLOSED WORKSTATIONS	12
• MEETING ROOMS	3
• STORAGE	3
• IT/STORAGE	2
• COPY ROOM	1
• BREAK ROOM/ LOUNGE	2
• TELEPHONE	1

**CORE + COMMON CIRCULATION**

PROGRAM	NUMBER
• ELEC.	1
• MECH.	3
• STAIR 1	1
• STAIR 2	1
• WOMEN'S RR	1
• MEN'S RR	1





**SCHEDULE - 2 TENANTS**

**TENANT - 1**

PROGRAM	NUMBER
• LOBBY/WAITING	1
• ENCLOSED OFFICES	15
• CONFERENCE	1
• MEETING	2
• OPEN/ CLOSED WORKSTATIONS	4
• STORAGE	1
• IT/STORAGE	1
• COPY ROOM	1
• BREAK ROOM	1

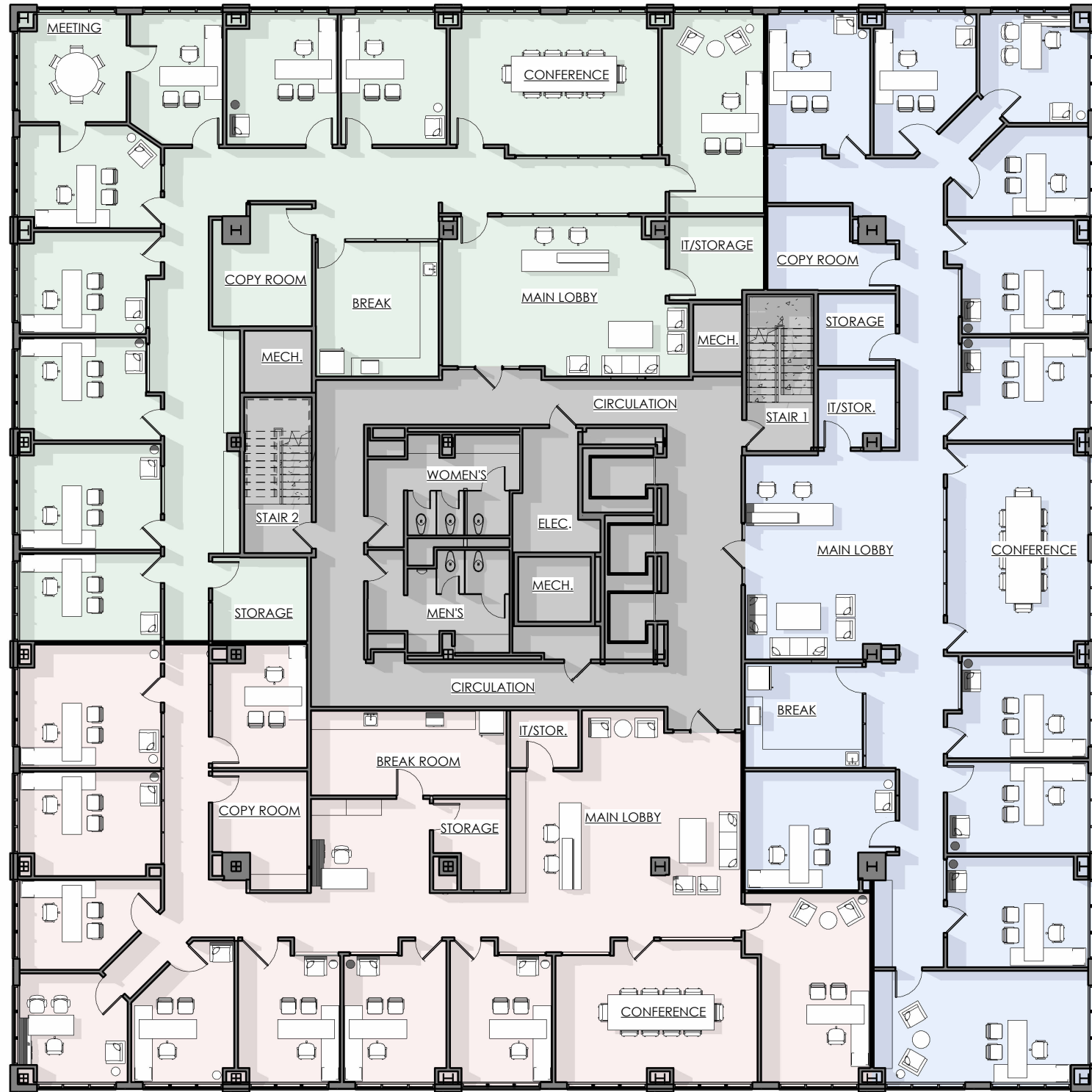
**TENANT - 2**

PROGRAM	NUMBER
• LOBBY/WAITING	1
• ENCLOSED OFFICES	15
• CONFERENCE	1
• MEETING	2
• OPEN/ CLOSED WORKSTATIONS	4
• STORAGE	2
• IT/STORAGE	1
• COPY ROOM	1
• BREAK ROOM	1

**CORE + COMMON CIRCULATION**

PROGRAM	NUMBER
• ELEC.	1
• MECH.	3
• STAIR 1	1
• STAIR 2	1
• WOMEN'S RR	1
• MEN'S RR	1
• CIRCULATION	1

① SECOND FLOOR PLAN - 2 TENANTS OPTION  
1/16" = 1'-0"



1 SECOND FLOOR PLAN - 3 TENANTS OPTION  
1/16" = 1'-0"

**SCHEDULE - 3 TENANTS**

TENANT - 1

PROGRAM	NUMBER
• LOBBY/WAITING	1
• ENCLOSED OFFICES	9
• CONFERENCE	1
• MEETING	1
• STORAGE	1
• IT/STORAGE	1
• COPY ROOM	1
• BREAK ROOM	1

TENANT - 2

PROGRAM	NUMBER
• LOBBY/WAITING	1
• ENCLOSED OFFICES	8
• CONFERENCE	1
• OPEN WORKSTATIONS	8
• STORAGE	1
• IT/STORAGE	1
• COPY ROOM	1
• BREAK ROOM	1

TENANT - 3

PROGRAM	NUMBER
• LOBBY/WAITING	1
• ENCLOSED OFFICES	10
• CONFERENCE	1
• OPEN WORKSTATIONS	1
• STORAGE	1
• IT/STORAGE	1
• COPY ROOM	1
• BREAK ROOM	1

CORE + COMMON CIRCULATION

PROGRAM	NUMBER
• ELEC.	1
• MECH.	3
• STAIR 1	1
• STAIR 2	1
• WOMEN'S RR	1
• MEN'S RR	1
• CIRCULATION	1

**SCHEDULE - SINGLE TENANT**

SINGLE TENANT	
PROGRAM	NUMBER
• LOBBY/WAITING	1
• ENCLOSED OFFICES	30
• CONFERENCE	2
• OPEN/ CLOSED WORKSTATIONS	12
• MEETING ROOMS	3
• STORAGE	3
• IT/STORAGE	2
• COPY ROOM	1
• BREAK ROOM/ LOUNGE	2
• TELEPHONE	1
<b>TOTAL AREA - SINGLE TENANT</b>	<b>13436 USF</b>

CORE + COMMON CIRCULATION	
PROGRAM	NUMBER
• ELEC.	1
• MECH.	3
• STAIR 1	1
• STAIR 2	1
• WOMEN'S RR	1
• MEN'S RR	1
<b>TOTAL AREA - CORE- COMMON</b>	<b>1363 SF</b>

**SCHEDULE - 2 TENANTS**

TENANT - 1	
PROGRAM	NUMBER
• LOBBY/WAITING	1
• ENCLOSED OFFICES	15
• CONFERENCE	1
• MEETING	2
• OPEN/ CLOSED WORKSTATIONS	4
• STORAGE	1
• IT/STORAGE	1
• COPY ROOM	1
• BREAK ROOM	1
<b>TOTAL AREA - TENANT 1</b>	<b>6175 USF</b>

TENANT - 2	
PROGRAM	NUMBER
• LOBBY/WAITING	1
• ENCLOSED OFFICES	15
• CONFERENCE	1
• MEETING	2
• OPEN/ CLOSED WORKSTATIONS	4
• STORAGE	2
• IT/STORAGE	1
• COPY ROOM	1
• BREAK ROOM	1
<b>TOTAL AREA - TENANT 2</b>	<b>6263 USF</b>

CORE + COMMON CIRCULATION	
PROGRAM	NUMBER
• ELEC.	1
• MECH.	3
• STAIR 1	1
• STAIR 2	1
• WOMEN'S RR	1
• MEN'S RR	1
• CIRCULATION	1
<b>TOTAL AREA - CORE + COMMON</b>	<b>2339 SF</b>

**SCHEDULE - 3 TENANTS**

TENANT - 1	
PROGRAM	NUMBER
• LOBBY/WAITING	1
• ENCLOSED OFFICES	9
• CONFERENCE	1
• MEETING	1
• STORAGE	1
• IT/STORAGE	1
• COPY ROOM	1
• BREAK ROOM	1
<b>TOTAL AREA - TENANT 1</b>	<b>4208 USF</b>

TENANT - 2	
PROGRAM	NUMBER
• LOBBY/WAITING	1
• ENCLOSED OFFICES	8
• CONFERENCE	1
• OPEN WORKSTATIONS	8
• STORAGE	1
• IT/STORAGE	1
• COPY ROOM	1
• BREAK ROOM	1
<b>TOTAL AREA - TENANT 2</b>	<b>4230 USF</b>

TENANT - 3	
PROGRAM	NUMBER
• LOBBY/WAITING	1
• ENCLOSED OFFICES	10
• CONFERENCE	1
• OPEN WORKSTATIONS	1
• STORAGE	1
• IT/STORAGE	1
• COPY ROOM	1
• BREAK ROOM	1
<b>TOTAL AREA - TENANT 3</b>	<b>4038 USF</b>

CORE + COMMON CIRCULATION	
PROGRAM	NUMBER
• ELEC.	1
• MECH.	3
• STAIR 1	1
• STAIR 2	1
• WOMEN'S RR	1
• MEN'S RR	1
• CIRCULATION	1
<b>TOTAL AREA - CORE + COMMON</b>	<b>2328 SF</b>

**THE LIBERTY BUILDING**

\*NOTE: ALL THE TENANT AREAS ARE APPROXIMATE FOR PLANNING PURPOSES AND WILL NEED TO BE VERIFIED FOR TENANT LEASING.