

24500 FORTERRA DRIVE
WARREN, MICHIGAN

INDUSTRIAL FOR LEASE
6,000-10,500 Square Feet Available



**SIGNATURE
ASSOCIATES**
KNOW SIGNATURE | KNOW RESULTS

FORTERRA INDUSTRIAL PARK



PROPERTY FEATURES

- 6,000-10,500 square feet available
- Office square feet to-suit
- 22,420 square foot building
- 14' clear height
- (1) 12x12 grade level door
- Duplex with (1) shared truckwell
- Zoned M-2
- 600 amps, 240 volts
- Well-maintained park and facility
- Lease rate: \$5.75/sf MG



For more information, please contact:

PAUL SAAD
(248) 359 0652
psaad@signatureassociates.com

BEN WILKIEMEYER
(248) 359 0624
bwilkiemeyer@signatureassociates.com

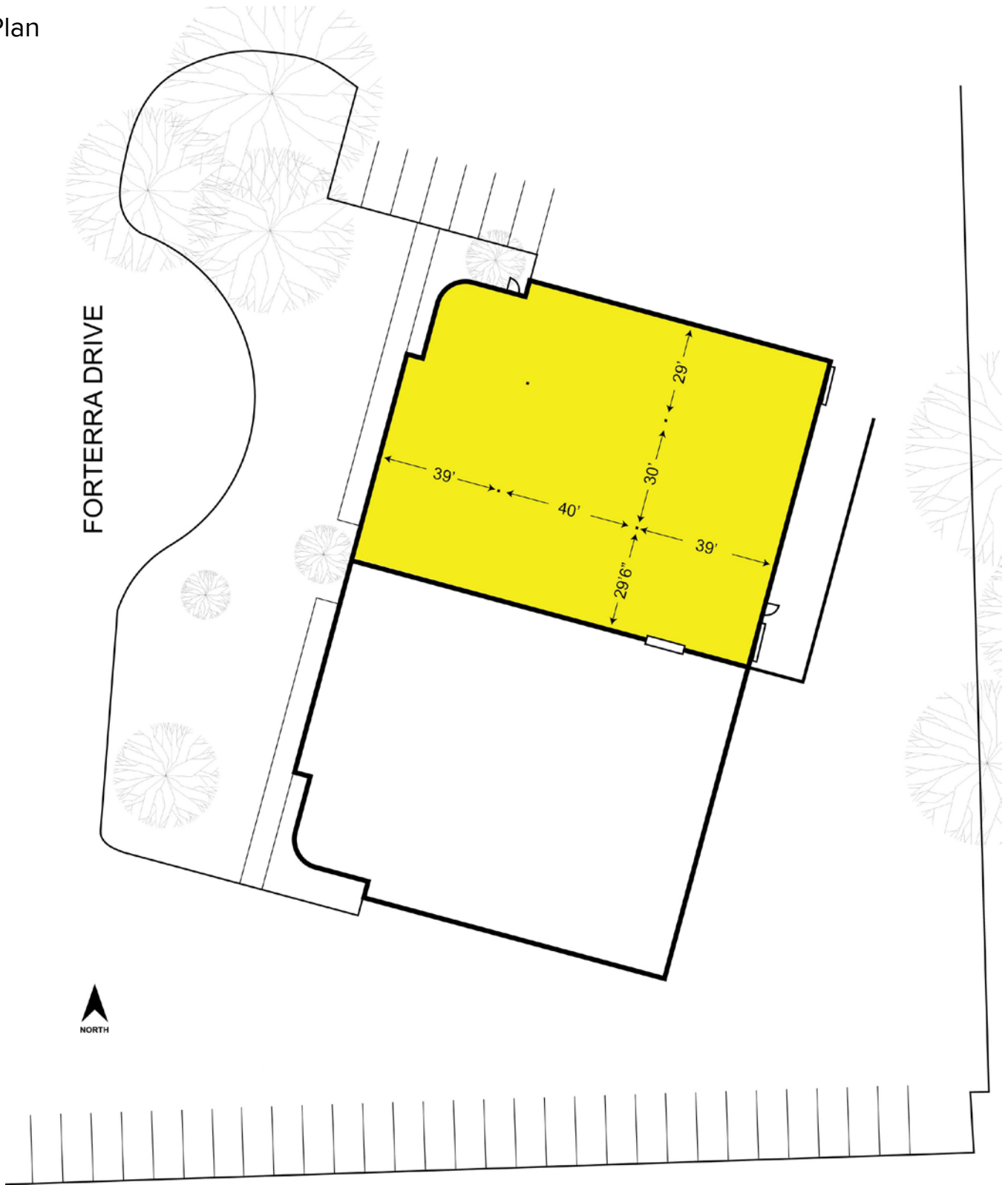
SIGNATURE ASSOCIATES
One Towne Square, Suite 1200
Southfield, MI 48076
www.signatureassociates.com

24500 Forterra Drive - Warren, Michigan

Industrial For Lease

6,000-10,500
Square Feet
AVAILABLE

Site Plan



For more information, please contact:

PAUL SAAD
(248) 359 0652
psaad@signatureassociates.com

BEN WILKIEMEYER
(248) 359 0624
bwilkiemeyer@signatureassociates.com

SIGNATURE ASSOCIATES
One Towne Square, Suite 1200
Southfield, MI 48076
www.signatureassociates.com