



PROPERTY HIGHLIGHTS

- 90 market rate apartments coming Fall 2017
- Up to 200,000 SF of office and retail space available 2018
- Revitalized green space & bike share
- Shared amenities: courtyard, picnic area, ample commercial parking and conference center
- Fitness and wellness facility contemplated

TRADE AREA DEMOGRAPHICS

	POPULATION	AVG. HH INCOME	DAYTIME EMPLOYEES
1 Mile	7,592	\$22,825	17,528
3 Miles	69,746	\$42,245	46,343
5 Miles	127,981	\$52,209	71,134
7 Minute	115,654	\$50,214	65,427

QUICK LINKS *(click to view)*

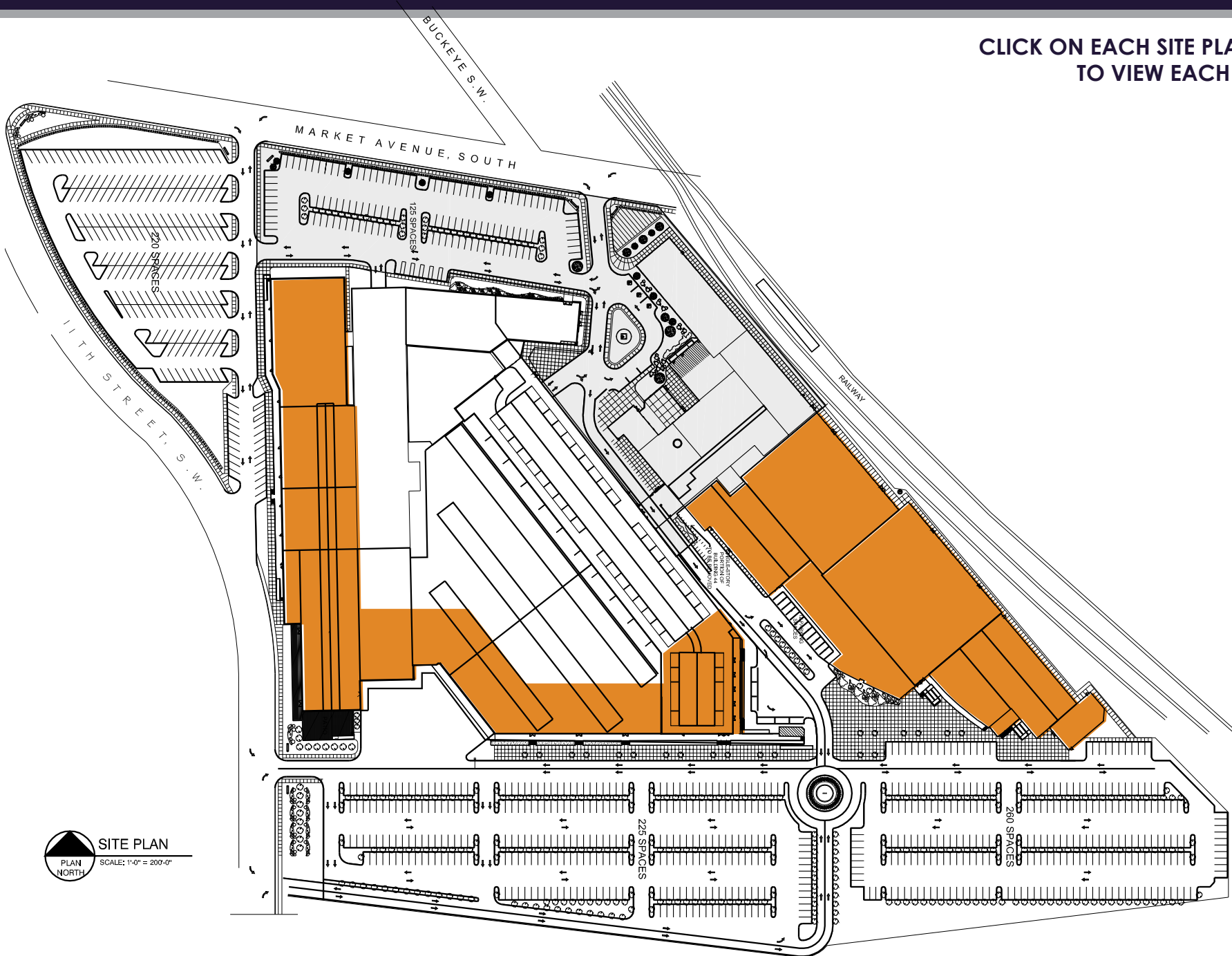
3401 Richmond Rd., Suite 200
Beachwood, OH 44122

www.passovgroup.com

FOR MORE INFORMATION, CONTACT: 216.831.8100

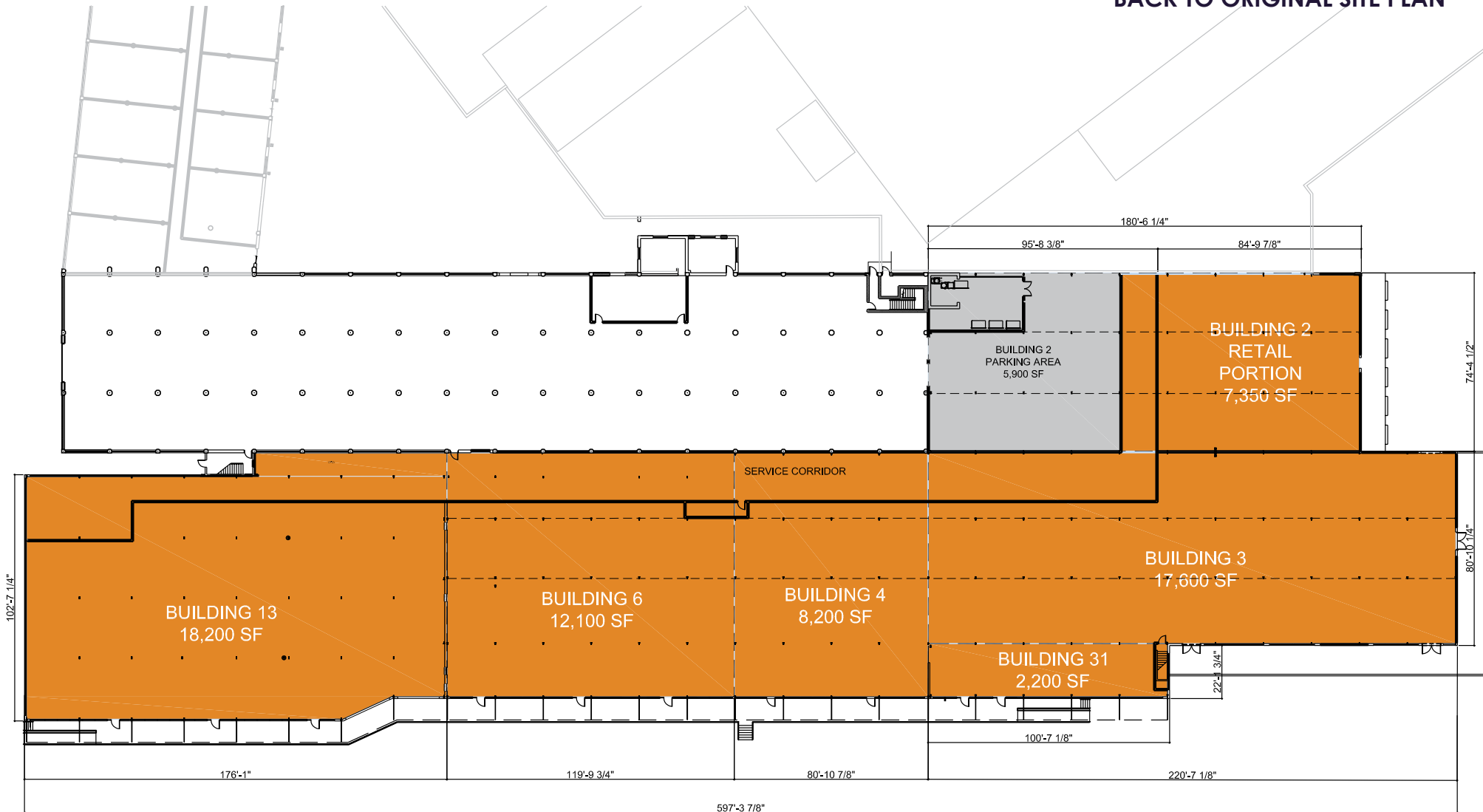
Catherine Lueckel / clueckel@passovgroup.com • **Allison Gjomuso** / agjomuso@passovgroup.com

CLICK ON EACH SITE PLAN BUBBLE
TO VIEW EACH SITE PLAN

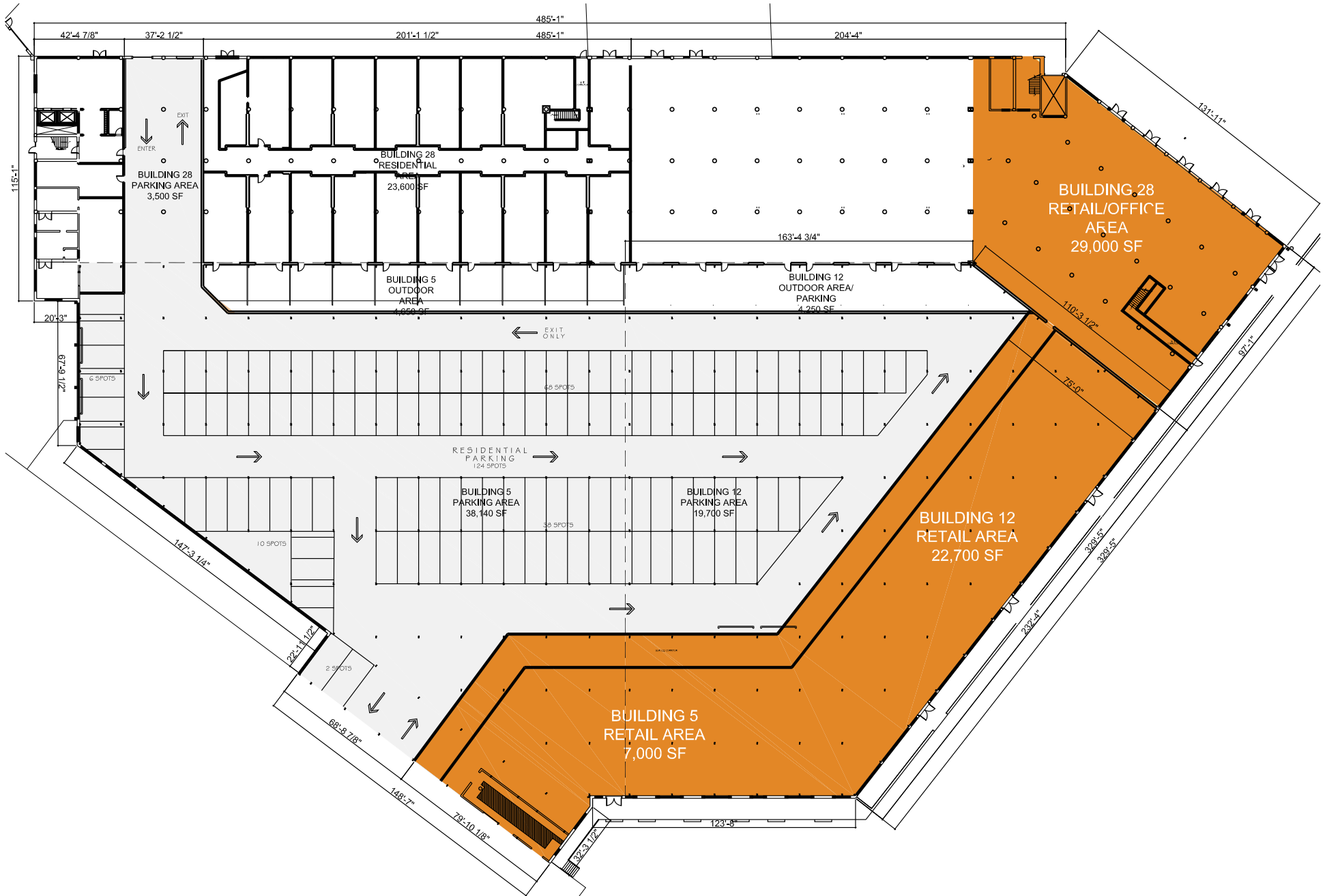


SITE PLAN
PLAN NORTH
SCALE: 1"=0' = 200'-0"

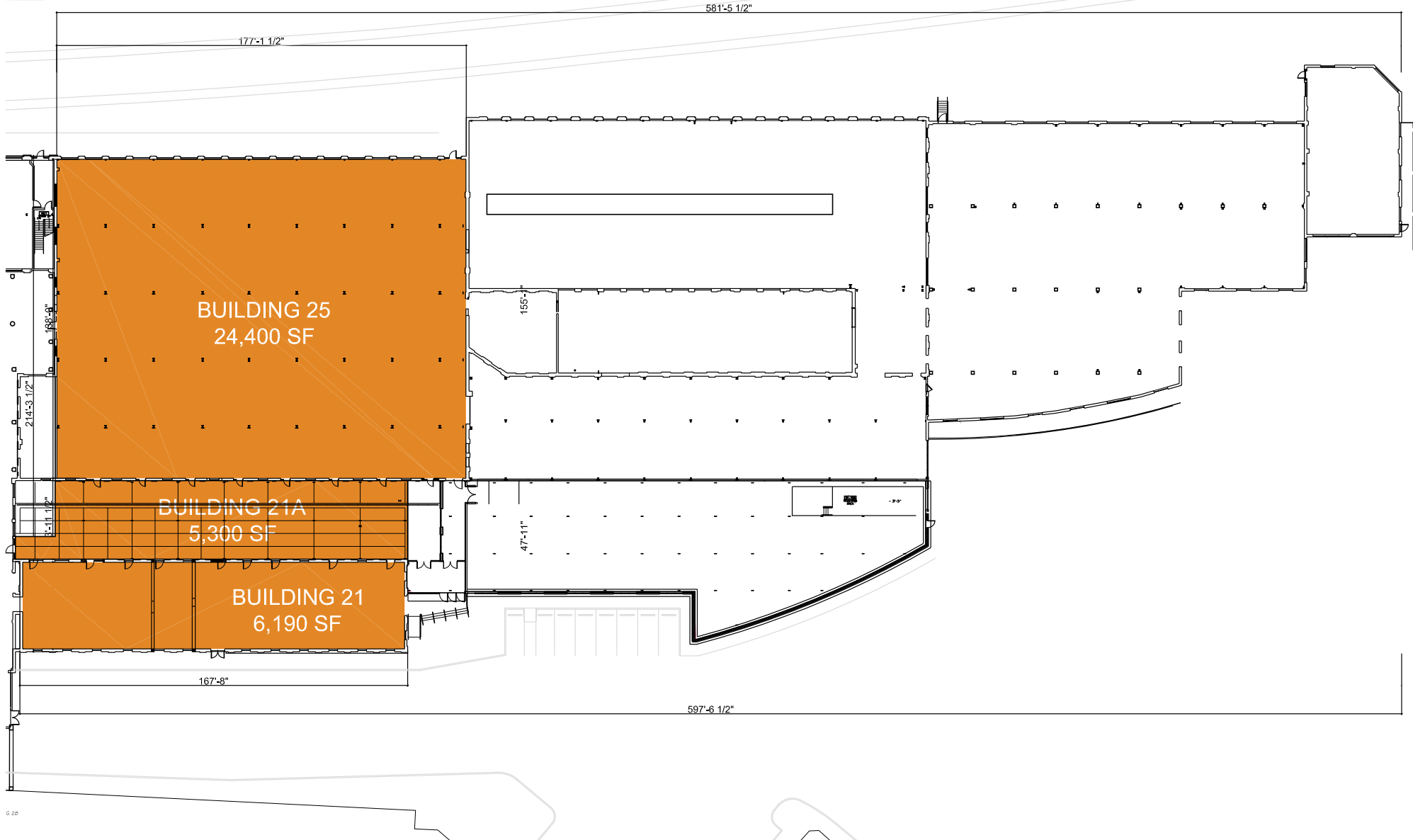
CLICK ON "SITE PLAN" TO GO
BACK TO ORIGINAL SITE PLAN



CLICK ON "SITE PLAN" TO GO
BACK TO ORIGINAL SITE PLAN



CLICK ON "SITE PLAN" TO GO
BACK TO ORIGINAL SITE PLAN



© 2018

CLICK ON "SITE PLAN" TO GO
BACK TO ORIGINAL SITE PLAN

