



**FOR LEASE | OFFICE / WAREHOUSE**

# 1023 N MONROE

SPOKANE, WA 99201

## Property Details

### 15,295 SF Building

- Industrial Space
- Excellent I-90 Access
- 16' Clear Height
- 2 - 12' x 12' Grade Doors
- 1 - 10' x 10' Grade Door

## Property Details

Prime location!! This large, 1.06 acre corner lot is just minutes from the heart of downtown Spokane and Kendall Yards. Right on Monroe St for optimal visibility.



## Lease Rate

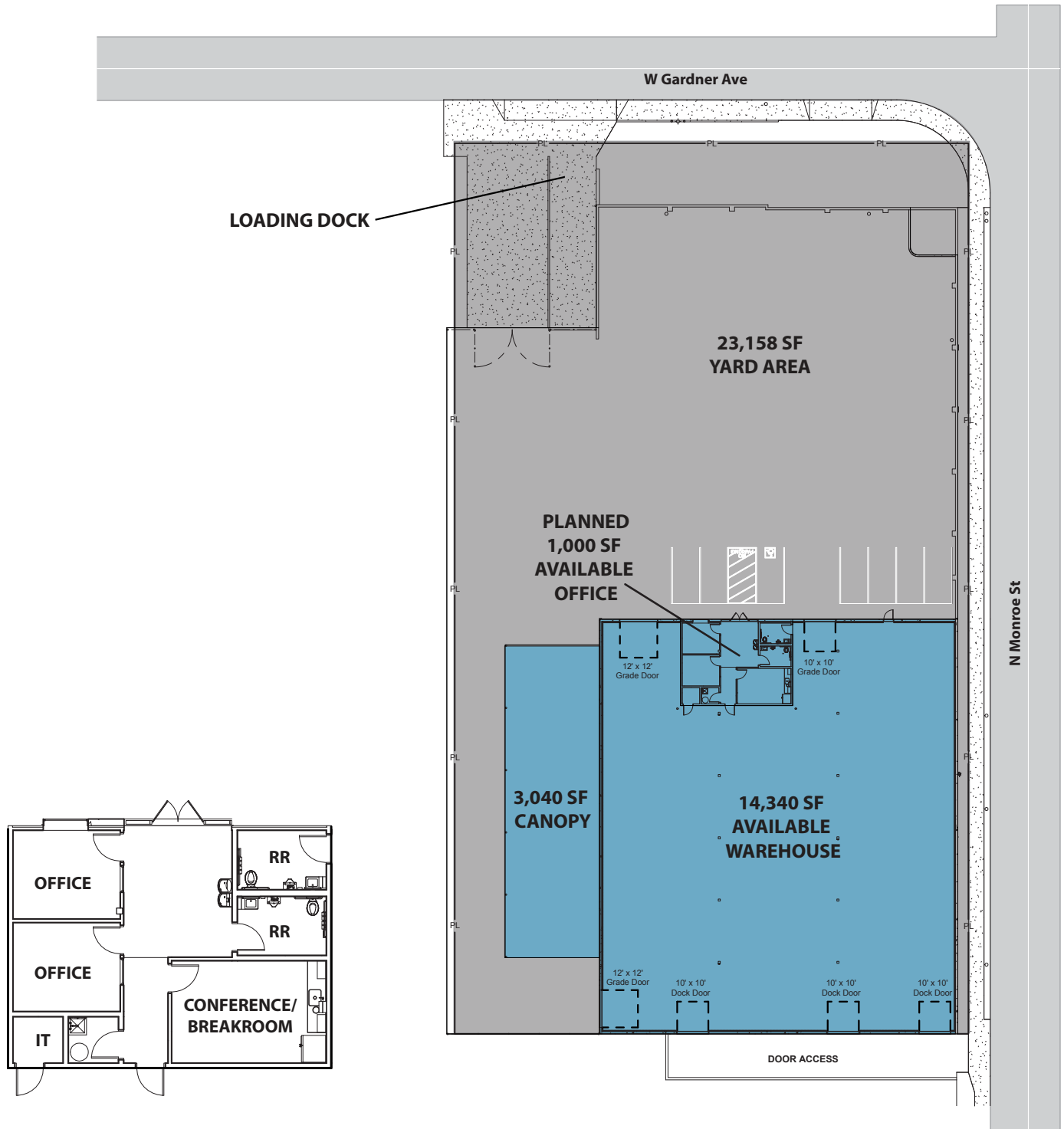
**\$23,390/MO/NNN**

# FOR LEASE | OFFICE / WAREHOUSE

1023 N MONROE | SPOKANE, WA 99201

## FLOORPLAN

1023 N MONROE  
SPOKANE, WA 99201



# FOR LEASE | OFFICE / WAREHOUSE

1023 N MONROE | SPOKANE, WA 99201

## PHOTOS

1023 N MONROE  
SPOKANE, WA 99201

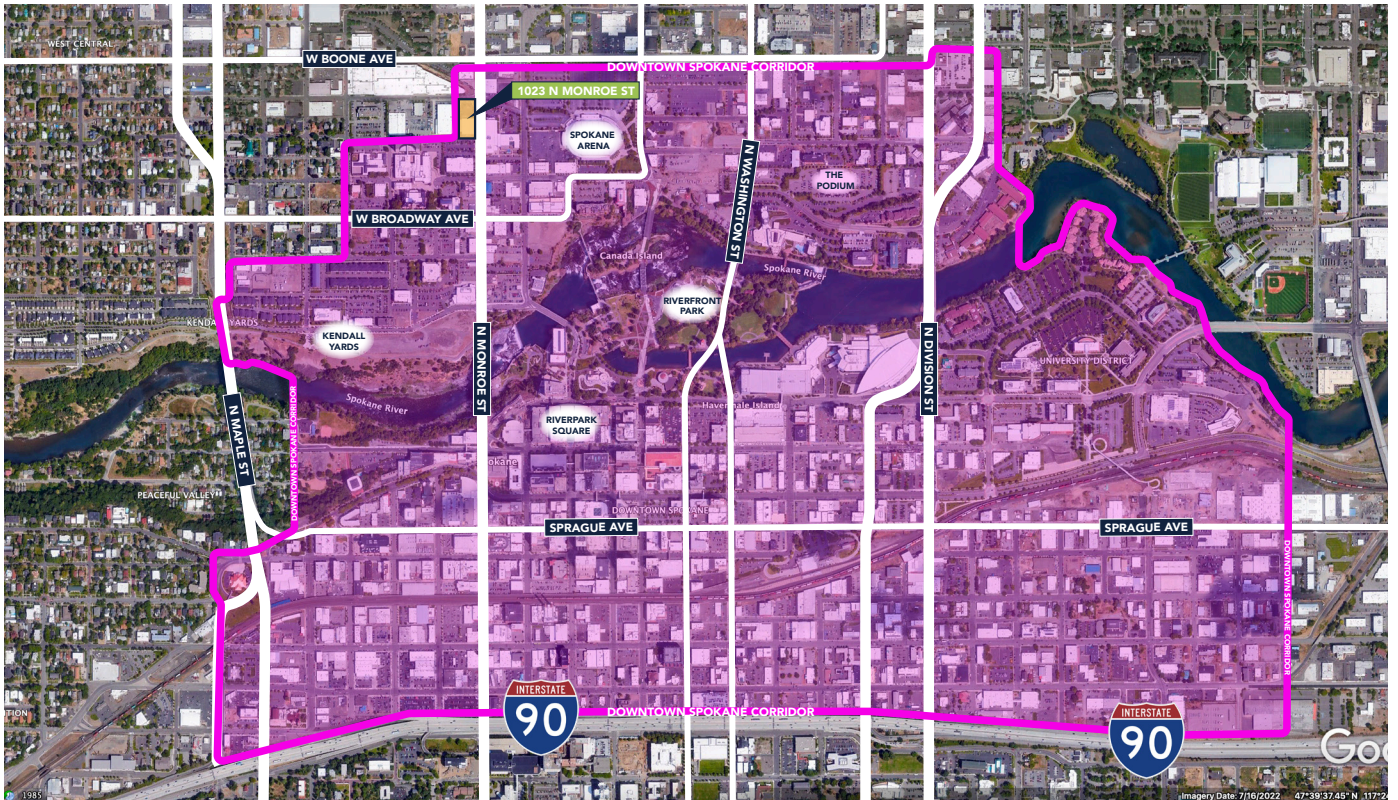


# FOR LEASE | OFFICE / WAREHOUSE

1023 N MONROE | SPOKANE, WA 99201

## MAP

1023 N MONROE  
SPOKANE, WA 99201



 DOWNTOWN SPOKANE CORRIDOR

