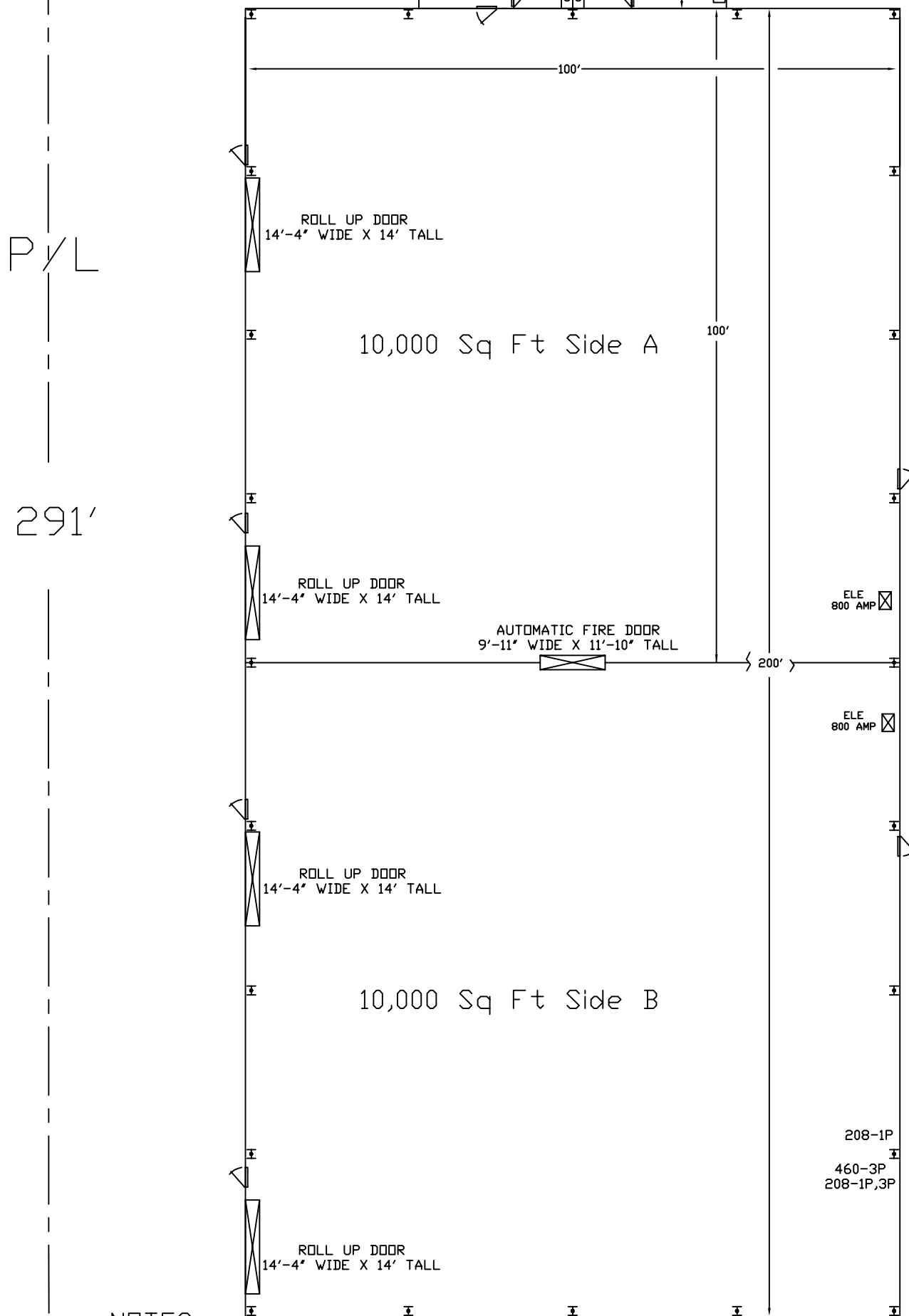
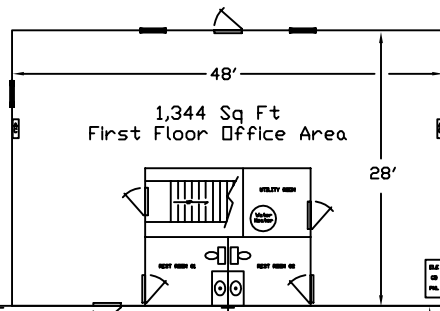
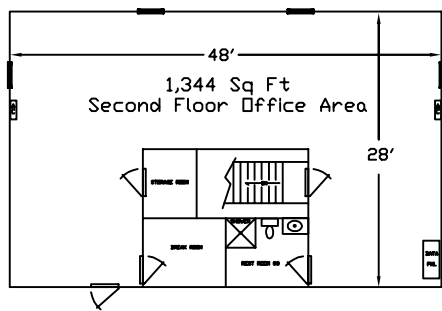


DON WESTBROOK DR

30'

161 Don Westbrooke Dr Building



NOTES:

- 1- Land Area 1.17 Acres
- 2- Building Sq Ft under Roof 23,000
- 3- 2 Ea Seperate Electrical Services
1 @ 800 A / 1 @ 800 A
- 4- Natural Gas Heated / Mini Split Air Conditioned Offices
- 5- 3 Ea Seperate Bathrooms and 1 Shower
- 6- Hi Bay LED Lighting and SKY LIGHTS
- 7- 4 Ea Drive In Roll-Up Doors
- 8- Division Wall in middle of Building for
2 Ea 10,000 Sq Ft Areas.
- 9- City Water and City Sewer

161 D.W. LLC Building	
JASPER GEORGIA	
TITLE: 161 Building	
SIZE: 23,000 SQ FT	1.107 ACRES
GENERATED BY:	DATE: 2-4-25
DRAWN BY:	DATE:
SCALE: NA	DWG NO.