

BAR/RESTAURANT SPACE AVAILABLE

222 Market Street
Old City, Philadelphia



PRECISION | REALTY GROUP, LLC

SITE DETAILS

- Approximately 1,400 square feet ground floor retail
- Liquor License available
- Turn-key restaurant

ABOUT THE NEIGHBORHOOD

Located in the historic area of Old City, the neighborhood offers excellent hotels, a wide range of dining and nightlife establishments, independent retailers and a diverse mix of technology, media, professional and service organizations. Old City employers range from major institutions to solo entrepreneurs, together representing a significant segment of the regional economy.

**OLD
CITY** ★

independent by design

Some 8,000 residents live in historic townhouses, industrial loft apartments and new condominium properties.

www.oldcitydistrict.org



AERIAL

ALAN KRAWITZ
Alan@PrecisionRG.com
610.420.4559

STEVE JEFFRIES
SJeffries@PrecisionRG.com
267.707.3347

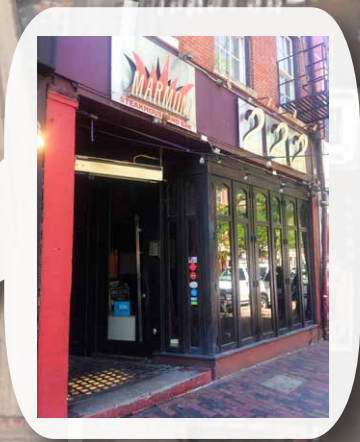
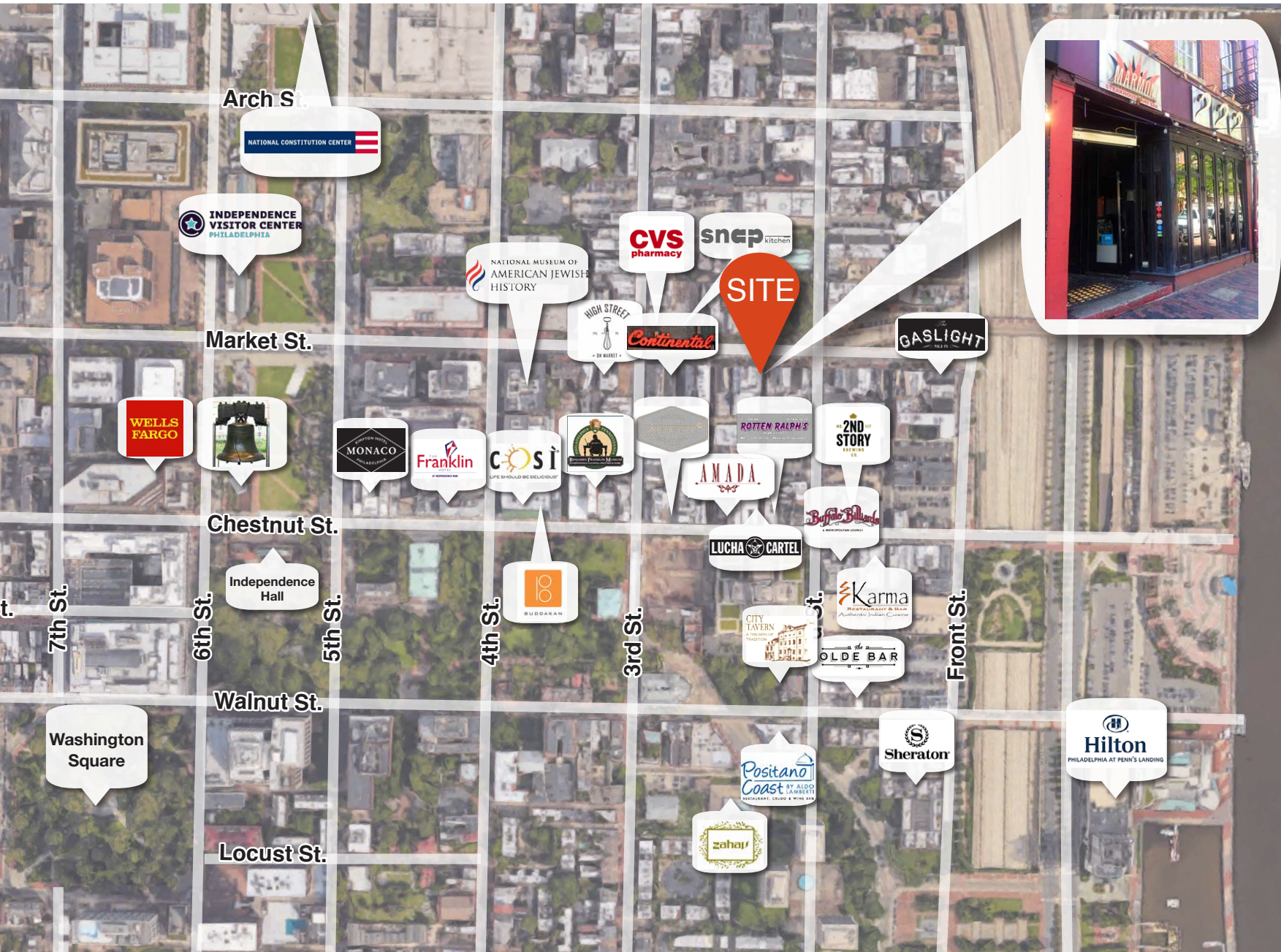


Information contained herein is from sourced deemed reliable, but no warranty or representation is made as to the accuracy thereof and the foregoing is subject to errors, omissions, or change without notice.

AERIAL

ALAN KRAWITZ
Alan@PrecisionRG.com
610.420.4559

STEVE JEFFRIES
SJeffries@PrecisionRG.com
267.707.3347



Delaware River