

RETAIL SPACE FOR LEASE

2324  
SPARROWS POINT RD  
BALTIMORE, MD 21219



PROUD PARTNER  
**XTEAM**  
RETAIL ADVISORS

CONTACT:

**OLIVER WEINBERG**

o 443.610.9618

E [oliver@mfirealty.com](mailto:oliver@mfirealty.com)

**MICHAEL STOLTZ**

o 410.952.7869

E [mstoltz@mfirealty.com](mailto:mstoltz@mfirealty.com)



# PROPERTY HIGHLIGHTS

- 2,400 SF, free-standing building for lease
- 13 parking spaces on site
- Zoning: BL
- More than 105' of frontage on Sparrows Point Road
- Surrounded by >1 million square feet of warehouse & distribution facilities



DEMOGRAPHICS	1 MILE	3 MILE	5 MILE
POPULATION:	6,115	29,272	85,807
AVERAGE HH INC:	\$147,660	\$116,278	\$99,442
TOTAL HOUSEHOLDS:	2,483	10,884	33,240

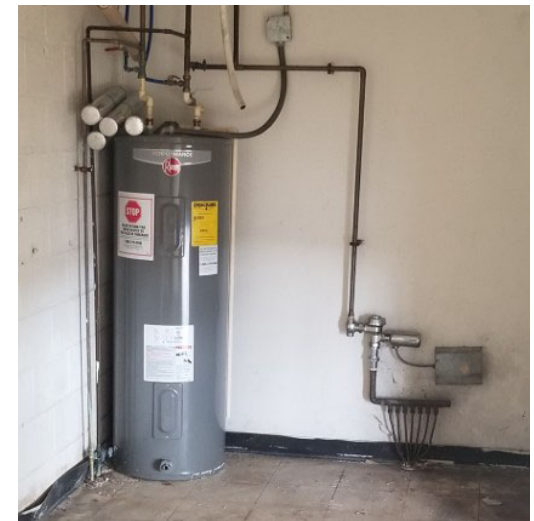
## JOIN AREA RETAILERS:



EXTERIOR PHOTO:



INTERIOR PHOTOS:





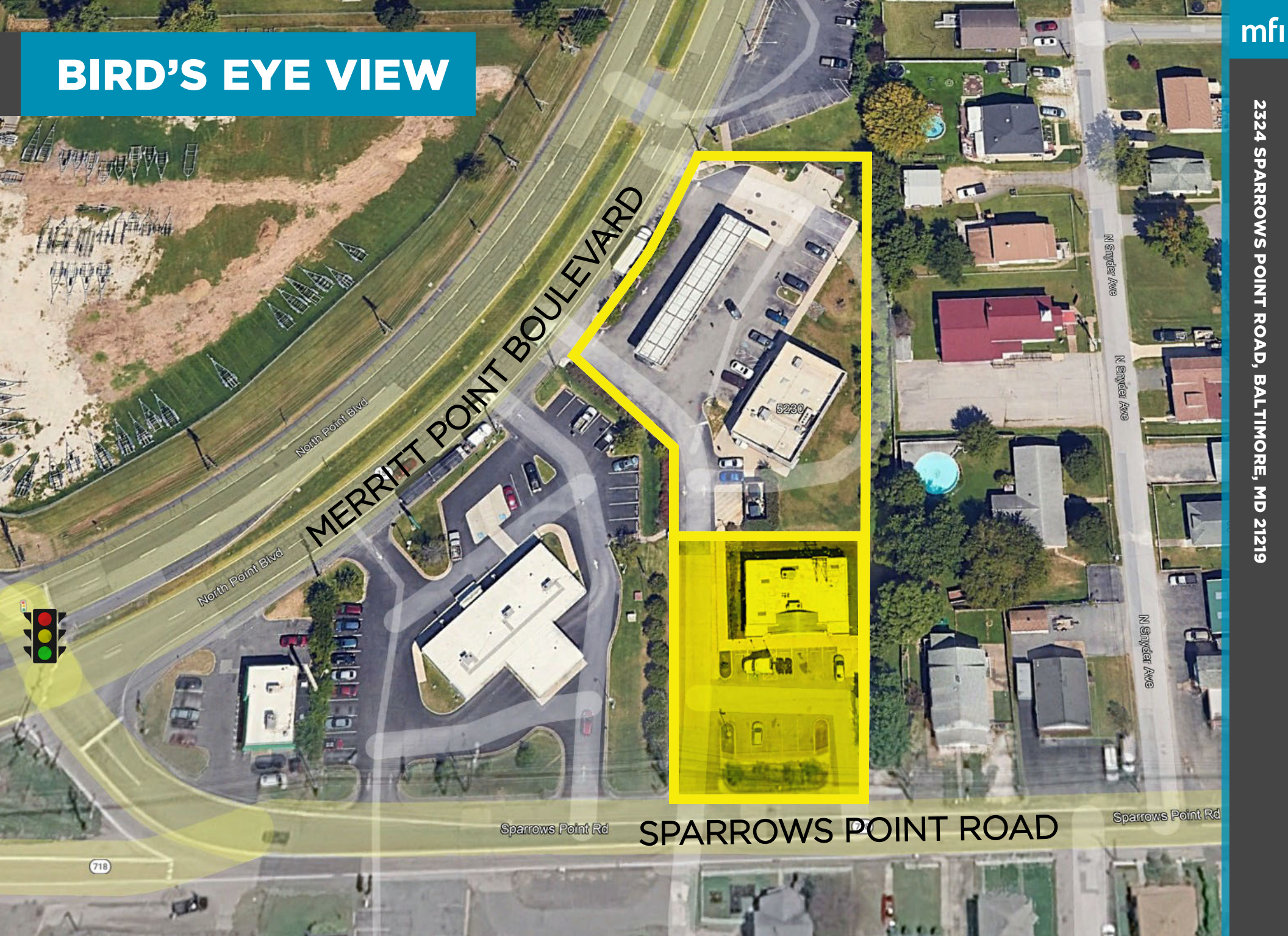
# AERIAL



**2324 SPARROWS POINT RD**

2324 SPARROWS POINT ROAD, BALTIMORE, MD 21219

# BIRD'S EYE VIEW



MERRITT POINT BOULEVARD

SPARROWS POINT ROAD

5230

718