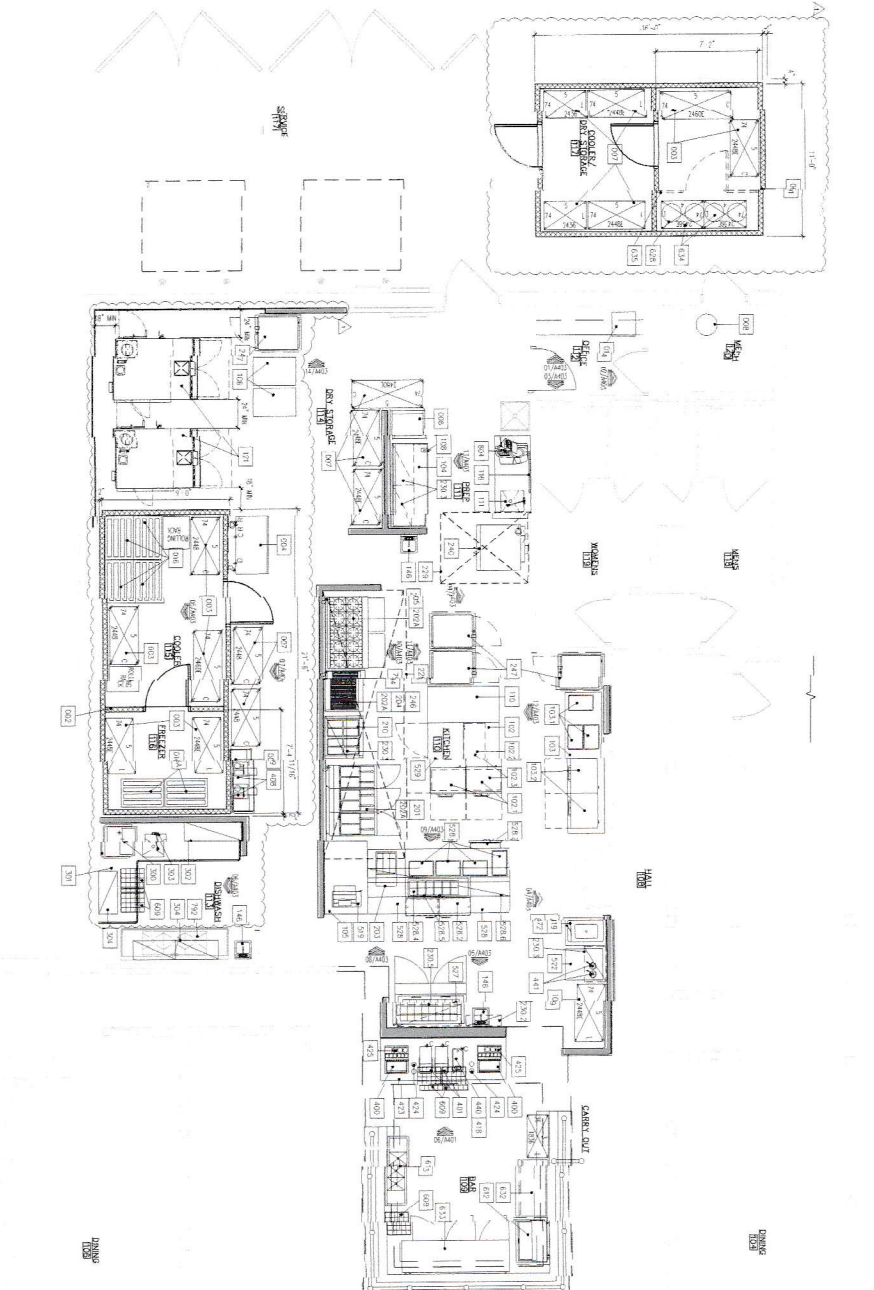


KITCHEN EQUIPMENT SCHEDULE

Item No.	Description	Qty	Item Number	Provided	Estimated By
101	1/2" Thick Counter	1	101	YES	KES
102	1/2" Thick Counter	1	102	YES	KES
103	1/2" Thick Counter	1	103	YES	KES
104	1/2" Thick Counter	1	104	YES	KES
105	1/2" Thick Counter	1	105	YES	KES
106	1/2" Thick Counter	1	106	YES	KES
107	1/2" Thick Counter	1	107	YES	KES
108	1/2" Thick Counter	1	108	YES	KES
109	1/2" Thick Counter	1	109	YES	KES
110	1/2" Thick Counter	1	110	YES	KES
111	1/2" Thick Counter	1	111	YES	KES
112	1/2" Thick Counter	1	112	YES	KES
113	1/2" Thick Counter	1	113	YES	KES
114	1/2" Thick Counter	1	114	YES	KES
115	1/2" Thick Counter	1	115	YES	KES
116	1/2" Thick Counter	1	116	YES	KES
117	1/2" Thick Counter	1	117	YES	KES
118	1/2" Thick Counter	1	118	YES	KES
119	1/2" Thick Counter	1	119	YES	KES
120	1/2" Thick Counter	1	120	YES	KES
121	1/2" Thick Counter	1	121	YES	KES
122	1/2" Thick Counter	1	122	YES	KES
123	1/2" Thick Counter	1	123	YES	KES
124	1/2" Thick Counter	1	124	YES	KES
125	1/2" Thick Counter	1	125	YES	KES
126	1/2" Thick Counter	1	126	YES	KES
127	1/2" Thick Counter	1	127	YES	KES
128	1/2" Thick Counter	1	128	YES	KES
129	1/2" Thick Counter	1	129	YES	KES
130	1/2" Thick Counter	1	130	YES	KES
131	1/2" Thick Counter	1	131	YES	KES
132	1/2" Thick Counter	1	132	YES	KES
133	1/2" Thick Counter	1	133	YES	KES
134	1/2" Thick Counter	1	134	YES	KES
135	1/2" Thick Counter	1	135	YES	KES
136	1/2" Thick Counter	1	136	YES	KES
137	1/2" Thick Counter	1	137	YES	KES
138	1/2" Thick Counter	1	138	YES	KES
139	1/2" Thick Counter	1	139	YES	KES
140	1/2" Thick Counter	1	140	YES	KES
141	1/2" Thick Counter	1	141	YES	KES
142	1/2" Thick Counter	1	142	YES	KES
143	1/2" Thick Counter	1	143	YES	KES
144	1/2" Thick Counter	1	144	YES	KES
145	1/2" Thick Counter	1	145	YES	KES
146	1/2" Thick Counter	1	146	YES	KES
147	1/2" Thick Counter	1	147	YES	KES
148	1/2" Thick Counter	1	148	YES	KES
149	1/2" Thick Counter	1	149	YES	KES
150	1/2" Thick Counter	1	150	YES	KES
151	1/2" Thick Counter	1	151	YES	KES
152	1/2" Thick Counter	1	152	YES	KES
153	1/2" Thick Counter	1	153	YES	KES
154	1/2" Thick Counter	1	154	YES	KES
155	1/2" Thick Counter	1	155	YES	KES
156	1/2" Thick Counter	1	156	YES	KES
157	1/2" Thick Counter	1	157	YES	KES
158	1/2" Thick Counter	1	158	YES	KES
159	1/2" Thick Counter	1	159	YES	KES
160	1/2" Thick Counter	1	160	YES	KES
161	1/2" Thick Counter	1	161	YES	KES
162	1/2" Thick Counter	1	162	YES	KES
163	1/2" Thick Counter	1	163	YES	KES
164	1/2" Thick Counter	1	164	YES	KES
165	1/2" Thick Counter	1	165	YES	KES
166	1/2" Thick Counter	1	166	YES	KES
167	1/2" Thick Counter	1	167	YES	KES
168	1/2" Thick Counter	1	168	YES	KES
169	1/2" Thick Counter	1	169	YES	KES
170	1/2" Thick Counter	1	170	YES	KES
171	1/2" Thick Counter	1	171	YES	KES
172	1/2" Thick Counter	1	172	YES	KES
173	1/2" Thick Counter	1	173	YES	KES
174	1/2" Thick Counter	1	174	YES	KES
175	1/2" Thick Counter	1	175	YES	KES
176	1/2" Thick Counter	1	176	YES	KES
177	1/2" Thick Counter	1	177	YES	KES
178	1/2" Thick Counter	1	178	YES	KES
179	1/2" Thick Counter	1	179	YES	KES
180	1/2" Thick Counter	1	180	YES	KES
181	1/2" Thick Counter	1	181	YES	KES
182	1/2" Thick Counter	1	182	YES	KES
183	1/2" Thick Counter	1	183	YES	KES
184	1/2" Thick Counter	1	184	YES	KES
185	1/2" Thick Counter	1	185	YES	KES
186	1/2" Thick Counter	1	186	YES	KES
187	1/2" Thick Counter	1	187	YES	KES
188	1/2" Thick Counter	1	188	YES	KES
189	1/2" Thick Counter	1	189	YES	KES
190	1/2" Thick Counter	1	190	YES	KES
191	1/2" Thick Counter	1	191	YES	KES
192	1/2" Thick Counter	1	192	YES	KES
193	1/2" Thick Counter	1	193	YES	KES
194	1/2" Thick Counter	1	194	YES	KES
195	1/2" Thick Counter	1	195	YES	KES
196	1/2" Thick Counter	1	196	YES	KES
197	1/2" Thick Counter	1	197	YES	KES
198	1/2" Thick Counter	1	198	YES	KES
199	1/2" Thick Counter	1	199	YES	KES
200	1/2" Thick Counter	1	200	YES	KES



01 EQUIPMENT PLAN
Scale: 1/8" = 1'-0"



12/06/18
K101
EQUIPMENT PLAN
K101



910 BEAUMONT CENTRE PARKWAY
LEXINGTON, KENTUCKY 40513

J&M Foods, LLC
architect
design
consulting & services
5300 Central Lane
Lexington, Kentucky 40515
Phone: (502) 254-7170
www.jmf.com

PROJECT TYPE: REMODEL
CONVERSION