

300 BEALE STREET

FOR LEASE | CREATIVE SPACE w/ +/- 1,200 SF OUTDOOR PATIO

TCP
TOUCHSTONE
COMMERCIAL PARTNERS



WWW.TCPRE.COM

ZACH HAUPERT zhaupert@tcpre.com
C 415.812.1219

MICHAEL SANBERG msanberg@tcpre.com
C 415.697.6088

300 BEALE STREET

PROPERTY SUMMARY

ADDRESS

300 Beale Street, San Francisco, CA 94105

AVAILABLE SPACE

+/- 3,717 Square Feet

RENTAL RATE

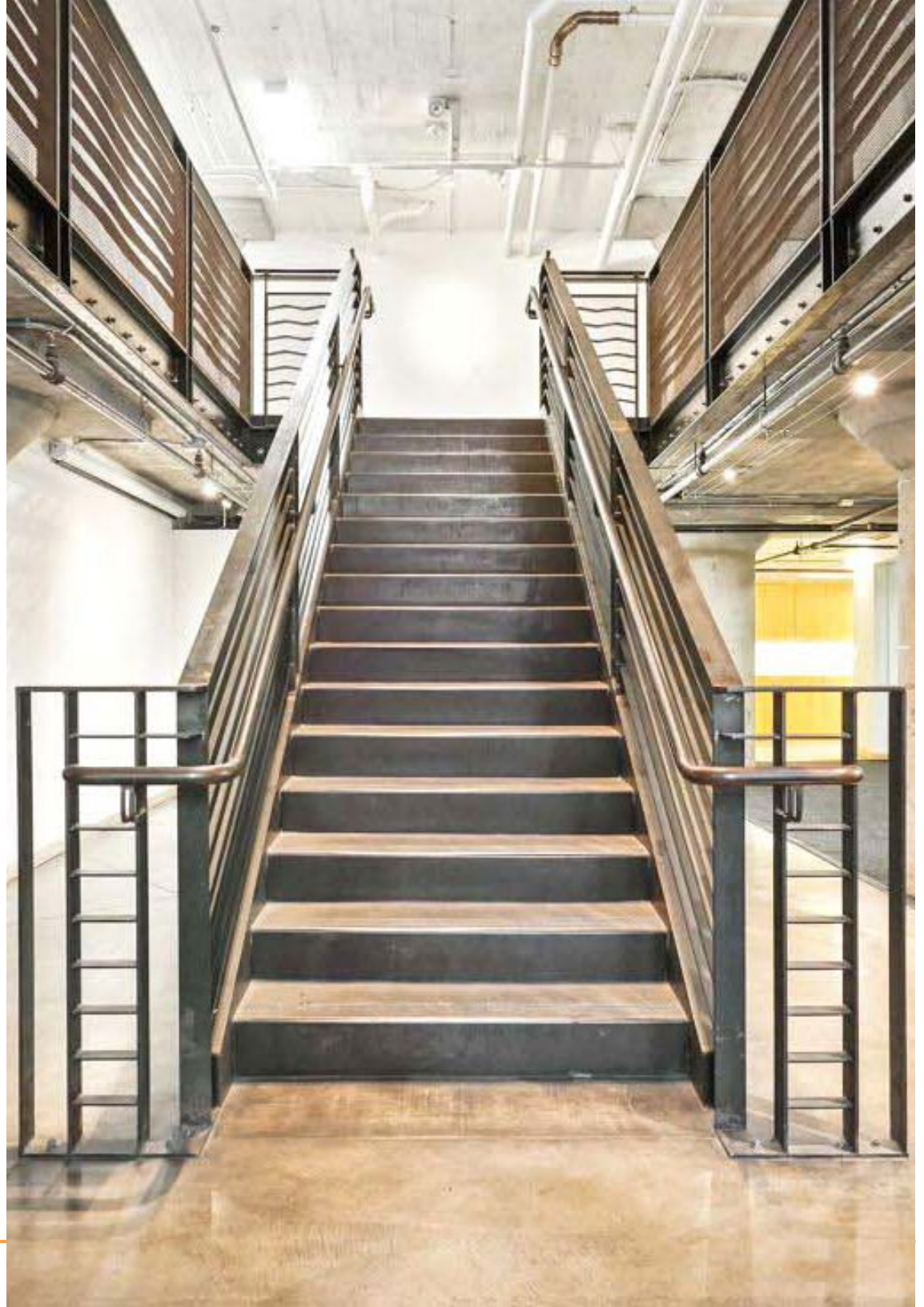
\$55 / Square Foot / Year

AVAILABLE

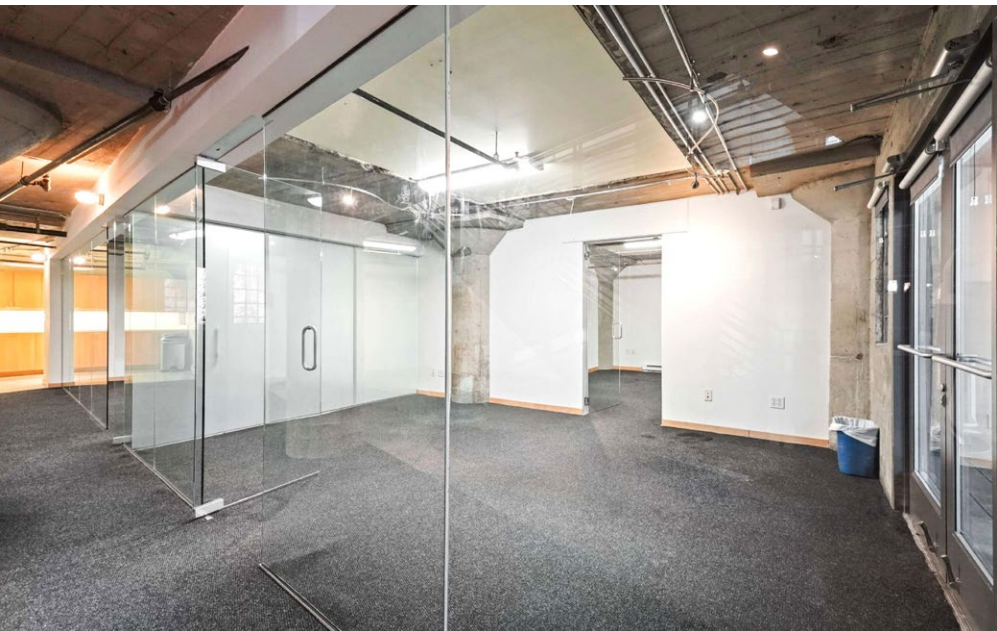
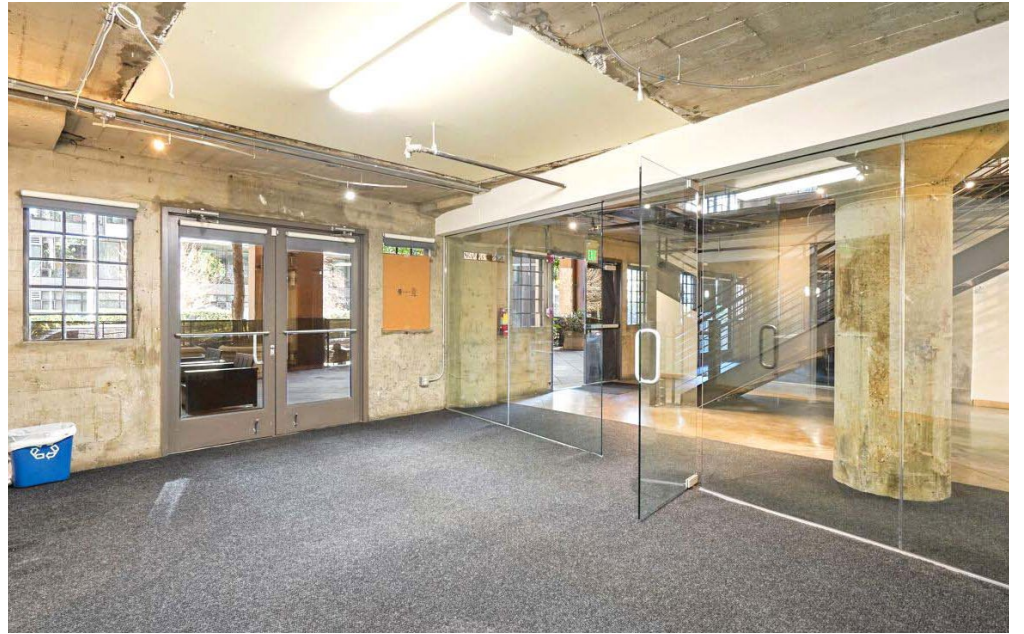
Immediately

BUILDING ATTRIBUTES

- + +/- 1,200 Square Foot Private Outdoor Patio Space w/ Heat Lamps and Furniture
- + Exposed Concrete Ceilings and Floors
- + Two (2) Large Conference Rooms
- + One (1) Meeting Room
- + Space For Up To Thirty (30) Workstations
- + Two (2) Private Bathrooms
- + Full Kitchen



300 BEALE STREET



300 BEALE STREET

LOCATION OVERVIEW

Desirable Rincon Hill location, walkable to nearby amenities, public transportation and to surrounding neighborhoods.



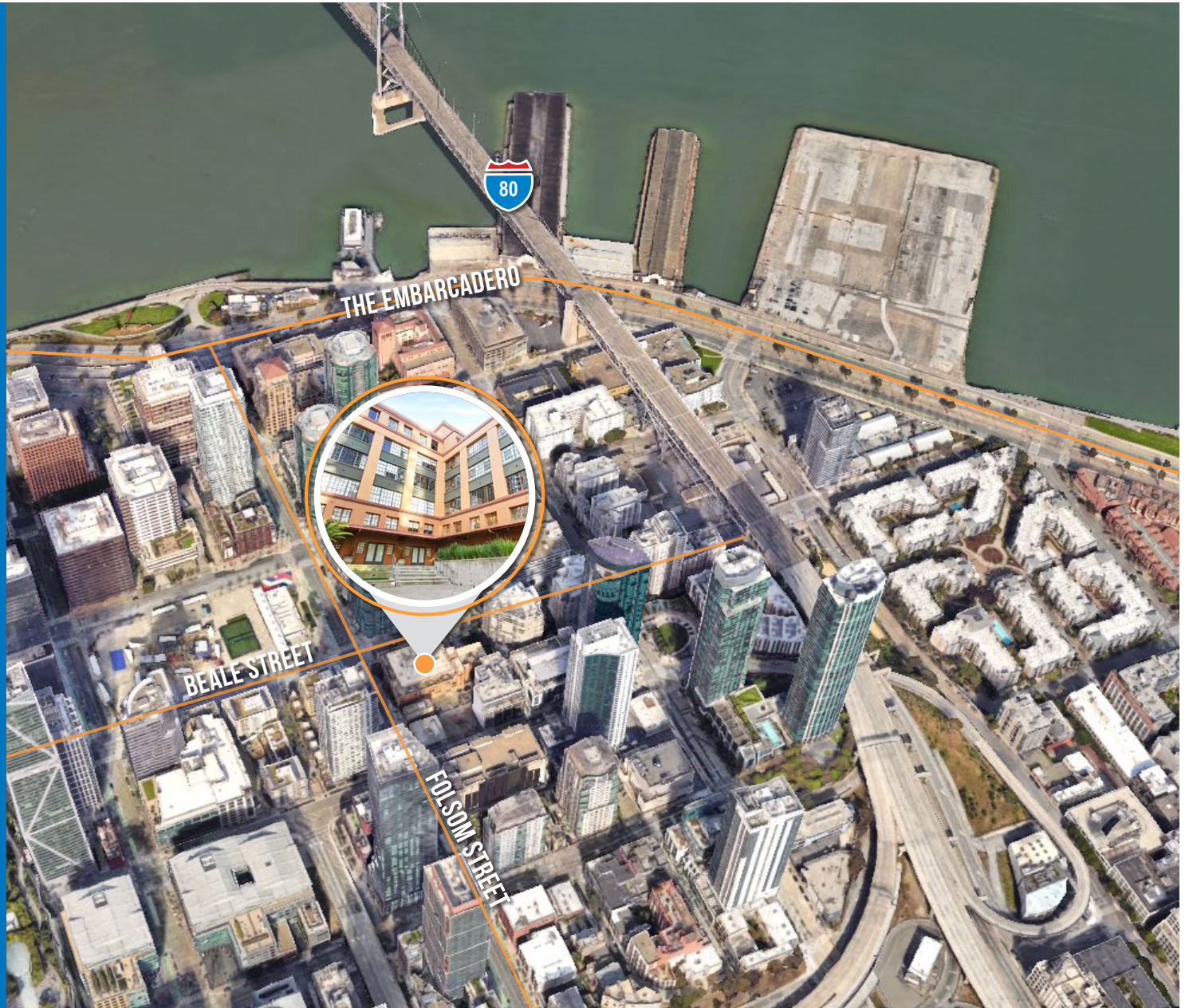
08 MIN to Rincon Park
10 MIN to Embarcadero Bart
10 MIN to Market St



04 MIN to Financial District
07 MIN to SOMA
12 MIN to Mission District



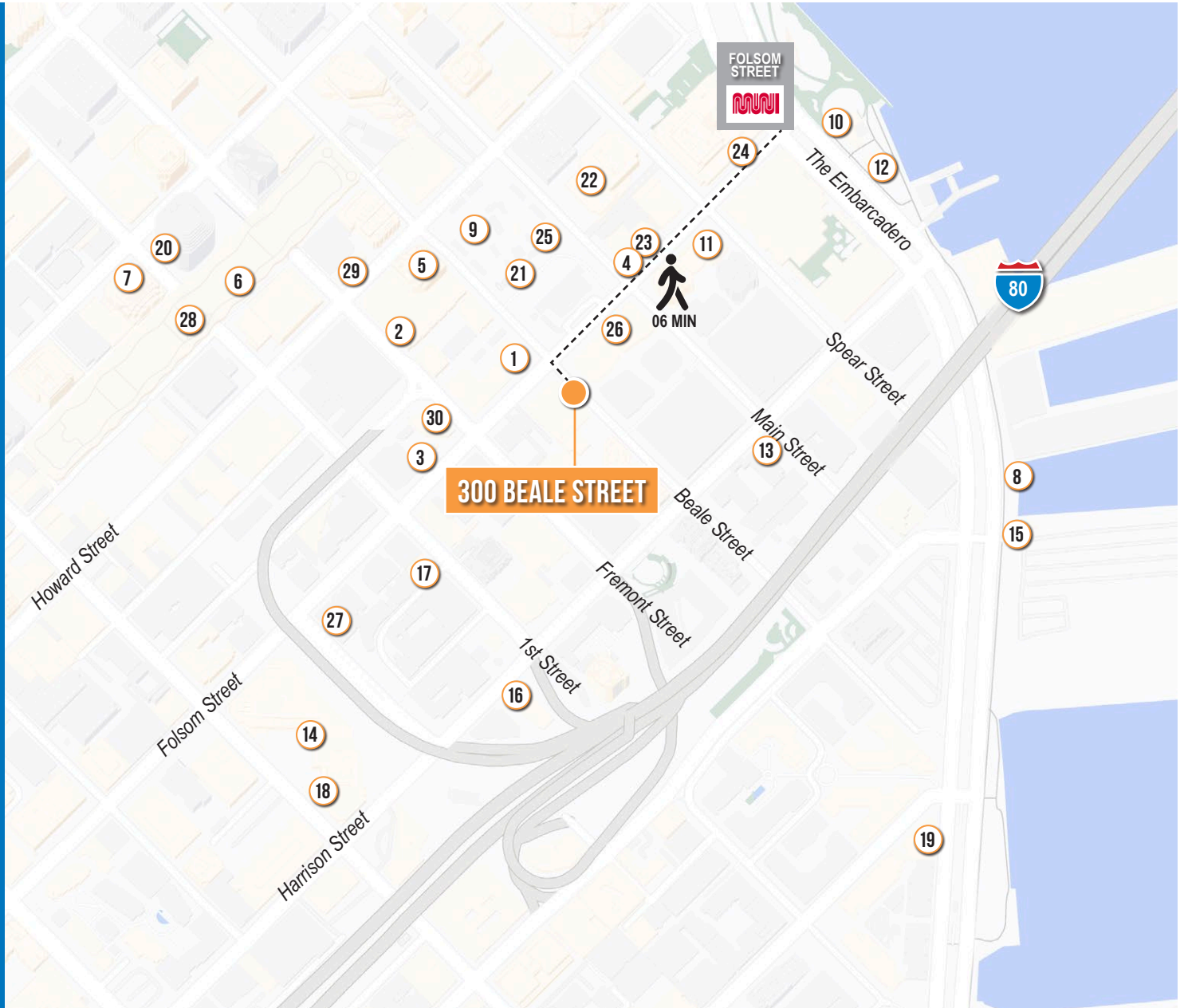
02 MIN to 80 On-Ramp
09 MIN to 280 On-Ramp
10 MIN to 101 On-Ramp



300 BEALE STREET

NEARBY AMENITIES

- 1.....Philz Coffee
- 2.....CorePower Yoga
- 3.....AKIKOS Sushi
- 4.....Sweetgreen
- 5.....Joe & The Juice
- 6.....Barebottle Beer Garden
- 7.....Starbucks
- 8.....Hi Dive Bar
- 9.....Pita Gyros
- 10.....EPIC Steak
- 11.....Prospect
- 12.....Waterbar
- 13.....Gabby Market & Deli
- 14.....Rooser & Rice
- 15.....Red's Java House
- 16.....Terra Gallery & Event Venue
- 17.....Cocoon Day Spa
- 18.....Social 303
- 19.....Delancey Street
- 20.....Salesforce Tower
- 21.....The Crossing
- 22.....Lightbox Cafe
- 23.....StretchLab
- 24.....Athleta
- 25.....The Cut Outdoor Cinema
- 26.....Woodlands Market
- 27.....DragonEats
- 28.....FITNESS SF
- 29.....Town Hall
- 30.....TruFusion



300 BEALE STREET



BARE BOTTLE BEER GARDEN



EPIC STEAK



SWEETGREEN



WATERBAR



JOE & THE JUICE

300 BEALE
STREET



TCP
TOUCHSTONE
COMMERCIAL PARTNERS

Corp. Lic. 01112906
www.tcppe.com

ZACH HAUPERT

C 415.812.1219

zhaupert@tcppe.com DRE # 01822907

MICHAEL SANBERG

C 415.697.6088

msanberg@tcppe.com DRE # 01930041

This document has been prepared by Touchstone Commercial Partners for advertising and general information only. Touchstone Commercial Partners makes no guarantees, representations or warranties of any kind, expressed or implied, regarding the information including, but not limited to, warranties of content, accuracy and reliability. Any interested party should undertake their own inquiries as to the accuracy of the information. Touchstone Commercial Partners excludes unequivocally all inferred or implied terms, conditions and warranties arising out of this document and excludes all liability for loss and damages arising there from. This publication is the copyrighted property of Touchstone Commercial Partners and/or its licensor(s). ©2026. All rights reserved.