



Industrial Space for Lease

EXECUTIVE PARK BUILDING F
6125 E CONNECTICUT AVE, KANSAS CITY, MISSOURI

Property Highlights

- 6,569 sf available
- 4,323 sf of office
- (2) 10' W x 12' H drive-in doors
- Highly centralized location within Kansas City Metro
- Excellent access to I-35, I-29, I-435 and 210 Hwy
- 16' clear height
- All suites fully heated and air conditioned
- Well maintained building in business park setting
- Leasing at \$7.00/sf, NNN

For information, please contact:

John F. Hassler
Executive Managing Director
t 816-268-4208
jhassler@nzimmer.com

Mark C. Long, CRE, SIOR, CCIM, LEED AP
President and Chief Executive Officer
t 816-512-1011
mlong@nzimmer.com

1220 Washington Street, Suite 300
Kansas City, MO 64105

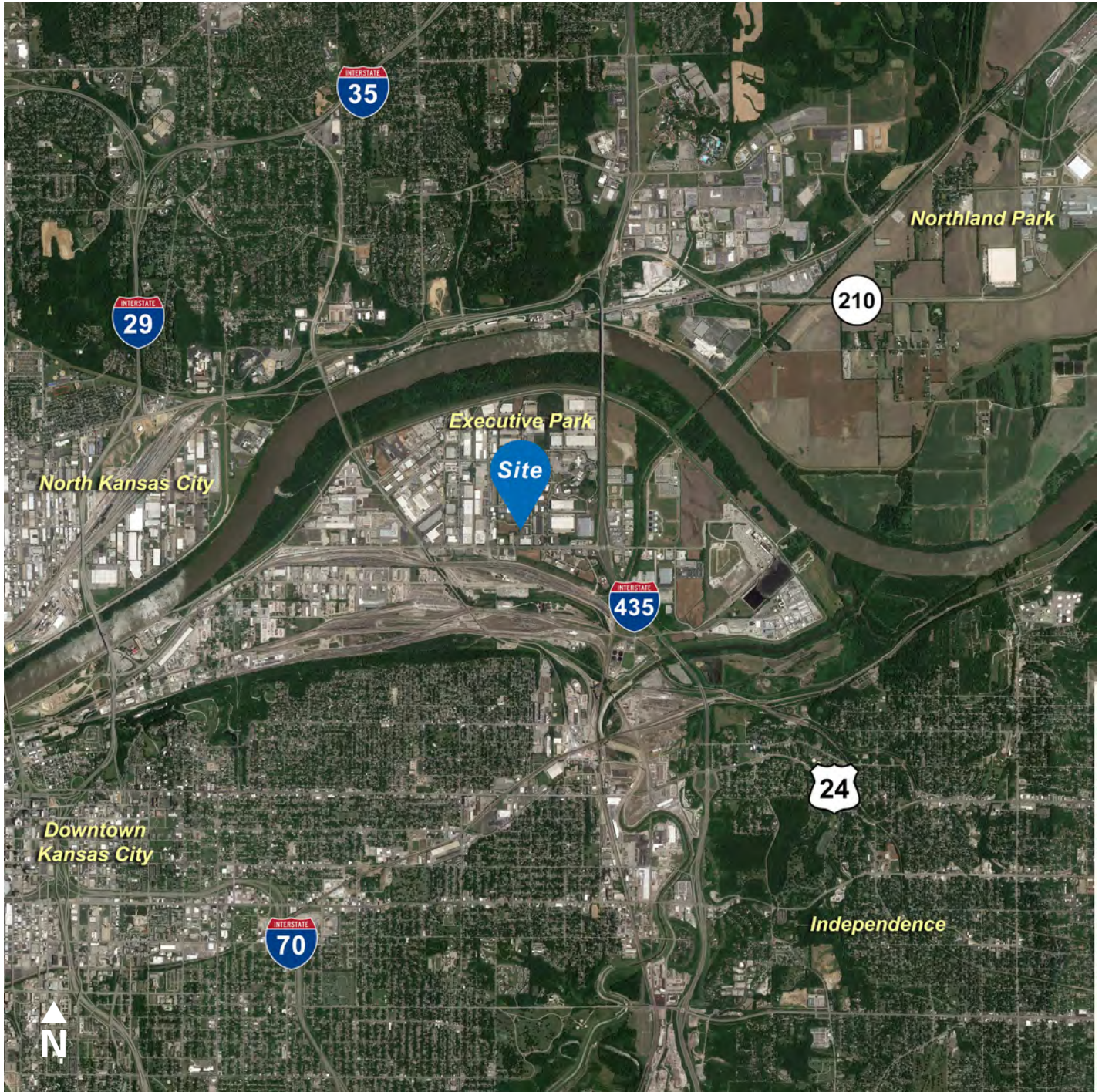
nrmkzimmer.com



NEWMARK
ZIMMER

The information contained herein has been obtained from sources deemed reliable but has not been verified and no guarantee, warranty or representation, either express or implied, is made with respect to such information. Terms of sale or lease and availability are subject to change or withdrawal without notice.

6125 E CONNECTICUT AVE, KANSAS CITY, MISSOURI



CONTACT

John F. Hassler

Executive Managing Director

t 816-268-4208

jhassler@zimmer.com

nmrkzimmer.com

Mark C. Long, CRE, SIOR, CCIM, LEED AP

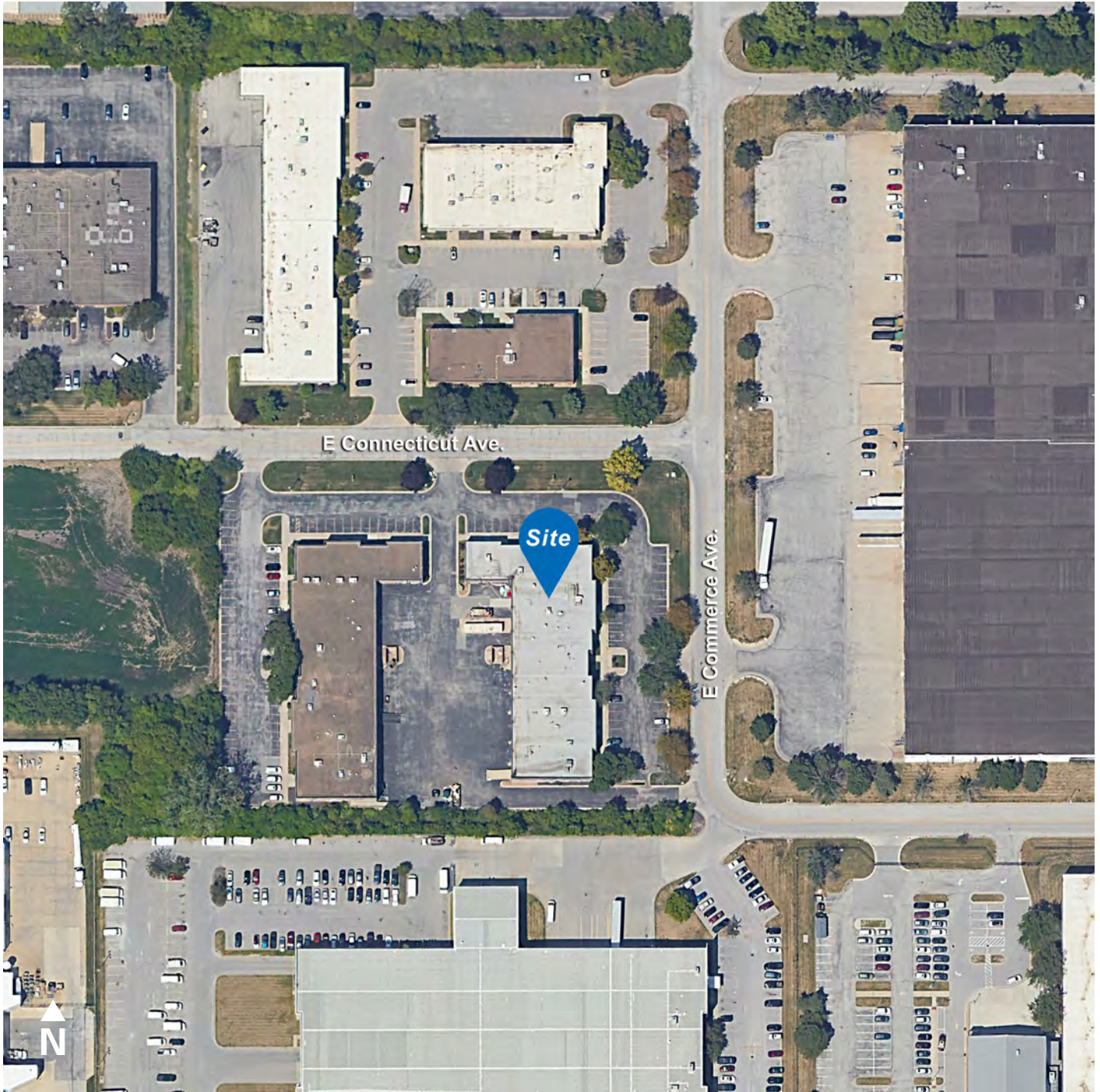
President and Chief Executive Officer

t 816-512-1011

mlong@zimmer.com

NEWMARK
ZIMMER

6125 E CONNECTICUT AVE, KANSAS CITY, MISSOURI



CONTACT

John F. Hassler

Executive Managing Director

t 816-268-4208

jhassler@zimmer.com

nmrkzimmer.com

Mark C. Long, CRE, SIOR, CCIM, LEED AP

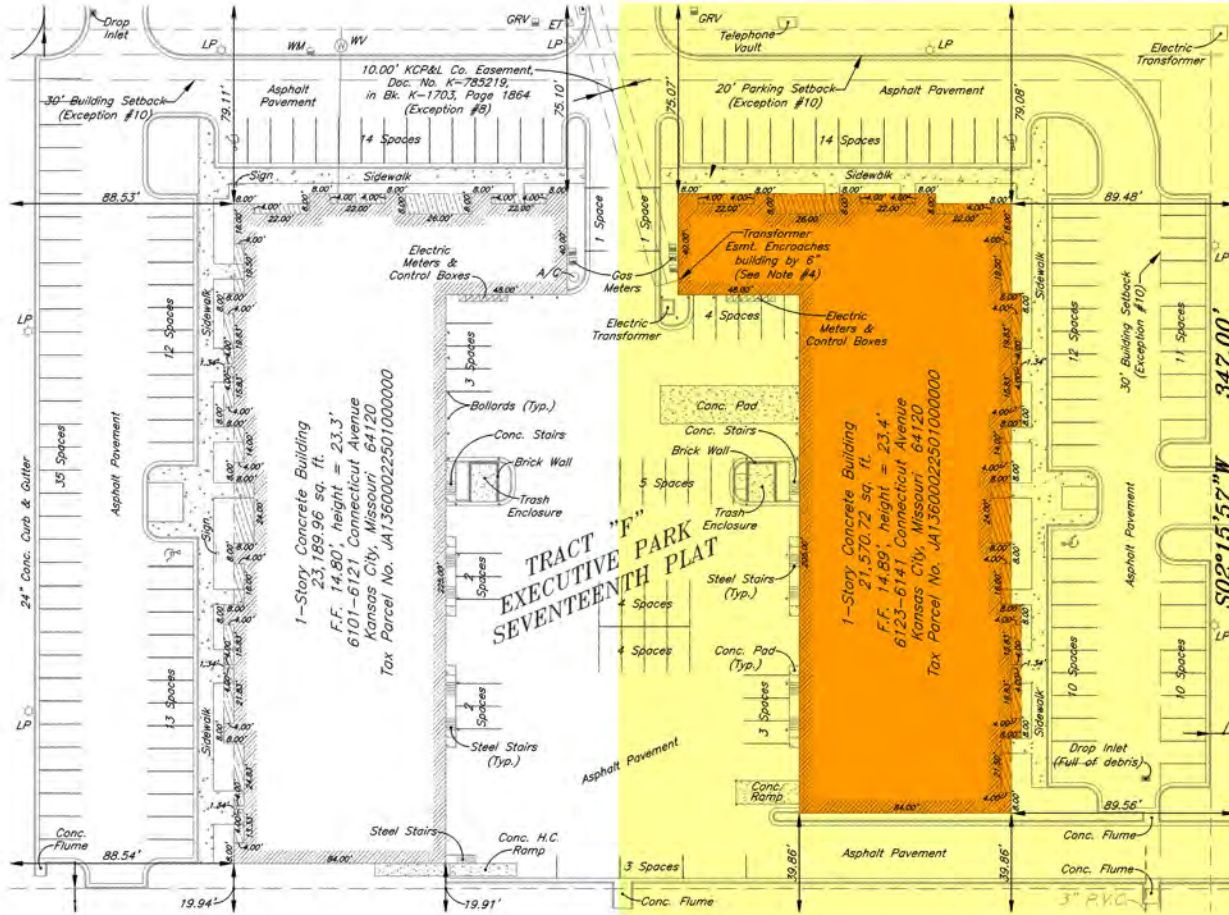
President and Chief Executive Officer

t 816-512-1011

mlong@zimmer.com

NEWMARK
ZIMMER

Building Plan



CONTACT

John F. Hassler
 Executive Managing Director
 t 816-268-4208
 jhassler@zimmer.com

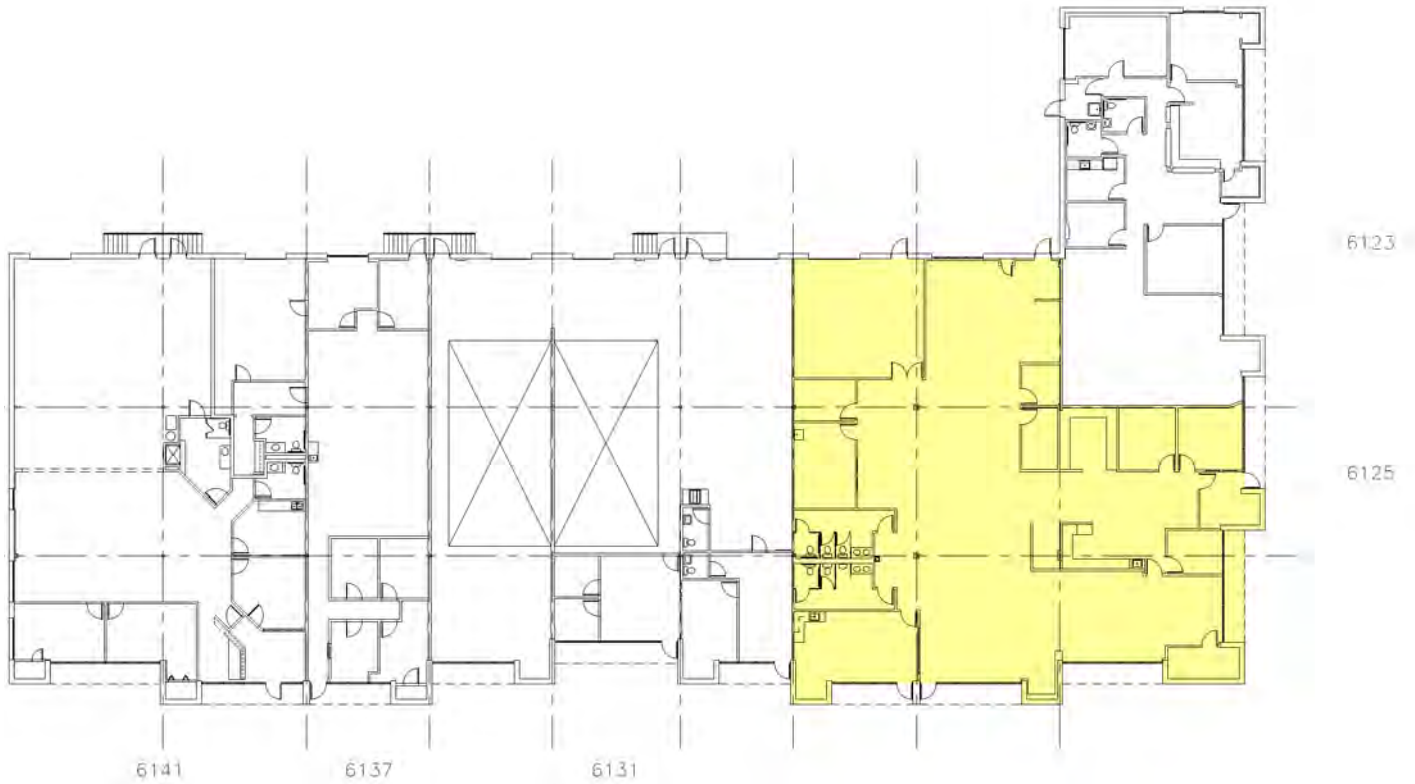
Mark C. Long, CRE, SIOR, CCIM, LEED AP
 President and Chief Executive Officer
 t 816-512-1011
 mlong@zimmer.com

nmrkzimmer.com



6125 E CONNECTICUT AVE, KANSAS CITY, MISSOURI

Floor Plan



CONTACT

John F. Hassler

Executive Managing Director

t 816-268-4208

jhassler@zimmer.com

nmrkzimmer.com

Mark C. Long, CRE, SIOR, CCIM, LEED AP

President and Chief Executive Officer

t 816-512-1011

m-long@zimmer.com

NEWMARK
ZIMMER