

FOR LEASE

The Julia

333 C Street, San Diego, CA 92101



Retail & Office Space **For Lease**

EMMETT CAHILL

619.243.8470

ecahill@qfcre.com

BRE #02033604

PETER WRIGHT

619.243.8450

pwright@qfcre.com

BRE #01846272

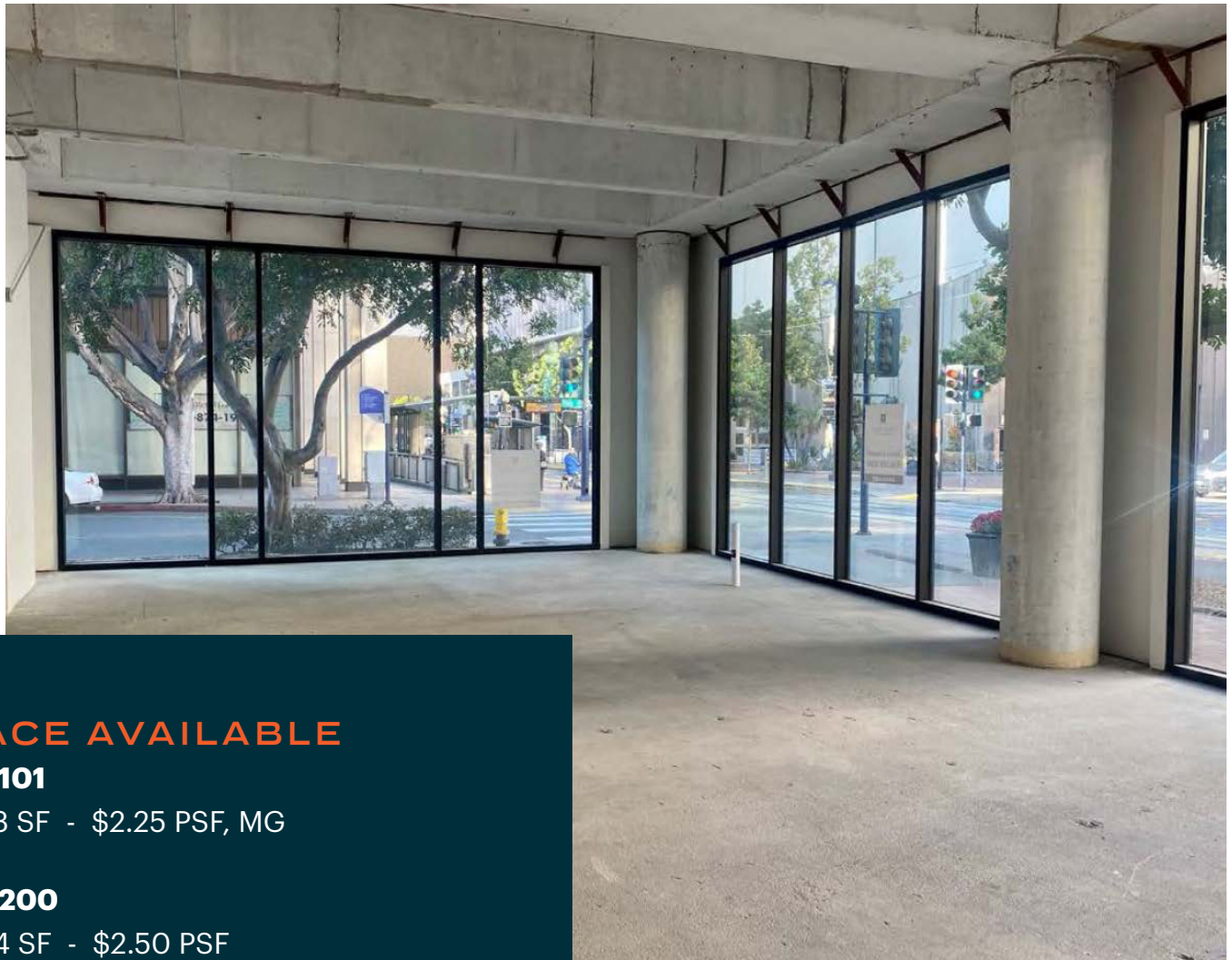
DOMINICK MARTINEZ

619.243.8468

dmartinez@qfcre.com

BRE #02191570

The information contained here has been obtained from sources considered to be reliable, but no guarantee of its accuracy is made by this company. In addition, no representation is made respecting zoning, condition of title, dimensions or any matters of a legal or environmental nature. Such matters should be referred to legal counsel for determination. Terms and conditions are subject to change without prior notice. Subject to errors and omissions.



SPACE AVAILABLE

Suite 101

±2,633 SF - \$2.25 PSF, MG

Suite 200

±3,884 SF - \$2.50 PSF

SPACE USE

Office/Retail

PROPERTY HIGHLIGHTS

- Ground floor office/retail space located in the heart of Downtown San Diego
- Tremendous linear frontage on C St (between 3rd and 4th Ave) with highly visible exterior signage opportunity
- Adjacent to the US Grant Hotel, one of San Diego's timeless hotels featuring 270 guest rooms



EMMETT CAHILL
619.243.8470
ecahill@qfcre.com
BRE #02033604

PETER WRIGHT
619.243.8450
pwright@qfcre.com
BRE #01846272

DOMINICK MARTINEZ
619.243.8468
dmartinez@qfcre.com
BRE #02191570

The information contained here has been obtained from sources considered to be reliable, but no guarantee of its accuracy is made by this company. In addition, no representation is made respecting zoning, condition of title, dimensions or any matters of a legal or environmental nature. Such matters should be referred to legal counsel for determination. Terms and conditions are subject to change without prior notice. Subject to errors and omissions.

SUITE 101



PHOTOS

Conceptual Photo



Conceptual Photo



EMMETT CAHILL
619.243.8470
ecahill@qfcre.com
BRE #02033604

PETER WRIGHT
619.243.8450
pwright@qfcre.com
BRE #01846272

DOMINICK MARTINEZ
619.243.8468
dmartinez@qfcre.com
BRE #02191570

The information contained here has been obtained from sources considered to be reliable, but no guarantee of its accuracy is made by this company. In addition, no representation is made respecting zoning, condition of title, dimensions or any matters of a legal or environmental nature. Such matters should be referred to legal counsel for determination. Terms and conditions are subject to change without prior notice. Subject to errors and omissions.

SUITE 200



PHOTOS



EMMETT CAHILL
619.243.8470
ecahill@qfcre.com
BRE #02033604

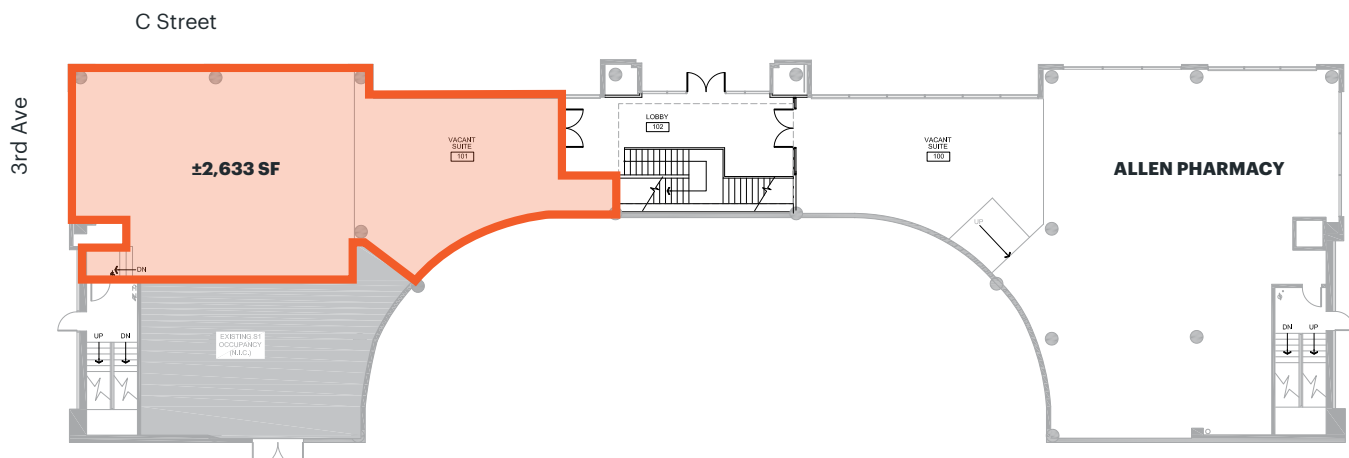
PETER WRIGHT
619.243.8450
pwright@qfcre.com
BRE #01846272

DOMINICK MARTINEZ
619.243.8468
dmartinez@qfcre.com
BRE #02191570

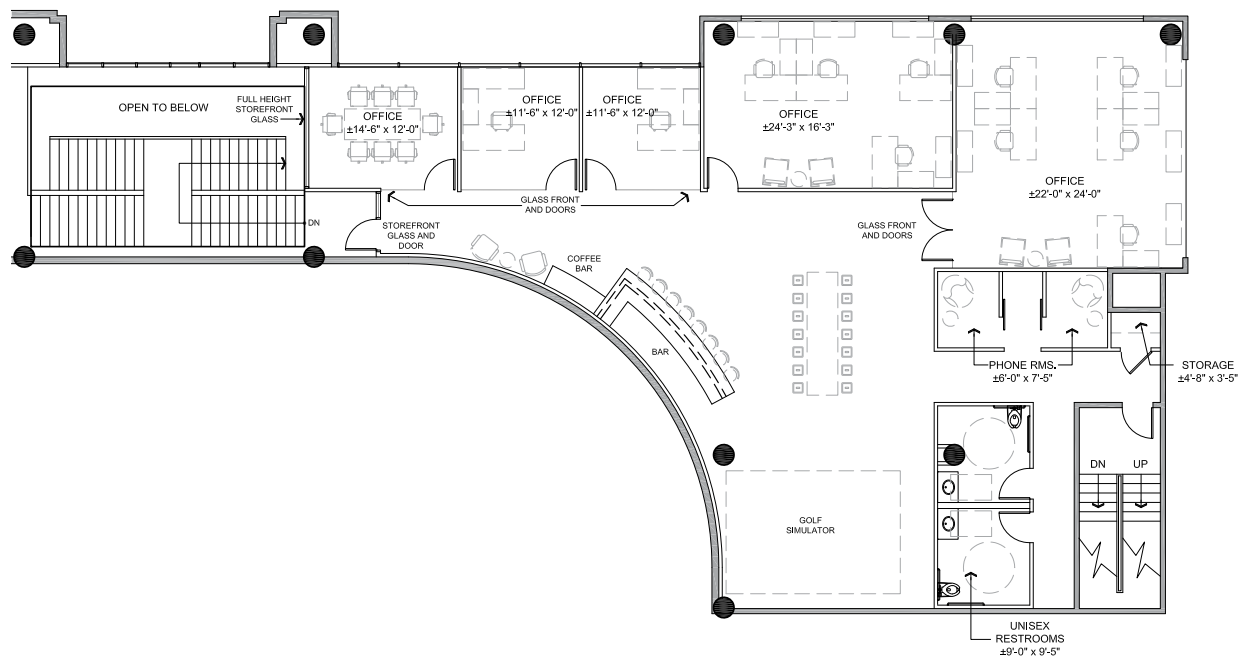
The information contained here has been obtained from sources considered to be reliable, but no guarantee of its accuracy is made by this company. In addition, no representation is made respecting zoning, condition of title, dimensions or any matters of a legal or environmental nature. Such matters should be referred to legal counsel for determination. Terms and conditions are subject to change without prior notice. Subject to errors and omissions.

SITE PLAN

SUITE 101



SUITE 200



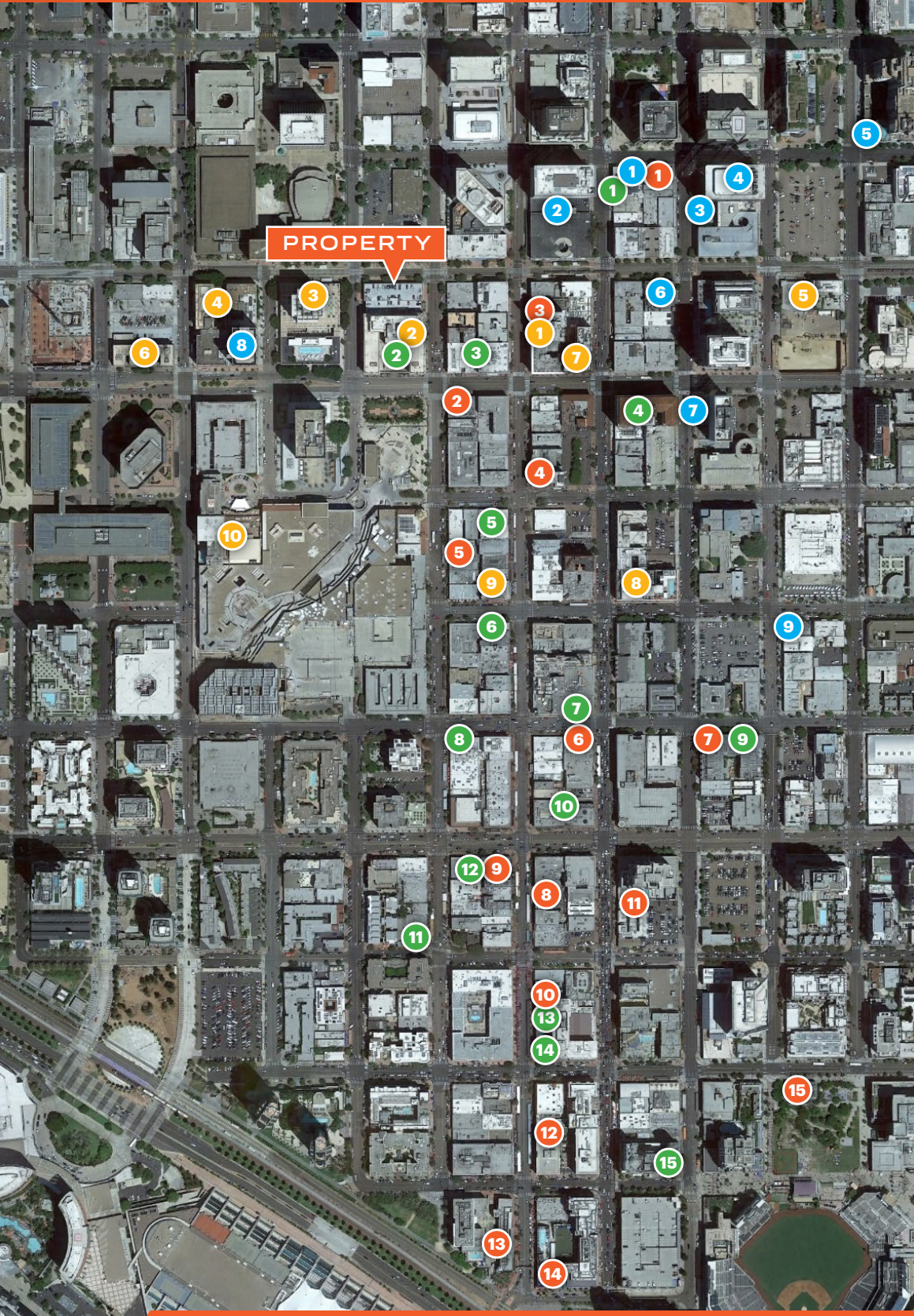
EMMETT CAHILL
619.243.8470
ecahill@qfcre.com
BRE #02033604

PETER WRIGHT
619.243.8450
pwright@qfcre.com
BRE #01846272

DOMINICK MARTINEZ
619.243.8468
dmartinez@qfcre.com
BRE #02191570

The information contained here has been obtained from sources considered to be reliable, but no guarantee of its accuracy is made by this company. In addition, no representation is made respecting zoning, condition of title, dimensions or any matters of a legal or environmental nature. Such matters should be referred to legal counsel for determination. Terms and conditions are subject to change without prior notice. Subject to errors and omissions.

NEARBY AMENITIES



RESTAURANTS

1. Donut Bar
2. Gaslamp Fish House
3. Curadero
4. Melting Pot
5. Bandar Restaurant
6. Fogo de Chao
7. Breakfast Republic
8. Rustic Root
9. El Chingon
10. Lionfish
11. The Nolen
12. Cafe Sevilla
13. Lou & Mickey's
14. Nobu
15. Social Tap

HOTELS

1. Kimpton Hotel
2. The US Grant
3. The Westgate Hotel
4. The Bristol Hotel
5. Hotel Churchill
6. The Sofia Hotel
7. Courtyard Marriott
8. Andaz San Diego
9. The Keating Hotel
10. The Westin

BARS & BREWPUBS

1. Stout Public House
2. Rendezvous
3. Phantom Lounge
4. Parq
5. Gaslamp Tavern
6. Atomic
7. 5th & Sky
8. Tin Roof
9. Noble Experiment
10. Side Bar
11. Fluxx
12. Prohibition
13. The Pool House
14. Fifth and Rose
15. Altitude

COFFEE

1. Starbucks
2. 401 Brew Street
3. Coffee N' Talk
4. 7 Cafe
5. Little Owl Coffee
6. Organo Gold
7. The Bean Box
8. Blue Bottle Coffee
9. Tired Eyes Coffee

EMMETT CAHILL
619.243.8470
ecahill@qfcre.com
BRE #02033604

PETER WRIGHT
619.243.8450
pwright@qfcre.com
BRE #01846272

DOMINICK MARTINEZ
619.243.8468
dmartinez@qfcre.com
BRE #02191570

The information contained here has been obtained from sources considered to be reliable, but no guarantee of its accuracy is made by this company. In addition, no representation is made respecting zoning, condition of title, dimensions or any matters of a legal or environmental nature. Such matters should be referred to legal counsel for determination. Terms and conditions are subject to change without prior notice. Subject to errors and omissions.

DOWNTOWN ACTIVATION

PROPERTY

RADD

\$1.5 billion life science campus

1.6M square feet

4,000 high paying jobs

Campus at Horton

\$1.8 billion annual regional economic activity

2,200 parking spaces

4,000 high paying jobs

Seaport Village

\$1.6 billion project

70 acres of shops and space

13 eateries

Convention Center

5,000 square foot pavilion

730,000 SF expansion of Center

3,000 person occupancy

EMMETT CAHILL

619.243.8470
ecahill@qfcre.com
BRE #02033604

PETER WRIGHT

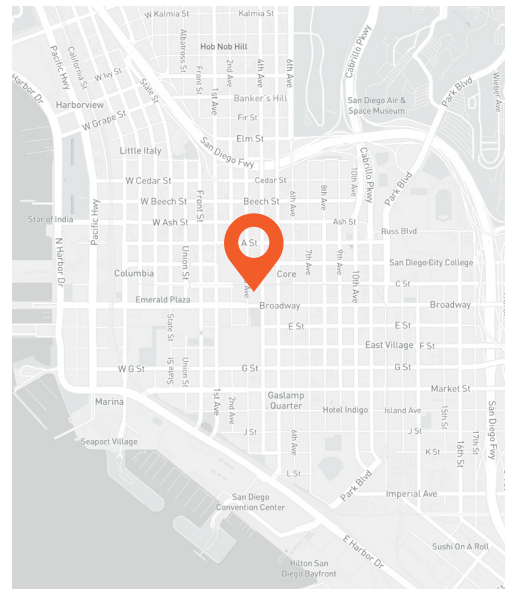
619.243.8450
pwright@qfcre.com
BRE #01846272

DOMINICK MARTINEZ

619.243.8468
dmartinez@qfcre.com
BRE #02191570

The information contained here has been obtained from sources considered to be reliable, but no guarantee of its accuracy is made by this company. In addition, no representation is made respecting zoning, condition of title, dimensions or any matters of a legal or environmental nature. Such matters should be referred to legal counsel for determination. Terms and conditions are subject to change without prior notice. Subject to errors and omissions.

LOCATION



- Located on the Trolley Line, that extends to USCD and UTC - over 17 million annual riders
- One block to Campus at Horton redevelopment – the largest adaptive reuse project in the US
- Dense population with 95,000 employees and 103,000 residents

WALKING DISTANCE

to numerous restaurants & retail

STEPS

to Petco Park & trolley station

EMMETT CAHILL
619.243.8470
ecahill@qfcre.com
BRE #02033604

PETER WRIGHT
619.243.8450
pwright@qfcre.com
BRE #01846272

DOMINICK MARTINEZ
619.243.8468
dmartinez@qfcre.com
BRE #02191570

The information contained here has been obtained from sources considered to be reliable, but no guarantee of its accuracy is made by this company. In addition, no representation is made respecting zoning, condition of title, dimensions or any matters of a legal or environmental nature. Such matters should be referred to legal counsel for determination. Terms and conditions are subject to change without prior notice. Subject to errors and omissions.

FOR LEASE

The Julia

333 C Street, San Diego, CA 92101



Contact Information

QFC REAL ESTATE

1495 Pacific Highway, Suite 450
San Diego, CA 92101
619.243.8454 • qfcre.com

EMMETT CAHILL

619.243.8470
ecahill@qfcre.com
BRE #02033604

DOMINICK MARTINEZ

619.243.8468
dmartinez@qfcre.com
BRE #02191570

The information contained here has been obtained from sources considered to be reliable, but no guarantee of its accuracy is made by this company. In addition, no representation is made respecting zoning, condition of title, dimensions or any matters of a legal or environmental nature. Such matters should be referred to legal counsel for determination. Terms and conditions are subject to change without prior notice. Subject to errors and omissions.