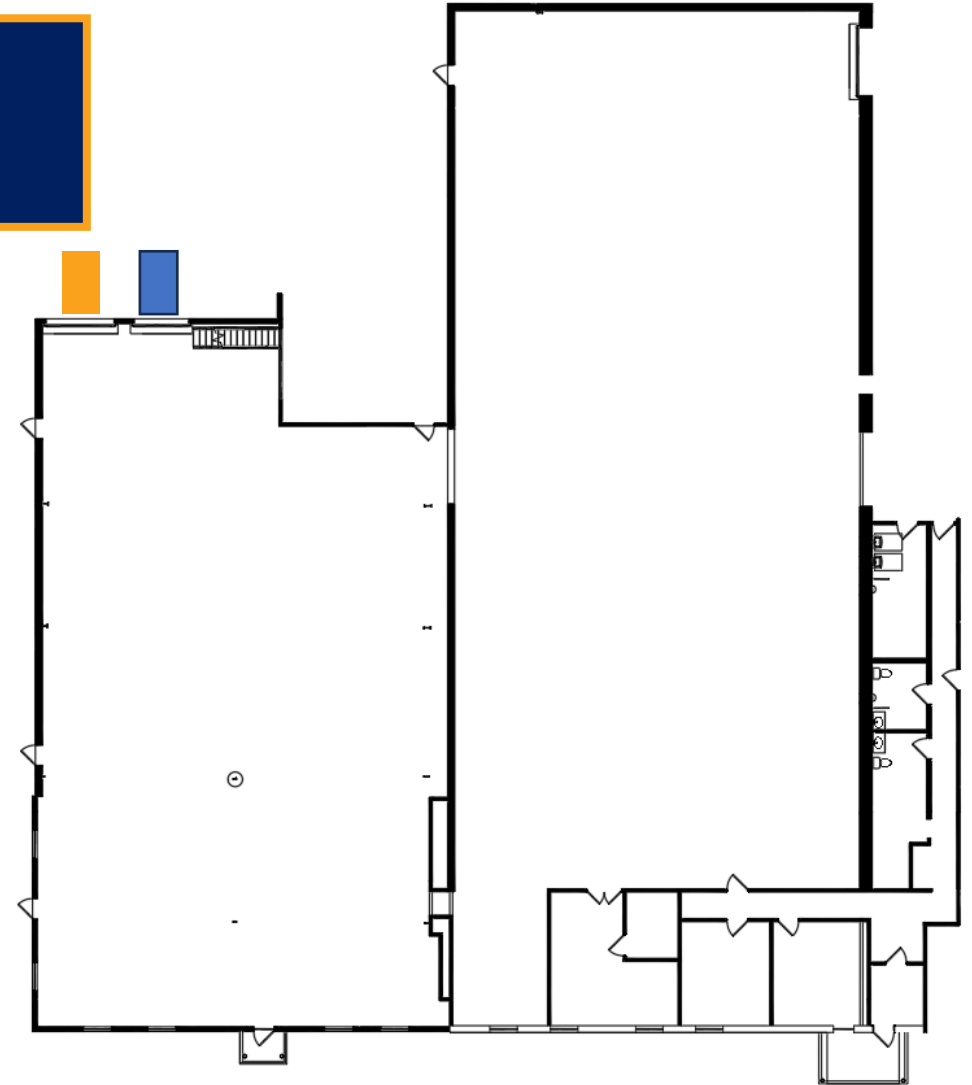
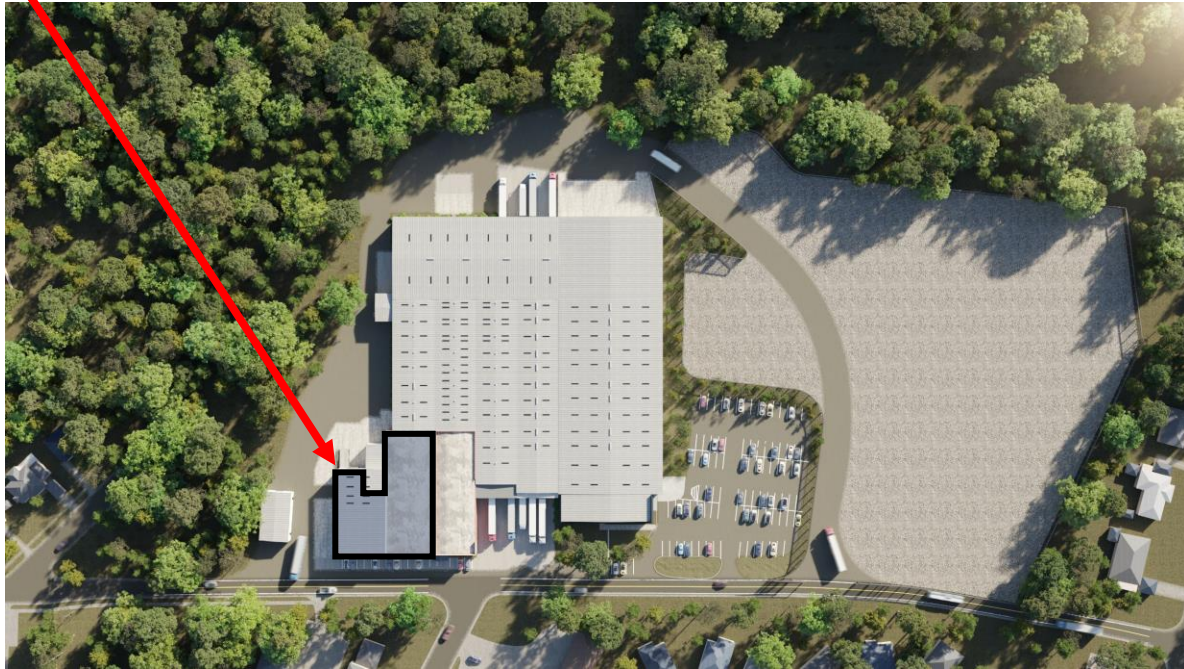


FLOOR PLAN

- Square Feet Total: ~ 16,000 SF
- Base Rent: \$
- TICAM: \$1.50/SF
- Loading Dock: 1
- Ramp: 1

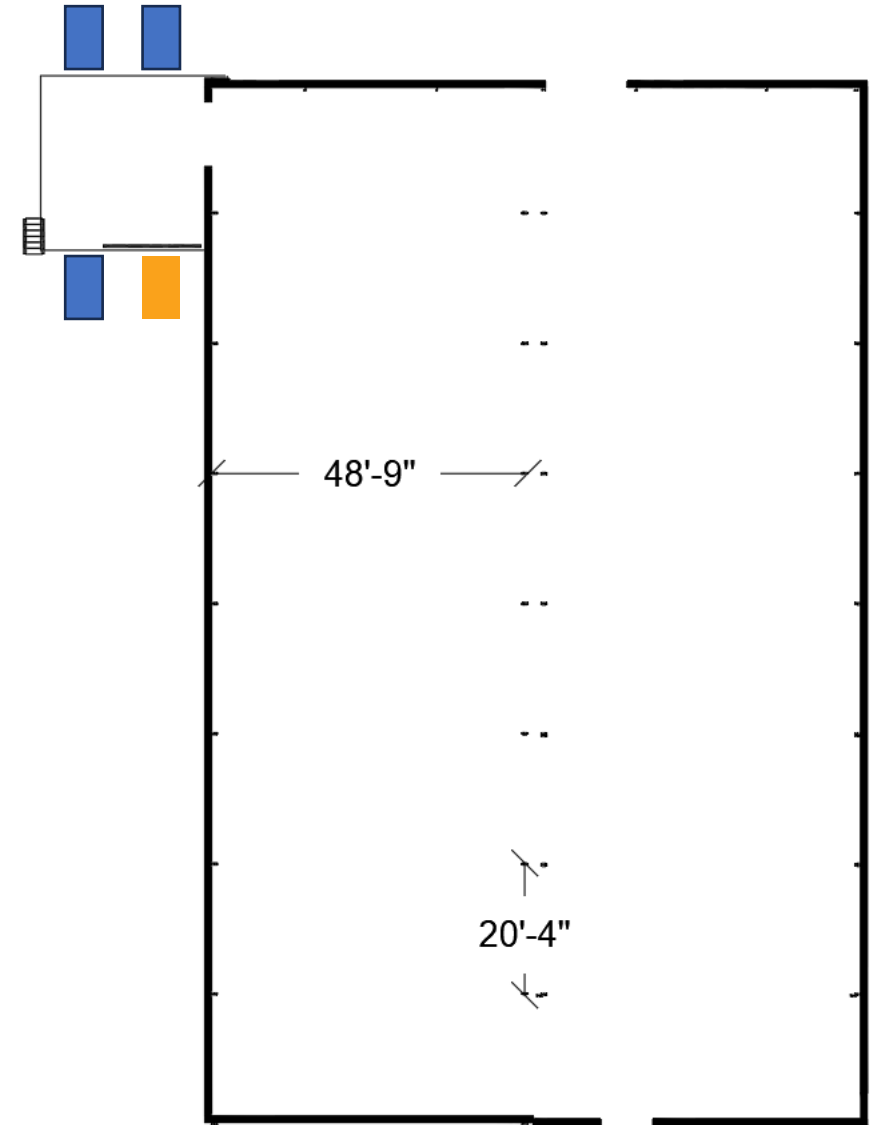
- Loading Dock
- Ramp



FLOOR PLAN

- Square Feet Total: ~ 17,600 SF
- Base Rent: \$
- TICAM: \$1.50/SF
- Loading Docks: 3
- Ramp: 1

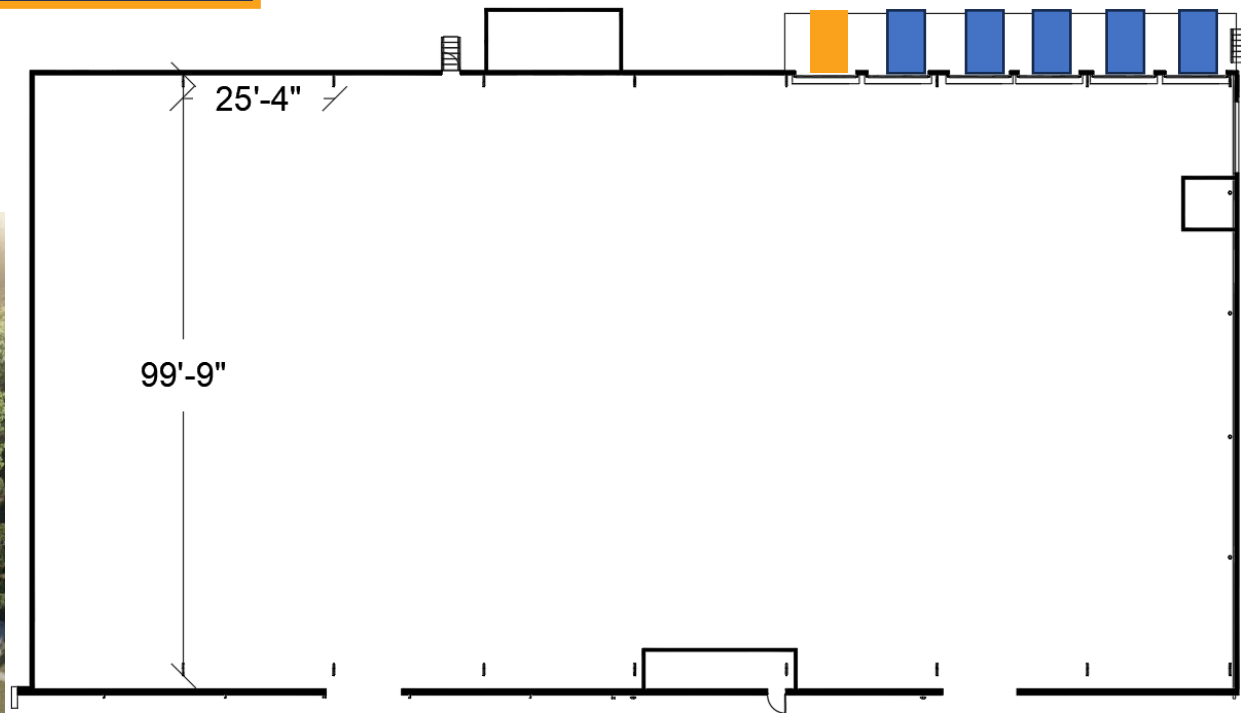
- Loading Dock
- Ramp



FLOOR PLAN

- Square Feet Total: ~ 22,550 SF
- Base Rent: \$
- TICAM: \$1.50/SF
- Loading Docks: 5
- Ramp: 1

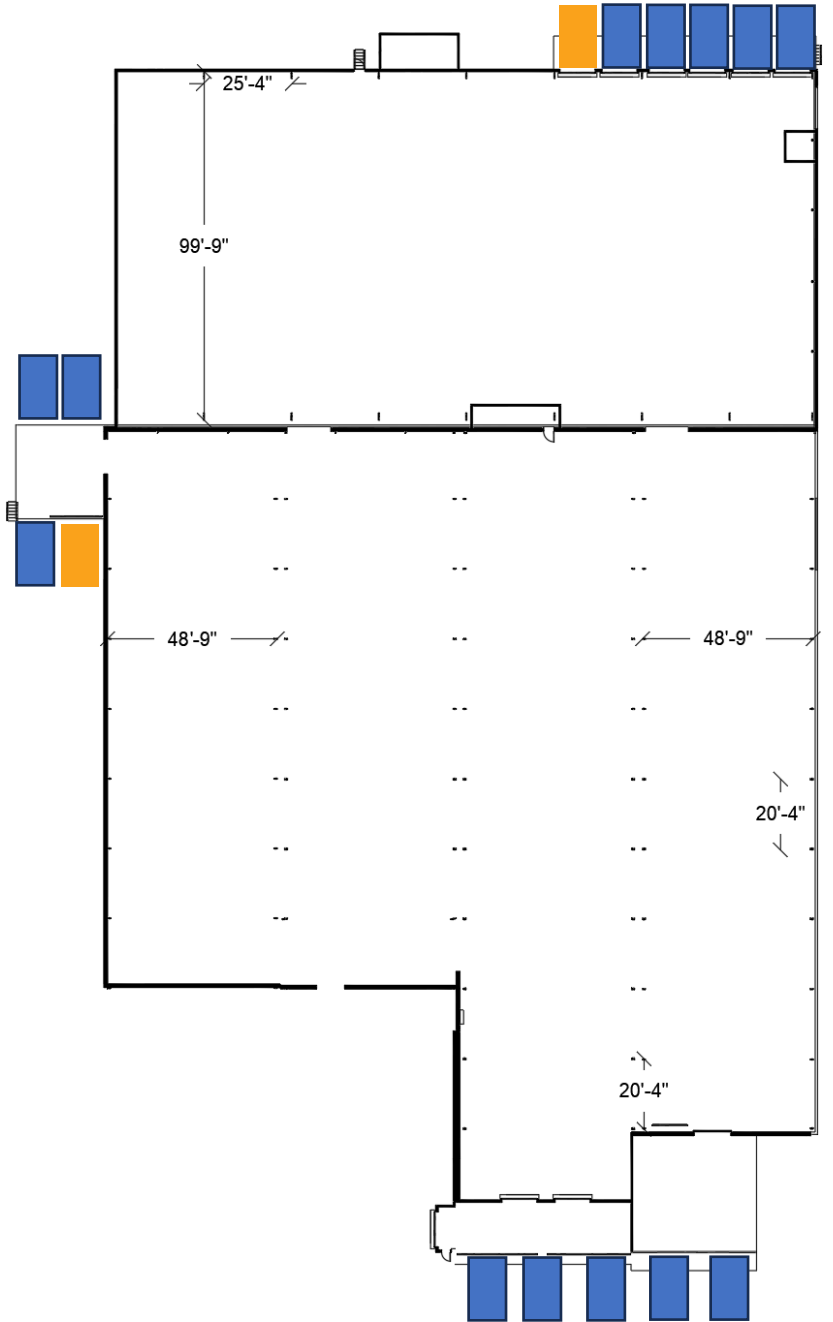
- Loading Dock
- Ramp



FLOOR PLAN

- Square Feet Total: ~ 42,750 SF
- Base Rent: \$
- TICAM: \$1.50/SF
- Loading Docks: 14
- Ramps: 2

■ Loading Dock
■ Ramp



FLOOR PLAN

- Square Feet Total: ~ 85,000 SF
- Base Rent: \$
- TICAM: \$1.50/SF
- Loading Docks: 15
- Ramps: 2

■ Loading Dock
■ Ramp

