

Lincoln Square / Westin Building

Premier Office Opportunity

LINCOLN SQUARE

600 Bellevue Way NE | Bellevue, Washington

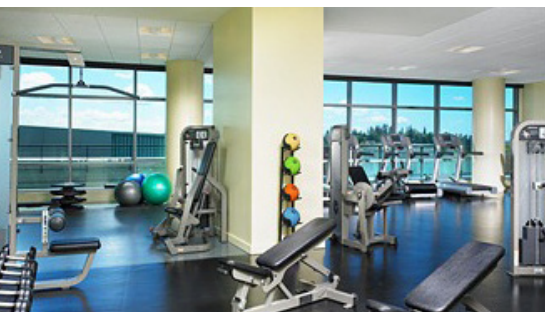
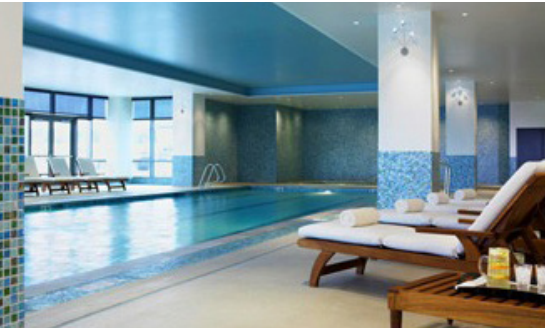


2nd Floor – High Ceiling Open Plenum Space

- 15,345 RSF of office space (22.2% multi-tenant load)
- Unique loft office with ceiling as high as 16 feet in many areas, improved at a cost of over \$120.00 per RSF
- Available 12/1/17
- \$39.00 per RSF, NNN
- Parking 3/1,000 USF at \$195 per stall; direct elevator access from office to garage
- Fully cabled space, ready to be occupied
- Furnishings may be able to be purchased separately
- Enjoy an unmatched list of amenities, including:
 - » 337-room, ★★★★★ Westin Hotel
 - » New Sky bridge to Lincoln Square Expansion to pass directly by space entry
 - » Over 50 restaurants in the project – connected by Sky bridge; direct connection to Bellevue Square/Bellevue Place
 - » On the Bellevue pedestrian corridor which connects to Bellevue Transit Center
 - » Ability to join Westin athletic club with swimming pool in the same building



Click here to view a 3D virtual tour of the space!



10500 NE 8th Street, Suite 900
Bellevue, Washington 98004
broderickgroup.com

BRODERICK
• GROUP •

Jim Kinerk
425.646.5221
kinerk@broderickgroup.com

Paul Sweeney
425.646.5225
sweeney@broderickgroup.com



Lincoln Square / Westin Building

Premier Office Opportunity

LINCOLN SQUARE

600 Bellevue Way NE | Bellevue, Washington

15,345 RSF of Office Space
2nd Floor – Westin Building



Jim Kinerk
425.646.5221
kinerk@broderickgroup.com

Paul Sweeney
425.646.5225
sweeney@broderickgroup.com



10500 NE 8th Street, Suite 900
Bellevue, Washington 98004
broderickgroup.com



Bellevue
Pedestrian
Corridor

Bellevue Square



1 FIRST FLOOR PLAN
1/8" = 1'-0"

Lincoln Square / Westin Building

Premier Office Opportunity

LINCOLN SQUARE

600 Bellevue Way NE | Bellevue, Washington

Overlooks Bellevue Way/Bellevue Square/Pedestrian Corridor

Suite Entrance



Built-In Reception Desk



Board Room



Kitchen / Break Area

High Ceilings/Common Area

Executive Office

Visitor Sitting

10500 NE 8th Street, Suite 900
Bellevue, Washington 98004
broderickgroup.com



Jim Kinerk
425.646.5221
kinerk@broderickgroup.com

Paul Sweeney
425.646.5225
sweeney@broderickgroup.com

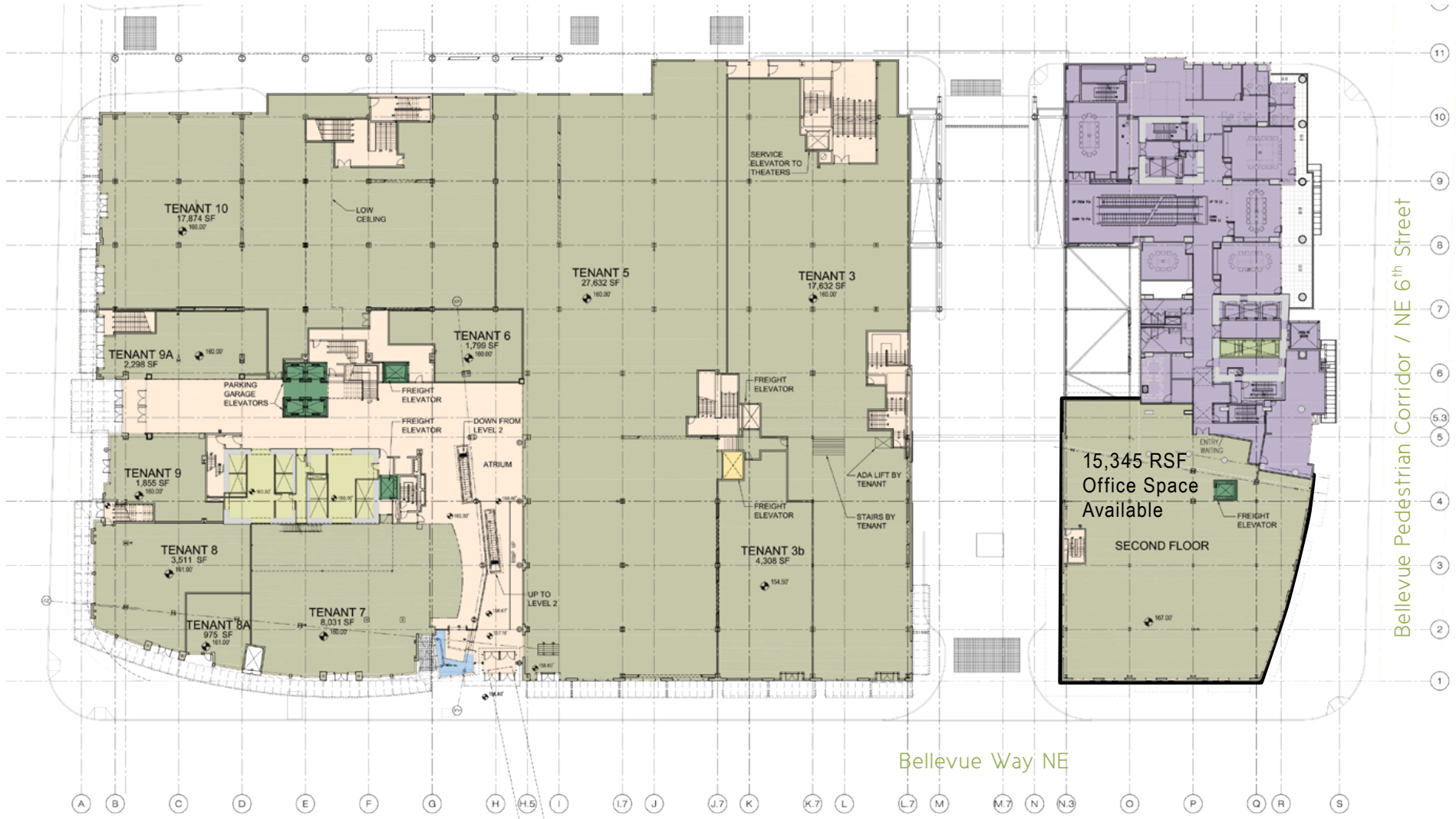


Lincoln Square / Westin Building

Premier Office Opportunity

LINCOLN SQUARE

600 Bellevue Way NE | Bellevue, Washington



LEVEL 1  

10500 NE 8th Street, Suite 900
Bellevue, Washington 98004
broderickgroup.com



Jim Kinerk
425.646.5221
kinerk@broderickgroup.com

Paul Sweeney
425.646.5225
sweeney@broderickgroup.com

