

# 61 BLUXOME STREET

FOR LEASE | RENOVATED BRICK & TIMBER FLEX BUILDING

**TCP**  
**TOUCHSTONE**  
COMMERCIAL PARTNERS



[WWW.TCPRE.COM](http://WWW.TCPRE.COM)

**ZACH HAUPERT** zhaupert@tcpre.com  
C 415.812.1219

**MICHAEL SANBERG** msanberg@tcpre.com  
C 415.697.6088

# 61 BLUXOME STREET

## PROPERTY SUMMARY

### ADDRESS

61 Bluxome Street, San Francisco, CA 94107

### AVAILABLE SPACE

Second Floor +/- 1,700 Square Feet

Ground Floor +/- 5,500 Square Feet

**TOTAL +/- 7,200 Square Feet**

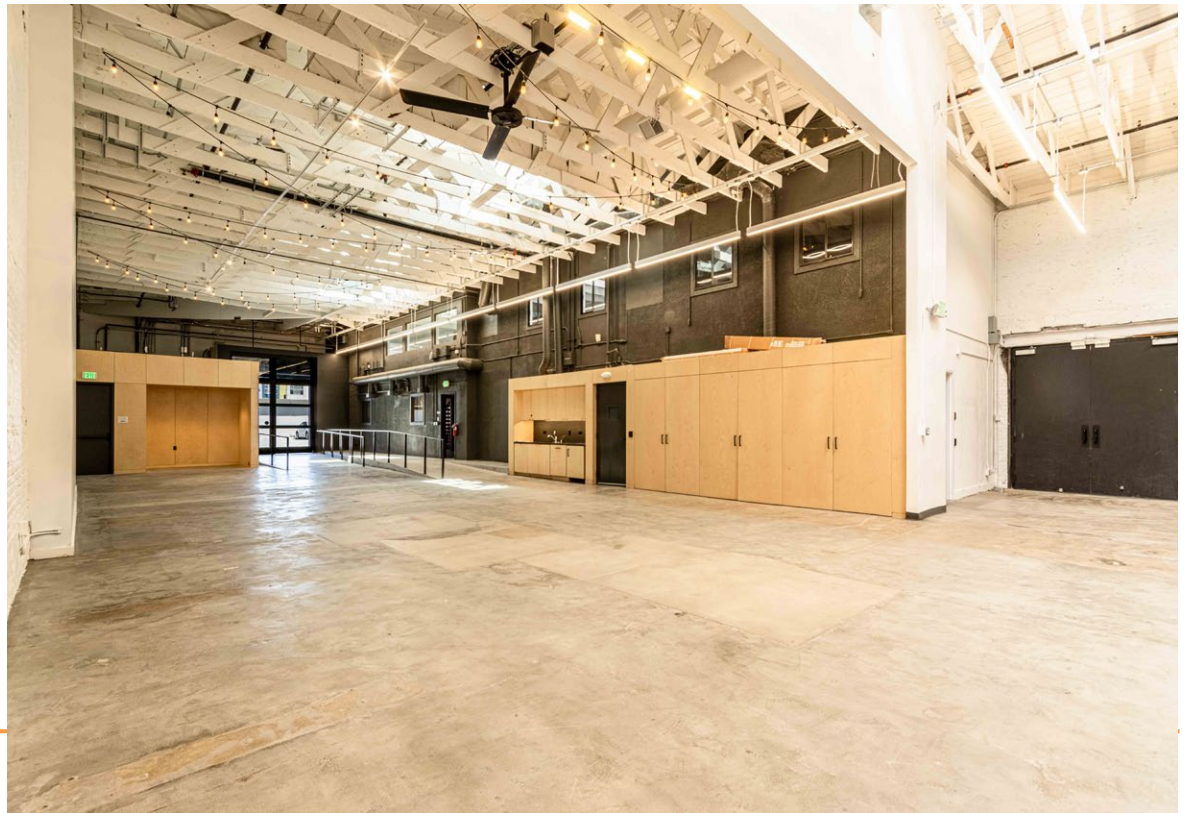
### RENTAL RATE

\$55 / Square Foot / Year, Industrial Gross

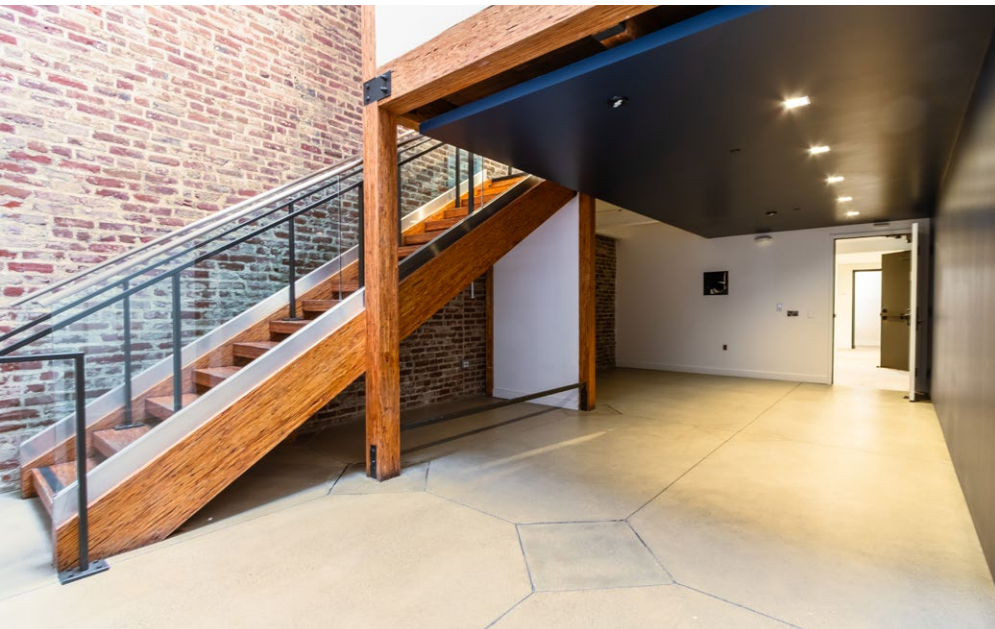
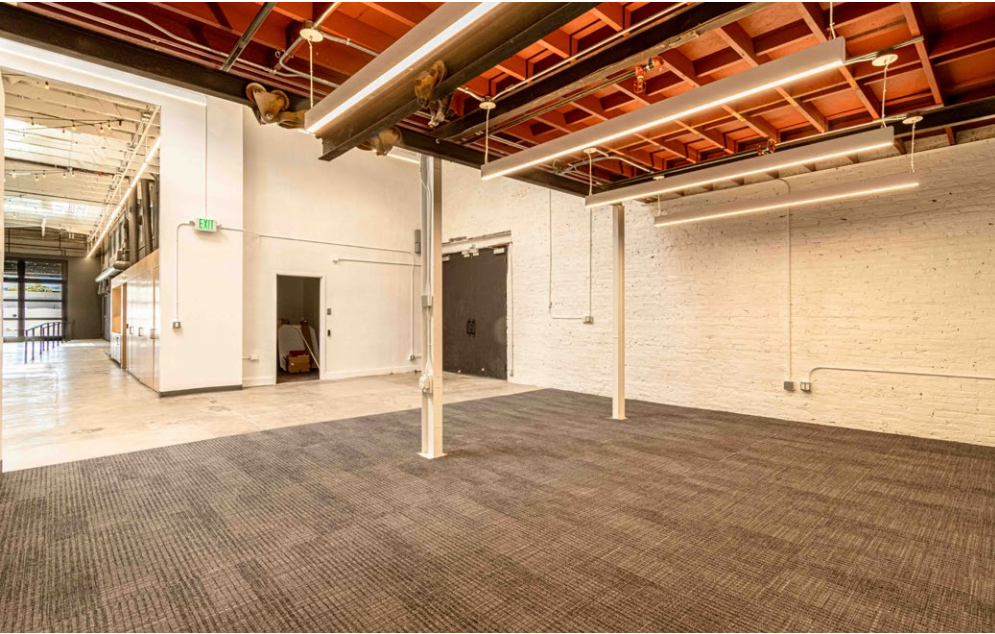


## BUILDING ATTRIBUTES

- + Newly Renovated w/ New Lighting, Polished Concrete Floors, & Updated Security System
- + One (1) Drive-In Roll-Up Door
- + One (1) Conference Room
- + Seven (7) Private Offices
- + Three (3) Private ADA Unisex Restrooms
- + 400 Amp / 3 Phase Electrical Service
- + Fully Sprinklered w/ HVAC
- + Beautiful Open Plan Kitchenette
- + Walkable To Bart, Caltrain, and SoMa Amenities



# 61 BLUXOME STREET

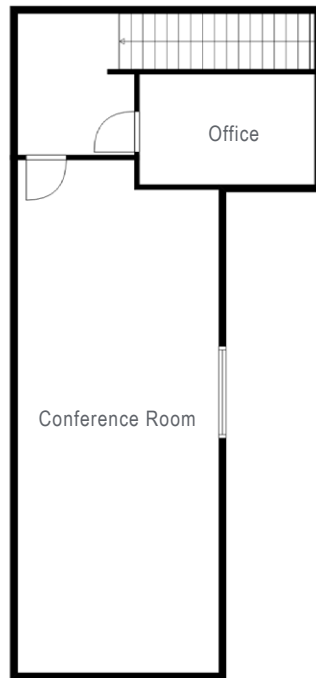


# 61 BLUXOME STREET

## Floor Plans

Second Floor

+/- 1,700 Square Feet



Back Second Floor



Front Second Floor

Bluxome Street

# 61 BLUXOME STREET

## Floor Plans

Ground Floor

+/- 5,500 Square Feet



Bluxome Street

# 61 BLUXOME STREET

## LOCATION OVERVIEW

Desirable South of Market location, walkable to nearby amenities, public transportation and to surrounding neighborhoods.



**04 MIN** to CalTrain  
**06 MIN** to 4th & King Muni  
**21 MIN** to Powell St Bart



**05 MIN** to Chase Center  
**07 MIN** to Union Square  
**10 MIN** to Financial District



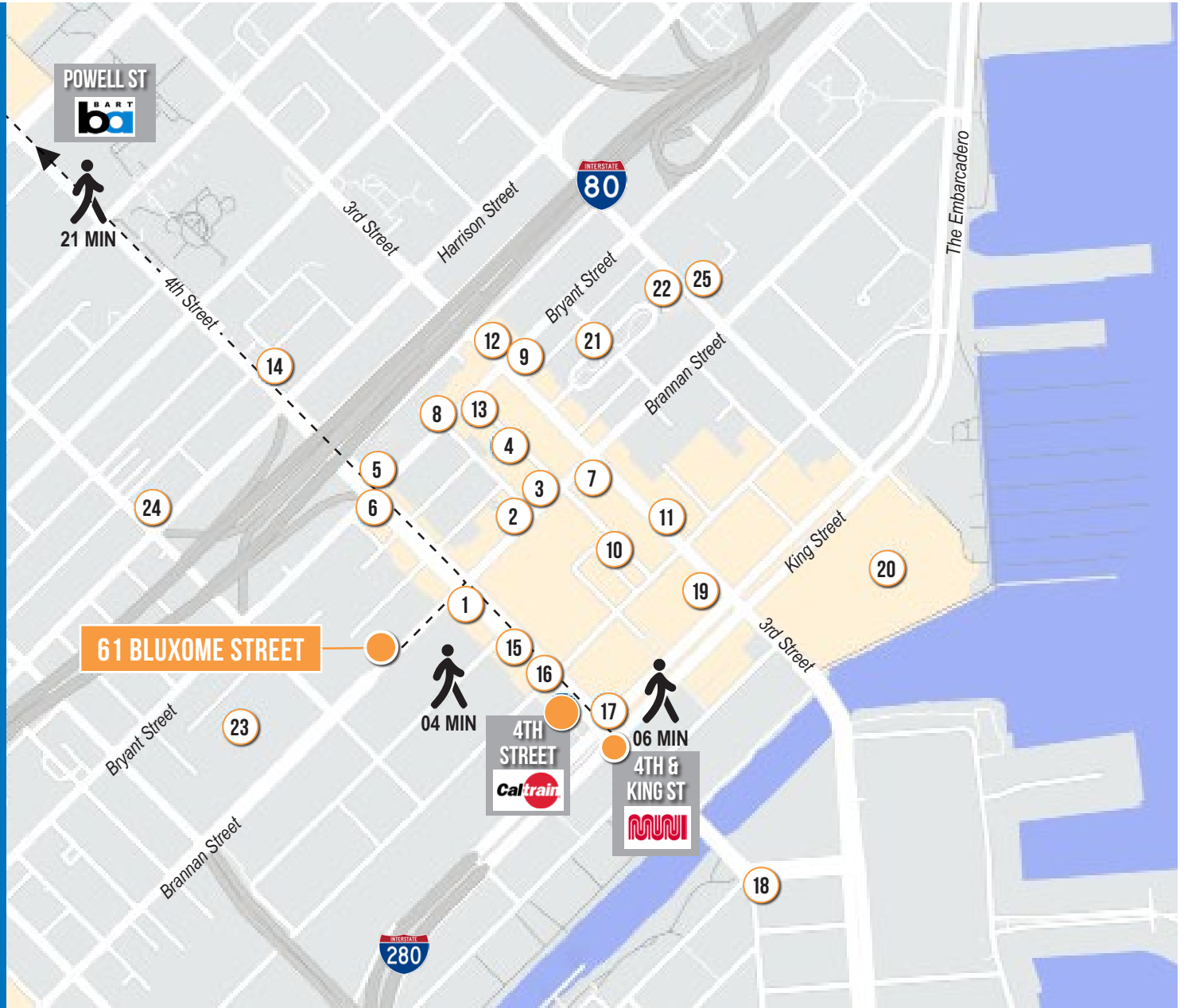
**02 MIN** to 80 On-Ramp  
**02 MIN** to 280 On-Ramp



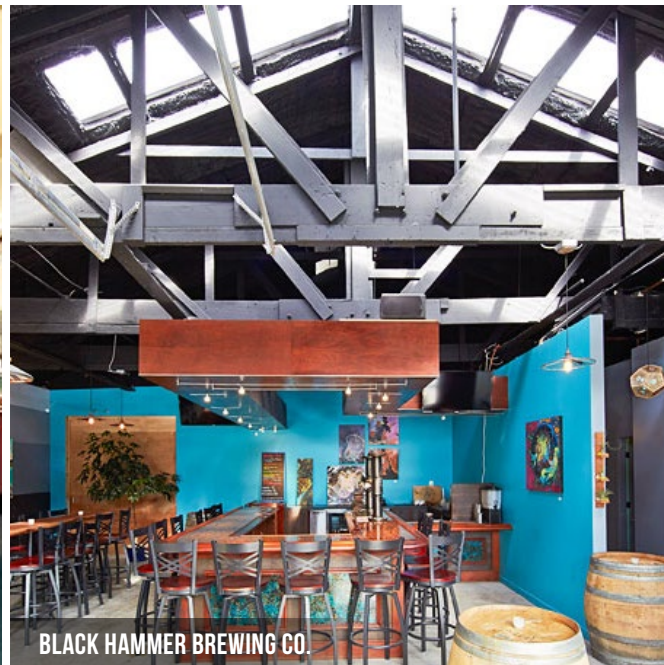
# 61 BLUXOME STREET

## NEARBY AMENITIES

- 1..... Marlowe
- 2..... Alexander's Steakhouse
- 3..... Brickhouse
- 4..... Wabi-Sabi
- 5..... Shell Gas Station
- 6..... The Hotel Utah Saloon
- 7..... Local Tap
- 8..... Black Hammer Brewing
- 9..... Flour & Branch
- 10..... Little Skillet
- 11..... Alchemist Bar & Lounge
- 12..... Garaje
- 13..... Lava Restaurant & Lounge
- 14..... Whole Foods Market
- 15..... The UPS Store
- 16..... Walgreens
- 17..... Safeway
- 18..... Gus's Community Market
- 19..... Lucky Strike SF
- 20..... Oracle Park
- 21..... Caffe Centro
- 22..... Blue Bottle Coffee
- 23..... SF Flower Mart
- 24..... All Star Donuts
- 25..... 21st Amendment Brewery



# 61 BLUXOME STREET



61 BLUXOME  
STREET



**TCP**  
**TOUCHSTONE**  
COMMERCIAL PARTNERS

Corp. Lic. 01112906  
www.tcpri.com

**ZACH HAUPERT**

C 415.812.1219

zauptert@tcpri.com DRE # 01822907

**MICHAEL SANBERG**

C 415.697.6088

msanberg@tcpri.com DRE # 01930041

This document has been prepared by Touchstone Commercial Partners for advertising and general information only. Touchstone Commercial Partners makes no guarantees, representations or warranties of any kind, expressed or implied, regarding the information including, but not limited to, warranties of content, accuracy and reliability. Any interested party should undertake their own inquiries as to the accuracy of the information. Touchstone Commercial Partners excludes unequivocally all inferred or implied terms, conditions and warranties arising out of this document and excludes all liability for loss and damages arising there from. This publication is the copyrighted property of Touchstone Commercial Partners and/or its licensor(s). ©2026. All rights reserved.