



CENTRAL REALTY PARTNERS

Central Realty Partners - Commercial Real Estate  
5412 Hwy 317  
Belton, TX 76513  
www.centralrealtypartners.com

Scott Motsinger  
254.791.8700 (O)  
254.931.5636 (C)  
smotsinger@centralpre.com



## 2,700sf Office/Warehouse for Lease 11244 W hwy 36 Moffat, TX 76502

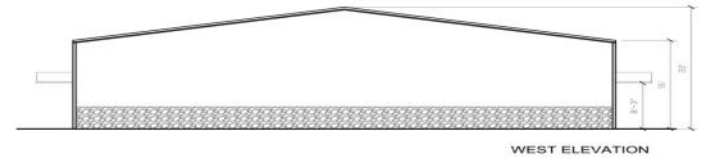
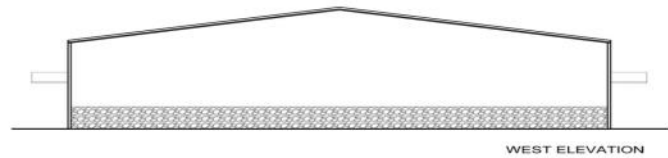
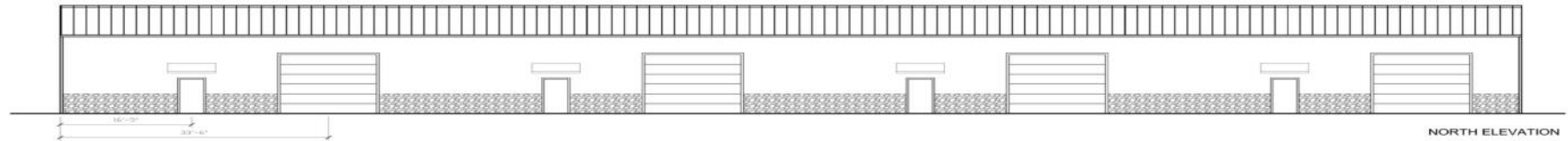
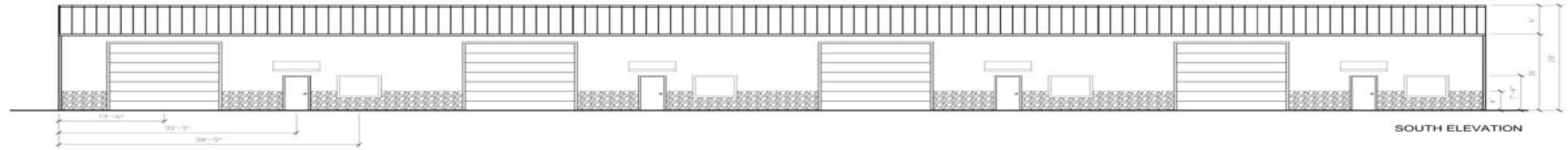
**DISCLAIMER:** All information contained herein is subject to change without notice. Central Realty Partners (nor its affiliates, employees representatives and managers) does not make any warranties as to the accuracy of the information contained herein. The information contained in this summary was obtained under "good faith" from sources deemed to be reliable. All prospective purchasers or tenants are encouraged to conduct their own independent investigations regarding this project and the information contained herein.



CENTRAL REALTY PARTNERS

Central Realty Partners - Commercial Real Estate  
5412 Hwy 317  
Belton, TX 76513  
www.centralrealtypartners.com

Scott Motsinger  
254.791.8700 (O)  
254.931.5636 (C)  
smotsinger@centralpre.com



HWY 36 & FM4209 ELEVATIONS

## Details

Total size: 11,135sf

Minimum size: 2,700

Acreage: 1.19

Side wall height: 16 foot

Grade level Doors: (Front) 10' X14' (Rear)12' X 12'

Center Height: 22'

Completion Date: June 2020

## UTILITIES

Water: 2 meters (Moffat Water Supply)

Electric: 1 meters (Heart of Texas) 3phase available

Sewer: 1 Septic systems

## ZONING

No Zoning: Just outside the city limits of Temple TX

## LEASE RATE:

**\$0.70 PSF PER MONTH**

**NNN 2.00 PER YEAR**

**DISCLAIMER:** All information contained herein is subject to change without notice. Central Realty Partners (nor its affiliates, employees representatives and managers) does not make any warranties as to the accuracy of the information contained herein. The information contained in this summary was obtained under "good faith" from sources deemed to be reliable. All prospective purchasers or tenants are encouraged to conduct their own independent investigations regarding this project and the information contained herein.

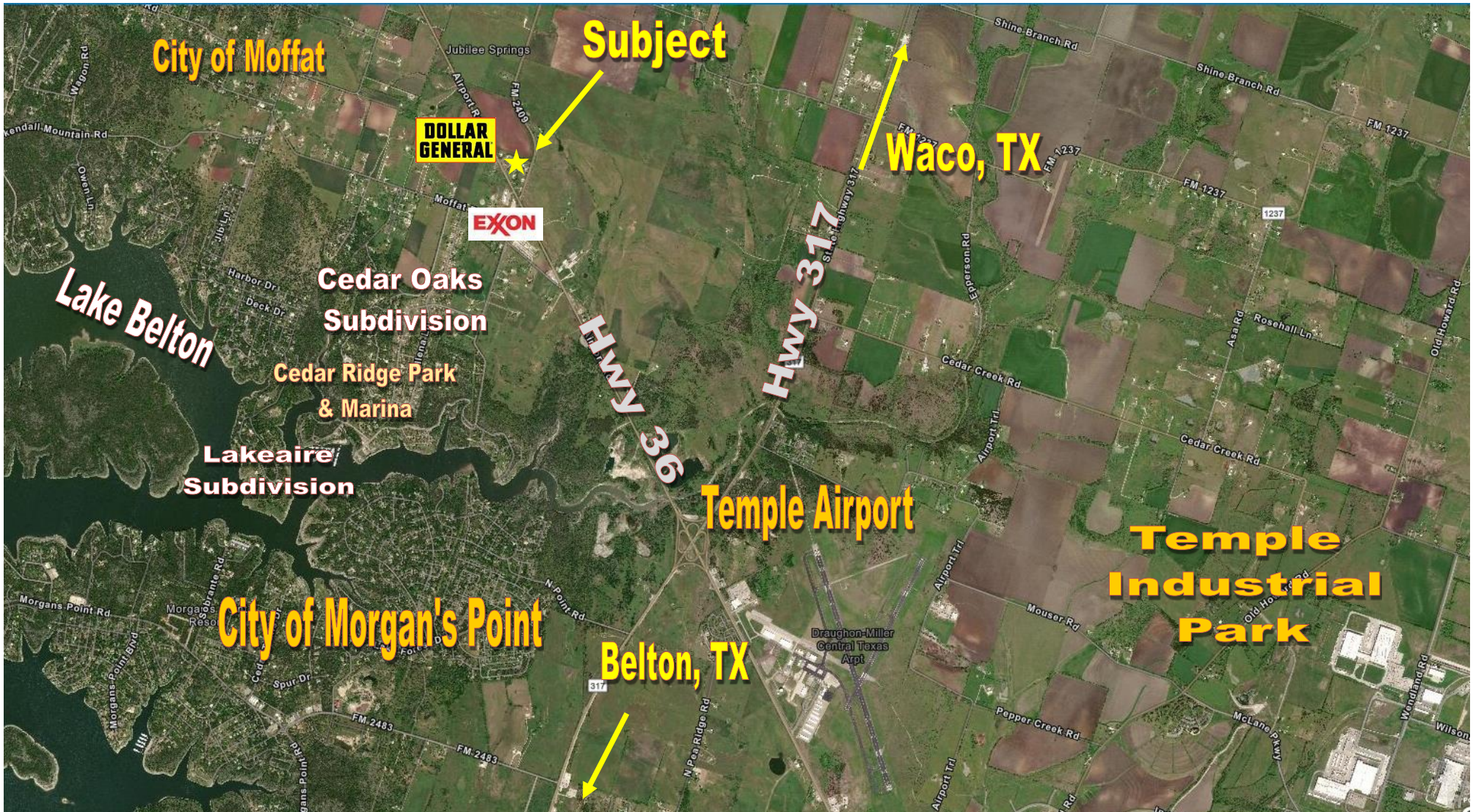


CENTRAL REALTY PARTNERS

Central Realty Partners - Commercial Real Estate  
5412 Hwy 317  
Belton, TX 76513  
www.centralrealtypartners.com

Scott Motsinger  
254.791.8700 (O)  
254.931.5636 (C)  
smotsinger@centralpre.com

## Location



**DISCLAIMER:** All information contained herein is subject to change without notice. Central Realty Partners (nor its affiliates, employees representatives and managers) does not make any warranties as to the accuracy of the information contained herein. The information contained in this summary was obtained under "good faith" from sources deemed to be reliable. All prospective purchasers or tenants are encouraged to conduct their own independent investigations regarding this project and the information contained herein.

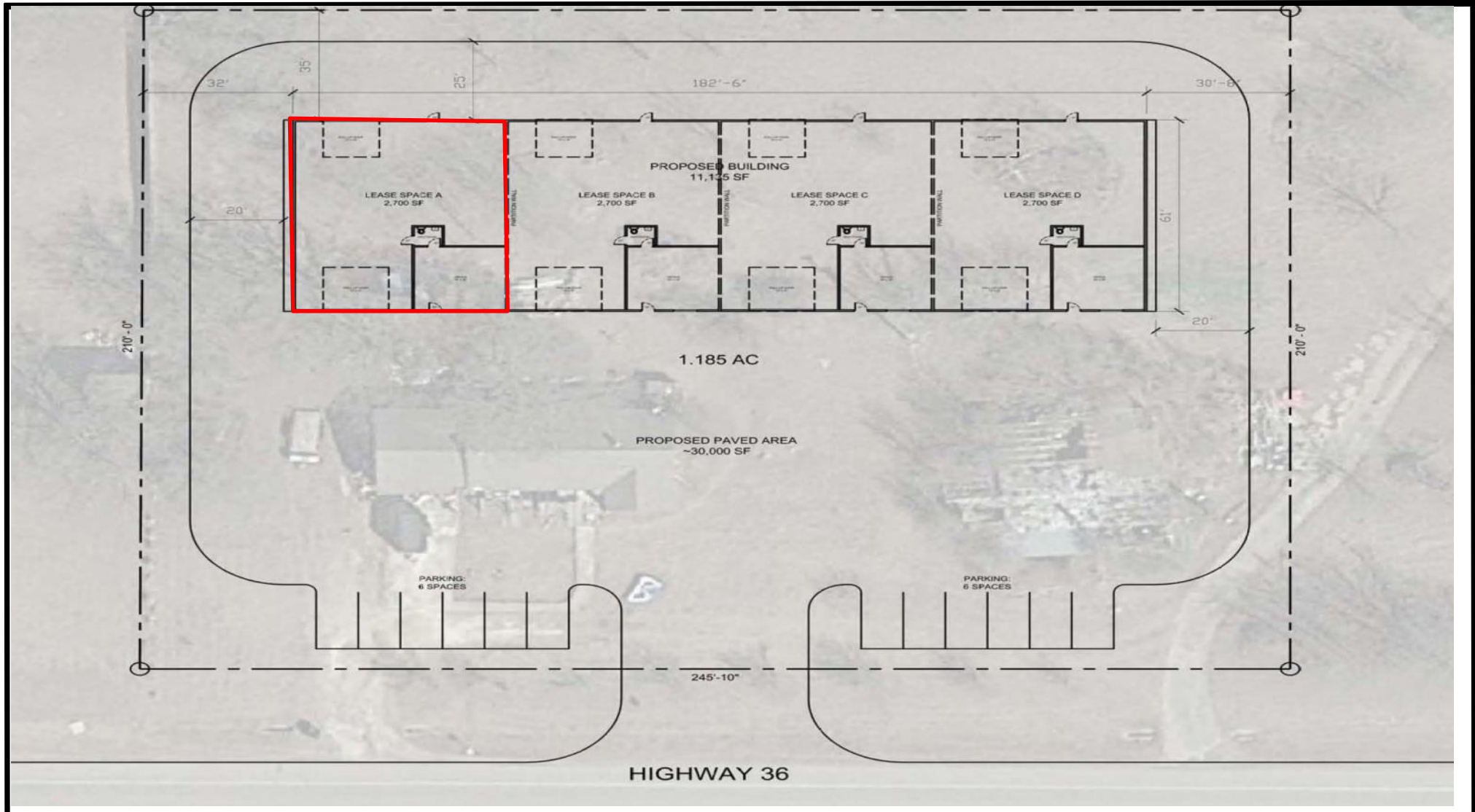


CENTRAL REALTY PARTNERS

Central Realty Partners - Commercial Real Estate  
5412 Hwy 317  
Belton, TX 76513  
www.centralrealtypartners.com

Scott Motsinger  
254.791.8700 (O)  
254.931.5636 (C)  
smotsinger@centralpre.com

## Site plan



**DISCLAIMER:** All information contained herein is subject to change without notice. Central Realty Partners (nor its affiliates, employees representatives and managers) does not make any warranties as to the accuracy of the information contained herein. The information contained in this summary was obtained under "good faith" from sources deemed to be reliable. All prospective purchasers or tenants are encouraged to conduct their own independent investigations regarding this project and the information contained herein.



# Information About Brokerage Services

11-2-2015

Texas law requires all real estate license holders to give the following information about brokerage services to prospective buyers, tenants, sellers and landlords.

## TYPES OF REAL ESTATE LICENSE HOLDERS:

- A **BROKER** is responsible for all brokerage activities, including acts performed by sales agents sponsored by the broker.
- A **SALES AGENT** must be sponsored by a broker and works with clients on behalf of the broker.

## A BROKER'S MINIMUM DUTIES REQUIRED BY LAW (A client is the person or party that the broker represents):

- Put the interests of the client above all others, including the broker's own interests;
- Inform the client of any material information about the property or transaction received by the broker;
- Answer the client's questions and present any offer to or counter-offer from the client; and
- Treat all parties to a real estate transaction honestly and fairly.

## A LICENSE HOLDER CAN REPRESENT A PARTY IN A REAL ESTATE TRANSACTION:

**AS AGENT FOR OWNER (SELLER/LANDLORD):** The broker becomes the property owner's agent through an agreement with the owner, usually in a written listing to sell or property management agreement. An owner's agent must perform the broker's minimum duties above and must inform the owner of any material information about the property or transaction known by the agent, including information disclosed to the agent or subagent by the buyer or buyer's agent.

**AS AGENT FOR BUYER/TENANT:** The broker becomes the buyer/tenant's agent by agreeing to represent the buyer, usually through a written representation agreement. A buyer's agent must perform the broker's minimum duties above and must inform the buyer of any material information about the property or transaction known by the agent, including information disclosed to the agent by the seller or seller's agent.

**AS AGENT FOR BOTH - INTERMEDIARY:** To act as an intermediary between the parties the broker must first obtain the written agreement of *each party* to the transaction. The written agreement must state who will pay the broker and, in conspicuous bold or underlined print, set forth the broker's obligations as an intermediary. A broker who acts as an intermediary:

- Must treat all parties to the transaction impartially and fairly;
- May, with the parties' written consent, appoint a different license holder associated with the broker to each party (owner and buyer) to communicate with, provide opinions and advice to, and carry out the instructions of each party to the transaction.
- Must not, unless specifically authorized in writing to do so by the party, disclose:
  - that the owner will accept a price less than the written asking price;
  - that the buyer/tenant will pay a price greater than the price submitted in a written offer; and
  - any confidential information or any other information that a party specifically instructs the broker in writing not to disclose, unless required to do so by law.

**AS SUBAGENT:** A license holder acts as a subagent when aiding a buyer in a transaction without an agreement to represent the buyer. A subagent can assist the buyer but does not represent the buyer and must place the interests of the owner first.

## TO AVOID DISPUTES, ALL AGREEMENTS BETWEEN YOU AND A BROKER SHOULD BE IN WRITING AND CLEARLY ESTABLISH:

- The broker's duties and responsibilities to you, and your obligations under the representation agreement.
- Who will pay the broker for services provided to you, when payment will be made and how the payment will be calculated.

**LICENSE HOLDER CONTACT INFORMATION:** This notice is being provided for information purposes. It does not create an obligation for you to use the broker's services. Please acknowledge receipt of this notice below and retain a copy for your records.

**Temple Executive Realty dba  
Central Realty Partners** License No. **575472** Email **(254) 791-8700** Phone  
 Licensed Broker/Broker Firm Name or  
 Primary Assumed Business Name

**Scott T. Motsinger** License No. **526810** Email **smotsinger@centralrpre.com** Phone  
 Designated Broker of Firm

Licensed Supervisor of Sales Agent/  
 Associate License No. \_\_\_\_\_ Email \_\_\_\_\_ Phone \_\_\_\_\_

Sales Agent/Associate's Name License No. \_\_\_\_\_ Email \_\_\_\_\_ Phone \_\_\_\_\_

Buyer/Tenant/Seller/Landlord Initials \_\_\_\_\_

Date \_\_\_\_\_

Regulated by the Texas Real Estate Commission

TAR 2501

Central Realty Partners, 3500 SW HK Dodgen Loop Temple, TX 76504  
 Scott Motsinger

Phone: (254) 791 8700 Fax: 254-771 4120  
 Produced with zipForm® by zipLogix 18070 Fifteen Mile Road, Fraser, Michigan 48026 www.zipLogix.com

Information available at [www.trec.texas.gov](http://www.trec.texas.gov)

IABS 1-0  
 2501 Master