

Retail/Office Sublease Available



▶ 600 Queens Road

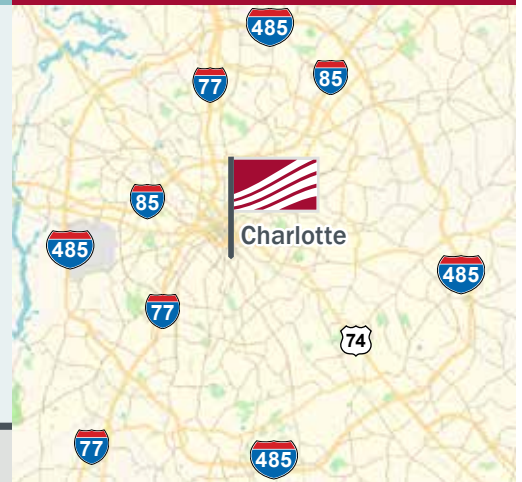
Charlotte, NC 28207



Retail/Office Space

- Opportunity to Sublease 1,002 SF in charming Myers Park home
- Own entrance/parking available
- Building has been recently remodeled, expected to finish in September 2019
- Close proximity to Myers Park, Midtown, Dilworth and Eastover
- Join Tribe Salon
- Ideal for interior design, art gallery, small office need

For Sublease



Pricing

Call for Pricing

Demographics	1 mile	3 mile	5 mile
2019 Population	12,718	123,014	277,212
2010 - 2019 Growth Rate	3.08%	3.00%	2.13%
2019 Avg. HH Income	\$144,779	\$117,606	\$96,366

▶ Contact

Robbie Adams
704.248.2108
radams@mpvre.com

Traffic Count	ADT
Queens Road	8,100

▶ Market Aerial

600 Queens Road
Charlotte, NC 28207

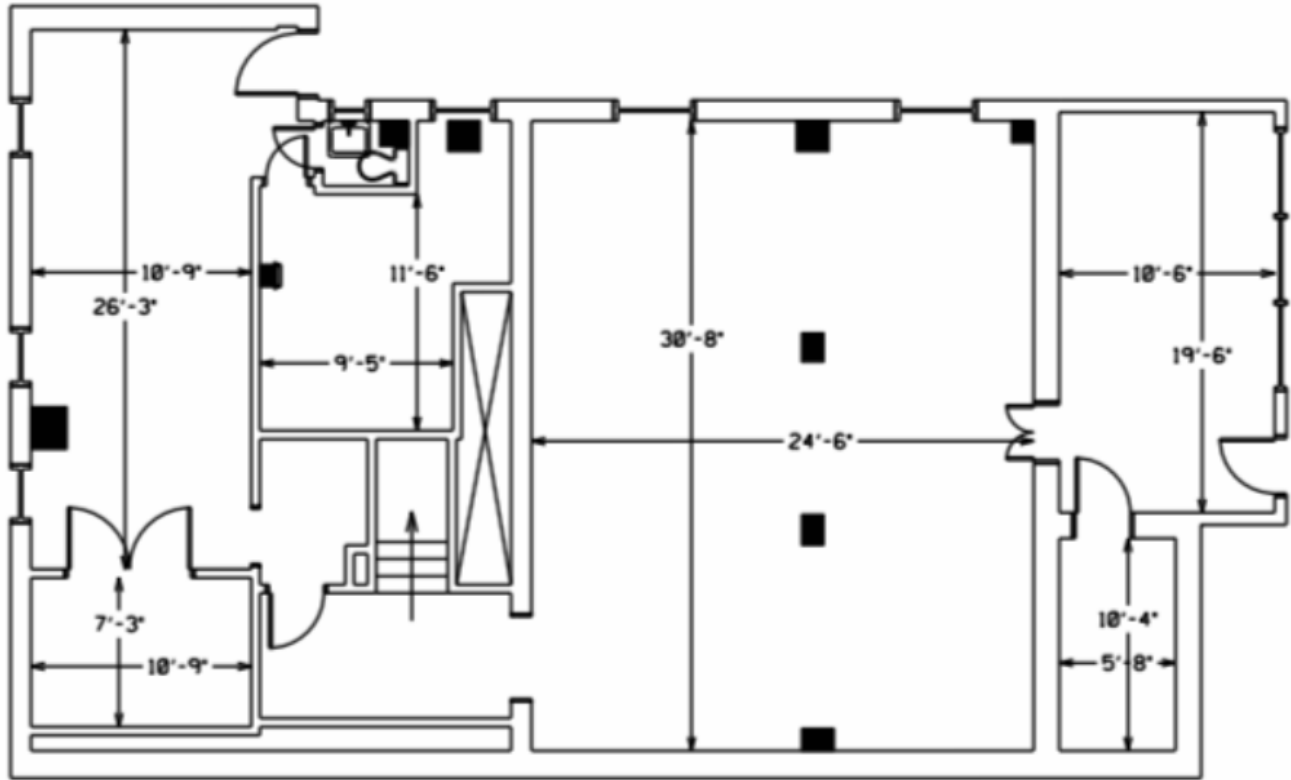


This GIS data is deemed reliable but provided "as is" without warranty of any representation of accuracy, timeliness, reliability or completeness. This map document does not represent a legal survey of the land and is for graphical purposes only. Use of this data for any purpose should be of acknowledgment of the limitations of the data, including the fact that the data is dynamic and is in a constant state of maintenance, correction, and update.

► Floor Plan & Images

600 Queens Road
Charlotte, NC 28207

±1,002 SF Available



For complete property listings, visit www.mpvre.com.



2400 South Blvd., Suite 300 Charlotte, NC 28203 mpvre.com