

FOR SALE

102,782 SF Industrial Campus on 10.416 Acres Available in Houma, LA



AVAILABLE FOR ~~\$4,700,000~~ **\$3,700,000**

205 E. WOODLAWN RANCH RD. HOUMA, TERREBONNE PARISH, LOUISIANA



1900 WEST LOOP SOUTH | SUITE 1300 | HOUSTON, TX 77027
PHONE: 713.270.7700 | WWW.TRANSWESTERN.COM



400 LAFAYETTE STREET | HOUMA, LA 70360
PHONE: 985.872.4597 | WWW.LOGANBABIN.COM

205 E. WOODLAWN RANCH RD.

INDUSTRIAL CAMPUS OPPORTUNITY:

BUILDING AREA: 102,782 SF in 5 Buildings
LAND: 10.416 Acres
YEAR BUILT: 1977
PRICE: ~~\$4,700,000~~ **\$3,700,000**

PROPERTY SPECIFICATIONS:

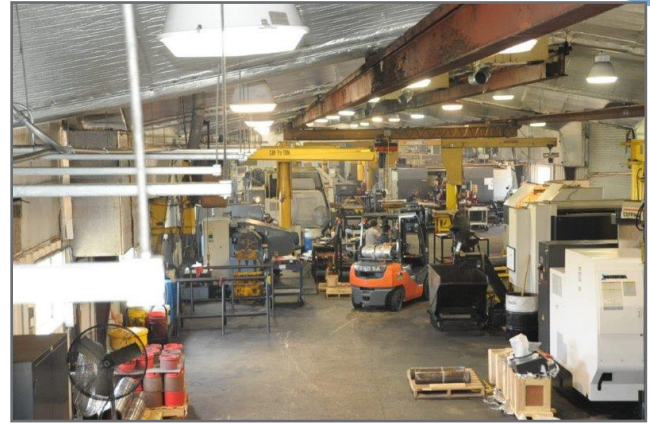
LOCATION: 205 E. Woodlawn Ranch Road,
Houma, LA 70363

LAND AREA: 10.416 AC
ZONING: None
NUMBER OF BUILDINGS: 5
GROSS BUILDING AREA: +/- 102,782 SF
AREA BREAKDOWN:
OFFICE: +/- 15,800 SF
WAREHOUSE: +/- 32,000 SF

BUILDING CLASS: Class S - Steel Construction
CLEAR HEIGHT: The clear height throughout the campus varies between 14-28' eave height.

CRANE WAYS: 10-ton crane with 150 LF
5-ton crane with 150 LF
3-ton crane

UTILITIES: Electricity, water, natural gas. Private on-site sewerage treatment.



BUILDING	SIZE (SF)	CLEAR HEIGHT	YEAR BUILT/RENOVATED
Office/Warehouse	47,800	20'	1977
Machine Shop	22,523	16', 20'	1977
Deep Water Bldg	14,609	28'	2005
PBR Bldg	11,000	22'	2007
Maintenance Bldg	6,750	14'	Unknown

SALE INFORMATION

Michelle Wogan

713.270.3348

michelle.wogan@transwestern.com

Logan "Hank" Babin, III, CRE

985.872.4597

hank@loganbabin.com

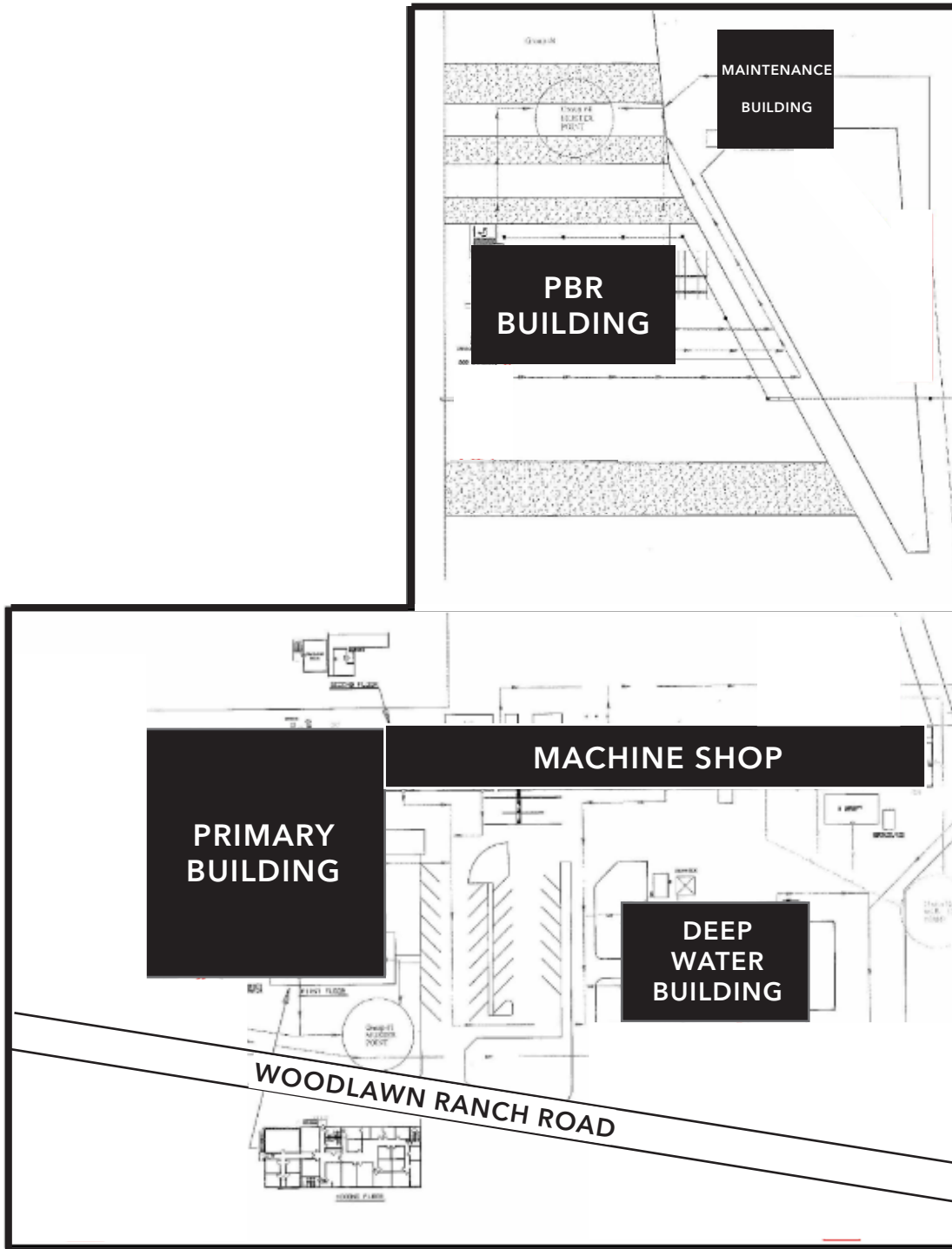
Jourdan Despot

985.438.1893

jdespot@loganbabin.com

The information provided herein was obtained from sources believed reliable; however, Transwestern makes no guarantees, warranties or representations as to the completeness or accuracy thereof. The presentation of this property is submitted subject to errors, omissions, change of price or conditions, prior sale or lease, or withdrawal without notice. Copyright © 2013 Transwestern.

SURVEY



SALE INFORMATION

Michelle Wogan

713.270.3348

michelle.wogan@transwestern.com

Logan "Hank" Babin, III, CRE

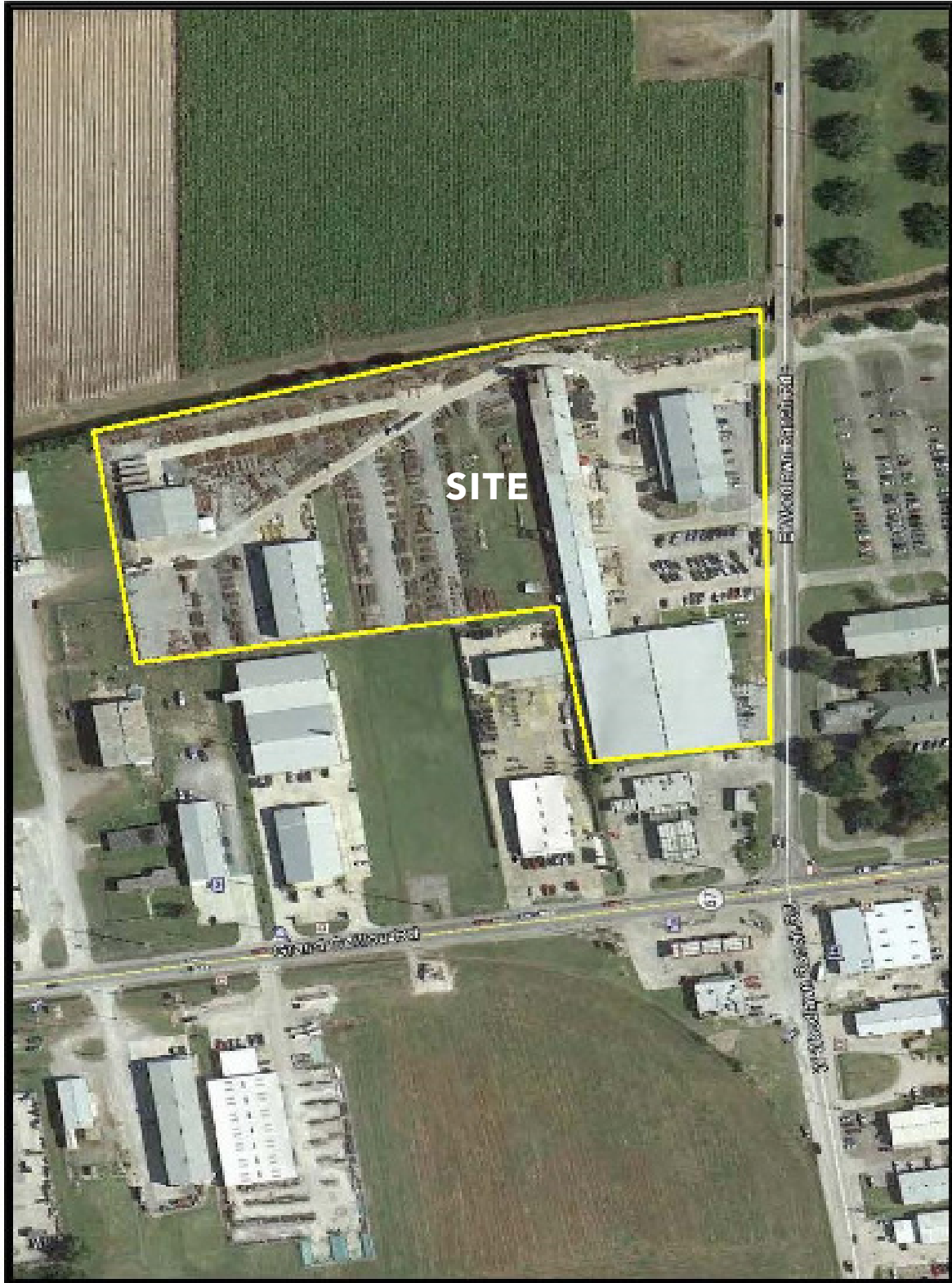
985.872.4597

hank@loganbabin.com

Jourdan Despot

985.438.1893

jdespot@loganbabin.com



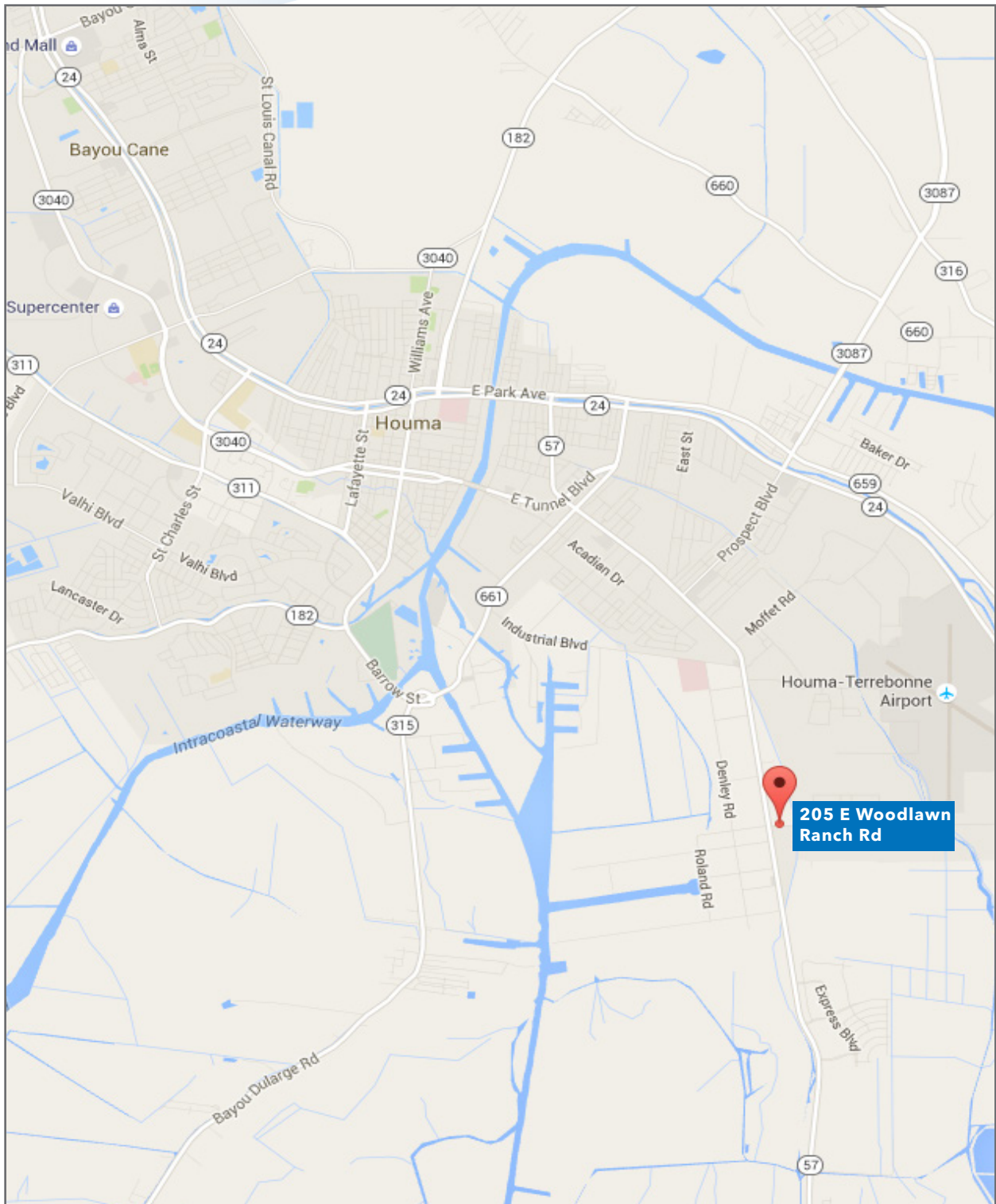
SALE INFORMATION

Michelle Wogan
713.270.3348
michelle.wogan@transwestern.com

Logan "Hank" Babin, III, CRE
985.872.4597
hank@loganbabin.com

Jourdan Despot
985.438.1893
jdespot@loganbabin.com

205 E. WOODLAWN RANCH RD.



SALE INFORMATION

Michelle Wogan

713.270.3348

michelle.wogan@transwestern.com

Logan "Hank" Babin, III, CRE

985.872.4597

hank@loganbabin.com

Jourdan Despot

985.438.1893

jdespot@loganbabin.com

The information provided herein was obtained from sources believed reliable; however, Transwestern makes no guarantees, warranties or representations as to the completeness or accuracy thereof. The presentation of this property is submitted subject to errors, omissions, change of price or conditions, prior sale or lease, or withdrawal without notice. Copyright © 2013 Transwestern.