



Unit 103, 4090 Shelbourne Street | Victoria, BC

For Lease | 608 SF Office Space

Anna Wray

Personal Real Estate Corporation

Vice President

+1 250 414 8444

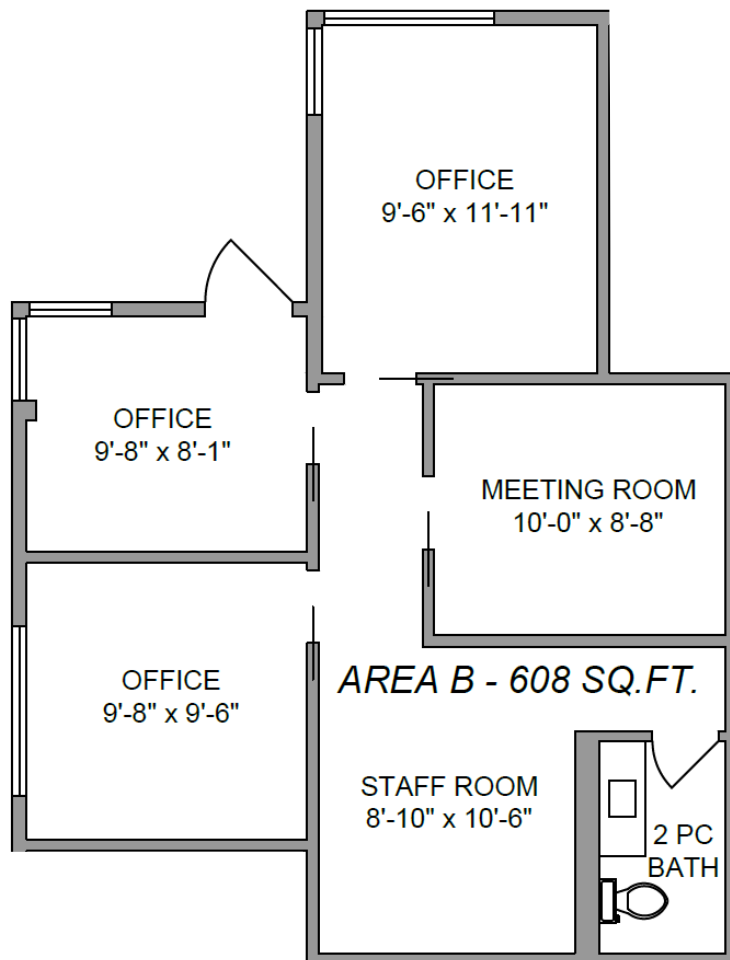
anna.wray@colliers.com





The Offering

Second floor corner office space in turnkey condition. Built out with three offices, bathroom and staff area.



PROPERTY OVERVIEW

SALIENT FACTS

Address	Unit 103 - 4090 Shelbourne Street, Victoria, BC
Area	608 SF
Availability	October 1, 2026
Parking	Ample on-site surface parking for staff & visitors
Base Rent	\$25.00 PSF
Additional Rent	\$23.34 PSF



1
min

50 M
TORQUAY VILLAGE



3
min

1.0 KM
GORDON HEAD
REC. CENTRE



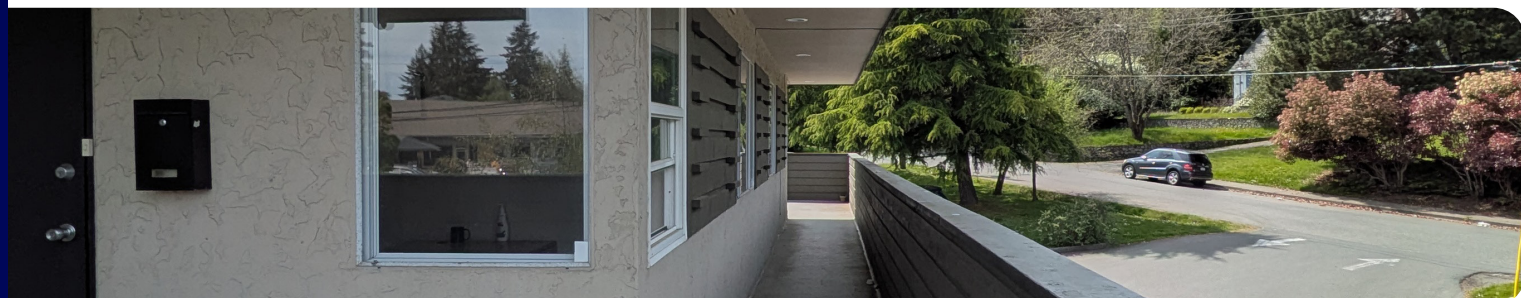
5
min

2.3 KM
UVIC



15
min

6.8 KM
DOWNTOWN
VICTORIA





For more information,
please contact:

Anna Wray

Personal Real Estate Corporation

Vice President

+1 250 414 8444

anna.wray@colliers.com

This document has been prepared by Colliers for advertising and general information only. Colliers makes no guarantees, representations or warranties of any kind, expressed or implied, regarding the information including, but not limited to, warranties of content, accuracy and reliability. Any interested party should undertake their own inquiries as to the accuracy of the information. Colliers excludes unequivocally all inferred or implied terms, conditions and warranties arising out of this document and excludes all liability for loss and damages arising there from. This publication is the copyrighted property of Colliers and/or its licensor(s). Copyright © 2026. All rights reserved. This communication is not intended to cause or induce breach of an existing listing agreement. Colliers Macaulay Nicolls Inc., Brokerage

