

FOR LEASE

Plug & Play Office Opportunity in Portland CBD

310 SW Park Avenue • Portland, Oregon



10th Floor - 7,654 RSF Available immediately

- ◆ Highly walkable area, close to premier restaurants, hotels and retail shops
- ◆ Immediate access to Tri-Met Bus Line, Portland Street Car and Max light rail
- ◆ Functional open floor plan with two conference rooms, kitchenette, private restrooms and multiple private offices
- ◆ New workstations and furniture negotiable
- ◆ Excellent freeway access
- ◆ Secured access

LEASE RATE: \$21.50/SF - Full Service

For further information, please contact our exclusive agent:

Mark Reeves 503.972.5511 mreeves@ngkf.com

David C. Squire, SIOR 503.972.5505 dsquire@ngkf.com

Licensed Oregon Real Estate Brokers

Newmark Grubb Knight Frank

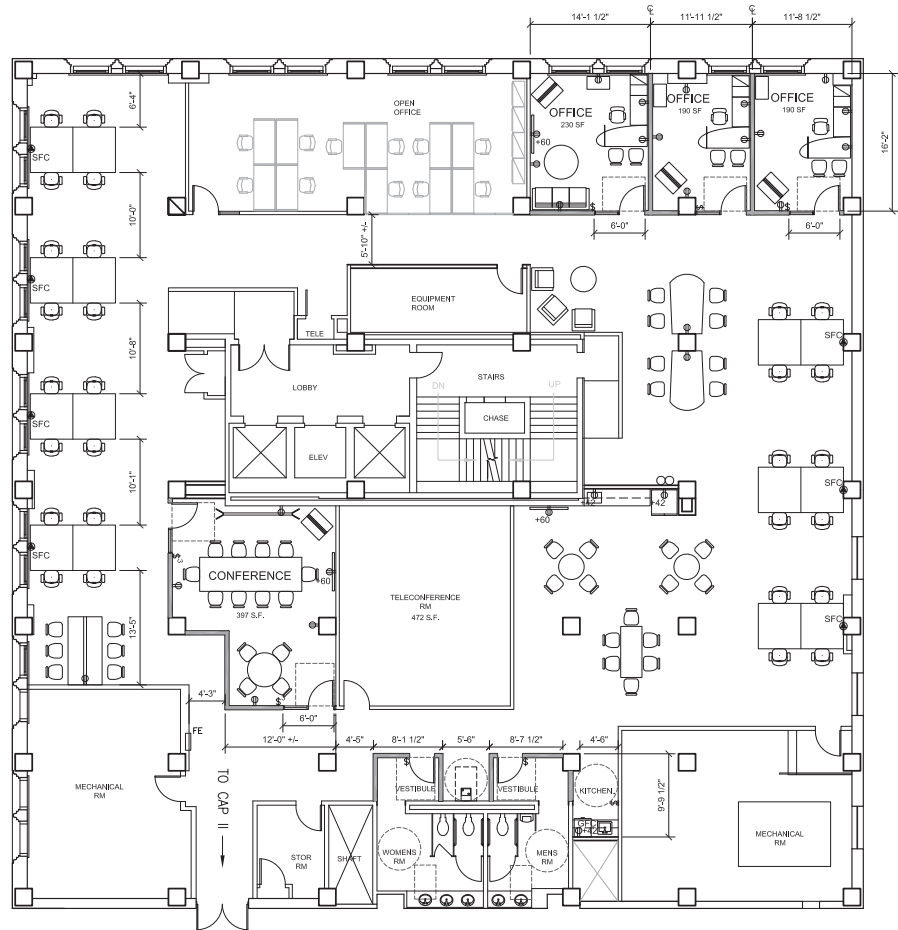
www.ngkf.com

Procuring broker shall only be entitled to a commission, calculated in accordance with the rates approved by our principal only if such procuring broker executes a brokerage agreement acceptable to us and our principal and the conditions as set forth in the brokerage agreement are fully and unconditionally satisfied. Although all information furnished regarding property for sale, rental, or financing is from sources deemed reliable, such information has not been verified and no express representation is made nor is any to be implied as to the accuracy thereof and it is submitted subject to errors, omissions, change of price, rental or other conditions, prior sale, lease or financing, or withdrawal without notice and to any special conditions imposed by our principal.

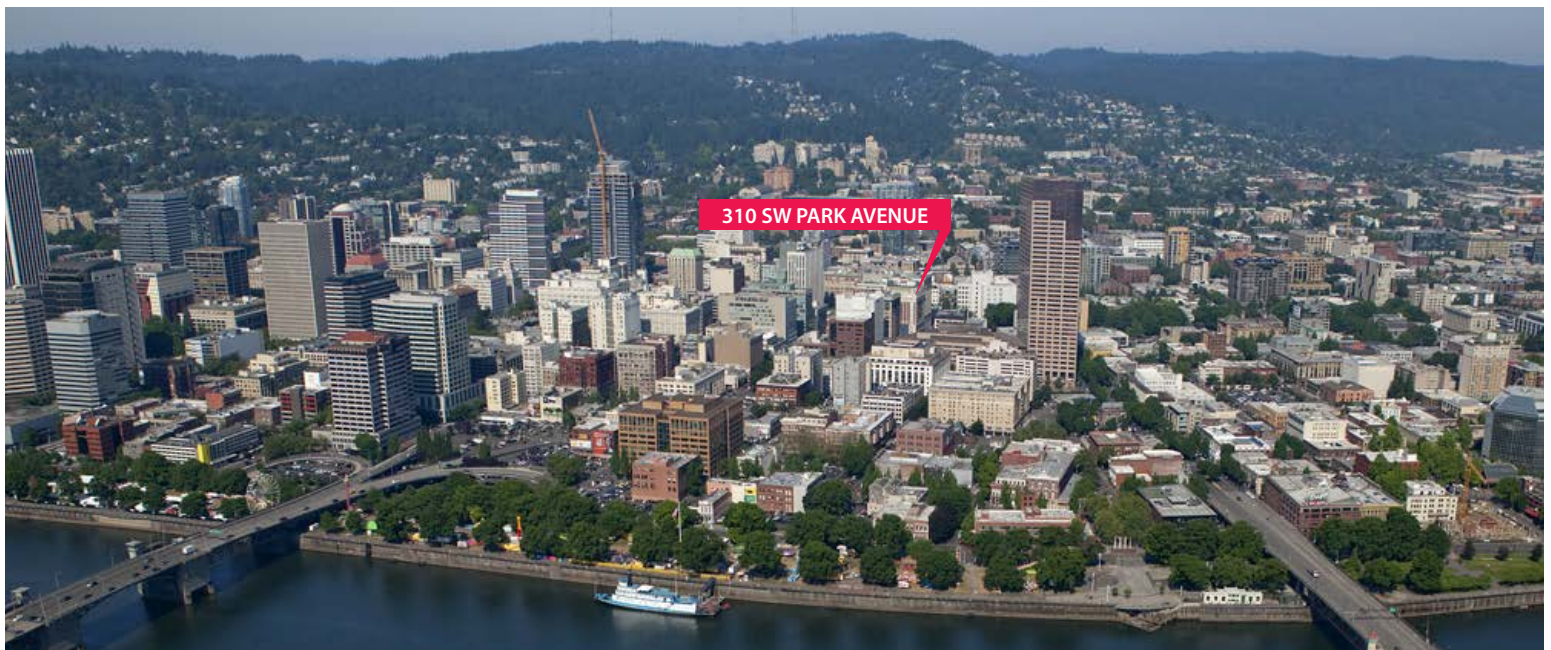
FOR LEASE

Plug & Play Office Opportunity in Portland CBD

310 SW Park Avenue • Portland, Oregon



10th Floor
7,654 RSF



Newmark Grubb Knight Frank

For further information, please contact our exclusive agent:
Mark Reeves 503.972.5511 mreeves@ngkf.com
David C. Squire, SIOR 503.972.5505 dsquire@ngkf.com
Licensed Oregon Real Estate Brokers