



To Let

Unit 2, Joshua Park, Bell Close, Plympton, Plymouth, PL7 4AA

Newly constructed warehouse / office unit
located in a popular industrial estate

Total unit size 190 sq m / 2035 sq ft

4 Car parking spaces

Rent price £16,500 pax

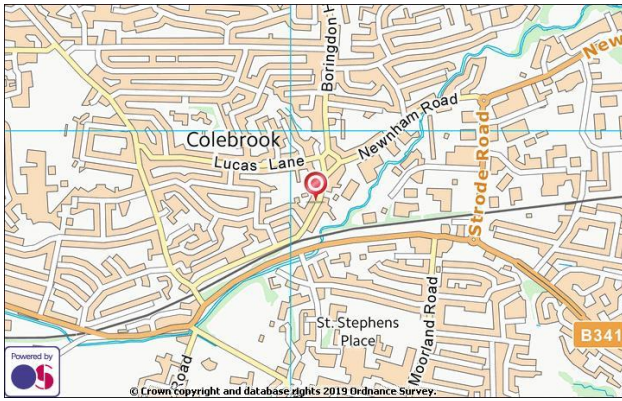
Sale price £220,000 for long leasehold

Viewing by prior appointment with
Gavin Sagar or Chris Ryland

(01752) 670700

gavins@sccplymouth.co.uk

chrisryland@sccplymouth.co.uk



Location & Description

Joshua Park is situated off Bell Close within the established Newnham Industrial Estate in Plympton. Approximately half a mile north of the Ridgeway, Plympton's main retail centre and one and a half miles east of Marsh Mills roundabout / the A38 dual carriageway. Plymouth city centre is located approximately 6 miles by road to the west. Newnham Industrial Estate is one of the principal industrial estates in Plympton, a significant residential suburb of Plymouth having in excess of 30,000 inhabitants.

The subject premises comprise a newly constructed light industrial unit forming part of a terrace of similar properties. The ground floor comprises a reception area with WC facilities and a useful workshop with kitchen area. The first floor is configured as an open plan office with a dual aspect.

Accommodation

(all areas and dimensions are approximate and are measured on a net internal basis unless otherwise stated)

Ground Floor	96.44 sq m	1,038 sq ft
Mezzanine	92.64 sq m	997 sq ft
Total:	189.08 sq m	2,035 sq ft

Tenure

The premises are available by way of a new lease, length negotiable, drawn on equivalent full repairing and insuring terms. The quoting rental is to be £16,500 PAX. Alternatively our client would consider the sale of the long leasehold of 999 years commencing 24th June 2018 for £220,000.

Rateable Value

With this being a new build unit, we recommend that you make your own enquiries into the actual liability. Guidance can be obtained at www.voa.gov.uk.

Energy Performance Certificate (EPC)

The EPC rating for the property is B (50).

VAT

All figures within these terms are exclusive of VAT at the prevailing rate where applicable.

Legal Costs

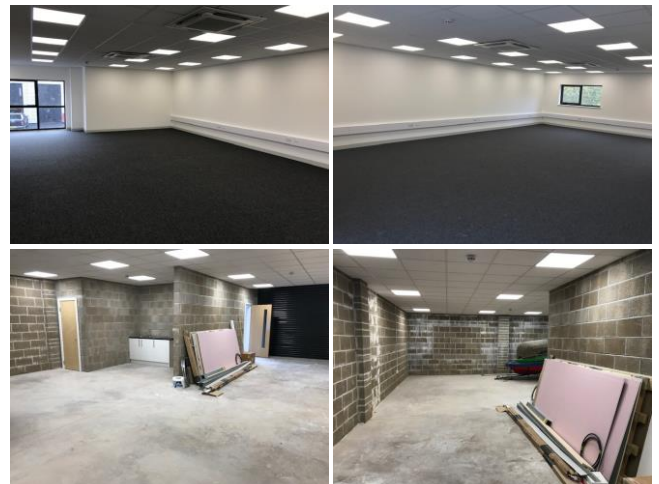
Each party to bear their own legal costs incurred in the transaction.

The landlord supports the code for leasing business premises in England and Wales 2007.

Other

In line with The Money Laundering Regulations 2007, Stratton Creber Commercial are obligated to verify ID for all clients that are conducting property transactions through the Company.

Ref: 12394



Plymouth Office

Farrer Court, 75 North Hill, Plymouth PL4 8HB
Tel: 01752 670700
Fax: 01752 221655

Stratton Creber Commercial for themselves and for the Vendors or Lessors of the property whose Agents they are, give notice that:

- The particulars are set out as a general outline only for the guidance of intended purchasers or lessees, and do not constitute part of, an offer or contract;
- All descriptions, dimensions, reference to condition and necessary permissions for use and occupation, and other details are given without responsibility and any intending purchasers or tenants should not rely on them as statements or representations of fact but must satisfy themselves by inspection or otherwise as to each of them;
- No person in the employment of Stratton Creber Commercial has any authority to make or give any representation of warranty in relation to this property.