



Maxham Rd
35,000+ VPD

11.44 TOTAL ACRES | GENERAL COMMERCIAL ZONING | +/-4.5 AC FENCED & PAVED/GRAVELED

OFFERING MEMORANDUM

PRIME DEVELOPMENT SITE | ATLANTA MSA

160 Maxham Rd | AUSTELL, GEORGIA 30168



◆ *Point of Contact*



Ani Paulson | *Senior Vice President*

apaulson@northmarq.com

404.407.5907

Lic: GA #428443

DEBT + EQUITY

Josh Darby

Vice President

jdarby@northmarq.com

678.954.4660

Van Glosson

Vice President

vglosson@northmarq.com

678.954.4675

Northmarq

3414 Peachtree Rd NE, Suite 900

Atlanta, GA 30326

770.481.1960

northmarq.com

CONFIDENTIALITY AND RESTRICTED USE AGREEMENT

This Confidential Offering Memorandum ("COM") is provided by Northmarq ("Northmarq"), solely for your consideration of the opportunity to acquire the commercial property described herein (the "Property"). This COM may be used only as stated herein and shall not be used for any other purpose, or in any other manner, without prior written authorization and consent of Northmarq.

This COM does not constitute or pertain to an offer of a security or an offer of any investment contract. This COM contains descriptive materials, financial information and other data compiled by Northmarq for the convenience of parties who may be interested in the Property. Such information is not all inclusive and is not represented to include all information that may be material to an evaluation of the acquisition opportunity presented. Northmarq has not independently verified any of the information contained herein and makes no representations or warranties of any kind concerning the accuracy or completeness thereof. All summaries and discussions of documentation and/or financial information contained herein are qualified in their entirety by reference to the actual documents and/or financial statements, which upon request may be made available. An interested party must conduct its own independent investigation and verification of any information the party deems material to consideration of the opportunity, or otherwise appropriate, without reliance upon Northmarq.

The Property may be financed or withdrawn from the market without notice, and its owner(s) reserve(s) the right to negotiate with any number of interested parties at any time. The Property is offered and sold by its owner(s) as is, where is, and with all faults, without representation or warranty of any kind except for any customary warranties of title.

BY ACCEPTING THIS COM, YOU AGREE THAT: (1) all information contained herein, and all other information you have received or may hereafter receive from Northmarq relating to the Property, whether oral, written or in any other form (collectively, the "Information"), is strictly confidential; (2) you will not copy or reproduce, and claim as your own without attribution to Northmarq, all or any part of this COM or the Information; (3) upon request by Northmarq at any time, you will return and/or certify your complete destruction of all copies of this COM and the Information; (4) for yourself and all your affiliates, officers, employees, representatives, agents and principals, you hereby release and agree to indemnify and hold harmless Northmarq all of its affiliates, officers, employees, representatives, agents and principals, from and with respect to any and all claims and liabilities arising from or related to the receipt or use of this COM and/or any other Information concerning the Property; (5) you will not provide this COM or any of the Information to any other party unless you first obtain such party's acceptance and approval of all terms, conditions, limitations and agreements set forth herein, as being applicable to such party as well as to you; and (6) monetary damages alone will not be an adequate remedy for a violation of these terms and that Northmarq shall be entitled to equitable relief, including, but not limited to, injunctive relief and specific performance, in connection with such a violation and shall not be required to post a bond when obtaining such relief.

SECTION ONE

Executive Summary



Investment Overview



\$4,800,000
PRICE

TOTAL LOT SIZE	11.44 AC
PRICE/AC	\$419,580
NO. OF LOTS	Four (4)
ZONING	GC General Commercial
TOTAL PAVED AREA	±4.5 AC



160 Maxham Rd | Austell, GA

Northmarq is pleased to present to qualified investors the opportunity to acquire the fee simple interest in the development land located at 160 Maxham Road in Austell, Georgia. The offering totals 11.44 acres in a high-growth submarket of the Atlanta MSA and is available for purchase individually or as a portfolio. Approximately 4.5 acres are currently fenced and paved, with utilities available to the site, while the smaller lots provide strong frontage, visibility, and access along Maxham Road (35,000+ vehicles per day). Recently annexed into the City of Austell, the property presents a potential opportunity to rezone to light industrial for IOS use or multifamily development. The site is located less than 15 miles from downtown Atlanta and approximately 0.8 miles from the Thornton Road intersection with convenient access to Interstate 20. The surrounding area benefits from strong demographics, with a population exceeding 124,300 and an average household income above \$99,500 within a five-mile radius.

INVESTMENT HIGHLIGHTS



Prime Development Opportunity

11.44 Total Acres in a High-Growth Submarket of the Atlanta MSA | Potential to Purchase Lots Separately, Contact Broker for More Information



Flexible Development Potential

Roughly 4.5 Acres are Fenced & Paved/Graveled | All Utilities Available to the Site | Excellent Visibility & Access via Maxham Rd (35,000+ VPD)



Significant Upside Potential

Recently Annexed into the City of Austell | Currently Zoned GC (General Commercial) with Potential Opportunity to Rezone to Light Industrial or Multifamily



Ideal Access to I-20 & Downtown Atlanta

Ideally Positioned Less than 15 Miles from Downtown Atlanta & In Close Proximity to Interstate 20 | Less than 0.8 Miles from the Thornton Rd Intersection



Strong Demographics in a High-Growth Submarket

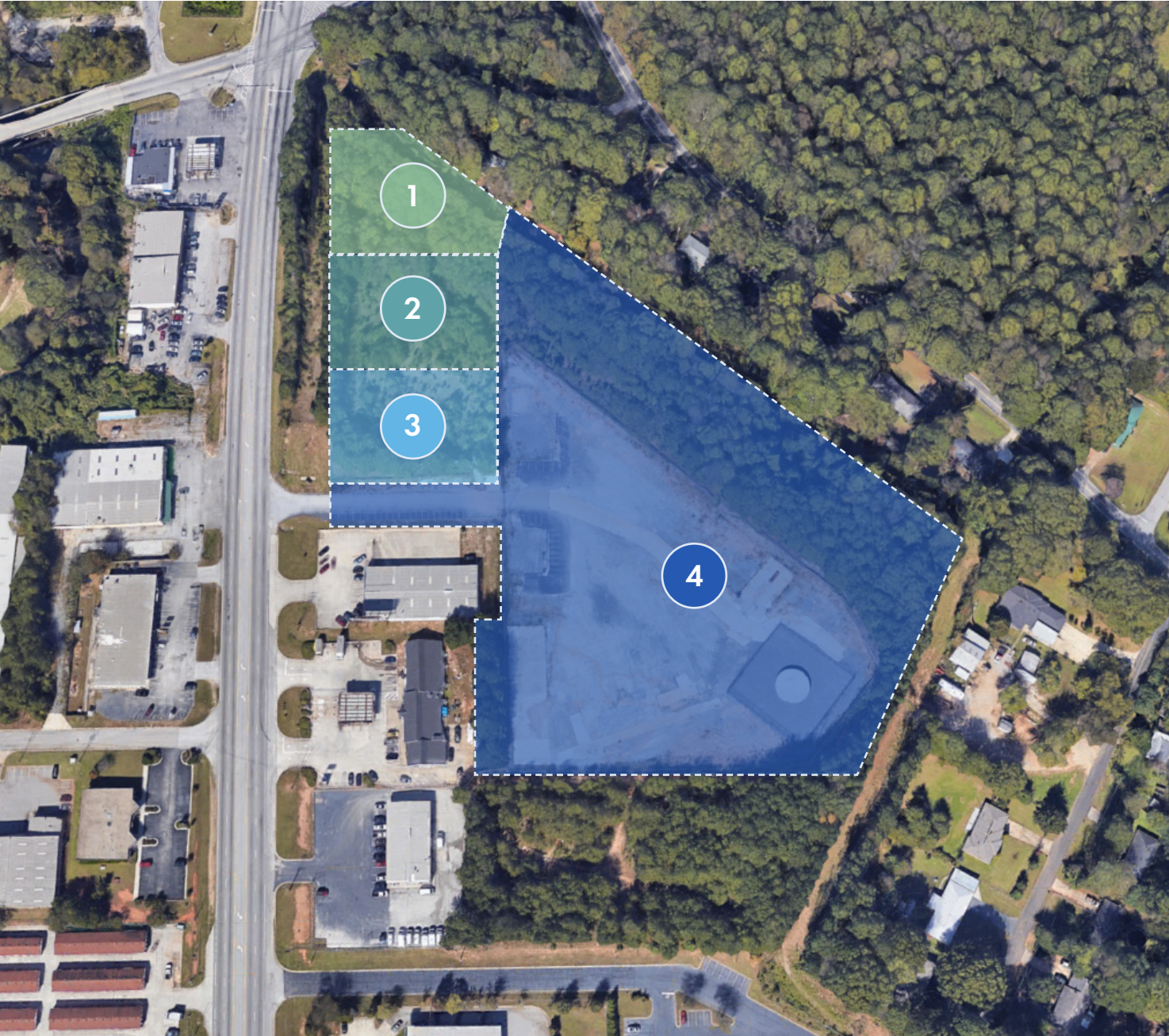
Cobb County is the 3rd Largest County in Georgia & Expected to Grow 19% by 2050 | Population of Over 124,300 with an Average HHI Over \$99,500 within a 5-Mile Radius



Strategic Location within Established Industrial Corridor

Austell & Lithia Springs Emerging as a Major Industrial Hub | Numerous Large-Scale Facilities Underway | Nearby Users Include Amazon, Staples, XPO, & Other Major Distributors

Property Overview



1 1.02 AC

2 1.00 AC

3 1.02 AC

4 8.40 AC

TOTAL
LOT SIZE

11.44 AC

SECTION TWO

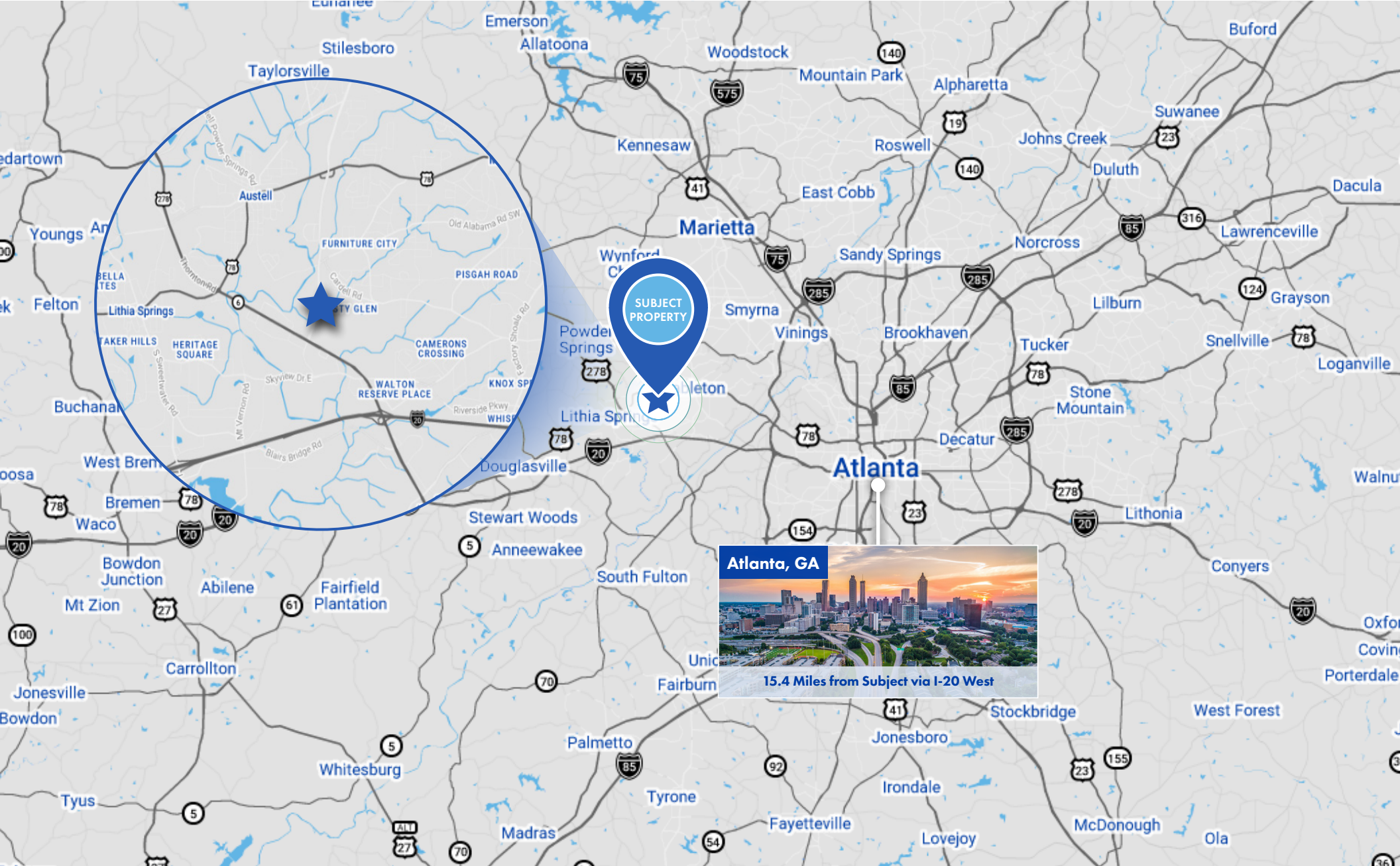
Location Overview



Aerial Map



Regional Map



Location Overview

Atlanta MSA

Atlanta is the largest city in Georgia and the county seat of Fulton County, with portions extending into DeKalb County. It is the eighth largest metropolitan area in the United States, with a 2023 metro population exceeding 6.2 million residents. Atlanta has consistently ranked among the fastest growing large metros in the nation, driven by strong in-migration and economic expansion. Known as the business capital of the Southeast, Atlanta is home to 16 Fortune 500 company headquarters and more than 30 Fortune 1000 companies, including The Coca-Cola Company, Delta Air Lines, The Home Depot, UPS, and Southern Company. The metro is also a hub for innovation, with strengths in fintech, film production, logistics, and advanced manufacturing.

Atlanta's central location makes it one of the nation's most important transportation and distribution centers. Three major interstate highways (Interstate 20, Interstate 75, and Interstate 85) converge in downtown Atlanta, creating a strategic nexus for regional and national commerce. The city is also globally connected through Hartsfield-Jackson Atlanta International Airport, the busiest airport in the world by passenger volume, with more than 100 million annual travelers and direct flights to over 150 U.S. destinations and 70 international cities. Nearly 80 percent of the U.S. population lives within a two-hour flight of Atlanta, making it a true gateway to both domestic and international markets. Atlanta's pro-business climate, diversified economy, and unmatched connectivity continue to solidify its position as one of the nation's leading metros for corporate growth, talent attraction, and real estate investment.



Sources: Site Selection Group 2020 Tech City Ranking Report, Business Facilities 2020 Metro Rankings Report, WalletHub Best and Worst Metro Areas for STEM Professionals (2020), Penske Annual Top Moving Destinations List (2020)



Demographics



POPULATION

	1 MILE	3 MILES	5 MILES
2020 POPULATION	6,217	47,809	118,931
2025 POPULATION	6,220	49,402	124,360
2030 POPULATION	6,242	50,344	127,708



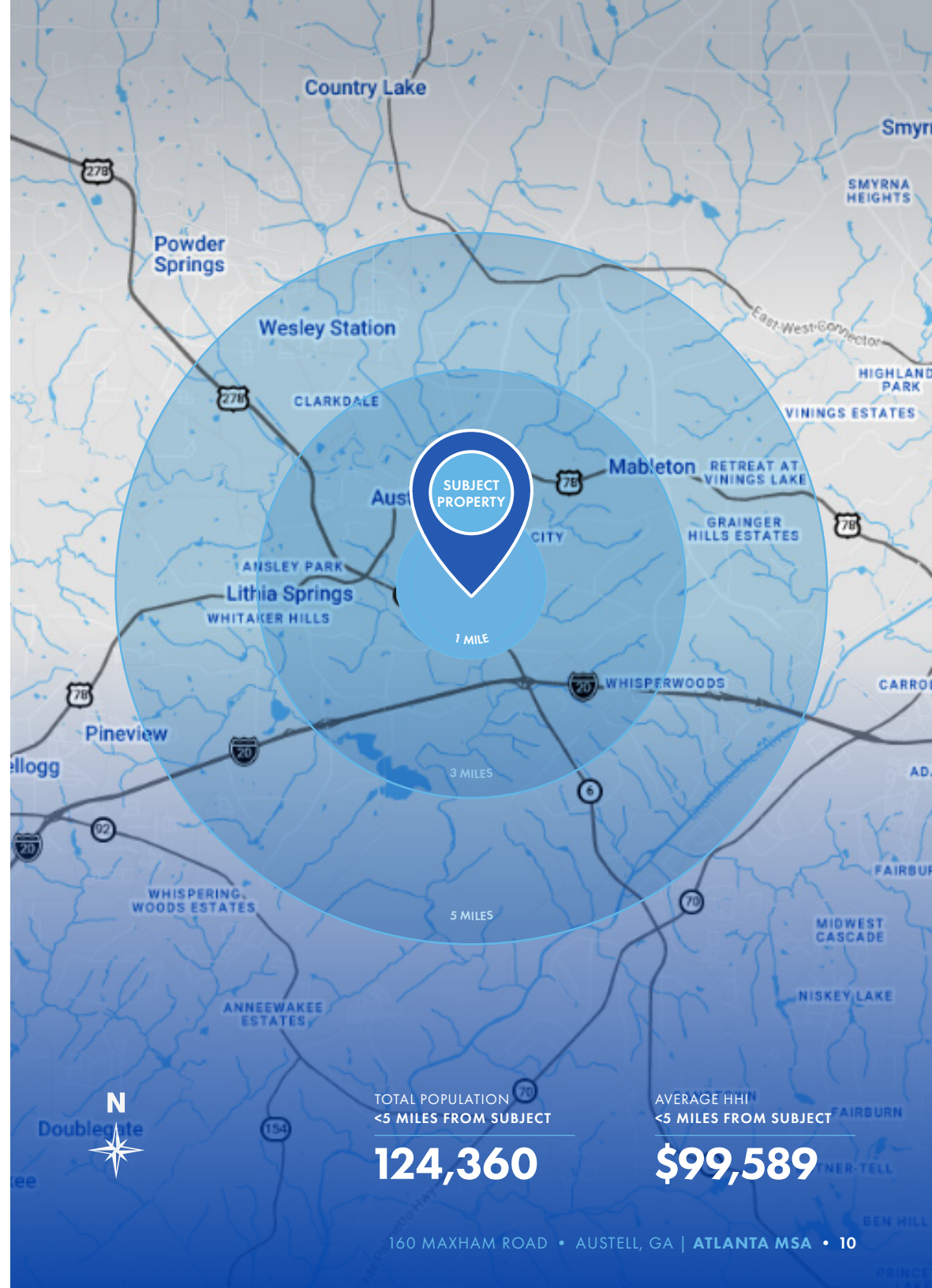
HOUSEHOLDS

	1 MILE	3 MILES	5 MILES
2020 HOUSEHOLDS	2,569	18,052	44,543
2025 HOUSEHOLDS	2,584	18,764	46,935
2030 HOUSEHOLDS	2,603	19,163	48,375



HOUSEHOLD INCOME

	1 MILE	3 MILES	5 MILES
2025 AVERAGE HOUSEHOLD INCOME	\$89,417	\$93,912	\$99,589
2030 AVERAGE HOUSEHOLD INCOME	\$99,625	\$105,735	\$111,255



TOTAL POPULATION
<5 MILES FROM SUBJECT

124,360

AVERAGE HHI
<5 MILES FROM SUBJECT

\$99,589



Point of Contact



Ani Paulson | *Senior Vice President*
apaulson@northmarq.com
404.407.5907
Lic: GA #428443

DEBT + EQUITY

Josh Darby
Vice President
jdarby@northmarq.com
678.954.4660

Van Glosson
Vice President
vglosson@northmarq.com
678.954.4675

Northmarq
3414 Peachtree Rd NE, Suite 900
Atlanta, GA 30326
770.481.1960
northmarq.com

Commercial Real Estate
Debt + Equity | Investment Sales | Loan Servicing | Fund Management

This Offering Memorandum has been prepared solely for informational purposes to assist prospective investors in evaluating a potential real estate investment opportunity. Northmarq makes no guarantees, representations, or warranties of any kind, expressed or implied, regarding the information including, but not limited to, warranties of content, completeness, accuracy, reliability, and fitness for any particular purpose. This document does not constitute an offer to sell or a solicitation of an offer to buy any securities, nor shall it be construed as investment, legal, or tax advice. Prospective investors are encouraged to conduct their own independent due diligence and consult with their financial, legal, and tax advisors before making any investment decisions. The projections, assumptions, and forward-looking statements included in this memorandum are for illustrative purposes only and are subject to significant uncertainties and risks. Actual results may differ materially from those expressed or implied. Past performance is not indicative of future results. By accepting this memorandum, the recipient agrees to keep its contents confidential and not to disclose or reproduce it, in whole or in part, without prior written consent. Neither the property owner nor any of its affiliates shall be liable for any loss or damage arising from reliance on the information contained herein. The use of any graphics or logos in this memorandum is for marketing purposes only, and does not in any way imply any ownership, use, or affiliation with the real estate that is the subject of this memorandum. ANY RELIANCE ON THE CONTENT OF THIS OFFERING MEMORANDUM IS SOLELY AT YOUR OWN RISK.

© 2026. All rights reserved.

northmarq.com