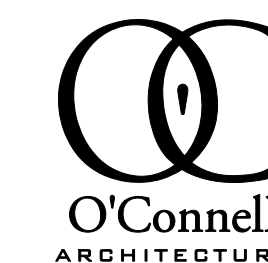
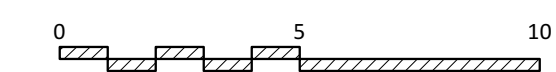
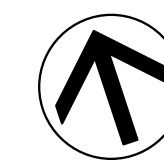
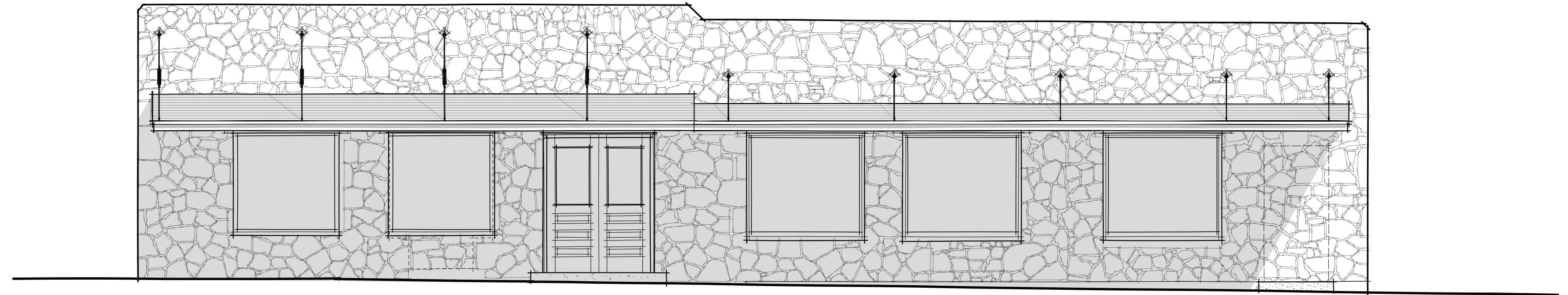


1 NEW FLOOR PLAN
Scale: 1/4" = 1'-0"

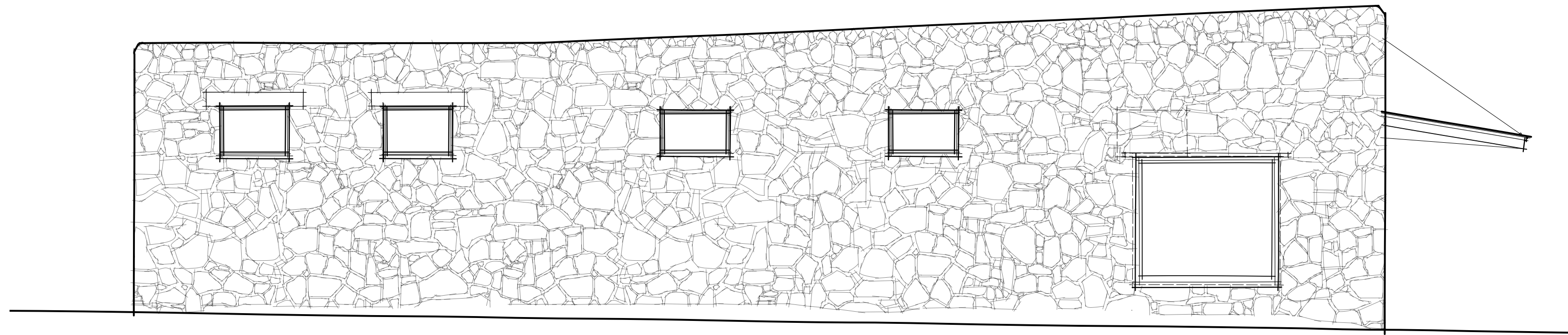


O'Connell
ARCHITECTURE

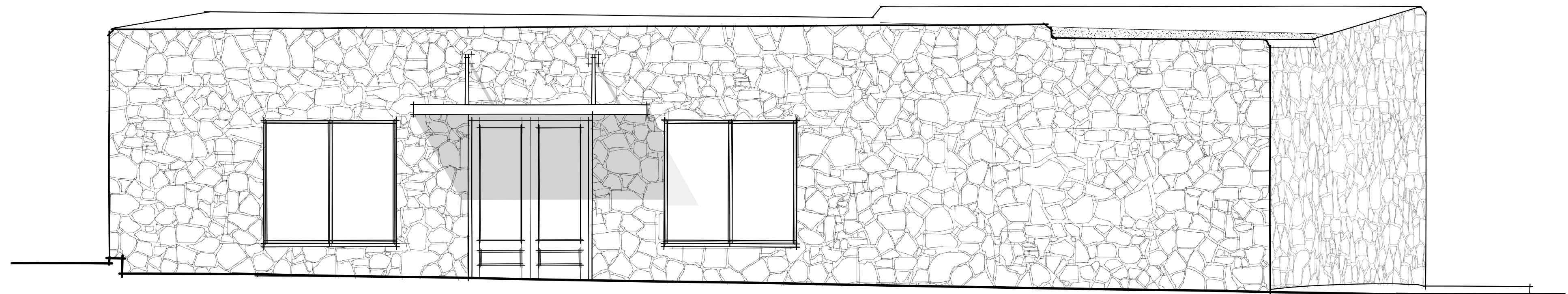
3908 AVENUE B, #309
AUSTIN, TEXAS 78751
512 | 751-1374



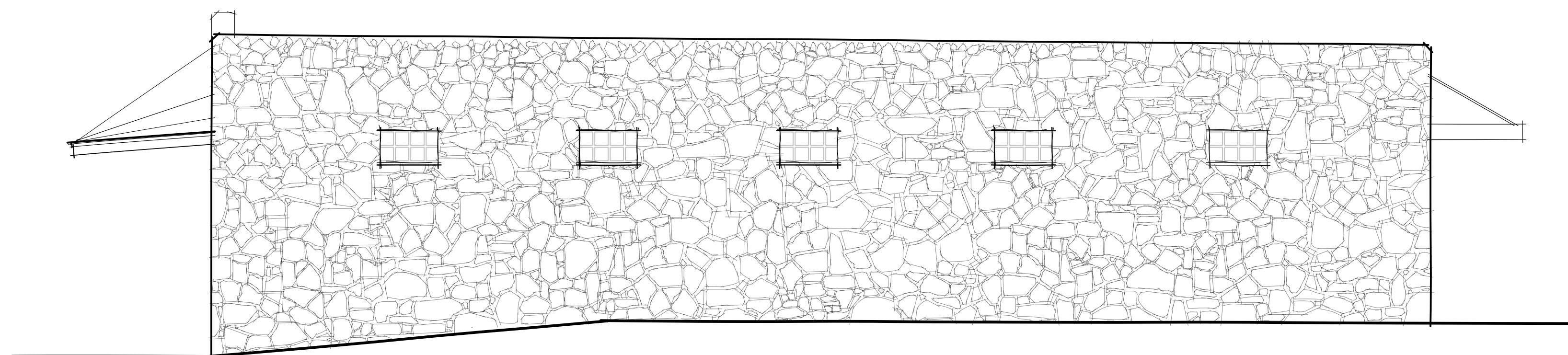
1 LYDIA STREET (WEST) ELEVATION
Scale: 1/4" = 1'-0"



2 9TH STREET (NORTH) ELEVATION
Scale: 1/4" = 1'-0"



3 REAR (EAST) ELEVATION
Scale: 1/4" = 1'-0"



4 SOUTH ELEVATION
Scale: 1/4" = 1'-0"