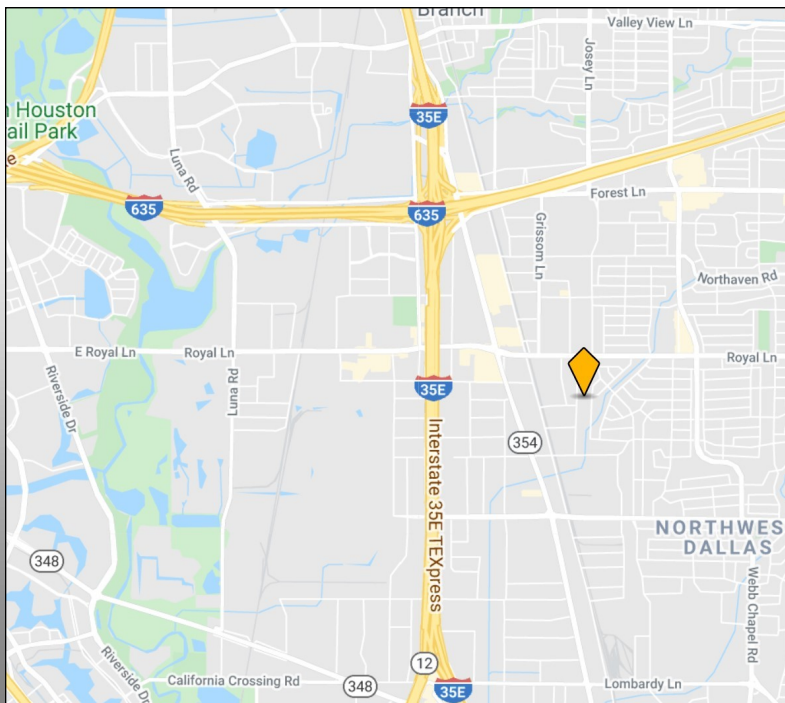


FOR LEASE: 61,200 SQUARE FEET
11210 ZODIAC LANE, DALLAS, TX 75229

INDUSTRIAL REAL ESTATE BROKERAGE

WWW.MERCER-COMPANY.COM



DETAILS

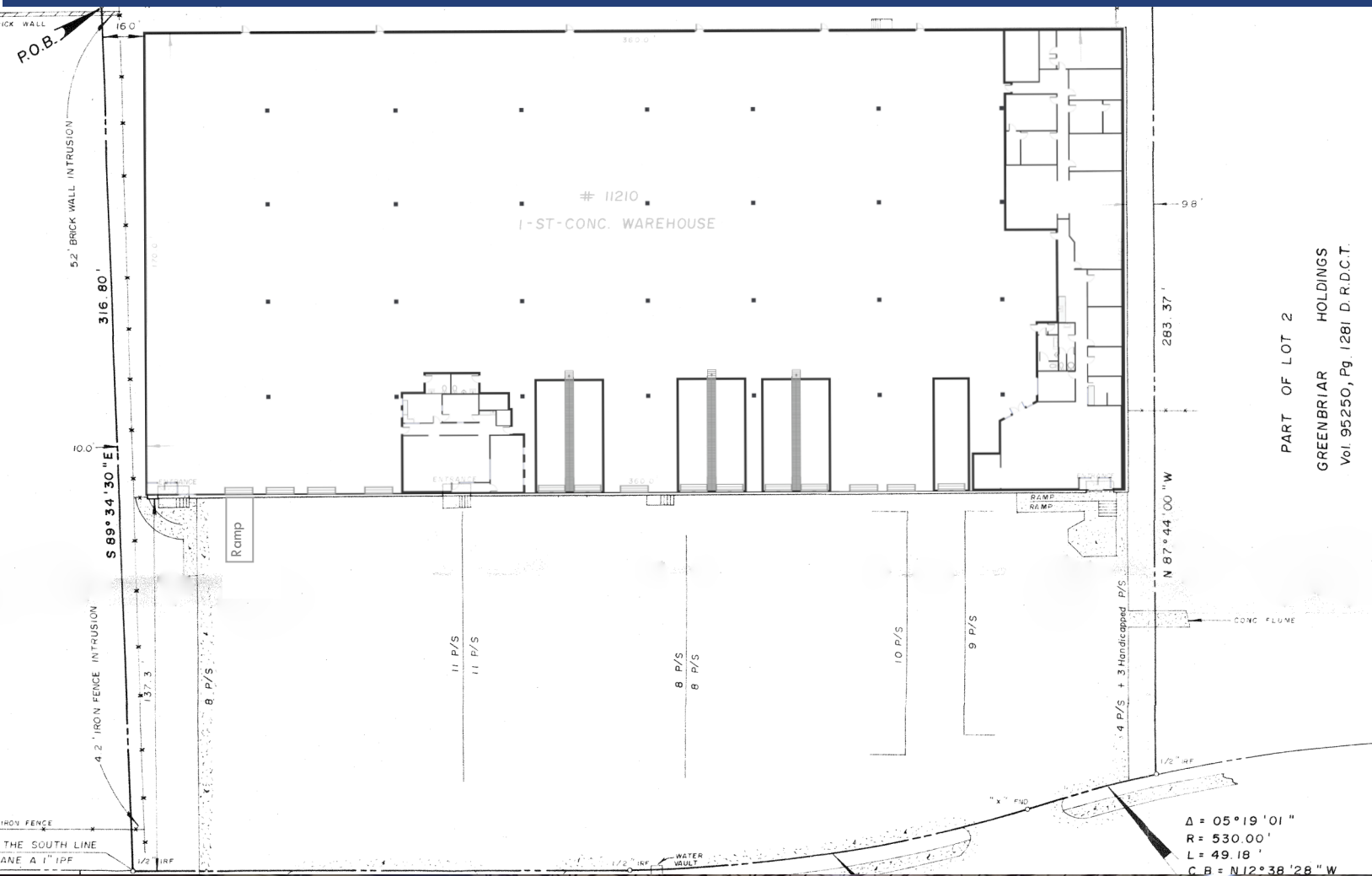
- ◆ TOTAL SF: 61,200
- ◆ OFFICE SF: ±7,000
- ◆ LAND AREA: 2.48 AC
- ◆ DOCK HIGH: 13
7 DOCK WELLS & 1 LEVELER
- ◆ GRADE LEVEL LOADING: 1 RAMP
- ◆ CLEAR HEIGHT: 20'-23'
- ◆ PARKING: 50 SPACES
- ◆ SPRINKLERS
- ◆ 34'X45' COLUMN SPACING

KEENAN COOK
CELL 214.814.5876
KCOOK@MERCER-COMPANY.COM

FOR LEASE: 61,200 SQUARE FEET
 11210 ZODIAC LANE, DALLAS, TX 75229

INDUSTRIAL REAL ESTATE BROKERAGE

WWW.MERCER-COMPANY.COM



PART OF LOT 2
 GREENBRIAR HOLDINGS
 Vol. 95250, Pg. 1281 D.R.D.C.T.



The information contained herein has been given to us by the owner of the property or other sources we deem reliable. We have no reason to doubt its accuracy, but we do not guarantee it. All information should be verified before purchase or lease.