



FOR LEASE

Harbor Bank Building

25 W Fayette Street Baltimore, MD 21202

HEADQUARTERS BUILDING OUTSTANDING VIEWS



Property Highlights

- Great views of newly renovated Charles Center
- 6,000 SF floorplates in shell condition
- “Headquarters” quality finishes
- 24 hour security

Building Features

Building Size: 60,000 SF

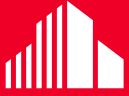
Space Available: 18,000 SF contiguous space (Floors 5-7)



L. Bruce Matthai, CCIM
Managing Director
+1 410 347 7539
bruce.matthai@cushwake.com

Roland O. Campbell, Jr., GRI
President & CEO
+1 410 486 0100 x 11
rocampbell@rocrealty.com

100 Light Street, Suite 1400
Baltimore, MD 21202
T: +1 410 752 4285
F: +1 410 576 9031
cushmanwakefield.com



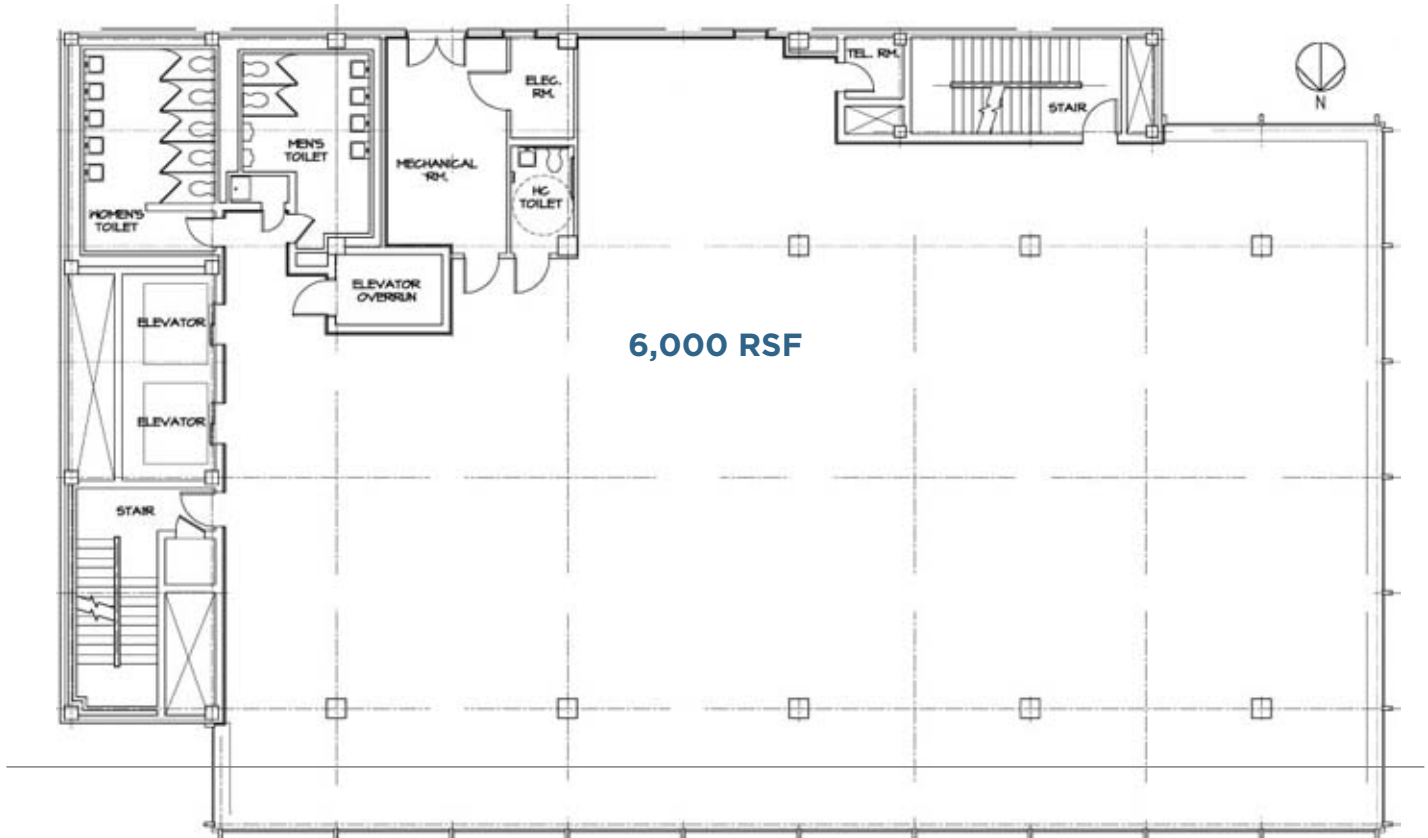
**CUSHMAN &
WAKEFIELD**

FOR LEASE

Harbor Bank Building

25 W Fayette Street Baltimore, MD 21202

Floors 5-7



L. Bruce Matthai, CCIM
 Managing Director
 +1 410 347 7539
bruce.matthai@cushwake.com

Roland O. Campbell, Jr., GRI
 President & CEO
 +1 410 486 0100 x 11
rocampbell@rocrealty.com

100 Light Street, Suite 1400
 Baltimore, MD 21202
 T: +1 410 752 4285
 F: +1 410 576 9031
cushmanwakefield.com