

BOMA 2017 OFFICE BUILDINGS: STANDARD METHODS OF MEASUREMENT, METHOD A (ANSI/BOMA Z65.1-2017)

- Rentable Exclusions
- Building Service Area
- Building Amenity Area
- Floor Service Area
- Tenant Area & Tenant Ancillary Area



"Client"

BRICKSTAR
CAPITAL

Spanish River Plaza
500 NE Spanish River Blvd
Boca Raton, FL

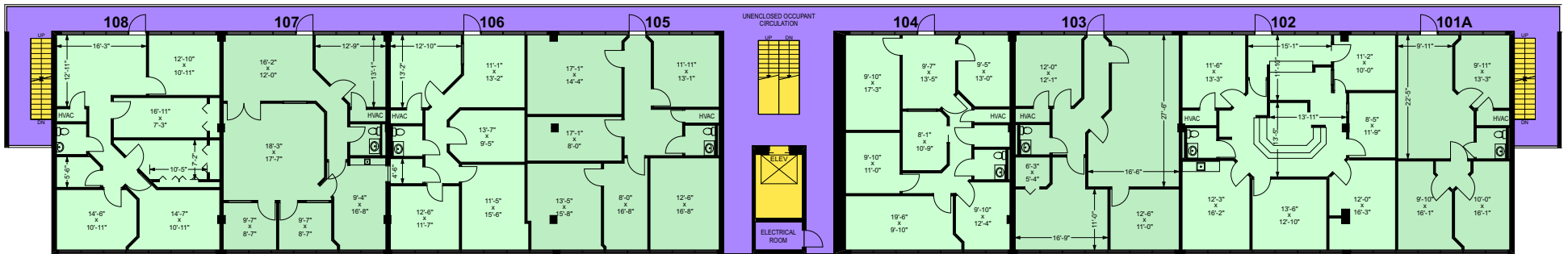
Ground

Plan Version: 1A
Measured: 01/26/22
Prepared: 02/04/22

phone: (305) 702-0590
www.floridameasures.com
mail@floridameasures.com
@floridameasures



This work product has been prepared by Florida Measures, LLC pursuant to a contract with the Client for the sole benefit of and use by the Client. No third party may rely on this work product without the receipt of a reliance letter from Florida Measures, LLC.



BOMA 2017 OFFICE BUILDINGS: STANDARD METHODS OF MEASUREMENT, METHOD A (ANSI/BOMA Z65.1-2017)

- Rentable Exclusions
- Building Service Area
- Building Amenity Area
- Floor Service Area
- Tenant Area & Tenant Ancillary Area



"Client"

**BRICKSTAR
CAPITAL**

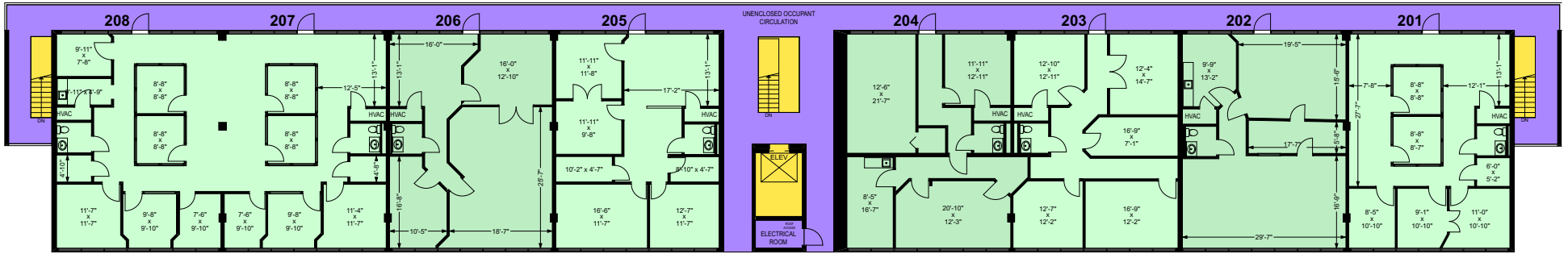
**Spanish River Plaza
500 NE Spanish River Blvd
Boca Raton, FL**

Floor 1
Plan Version: 1A
Measured: 01/26/22
Prepared: 02/04/22

phone: (305) 702-0590
www.floridameasures.com
mail@floridameasures.com
@floridameasures



This work product has been prepared by Florida Measures, LLC pursuant to a contract with the Client for the sole benefit of and use by the Client. No third party may rely on this work product without the receipt of a reliance letter from Florida Measures, LLC.



BOMA 2017 OFFICE BUILDINGS: STANDARD METHODS OF MEASUREMENT, METHOD A (ANSI/BOMA Z65.1-2017)

- Rentable Exclusions
- Building Service Area
- Building Amenity Area
- Floor Service Area
- Tenant Area & Tenant Ancillary Area



"Client"
**BRICKSTAR
CAPITAL**

**Spanish River Plaza
500 NE Spanish River Blvd
Boca Raton, FL**

Floor 2
Plan Version: 1A
Measured: 01/26/22
Prepared: 02/04/22

phone: (305) 702-0590
www.floridameasures.com
mail@floridameasures.com
@floridameasures

**FLORIDA
MEASURES**

This work product has been prepared by Florida Measures, LLC pursuant to a contract with the Client for the sole benefit of and use by the Client. No third party may rely on this work product without the receipt of a reliance letter from Florida Measures, LLC.